

Fresh 'n Rebel Clam ANC

Fresh 'n Rebel Clam ANC Bluetooth Headphones User Manual

Model: Clam ANC

INTRODUCTION

Thank you for choosing the Fresh 'n Rebel Clam ANC Bluetooth Headphones. These over-ear headphones are designed to provide a superior audio experience with active noise cancellation, long battery life, and comfortable wear. This manual will guide you through the setup, operation, and maintenance of your new headphones.



Image: Fresh 'n Rebel Clam ANC Bluetooth Headphones in Brave Bronze, showcasing the sleek design and over-ear cups.

WHAT'S IN THE BOX

Ensure all the following items are present in your package:

- Fresh 'n Rebel Clam ANC Wireless Over-Ear Headphones
- Charging Cable (USB to Micro-USB)

- Audio Cable (3.5 mm)
- Carrying Pouch
- Quick Start Guide (separate document)

WAS IST IN DER BOX?

Clam ANC Kabellose Over-Ear-Kopfhörer
Ladekabel (USB auf Micro-USB)
Audiokabel (3,5 mm)
Tragetasche
Kurzanleitung



Image: A visual representation of the Fresh 'n Rebel Clam ANC headphones, charging cable, audio cable, and carrying pouch, as typically found in the product packaging.

SETUP

1. Charging the Headphones

Before first use, fully charge your Clam ANC headphones.

1. Connect the Micro-USB end of the charging cable to the charging port on the headphones.
2. Connect the USB-A end of the charging cable to a USB power adapter (not included) or a computer's USB port.
3. The LED indicator on the headphones will show the charging status. It typically takes approximately 3 hours for a full charge.
4. Once fully charged, disconnect the charging cable.

WIEDERGABEZEIT
**DIE MUSIK HÖRT
NIEMALS AUF**

**35
STD**



IN NUR 3 STUNDEN
VOLLSTÄNDIG AUFGELODEN

**30^{STD}
ANC**



Image: A graphic illustrating the impressive battery life of the Clam ANC headphones, indicating up to 35 hours of wireless playtime without ANC and 30 hours with ANC enabled, with a full charge in 3 hours.

2. Bluetooth Pairing

Pair your headphones with your Bluetooth-enabled device (smartphone, tablet, computer).

1. Ensure the headphones are turned off.
2. Press and hold the power button on the headphones until the LED indicator flashes blue and red, indicating pairing

mode.

3. On your device, go to Bluetooth settings and enable Bluetooth.
4. Select "Clam ANC" from the list of available devices.
5. Once paired, the LED indicator on the headphones will turn solid blue or flash blue slowly.
6. If prompted, enter "0000" as the passcode.

Note: The headphones support Bluetooth 5.0 for fast and stable connections and are compatible with both iOS and Android devices.

KABELLOSES HÖRERLEBNIS LASSE LÄRM UND KABEL HINTER DIR



SCHNELLES PAIRING
BLUETOOTH 5.0



FUNKTIONIERT MIT
IOS UND ANDROID

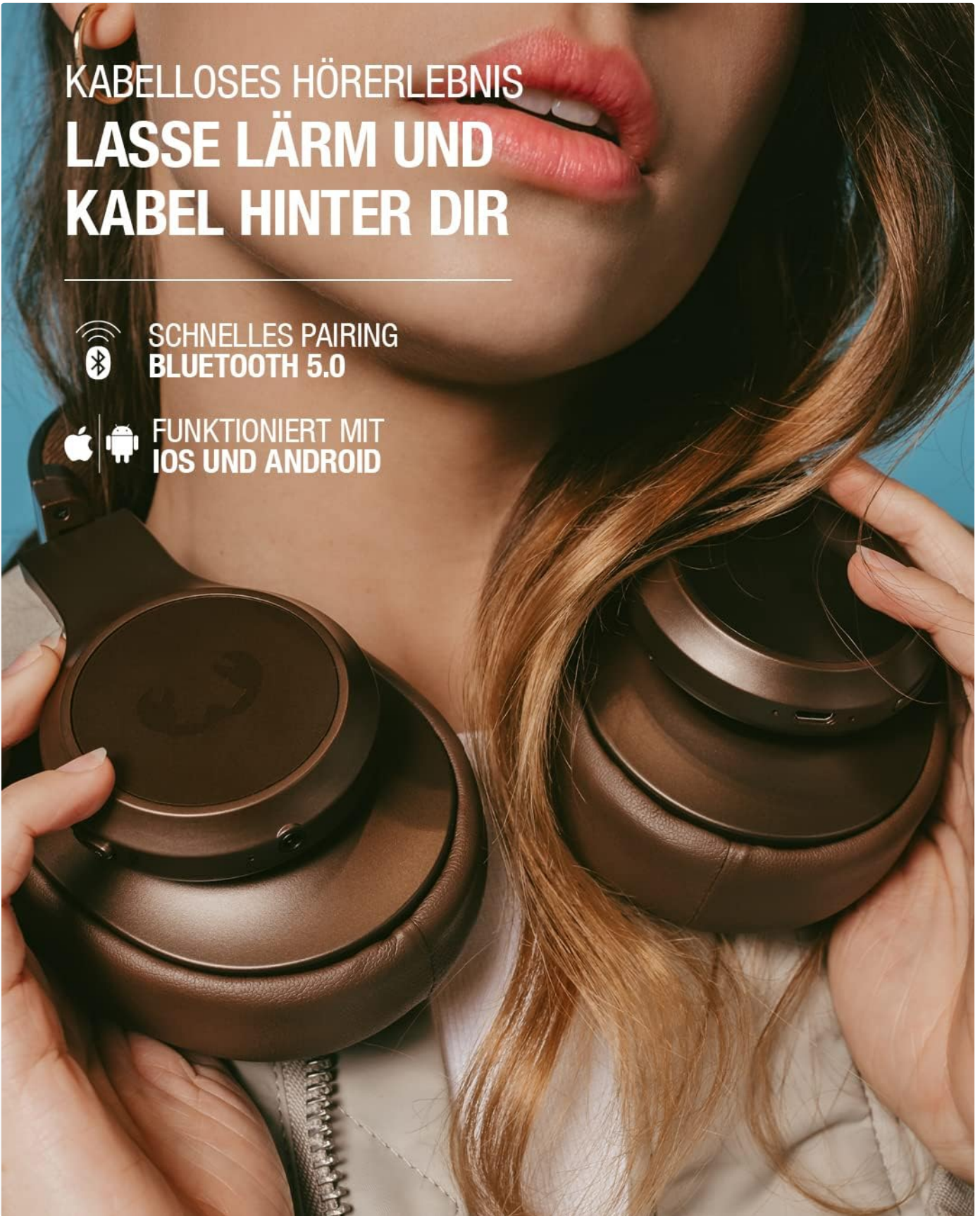


Image: A visual representation highlighting the wireless experience of the Clam ANC headphones, emphasizing quick Bluetooth 5.0 pairing and compatibility with iOS and Android devices.

OPERATING INSTRUCTIONS

1. Power On/Off

- **Power On:** Press and hold the power button for approximately 3 seconds until the LED indicator lights up.

- **Power Off:** Press and hold the power button for approximately 3 seconds until the LED indicator turns off.

2. Active Noise Cancellation (ANC)

The Clam ANC headphones feature active noise cancellation to reduce ambient sounds.

- **Activate ANC:** Press the dedicated ANC button. The ANC indicator light will illuminate.
- **Deactivate ANC:** Press the ANC button again. The ANC indicator light will turn off.



AKTIVES NOISE-CANCELLING
**SCHALTE DIE WELT
STUMM**

ANC
26 dB REDUZIERT
UMGEBUNGSGERÄUSCHE

Image: A graphic illustrating the Active Noise Cancellation (ANC) feature of the Clam ANC headphones, indicating a reduction of up to 26 dB in ambient noise, designed to create a quieter listening environment.

3. Music Playback Controls

- **Play/Pause:** Press the multi-function button once.
- **Next Track:** Press and hold the Volume Up button.
- **Previous Track:** Press and hold the Volume Down button.
- **Volume Up:** Press the Volume Up button briefly.
- **Volume Down:** Press the Volume Down button briefly.

QUALCOMM® APTX™
**HOCHWERTIGES AUDIO
MIT TIEFEN BÄSSE**



Qualcomm®
aptX™



**40MM
TREIBER**



Image: A graphic highlighting the high-quality audio experience of the Clam ANC headphones, featuring Qualcomm aptX technology for superior sound with deep bass, delivered through 40mm drivers.

4. Call Management

- **Answer/End Call:** Press the multi-function button once.
- **Reject Call:** Press and hold the multi-function button for 2 seconds.
- **Voice Assistant:** Double-press the multi-function button to activate your device's voice assistant (Siri, Google Assistant, etc.).

5. Wired Connection

You can use the included 3.5mm audio cable to connect your headphones to devices without Bluetooth or when the battery is depleted.

- Plug one end of the 3.5mm audio cable into the audio jack on the headphones.
- Plug the other end into the 3.5mm audio output of your device.
- In wired mode, Bluetooth and ANC functions may operate differently or be unavailable depending on battery level.

MAINTENANCE

1. Cleaning

- Wipe the headphones with a soft, dry, lint-free cloth.
- Do not use abrasive cleaners, alcohol, or chemical solvents.
- Keep the charging port and audio jack free of dust and debris.

2. Storage

- When not in use, store the headphones in the provided carrying pouch to protect them from dust and scratches.
- The headphones are foldable and rotatable for compact storage, making them ideal for travel.
- Avoid storing in extreme temperatures or high humidity.



Image: The Fresh 'n Rebel Clam ANC headphones shown in their folded position, demonstrating their compact design for easy storage and portability.

TROUBLESHOOTING

If you encounter issues with your headphones, refer to the following common solutions:

- **Headphones not turning on:** Ensure the headphones are fully charged.
- **Cannot pair with device:**
 - Make sure Bluetooth is enabled on your device.
 - Ensure the headphones are in pairing mode (flashing blue and red LED).
 - Move the headphones closer to your device.
 - Forget "Clam ANC" from your device's Bluetooth list and try pairing again.
- **No sound:**
 - Check the volume levels on both the headphones and your connected device.
 - Ensure the headphones are properly paired.
 - If using the audio cable, ensure it is fully plugged in on both ends.
- **ANC not working effectively:**

- Ensure the ANC feature is activated.
- ANC is most effective against low-frequency, constant noise.

- **Intermittent connection:**

- Reduce the distance between the headphones and your device.
- Avoid obstacles between the headphones and your device.
- Minimize interference from other wireless devices.

SPECIFICATIONS

Model Name	Clam ANC
Brand	Fresh 'n Rebel
Connectivity Technology	Wireless (Bluetooth 5.0)
Headphones Form Factor	Over Ear
Active Noise Cancellation (ANC)	Yes (up to 26 dB reduction)
Wireless Playtime	Up to 35 hours (without ANC), 30 hours (with ANC)
Charging Time	Approx. 3 hours
Headphones Jack	3.5 mm Jack
Built-in Microphone	Yes
Foldable Design	Yes
Material	Plastic
Battery Type	Lithium Ion
Package Dimensions	24.3 x 16.6 x 11.6 cm
Weight	240 g

WARRANTY AND SUPPORT

For warranty information and customer support, please refer to the official Fresh 'n Rebel website or contact their customer service directly. Keep your proof of purchase for warranty claims.

Online Support: Visit the Fresh 'n Rebel official website for FAQs, product registration, and contact details.

