



[Manuals.plus](#) /

- › [Amazon Basic Care](#) /
- › Amazon Basic Care Blood Pressure Monitor (Model 59-553) Instruction Manual

Amazon Basic Care 59-553

Amazon Basic Care Blood Pressure Monitor (Model 59-553)

Instruction Manual

INTRODUCTION

This manual provides essential information for the safe and effective use of your Amazon Basic Care Blood Pressure Monitor. Please read all instructions carefully before use and retain this manual for future reference. This device is designed for adult use only for measuring blood pressure and pulse rate.

SAFETY INFORMATION

- Prolonged over-inflation may cause congestion, swelling, or bruising in some individuals.
- Too-frequent measurements may cause injury due to blood flow interference.
- Check the circulation of the user before, during, and after use.
- If you experience any discomfort or an abnormality occurs, stop using the device immediately. To stop the device during operation, press the POWER button, and the cuff will automatically deflate.
- Operation outside of the stated operating temperature may result in measurement error or device malfunction. The operating environment temperature is: 50°F - 104°F (10°C - 40°C); Humidity: ≤85%RH max.
- Never use this unit while operating a vehicle or in the bathtub or shower.

WHAT'S IN THE BOX

Your Amazon Basic Care Blood Pressure Monitor package includes:

- Blood Pressure Monitor Unit
- Wide-range Nylon Arm Cuff (fits arm size: 8.6" – 16.5" / 22 – 42 cm)
- Storage Case
- Four AAA Batteries
- Detailed English/Spanish Guidebook
- Quick Start Guide
- FAQ Pamphlet



Image: Contents of the Amazon Basic Care Blood Pressure Monitor package, including the monitor, arm cuff, batteries, and storage case.

SETUP

1. **Install Batteries:** Open the battery compartment on the back of the monitor and insert the four AAA batteries provided, ensuring correct polarity.
2. **Connect Cuff:** Insert the cuff tubing connector firmly into the port located on the left side of the monitor unit.
3. **Set Date and Time (Optional):** Refer to the detailed guidebook for instructions on setting the date and time. This helps in tracking measurements accurately.

OPERATING INSTRUCTIONS

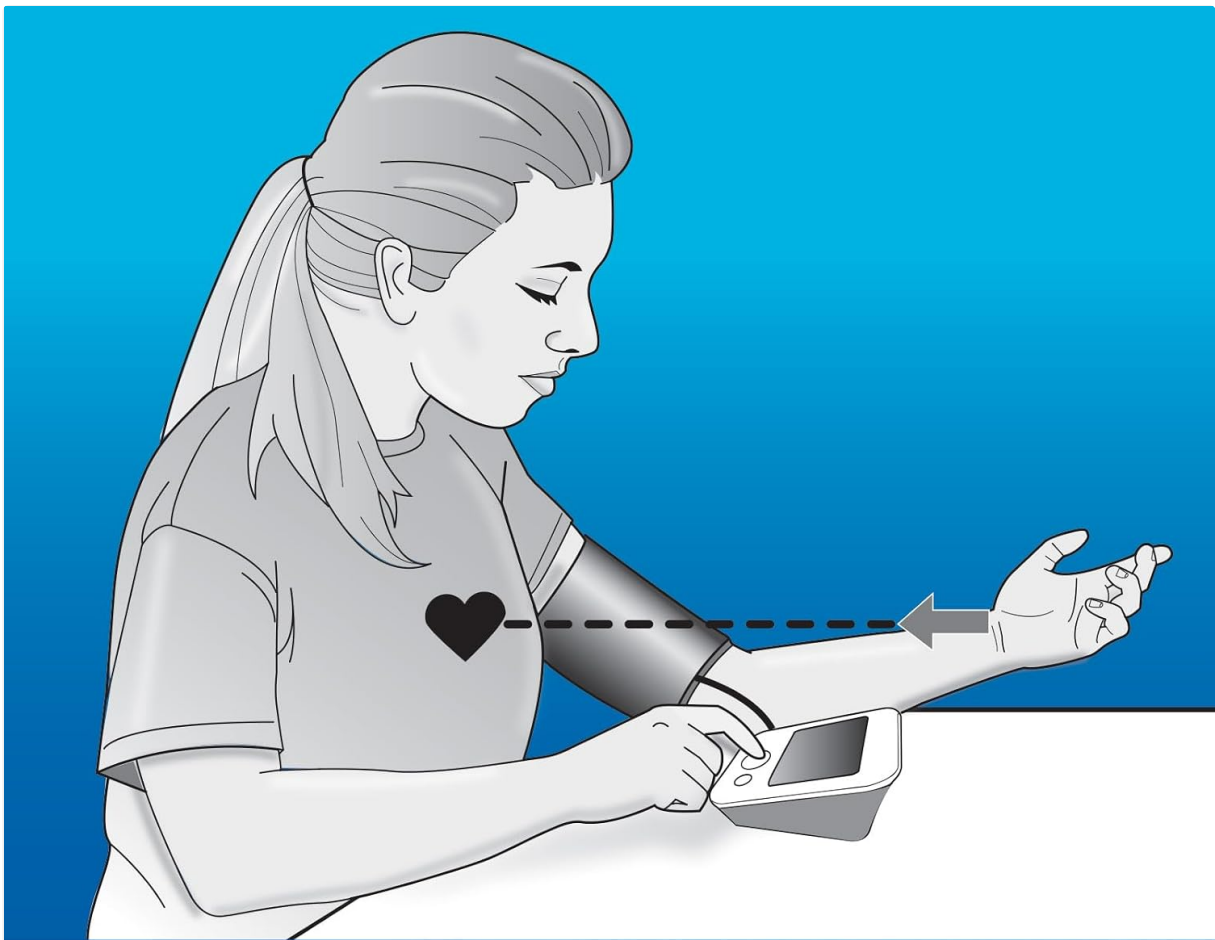
Follow these steps for an accurate blood pressure measurement:

1. **Prepare for Measurement:** Select the desired user (1 or 2) if using the 2-person memory feature. Position the monitor on a flat, stable surface with the digital display in view. Be seated with your feet flat on the floor and legs uncrossed.
2. **Apply Cuff:** After applying the cuff, ensure the cuff tubing connector is securely inserted into the port on the left side of your monitor.

3. **Arm Position:** Rest your elbow on a solid surface with your palm facing upward. Elevate your arm so that the cuff is at the same level as your heart. Relax your left hand.
4. **Start Measurement:** Press and release the POWER button to turn the unit on. The unit will briefly flash a self-test.
5. **Select User (if applicable):** The display will show the current memory bank in use (1 or 2). Press the 'M' button to select a different memory bank if desired. If no selection is made, the unit will default to the memory bank displayed.
6. **Inflation Process:** The display will briefly show a flashing '0' before the measurement begins. As the inflation process starts, the display may briefly show a downward arrow, indicating the cuff is releasing any air remaining in the cuff prior to measurement inflation. The cuff will automatically inflate; you will see the numbers increase on the display screen and feel the cuff inflate.
7. **View Results:** When the measurement is complete, the cuff will automatically deflate. Your blood pressure measurement (Systolic and Diastolic) and pulse reading results will show on the display screen at the same time.
8. **Interpret Results:** The Hypertension Indicator will show your reading range on the left display in comparison to the color bars on the face of the monitor. If an irregular heartbeat was detected during the reading, the Irregular Heartbeat Detection indicator will appear on the display.
9. **Save and Power Off:** The reading will automatically be stored in memory, up to 60 readings per user bank. Press the POWER button to turn the unit off and conserve energy and battery life. The unit will automatically shut off approximately 1 minute after use. Disconnect the tubing prior to storage.



Image: Key features and display elements of the blood pressure monitor.



INTELLIGENT INFLATION

Faster, more comfortable measurements

Image: Demonstrating the Intelligent Inflation technology for faster, more comfortable measurements.

FEATURES

- **Fully Automatic Operation:** One-button start for inflation and deflation.
- **2-Person Memory:** Stores up to 120 measurements per user (60 per user) with date/time stamps for easy tracking.
- **Wide-Range Arm Cuff:** Suitable for most adults, fitting arm sizes from 8.6" to 16.5" (22 – 42 cm).
- **Intelligent Inflation Technology:** Utilizes results history to determine inflation level, providing faster and more comfortable readings.
- **Hypertension Indicator:** Visual cues assess if readings fall within World Health Organization standards.
- **Irregular Heartbeat Detector:** Alerts if an irregular heartbeat is detected during measurement.

2-Person Memory

120 Readings - 60 Per User



Image: The monitor features 2-person memory, storing 60 readings per user.

MAINTENANCE

- **Cleaning:** Wipe the monitor and cuff with a soft, dry cloth. Do not use abrasive cleaners or immerse the unit in water.
- **Storage:** Store the device in its provided storage case in a cool, dry place, away from direct sunlight and extreme temperatures.
- **Battery Replacement:** Replace all four AAA batteries when the low battery indicator appears on the display. Do not mix old and new batteries.

TROUBLESHOOTING

If you encounter issues with your blood pressure monitor, refer to the detailed guidebook for specific troubleshooting steps. Common issues may include:

- **Inaccurate Readings:** Ensure correct cuff placement, proper arm position, and that you are relaxed during measurement.
- **Cuff Not Inflating:** Check that the cuff tubing is securely connected to the monitor and that batteries are properly installed and charged.
- **Error Messages:** Consult the guidebook for explanations of specific error codes displayed on the screen.

SPECIFICATIONS

Model Number	59-553
Product Dimensions	4.94 x 3.94 x 7.47 inches (Monitor: 6"L x 4"W x 3"Th)
Item Weight	6.1 ounces (6.08 ounces)
Power Source	4 AAA batteries (included)
Cuff Size	Wide-range, fits arm size: 8.6" – 16.5" (22 – 42 cm)
Display Type	LED
Age Range	Adult

WARRANTY AND SUPPORT

Your Amazon Basic Care Blood Pressure Monitor comes with a **3-year limited warranty**. For customer support, please refer to the contact information provided in your detailed guidebook or quick start guide. Always read instructions, warnings, and use directions prior to use.