

## Monroe 173051

# Monroe Quick-Strut 173051 Suspension Strut and Coil Spring Assembly User Manual

For Chevrolet Malibu (2016-2023)

## 1. INTRODUCTION

The Monroe Quick-Strut 173051 is a complete, vehicle-specific strut and coil spring assembly engineered to restore factory ride height and performance. This unit includes all necessary components for a comprehensive strut replacement, eliminating the need for a spring compressor during installation.

This assembly is compatible with **2016-2023 Chevrolet Malibu** models.





Image 1.1: The Monroe Quick-Strut 173051 Suspension Strut and Coil Spring Assembly.

## 2. PRODUCT FEATURES

The Monroe Quick-Strut assembly offers several key features designed to enhance vehicle performance and simplify installation:

- **Complete Repair Solution:** Includes all components for strut replacement in a single, fully assembled unit, removing the need for a spring compressor.
- **Restores Ride Height:** Each application-specific coil spring is precisely calibrated to meet original equipment (OE) design, restoring proper ride height and supporting the vehicle's weight.
- **Vehicle-Specific Design:** Coil spring, mount, and strut designs are tailored to each vehicle profile for optimized ride and handling.
- **OE Quality Components:** Features a preassembled upper strut mount, coil spring, and strut with an OE-style design for seamless fit, form, and function.

- **Durable Construction:** Manufactured with high-quality steel, featuring a superior tube and weld design for structural integrity and durability.
- **Improved Vehicle Control:** Designed to reduce body sway, vibration, and road harshness, contributing to better vehicle handling.
- **Enhanced Steering:** A premium upper strut mount ensures smooth, precise steering and minimizes noise, vibration, harshness, and memory steer.
- **Rust Protection:** A protective coating is applied to reduce rust, with salt spray testing confirming readiness for various environmental conditions.

# PREMIUM **MONROE**<sup>®</sup> **QUICK-STRUT**<sup>®</sup> RESTORES OE PERFORMANCE

Optimized vehicle-specific design restores ride and handling experience unique to each vehicle profile



Image 2.1: Illustration highlighting how Monroe Quick-Strut restores original equipment performance.

# IMPROVES **STEERING**

Premium upper strut mount helps ensure smooth, “like-new” steering precision and reduces noise, vibration, harshness and memory steer



Image 2.2: Close-up of the upper strut mount, indicating improved steering precision.

### 3. COMPONENTS OVERVIEW

The Quick-Strut assembly is a fully integrated unit, combining multiple suspension components into one pre-assembled part. This design simplifies installation and ensures all components work together optimally.



Image 3.1: An exploded view illustrating the various components integrated into the Quick-Strut assembly, including the robust bearing plate, jounce bumper, dust boot, upper and lower spring isolators, OE-style coil spring, and OE-quality strut technology.

#### 4. VEHICLE COMPATIBILITY

This Monroe Quick-Strut assembly (Part Number 173051) is specifically designed for:

- **Chevrolet Malibu:** Model years 2016, 2017, 2018, 2019, 2020, 2021, 2022, 2023.

It is crucial to verify compatibility with your specific vehicle's year, make, model, engine, and trim before purchase and installation. Consult your vehicle's service manual or a qualified mechanic for precise fitment information.

#### 5. INSTALLATION GUIDELINES

The Monroe Quick-Strut assembly is designed for a quicker, safer, and easier repair process as it comes fully



assembled, eliminating the need for a spring compressor. However, suspension work requires specialized tools and knowledge. **Professional installation by a certified mechanic is highly recommended.**

### General Installation Steps (Consult Service Manual for Details):

1. Safely lift and support the vehicle.
2. Remove the wheel.
3. Disconnect brake lines, ABS sensors, and sway bar links from the existing strut assembly.
4. Unbolt the lower strut mounting bolts from the steering knuckle.
5. Remove the upper strut mounting nuts from the vehicle's chassis.
6. Carefully remove the old strut assembly.
7. Install the new Monroe Quick-Strut assembly, ensuring proper alignment of the upper mount and lower mounting points.
8. Tighten all bolts and nuts to the manufacturer's specified torque values.
9. Reconnect all disconnected components (brake lines, ABS sensors, sway bar links).
10. Reinstall the wheel and lower the vehicle.
11. Perform a wheel alignment after installation to ensure proper vehicle handling and tire wear.

# MADE TO LAST

Manufactured with high-quality steel,  
featuring a superior tube and weld design  
to deliver structural integrity and durability



Image 5.1: A technician installing a Quick-Strut assembly into a vehicle's wheel well.



Image 5.2: A vehicle raised on a professional lift, indicating the need for proper equipment during suspension work.

## 6. OPERATING CHARACTERISTICS

Once installed, the Monroe Quick-Strut assembly contributes to the overall operating characteristics of your Chevrolet Malibu by:

- **Restoring Ride Comfort:** By absorbing road impacts, the strut assembly helps maintain a smooth and comfortable ride.
- **Improving Handling:** The vehicle-specific design and OE-style components ensure predictable and responsive handling, especially during turns and maneuvers.
- **Enhancing Stability:** Reducing body sway and maintaining consistent tire contact with the road surface improves overall vehicle stability.
- **Optimizing Braking Performance:** A properly functioning suspension system helps maintain tire grip during braking, contributing to shorter stopping distances.



Image 6.1: A vehicle on a road, symbolizing the restored ride, handling, and control provided by the Quick-Strut assembly.

## 7. MAINTENANCE

Suspension components are subject to wear over time. Regular inspection is key to maintaining optimal vehicle performance and safety.

### Recommended Maintenance Practices:

- **Periodic Visual Inspection:** During routine vehicle service (e.g., oil changes, tire rotations), visually inspect the struts for signs of fluid leaks, bent components, or damaged boots.
- **Check for Rust:** While the Quick-Strut features rust protection, inspect for any signs of corrosion, especially in areas exposed to road salt or harsh weather.
- **Listen for Noises:** Pay attention to any unusual clunking, rattling, or squeaking noises coming from the suspension, which could indicate wear.
- **Professional Inspection:** Have your suspension system professionally inspected at least once a year or every 12,000 miles (20,000 km).

## 8. TROUBLESHOOTING COMMON ISSUES

If you experience any of the following symptoms, your suspension components, including the struts, may require inspection or replacement:

- **Excessive Bouncing or Sway:** The vehicle continues to bounce after hitting a bump, or exhibits excessive body roll during turns.
- **Nose Dive or Squat:** The front of the vehicle dips excessively during braking, or the rear squats during acceleration.
- **Uneven Tire Wear:** Scalloped or cupped tire wear patterns can indicate worn suspension components.
- **Fluid Leaks:** Visible oil or fluid leaking from the strut body.
- **Unusual Noises:** Clunking, rattling, or squeaking sounds over bumps.
- **Reduced Steering Response:** A noticeable decrease in steering precision or a feeling of looseness in the steering.

If you observe any of these signs, it is recommended to have your vehicle inspected by a qualified technician.

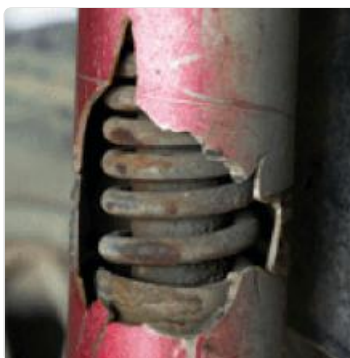


Image 8.1: An example of a severely rusted and damaged coil spring, indicating the need for immediate replacement.

## 9. TECHNICAL SPECIFICATIONS



Specification	Detail
Brand	Monroe
Model Number	173051
Auto Part Position	Upper
Vehicle Service Type	Car
Material	Alloy Steel
Item Weight	20.3 pounds
Product Dimensions	24.4 x 8.8 x 9.8 inches
UPC	048598241283
Manufacturer	DRiV Incorporated

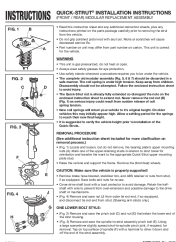
## 10. WARRANTY AND SUPPORT



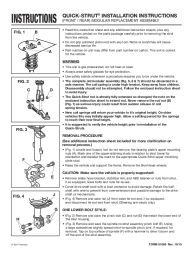


For specific warranty information regarding your Monroe Quick-Strut 173051 assembly, please refer to the documentation included with your product or visit the official Monroe website. Warranty terms typically cover manufacturing defects and material flaws for a specified period or mileage.

For technical support, installation assistance, or to report any issues, please contact Monroe customer service directly. Contact information can usually be found on the product packaging or the manufacturer's website.

In case of returns or exchanges, please adhere to the retailer's return policy where the product was purchased. For items purchased through Amazon, the standard return policy applies, which typically allows for returns within 30 days of receipt for a refund or replacement.

### Related Documents - 173051

	<p><a href="#">Monroe Quick-Strut Installation Instructions</a></p> <p>Comprehensive installation guide for Monroe Quick-Strut modular replacement assemblies, covering removal and installation procedures for various vehicle strut configurations.</p>
---	---

	<p><a href="#">Monroe Shock Absorber and Strut Catalogue 2024-2025</a></p> <p>Comprehensive 2024-2025 Monroe catalogue featuring shock absorbers, struts, and mounting/protection kits for a wide range of passenger and commercial vehicles. Find part numbers and application details.</p>
	<p><a href="#">Monroe 2019 Master Catalogue - Shock Absorbers &amp; Suspension Parts</a></p> <p>Explore the comprehensive Monroe 2019 Master Catalogue featuring a wide range of shock absorbers and suspension components for numerous vehicle makes and models. Find part numbers and technical information.</p>
	<p><a href="#">Monroe Quick-Strut Installation Instructions</a></p> <p>Comprehensive installation guide for Monroe Quick-Strut modular replacement assemblies, covering removal and installation procedures for various vehicle strut configurations.</p>
	<p><a href="#">Volvo 7xx/9xx Front Suspension Maintenance Guide: Alignment, Bushings, Struts, and More</a></p> <p>Comprehensive guide to Volvo 7xx, 9xx, 740, 744T, 745T, 940, and 960 front suspension maintenance, covering wheel alignment, bushing replacement, strut installation, tie rod and ball joint service, troubleshooting, and more.</p>
	<p><a href="#">Monroe Shock Absorber and Strut Catalogue 2024-2025</a></p> <p>Comprehensive 2024-2025 Monroe catalogue featuring shock absorbers, struts, and mounting/protection kits for a wide range of passenger and commercial vehicles. Find part numbers and application details.</p>