

[Manuals.plus](#) /

› [STIGA](#) /

› STIGA 136e Collector Kit Battery Lawn Mower User Manual

STIGA 136e Collector Kit

STIGA 136e Collector Kit Battery Lawn Mower User Manual

Model: 136e Collector Kit | Brand: STIGA

1. INTRODUCTION

This manual provides essential information for the safe and efficient operation, maintenance, and troubleshooting of your STIGA 136e Collector Kit Battery Lawn Mower. Please read this manual thoroughly before using the product and keep it for future reference. Proper use and maintenance will ensure optimal performance and extend the lifespan of your lawn mower.

Safety Information

Always wear appropriate personal protective equipment (PPE) such as safety glasses, sturdy footwear, and hearing protection when operating the lawn mower. Ensure the work area is clear of debris, children, and pets. Disconnect the battery before performing any maintenance or cleaning tasks.

2. PRODUCT OVERVIEW

The STIGA 136e Collector Kit is a cordless battery-powered lawn mower designed for small to medium residential gardens. It features a robust cutting deck, adjustable cutting heights, and an efficient grass collection system.

Key Features:

- **Efficient Cutting:** 34 cm cutting width with 6 adjustable cutting heights (25 mm to 75 mm) for optimal lawn care.
- **Cordless Operation:** Powered by two ePower20V (2Ah) lithium-ion batteries for quiet, emission-free mowing.
- **Hybrid Grass Collector:** 35 L capacity for efficient grass collection and compact storage.
- **Ergonomic Design:** Lightweight and compact with a two-position adjustable handlebar and comfortable transport handle.
- **Durable Construction:** Steel cutting deck for precise and long-lasting performance.

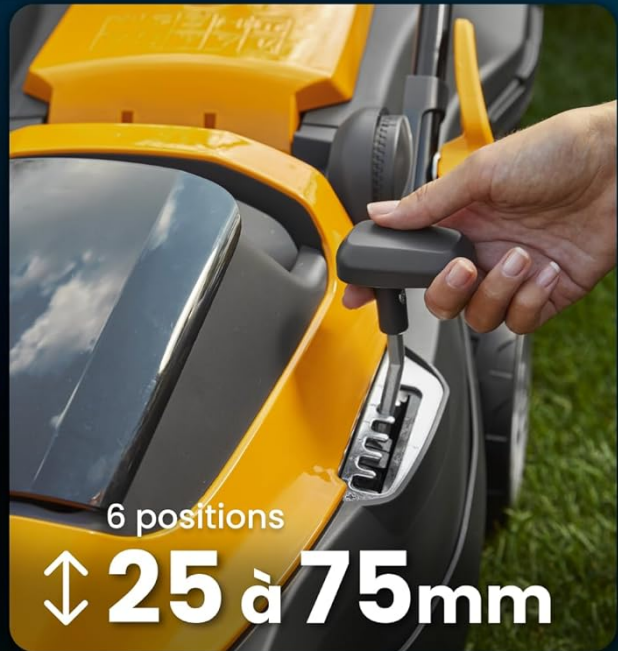
Excellents résultats de coupe
pour une pelouse plus saine et plus belle

35_L

Collecteur d'herbe hybride



↔ **34 cm**
largeur coupés



6 positions
↕ **25 à 75 mm**

Figure 2.1: Overview of the STIGA 136e Collector Kit features, including grass collector volume, cutting width, and height adjustment range.

Confort ergonomique

- **Confort lors de la coupe**
- **Levier de réglage de la hauteur de coupe**
- **Facile à transporter**



Figure 2.2: Ergonomic features of the lawn mower, highlighting comfort during operation and ease of transport.

3. SETUP

3.1 Assembly

Your STIGA 136e Collector Kit may require minor assembly before first use. Follow the instructions provided in the separate assembly guide for attaching the handlebar and grass collector. Ensure all components are securely fastened.

3.2 Battery Charging and Installation

The kit includes two ePower20V (2Ah) lithium-ion batteries and a double charger. Fully charge both batteries before initial use.

1. Connect the charger to a suitable power outlet.
2. Insert the batteries into the charger slots. The indicator lights on the charger will show the charging status.
3. Once fully charged, remove the batteries from the charger.
4. Open the battery compartment cover on the lawn mower.
5. Insert both charged batteries into their respective slots until they click into place.

6. Close the battery compartment cover securely.

Batteries partageables
Intelligentes, sûres et résistantes

Inclus

2 x STIGA ePower20V E 22 (2Ah) batteries

Double chargeur



Figure 3.1: The included 2x STIGA ePower20V (2Ah) batteries and double charger.



4. OPERATING INSTRUCTIONS

4.1 Adjusting Cutting Height

The cutting height can be adjusted to 6 positions, ranging from 25 mm to 75 mm, to suit different lawn conditions.

1. Ensure the mower is turned off and the batteries are removed for safety.
2. Locate the cutting height adjustment lever, typically near one of the rear wheels.
3. Pull the lever outwards and move it to the desired height setting.
4. Ensure the lever locks firmly into place.



Figure 4.1: Adjusting the cutting height using the lever.

4.2 Starting and Mowing

Before starting, ensure the grass collector is properly attached and the cutting height is set.

1. Ensure batteries are installed and the safety key (if applicable) is inserted.
2. Press and hold the safety button on the handlebar.
3. While holding the safety button, pull the bail lever towards the handlebar. The motor will start.
4. Release the safety button but keep the bail lever held to continue operation.
5. Push the mower forward in overlapping rows to ensure an even cut. Avoid overloading the motor by cutting excessively long or wet grass.
6. To stop the mower, release the bail lever.



Figure 4.2: Operating the STIGA lawn mower for grass collection.

4.3 Emptying the Grass Collector

The 35 L hybrid grass collector has an indicator to show when it is full.

1. Stop the mower and remove the safety key and batteries.
2. Lift the rear flap of the mower.
3. Grasp the handle of the grass collector and lift it off the mower.
4. Empty the grass clippings into a suitable waste receptacle.
5. Reattach the grass collector by aligning it with the mower's hooks and lowering the rear flap.



Figure 4.3: Removing the grass collector for emptying.

5. MAINTENANCE

Regular maintenance ensures the longevity and safe operation of your lawn mower. Always disconnect the batteries before performing any maintenance.

5.1 Cleaning

- After each use, clean the cutting deck and the underside of the mower to prevent grass buildup. Use a brush or a damp cloth.
- Clean the grass collector regularly to maintain airflow and collection efficiency.
- Do not use high-pressure washers or immerse the mower in water.

5.2 Blade Care

Inspect the blade regularly for sharpness and damage. A dull or damaged blade can lead to poor cutting performance and strain the motor. If necessary, have the blade sharpened or replaced by a qualified service technician.

5.3 Storage

For long-term storage, ensure the mower is clean and dry. Remove the batteries and store them in a cool, dry place. The handlebar can be folded for compact storage.



Figure 5.1: The lawn mower in its folded position for compact storage.

6. TROUBLESHOOTING

This section addresses common issues you might encounter with your STIGA 136e Collector Kit lawn mower.

Problem	Possible Cause	Solution
Mower does not start	Batteries not charged or incorrectly inserted; Safety key not inserted; Safety button/bail lever not engaged.	Ensure batteries are fully charged and correctly inserted. Insert safety key. Engage safety button and bail lever simultaneously.
Poor cutting performance	Dull or damaged blade; Cutting height too low for grass condition; Grass collector full; Wet grass.	Inspect and sharpen/replace blade. Adjust cutting height. Empty grass collector. Mow when grass is dry.
Motor stops during operation	Overload due to thick/wet grass; Battery low; Obstruction in cutting deck.	Raise cutting height or mow smaller sections. Recharge batteries. Clear any obstructions (after removing batteries).
Excessive vibration	Damaged or unbalanced blade; Loose components.	Inspect blade for damage and replace if necessary. Check all fasteners for tightness. If vibration persists, contact service.

7. SPECIFICATIONS

Technical data for the STIGA 136e Collector Kit Battery Lawn Mower.

- **Brand:** STIGA
- **Model Number:** 291342068/ST2
- **Power Source:** Battery Powered (2 x ePower20V, 2Ah Lithium-ion)
- **Material:** Acrylonitrile Butadiene Styrene (ABS)
- **Color:** Yellow
- **Item Weight:** 11.3 Kilograms
- **Cutting Width:** 34 Centimeters
- **Operating Mode:** Manual Push
- **Product Dimensions (D x W x H):** 127P x 45I x 117H centimeters
- **Maximum Adjustable Cutting Height:** 7.5 Centimeters
- **Minimum Adjustable Cutting Height:** 25 Millimeters
- **Number of Cutting Positions:** 6
- **Average Battery Life:** 45 minutes (may vary based on conditions)
- **Grass Collector Capacity:** 35 Liters
- **Country of Origin:** Slovakia

8. WARRANTY AND SUPPORT

For warranty information, please refer to the warranty card included with your product or visit the official STIGA website. For technical support, spare parts, or service, please contact your local STIGA dealer or authorized service center. Keep your purchase receipt as proof of purchase for warranty claims.

