

LG 65UQ9000PUD

LG 65-Inch Class UQ9000 Series 4K Smart TV User Manual

Model: 65UQ9000PUD

1. INTRODUCTION

This manual provides essential information for the safe and efficient operation of your LG 65-Inch Class UQ9000 Series 4K Smart TV (Model: 65UQ9000PUD). This television features a 4K UHD display, powered by webOS 22 and ThinQ AI, offering a 60Hz refresh rate, HDR capabilities, and integrated smart features for an enhanced viewing experience. Please read this manual thoroughly before using your TV and retain it for future reference.

2. WHAT'S IN THE BOX

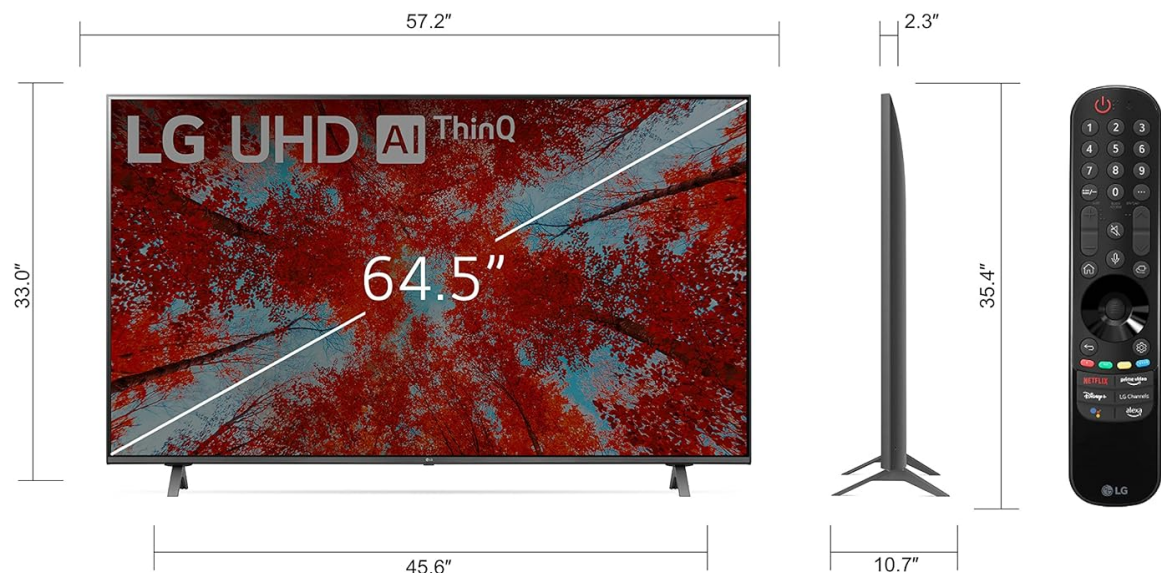
Verify that all components listed below are included in your product packaging:

- LG 65-Inch Class UQ9000 Series 4K Smart TV
- Magic Remote
- Power Cable
- Stand (2 pieces)
- Remote Control Batteries
- Quick Start Guide

LG UHD TV

65UQ9000PUD

65" Class
(64.5" Diag)



Dimensions (Inches W x H x D)

57.2 x 33.0 x 2.3 (without stand)

57.2 x 35.4 x 10.7 (with stand)

45.6 x 10.7 (stand footprint)

What's in the box

- Magic Remote
- Stand
- Remote Control Batteries
- Quick Start Guide
- Power Cable

Image: The LG 65UQ9000PUD TV displayed with its stand, Magic Remote, and power cable, illustrating the contents of the box.

3. SETUP

3.1. Unpacking and Placement

Carefully remove the TV from its packaging. It is recommended that two or more people handle the TV due to its size and weight. Place the TV on a stable, level surface or mount it securely to a wall.

3.2. Stand Assembly

If using the included stand, attach the two stand pieces to the bottom of the TV using the provided screws. Ensure the stand is securely fastened before placing the TV upright.

3.3. Wall Mounting

For wall mounting, use a VESA-compliant wall mount kit (sold separately). Refer to the wall mount kit's instructions for proper installation. The TV's dimensions are approximately 57.2 x 10.7 x 35.4 inches (W x D x H) with the stand, and it weighs approximately 47.4 pounds.

3.4. Connecting Peripherals

Connect your external devices (e.g., cable box, Blu-ray player, gaming console) to the TV's input ports. This TV features multiple HDMI ports, USB ports, and an Ethernet port for network connectivity.





Image: Rear view of the LG 65UQ9000PUD TV, highlighting the arrangement of its input and output ports.





Image: Side-facing view of the LG 65UQ9000PUD TV's connectivity panel, detailing HDMI, USB, and other accessible ports.



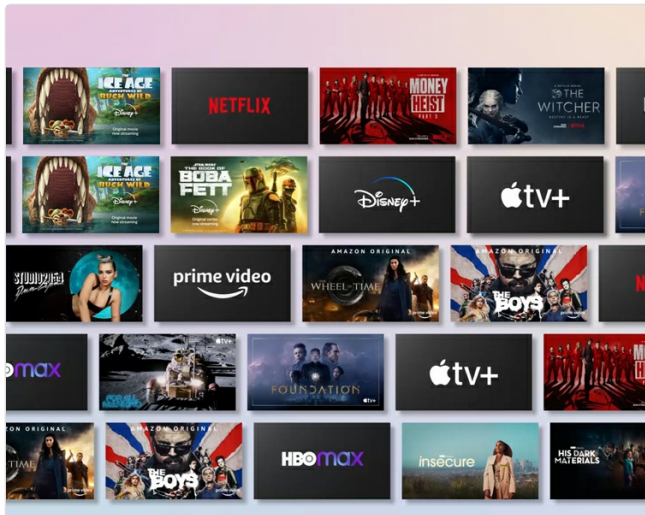
Image: A close-up of the LG 65UQ9000PUD TV's HDMI, USB, and LAN ports, showing their labels and arrangement.

4. KEY FEATURES

4.1. AI-Powered 4K Processing

The 5 Gen 5 AI Processor 4K enhances picture and sound quality. It intelligently analyzes and optimizes

content for a superior viewing experience.



Ultimate Streaming Binge-Worthy Streaming Starts Here

Find your faves fast with built-in access to Netflix, Prime Video, the Apple TV app, Disney+, HBO Max* and instant access to over 300+ free LG Channels** with everything from comedy to movies to sports.

*Internet connection and subscriptions to streaming services are required. Amazon, Prime Video and all related logos are trademarks of Amazon.com, Inc. or its affiliates. Amazon Prime membership and/or Prime Video fees apply. See primevideo.com/terms for details. HBO Max™ ©2022 Warner Media, LLC. All Rights Reserved. HBO Max is used under license.

**Number of LG Channels subject to change.

Image: Visual representation of the LG a5 Gen 5 AI Processor 4K, highlighting its role in enhancing picture and sound.

4.2. 4K Upscaling

The TV can transform regular content into 4K resolution, providing sharper definition and detail, even on larger screens. Image quality of upscaled content may vary based on the source resolution.

Sports Alert Real Time & Really Impressive

Never miss a moment with real-time updates from your favorite teams and most important matches.

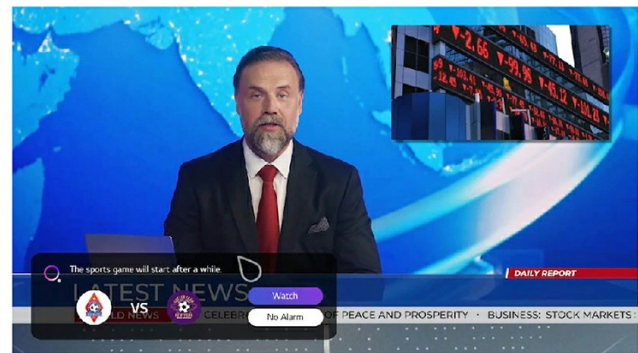


Image: A visual comparison showing how original content is transformed into sharper 4K upscaled content.

4.3. webOS 22 Operating System

Navigate through a user-friendly interface with webOS 22, offering quick access to streaming services and personalized content recommendations.



Image: The LG webOS 22 home screen, displaying a selection of popular streaming application icons.

Video: An overview of the LG UHD webOS interface, demonstrating its navigation and features.

4.4. Magic Remote

The included Magic Remote allows for intuitive control with point, click, scroll, and voice command functionalities. It also supports quick access buttons for popular streaming services.



Image: The LG Magic Remote, showcasing its design and dedicated buttons for voice control and streaming services.



FILMMAKER MODE™

Just the Way They Intended

See their vision just how they envisioned it with FILMMAKER MODE* that automatically preserves the director's original colors, settings and frame rates for a true at-home cinematic experience.

* FILMMAKER MODE™ logo is a trademark of the UHD Alliance, Inc.

Image: A visual explanation of the Magic Remote's intuitive control methods, including pointing, clicking, scrolling, and voice commands.

4.5. AI Sound Pro

The a5 Gen 5 AI Processor up-mixes 2-channel audio into virtual 5.1.2 channel sound, creating an immersive audio experience without additional speakers.

Active HDR (HDR10 Pro)

Elevate Your Scene

Enjoy scene-by-scene picture adjustment to automatically adjust the quality of what you're watching



Image: A diagram illustrating how AI Sound Pro creates a virtual 5.1.2 channel surround sound experience from 2-channel audio.

4.6. AI Brightness Control

The TV automatically adjusts screen brightness based on the ambient light in your room, ensuring optimal viewing conditions day or night.

Cloud Gaming

The New League of Gaming

With the seamless addition of GeForce Now,* there's a whole cloud of games waiting for you to play. Rediscover games you love and find new favorites straight from your television.

*Subscription and compatible gaming controller is required.



Image: A split image demonstrating the effect of AI Brightness Control, adapting the screen's luminosity for both bright and dark room environments.

4.7. Gaming Features

The Game Optimizer allows quick adjustment of game settings. The TV supports Cloud Gaming with GeForce Now and HGIG for enhanced HDR gaming realism.

Game Optimizer & Dashboard Up Your Game

Make it the best gaming experience by quickly adjusting all your game settings in one location.

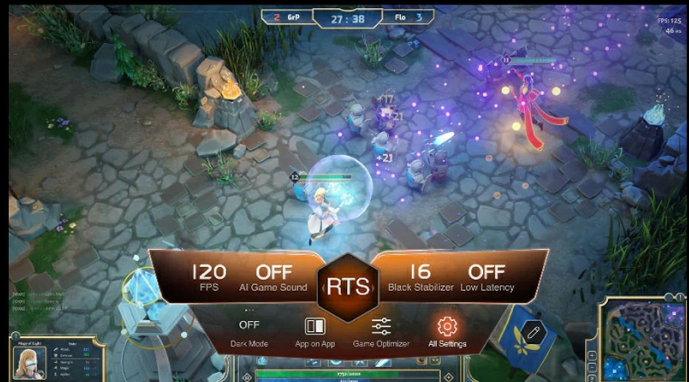


Image: The Game Optimizer dashboard on the LG TV, providing a centralized interface for adjusting various game settings.

Without HGIG

With HGIG



HGiG

For the Love of Gaming

LG partnered with some of the biggest names in the gaming industry to bring you the latest HDR games with utmost realism and immersion

Image: A visual demonstrating the HGIG feature, which enhances HDR gaming for greater realism and immersion.

4.8. Ultimate Streaming

Access a wide array of streaming services including Netflix, Prime Video, Apple TV app, Disney+, HBO Max, and over 300 free LG Channels. Internet connection and subscriptions may be required.



Image: A comprehensive display of various streaming service logos, indicating the wide range of content available on the LG TV.

4.9. Sports Alert

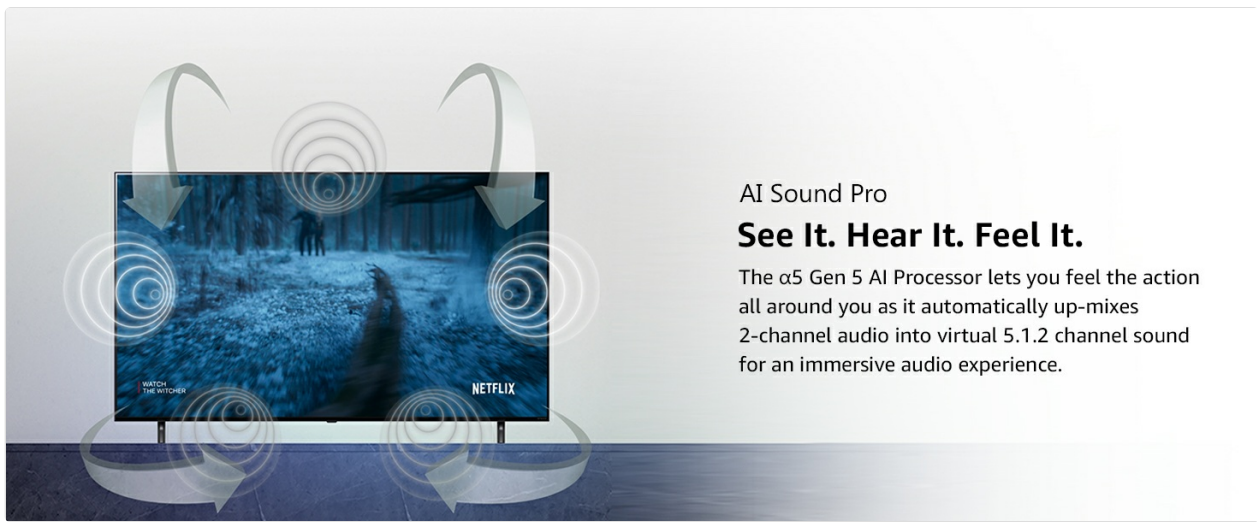
Receive real-time updates for your favorite teams and important matches, ensuring you never miss a moment.



Image: The Sports Alert feature shown on the LG TV, providing real-time updates for sports events.

4.10. Filmmaker Mode

Experience movies and shows as the director intended with Filmmaker Mode, which preserves original colors, settings, and frame rates for an authentic cinematic experience.



AI Sound Pro

See It. Hear It. Feel It.

The $\alpha 5$ Gen 5 AI Processor lets you feel the action all around you as it automatically up-mixes 2-channel audio into virtual 5.1.2 channel sound for an immersive audio experience.

Image: The Filmmaker Mode logo displayed alongside a movie scene, indicating its function to preserve original cinematic intent.

4.11. Active HDR (HDR10 Pro)

Enjoy scene-by-scene picture adjustment to automatically optimize the quality of what you're watching, enhancing contrast and color.

Magic Remote

It's Called Magic for a Reason

Quickly point, click, scroll or use voice control to find your favorite content faster with the LG Magic Remote.

"Find me landscapes"

Hey Google

alexabuilt-in

Works with Apple AirPlay

Works with Apple HomeKit

Image: A side-by-side comparison demonstrating the enhanced visual quality provided by Active HDR (HDR10 Pro) versus SDR.

Video: A brief demonstration of LG UHD features, including picture quality enhancements.

5. OPERATING INSTRUCTIONS

5.1. Power On/Off

Press the **Power** button on the Magic Remote or on the TV itself to turn the TV on or off.

5.2. Input Selection

Press the **Input** button on the Magic Remote to cycle through available input sources (HDMI 1, HDMI 2, USB, etc.).

5.3. Navigation

Use the directional pad or the pointer function of the Magic Remote to navigate the webOS interface. The

scroll wheel can be used for quick scrolling through menus and content lists.

5.4. Voice Control

Press the **Voice** button on the Magic Remote and speak your command to use built-in Alexa or Google Assistant for searching content, controlling smart home devices, and more.

6. MAINTENANCE

6.1. Cleaning the Screen

Gently wipe the screen with a soft, dry microfiber cloth. For stubborn marks, lightly dampen the cloth with water or a screen-specific cleaning solution (avoid harsh chemicals) and wipe gently. Do not spray liquid directly onto the screen.

6.2. Cleaning the TV Body

Wipe the TV frame and stand with a soft, dry cloth. Avoid using abrasive cleaners or solvents.

7. TROUBLESHOOTING

- **No Power:** Ensure the power cable is securely connected to both the TV and a working electrical outlet. Try plugging another device into the outlet to confirm it has power.
- **No Picture/Sound:** Check that the correct input source is selected. Verify all cable connections (HDMI, etc.) are secure. Try restarting connected devices.
- **Remote Not Working:** Replace the batteries in the Magic Remote. Ensure there are no obstructions between the remote and the TV. Re-pair the remote if necessary (refer to the Quick Start Guide for pairing instructions).
- **Network Connection Issues:** For Wi-Fi, check your router and ensure the TV is within range. For Ethernet, ensure the cable is connected and your network is active. Try restarting your router and modem.
- **Picture Quality Issues:** Adjust picture settings (brightness, contrast, color) in the TV's menu. Ensure you are viewing high-quality source content (e.g., 4K content for optimal 4K display).

8. SPECIFICATIONS

Feature	Specification
Brand	LG
Model Number	65UQ9000PUD
Screen Size	64.5 Inches (65-Inch Class)
Display Technology	LED
Resolution	4K Ultra HD (3,840 x 2,160)
Refresh Rate	60 Hz
Processor	α5 Gen 5 AI Processor 4K

Operating System	webOS 22
Connectivity Technology	Ethernet, Wi-Fi
Special Features	Miracast, Alexa Built-in, Google Assistant, Apple AirPlay, Apple HomeKit
Product Dimensions (with stand)	57.2"W x 10.7"D x 35.4"H
Item Weight	47.4 Pounds
Wattage	97.5 watts

9. WARRANTY AND SUPPORT

Your LG 65-Inch Class UQ9000 Series 4K Smart TV comes with a limited manufacturer's warranty. For detailed warranty information, please refer to the warranty card included in your product packaging or visit the official LG website. For technical support, troubleshooting assistance, or service inquiries, please contact LG Customer Service.

You can find contact information and additional resources on the [LG Store on Amazon](#) or the official LG Electronics website.