

POLY 2200-69390-001



Poly Studio R30 4K Video Conference System

USER MANUAL

1. Introduction

The Poly Studio R30 is an integrated USB video bar designed for small and huddle rooms, providing a comprehensive solution for video conferencing. It combines a 4K camera, advanced microphones, and a powerful speaker into a single device, ensuring high-quality audio and video experiences. This manual provides essential information for setting up, operating, maintaining, and troubleshooting your Poly Studio R30.



Figure 1: Front view of the Poly Studio R30 4K Video Conference System.

2. What's in the Box

Verify that all items are present in the package:

- Poly Studio R30 4K Video Conference System
- Power Adapter
- USB Cable
- Monitor Clamp (included for flexible mounting options)

3. Product Overview

The Poly Studio R30 integrates several key components into a sleek bar design:

- **4K Camera:** Features a 120-degree field of view and 5x digital zoom for clear video.
- **Microphone Array:** An advanced 3-microphone array designed to capture voices clearly while filtering out background noise.
- **Integrated Speaker:** Provides rich and clear audio output for all participants.
- **Mounting Options:** Includes an adjustable monitor clamp for easy attachment to displays.




Figure 2: Side view of the Poly Studio R30, highlighting its compact design.

4. Setup

The Poly Studio R30 is designed for quick and easy plug-and-play setup:

1. **Mounting:** Attach the Poly Studio R30 to your display using the included monitor clamp. Ensure it is securely fastened and positioned to capture the desired area of the room.
2. **Power Connection:** Connect the power adapter to the Poly Studio R30 and plug it into an electrical outlet.
3. **USB Connection:** Connect the provided USB cable from the Poly Studio R30 to an available USB port on your PC or Mac.
4. **Software Recognition:** Your computer should automatically recognize the Poly Studio R30 as a camera, microphone, and speaker device. No additional drivers are typically required.



MEET POLY STUDIO R30

The Poly Studio R30 delivers ultra-HD video quality, elevating your meetings to a new level.





COLLABORATE WITH CONFIDENCE

Experience unparalleled collaboration with advanced video capabilities, superior audio quality, and effortless setup. Enhance productivity, foster inclusivity, and create better connections. Transform the way you work, collaborate, and communicate.

Figure 3: Illustration of the simple plug-and-play setup for the Poly Studio R30.

5. Operating Instructions

Once set up, the Poly Studio R30 integrates seamlessly with popular video conferencing platforms:

1. **Launch Conferencing Application:** Open your preferred video conferencing software (e.g., Zoom, Microsoft Teams, Google Meet).
2. **Select Devices:** In the application's audio and video settings, select "Poly Studio R30" as your camera, microphone, and speaker.
3. **Start Meeting:** Begin your meeting. The Poly Studio R30 will automatically activate its intelligent features.

Key Features in Operation:

- **Poly DirectorAI:** This technology provides automatic framing and tracking, ensuring all participants are seen clearly. It can frame groups or track individual speakers.
- **NoiseBlockAI:** Intelligently blocks distracting background noises, allowing voices to be heard without interruption.
- **Acoustic Fence:** Creates a virtual sound barrier, focusing the microphone pickup on the area within the fence and eliminating sounds from outside that zone.

EVERYONE IS SEEN

Sharp 4K camera with 120-degree field of view



poly
PLANTRONICS & POLYCOM

Figure 4: The 120-degree field of view ensures everyone is seen in the meeting room.

DYNAMIC VIDEO

Clear facial expressions and body language
with DirectorAI close-up feature



Figure 5: Dynamic video with DirectorAI close-up feature for clear facial expressions and body language.

REMARKABLE AUDIO



NoiseBlockAI technology
to block outside noise.



Microphone with Acoustic Fence
technology that creates a virtual
sound barrier to keep the focus
on your call.



Figure 6: Remarkable audio features including NoiseBlockAI and Acoustic Fence technology.

6. Management

The Poly Studio R30 can be managed and configured using Poly Lens software:

- **Poly Lens Desktop App:** Install the Poly Lens Desktop application on your PC or Mac to control device settings, customize camera behaviors, and update firmware.
- **Poly Lens Cloud Management:** For IT administrators, Poly Lens cloud management software allows for remote management, monitoring, and deployment of devices over Wi-Fi, providing intelligent insights and scalable control.

MANAGEMENT

Poly Lens Desktop app to control device settings.
Poly Lens cloud management software to manage
devices over WIFI.

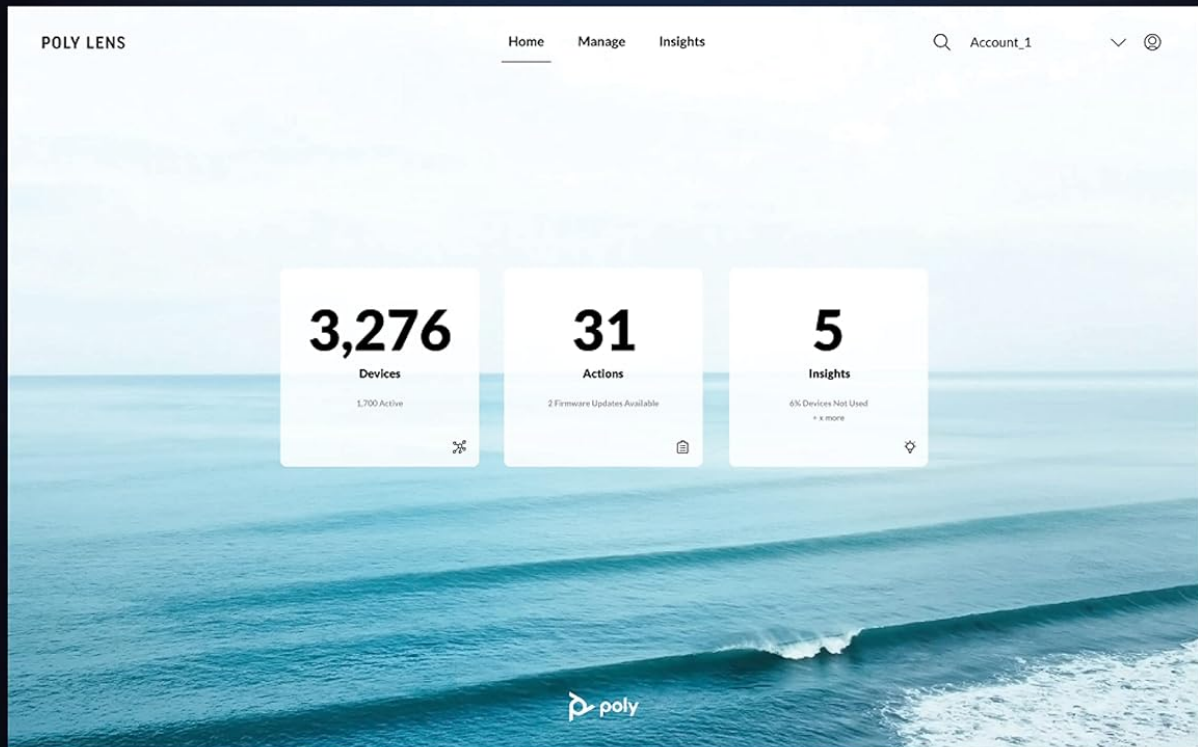


Figure 7: Poly Lens interface for device management and insights.

7. Maintenance

To ensure optimal performance and longevity of your Poly Studio R30, follow these maintenance guidelines:

- **Cleaning:** Use a soft, dry, lint-free cloth to clean the exterior of the device. Do not use liquid cleaners or aerosol sprays directly on the unit.
- **Lens Care:** Gently wipe the camera lens with a microfiber cloth specifically designed for optics. Avoid abrasive materials.
- **Firmware Updates:** Regularly check for and install firmware updates via the Poly Lens Desktop app or cloud management. Updates often include performance improvements and new features.
- **Storage:** When not in use for extended periods, store the device in a cool, dry place away from direct sunlight.

8. Troubleshooting

If you encounter issues with your Poly Studio R30, try the following steps:

Problem	Possible Solution
No video/audio in conferencing app	<ul style="list-style-type: none">• Ensure USB and power cables are securely connected.• Verify that "Poly Studio R30" is selected as the camera, microphone, and speaker in your conferencing application's settings.• Restart your computer and the conferencing application.
Poor video quality	<ul style="list-style-type: none">• Check your internet connection speed.• Ensure the camera lens is clean.• Verify adequate lighting in the room.
Poor audio quality (echo, muffled sound)	<ul style="list-style-type: none">• Ensure no other microphones or speakers are active in the room causing interference.• Adjust microphone and speaker levels in your conferencing application.• Check for firmware updates for the device.
Device not recognized by computer	<ul style="list-style-type: none">• Try a different USB port on your computer.• Try a different USB cable.• Restart your computer.

9. Specifications






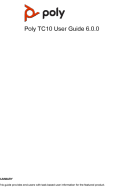
Feature	Detail
Model Number	2200-69390-001
Product Dimensions	20.59 x 8.94 x 3.98 inches
Item Weight	2.87 pounds
Video Capture Resolution	4K
Field of View	120 degrees
Digital Zoom	5x
Microphone Array	3-microphone array
Audio Technologies	NoiseBlockAI, Acoustic Fence
Video Technologies	Poly DirectorAI (auto-framing, speaker tracking)
Connectivity Technology	USB
Color	Black
Supported Platforms	Zoom, Microsoft Teams, Google Meet, and other PC/Mac video applications

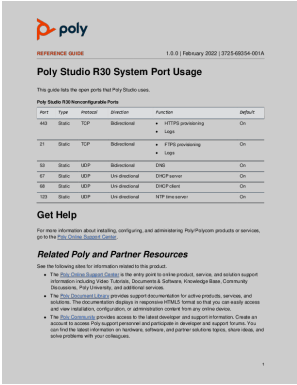
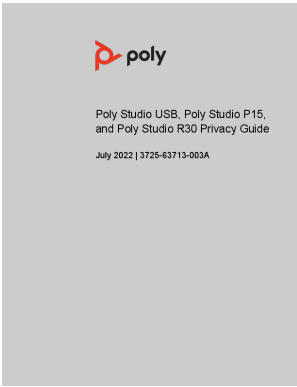
10. Warranty and Support

For detailed warranty information, please refer to the warranty card included with your product or visit the official Poly website. For technical support, product registration, and additional resources, please visit the Poly support portal or contact their customer service.

You can find more information and support at the official Poly website: www.poly.com

Related Documents - 2200-69390-001

	<p>Poly Camera Control App Release Notes 1.0.0 for Microsoft Teams Rooms on Windows</p> <p>Release notes for version 1.0.0 of the Poly Camera Control App, detailing its features, installation, usage, supported products, and troubleshooting for Poly Room Kits with Microsoft Teams Rooms on Windows.</p>
	<p>Poly Partner Mode User Guide 4.6.0: Comprehensive Guide for Video Conferencing Systems</p> <p>This user guide provides task-based information for Poly video conferencing systems operating in Partner Mode, covering setup, features, hardware, and troubleshooting for models like Poly Studio G62, G7500, and X-series.</p>
	<p>Poly Studio R30 User Guide: Setup, Features, and Operation</p> <p>Comprehensive user guide for the Poly Studio R30 USB video bar, detailing setup, hardware features, audio/video configuration, remote control functions, and troubleshooting tips for optimal video conferencing experiences.</p>
	<p>Poly TC10 Admin Guide 6.0.0</p> <p>A comprehensive guide for administrators on configuring, managing, and troubleshooting the Poly TC10 device, detailing its features, setup, and integration with various collaboration platforms like Zoom Rooms and Microsoft Teams Rooms.</p>
	<p>Poly Camera Control App Release Notes for Microsoft Teams Rooms</p> <p>Comprehensive release notes for version 2.0.0 of the Poly Camera Control App, detailing new features like default camera and tracking mode selection, installation guides, supported products, and FAQs for Poly Room Kits with Microsoft Teams Rooms on Windows.</p>
	<p>Poly TC10 User Guide: Setup, Operation, and Troubleshooting</p> <p>Comprehensive user guide for the Poly TC10 touch controller, covering setup, Poly Video Mode, Zoom Rooms, Microsoft Teams integration, device maintenance, and troubleshooting.</p>



[pdf] Guide

Poly Studio R30 Privacy Guide Additional 6 WebCams Webcam Gray Video Bar*2200 69390 001 Microphone 8 1076399617 conte
etilize |||

Poly Studio USB, Poly Studio P15, and Poly Studio R30 Privacy Guide July 2022 3725-63713-003A Conte
Before You Begin

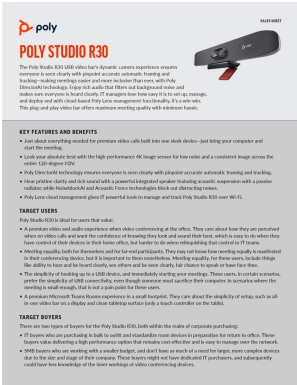
lang:en score:34 filesize: 207.47 K page_count: 10 document date: 2022-11-28

[pdf] Reference Guide Documentation Guide Borchure

Poly Studio R30 Port Usage Guide Additional 5 WebCams Webcam Gray Video Bar*2200 69390 001 Microphone 8 6 Manufacture
Brochure 4 1076399617 content etilize |||

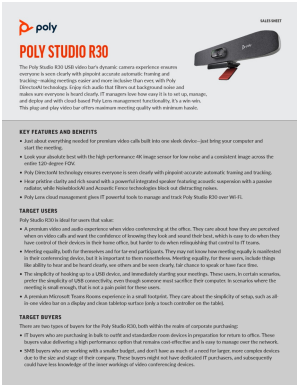
REFERENCE GUIDE 1.0.0 February 2022 3725-69354-001A Poly Studio R30 System Port Usage This gu
lists the open ports that Poly Studio uses. Poly Studio R30 Nonconfigurable Ports Port Type Protocol Direc
443 Static TCP Bidirectional Function HTTPS provisioning Logs 21 Static ...

lang:en score:32 filesize: 191.77 K page_count: 2 document date: 2022-11-28



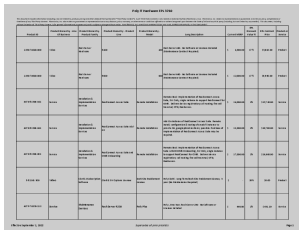
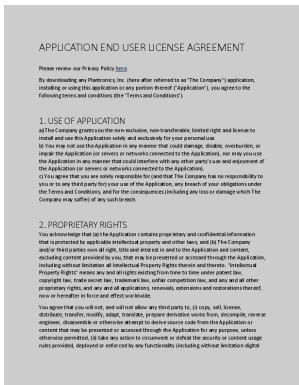
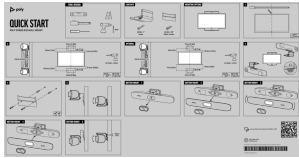
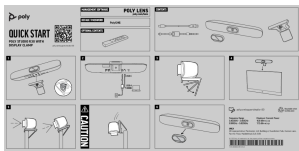
[pdf]

POLY STUDIO R30 1580852 Poly Studio Sales Sheet 15MAR22 HR shop exertis no en GB Product 102610 Link 64528 |||
SALES SHEET POLY STUDIO R30 The Poly Studio R30 USB video bar s dynamic camera experience en
ev ... with crisp, clear audio, making small/ huddle room meetings more inclusive than ever. PART NUMBE
2200-69390-001 -001 for North America, replace with regional suffix as needed LEARN MORE Poly Stu...
lang:en score:21 filesize: 515.38 K page_count: 3 document date: 2022-03-15



[pdf]

POLY STUDIO R30 ExertisHear pristine clarity and rich sound with a powerful integrated speaker featuring acoustic suspension pa
radiator while NoiseblockAI Acoustic 1580852 Poly Studio Sales Sheet 15MAR22 HRshop exertis se en GB Product 102610 Link 6
1580852 HR |||
SALES SHEET POLY STUDIO R30 The Poly Studio R30 USB video bar s dynamic camera experience en
ev ... with crisp, clear audio, making small/ huddle room meetings more inclusive than ever. PART NUMBE
2200-69390-001 -001 for North America, replace with regional suffix as needed LEARN MORE Poly Stu...
lang:en score:20 filesize: 515.38 K page_count: 3 document date: 2022-03-15



[pdf] Borchure

Poly Studio R30 with Display Clamp Quick Start Additional 1 WebCams Webcam Gray Video Bar*2200 69390 001 Microphone 8 6 Manufacturer Brochure 4 5 1076399617 content etilize ||| QUICK START POLY STUDIO R30 WITH DISPLAY CLAMP poly.com/support/studio-r30 poly.com/support/studio-r30 UKCA UK representative: Plantronics Ltd, Building 4, Foundation Park, Cannock Lane, Part 1st Floor, Maidenhead, SL6 3UD 2022 Poly. All trademarks are the property of their respective owners. 172...

lang:en score:19 filesize: 561.94 K page_count: 1 document date: 2022-11-28

[pdf] Borchure

Poly Studio R30 Wall Mount Quick Start Additional 2 WebCams Webcam Gray Video Bar*2200 69390 001 Microphone 8 6 Manufa Brochure 4 5 1 1076399617 content etilize ||| QUICK START POLY STUDIO R30 WALL MOUNT www.poly.com/support/studio-r30 2022 Poly. All trademarks are the property of their respective owners. 1725-69362-001B 06.22 ... lang:en score:18 filesize: 826.8 K page_count: 1 document date: 2022-11-28

[pdf] Datasheet

Studio P30 Product DatasheetStudio R30 Vancov1vanco sg 2022 12 ps DatasheetPoly VancoPoly USB Video Bar 2200 69390 001 842D2AA ABA IP Phone Warehousev1Poly Datasheetvanco psipphone warehouse content poly Poly Datasheet ||| ||| AN EASY-TO-USE USB VIDEO BAR FOR SMALL CONFERENCE SPACES BENEFITS Poly DirectorAI technology ensures everyone is seen clearly with pinpoint-accurate automatic framing and tracking. Connect to Poly Lens over Wi-Fi to ensure the device can always be managed from anywhere, even when not connected. AN EASY-TO-USE USB VIDEO BAR FOR SMALL CONFERENCE SPACES BENEFITS Poly DirectorAI technology ensures everyone is seen clearly with pinpoint-accurate automatic framing and tracking. Connect to Poly Lens over Wi-Fi to ensure the device can always be managed from anywhere, even when not connected. ... lang:en score:16 filesize: 778.97 K page_count: 2 document date: 2022-04-11

[pdf] Installation Guide

Poly End User License Agreement Swatko Melissa Additional 8 WebCams Studio R30 Webcam Gray Video Bar*2200 69390 001 Microphone 1076399617 content etilize ||| APPLICATION END USER LICENSE AGREEMENT Please review our Privacy Policy here. By downloading any Plantronics, Inc. here after referred to as The Company application, installing or using this application or portion thereof Application , you agree to the following terms and conditions the ... lang:en score:16 filesize: 123.62 K page_count: 3 document date: 2022-02-22

[pdf] Declaration of Conformity Warranty Price List

Alice Price List Mississippi Department of Information Technology Services Poly formerly Plantronics Polycorn mississippi pricelist & pricing poly content dam www legal doc pricelists ||| Poly IT Hardware EPL 3760 This document includes information including, but not limited to, product information, service information, and warranty information. Service Effective September 1, 2022 Supersedes all prior pricelists Page 599 Product ID 2200-69390-001 IT Hardware EPL 3760 Product Hierarchy - Line Product Hierarchy - Product Hierarchy ... lang:en score:9 filesize: 2.36 M page_count: 722 document date: 2022-09-02