

Kohler 25875-0

KOHLER Hyten 25875-0 Elevated Soft-Close Elongated Toilet Seat User Manual

1. INTRODUCTION AND OVERVIEW

The KOHLER Hyten Elevated Soft-Close Elongated Toilet Seat is designed to provide enhanced comfort and accessibility. This seat adds 3 inches (76 mm) of height to your existing toilet, making it ideal for individuals with limited mobility. It features Quiet-Close technology for silent operation, Quick-Attach hardware for easy installation, Grip-Tight bumpers for stability, and Quick-Release hinges for effortless cleaning. Crafted from durable plastic, this seat is designed to fit most elongated toilets.

2. PRODUCT FEATURES

- **3-inch (76 mm) Elevated Seating Surface:** Provides a comfortable height for users with limited mobility, mimicking a conventional toilet seat design.
- **Elongated Closed-Front Design:** Contoured for user comfort and designed to fit most elongated toilets.
- **Quiet-Close Technology:** The seat and lid close slowly and silently, preventing slamming.
- **Quick-Attach Hardware:** Simplifies installation, allowing fastening from above the bowl.
- **Quick-Release Functionality:** Enables easy removal of the seat from the toilet for convenient cleaning.
- **Grip-Tight Bumpers:** Securely hold the toilet seat in place, preventing shifting.
- **Durable Plastic Construction:** Ensures longevity and easy maintenance.

Elevated Seat Adds 3" Height to Your Existing Toilet

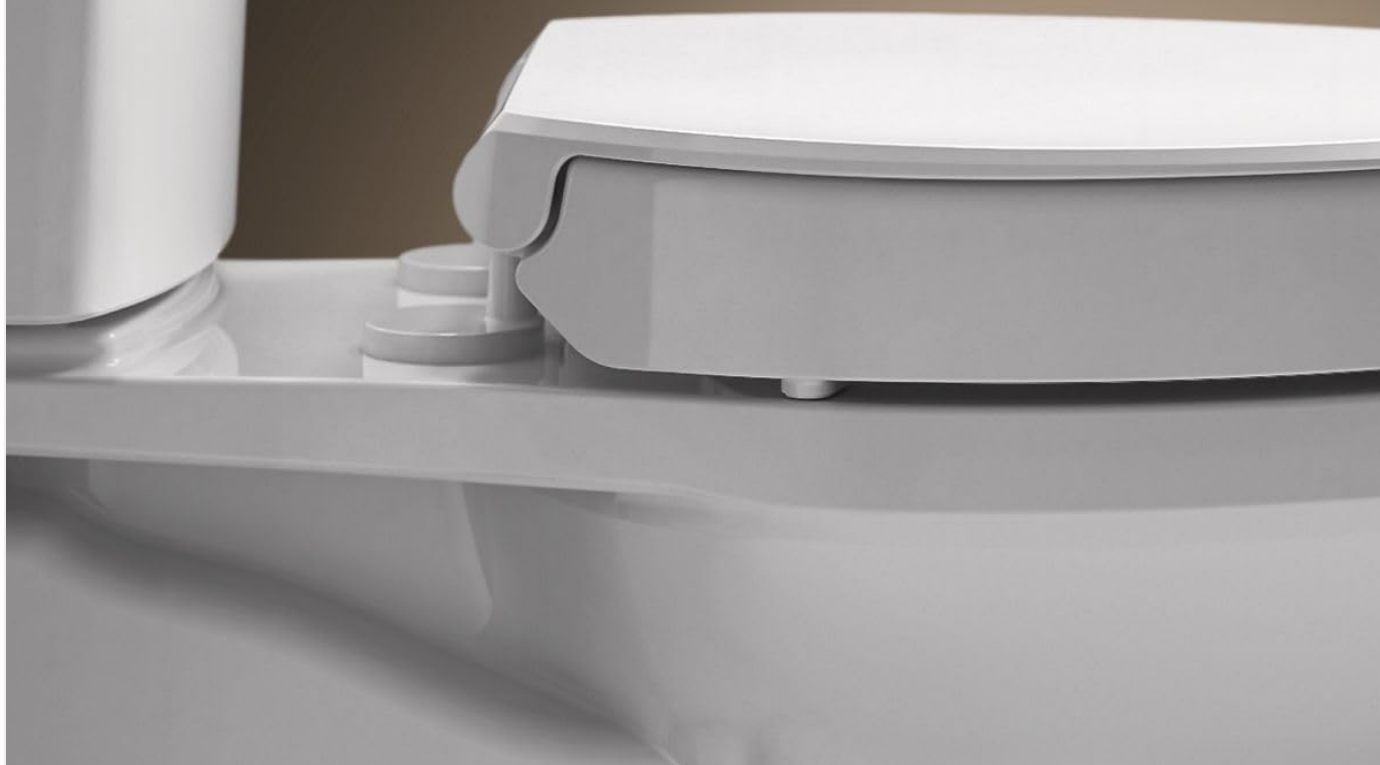


Image: The elevated seat seamlessly adds 3 inches of height to your existing toilet, enhancing accessibility.

Two Toilet Seat Sizes

Knowing the shape of your toilet bowl is crucial when choosing the right seat



18⁵/₈"
or more

Elongated
Toilet Seat



16³/₄"
or less

Round-Front
Toilet Seat

Image: Quick-Release functionality allows for easy seat removal, while Grip-Tight bumpers ensure the seat remains firmly in place.



Quick-Release™ Functionality

Allows easy seat removal

Grip-Tight Bumpers

Hold the seat
firmly in place



Image: Quiet-Close technology ensures that both the lid and seat close gently and silently, preventing any slamming.

3. SETUP AND INSTALLATION

Installation of the KOHLER Hyten toilet seat is designed to be straightforward, requiring only a Phillips screwdriver. Follow these steps for a secure fit:

1. **Prepare the Toilet Bowl:** Ensure the toilet bowl is clean and free of any old hardware.
2. **Install Anchors:** Unthread the screw from each anchor and fold the anchor. Push the folded anchor into the holes at the back of the toilet bowl. Repeat for both anchors.
3. **Confirm Anchor Unfold:** Verify that the anchors unfold completely on the bottom side of the bowl for a secure grip.
4. **Remove Post Covers:** Remove the post covers from the seat assembly and set them aside.
5. **Insert Posts:** Press the posts into the bottom of the seat hinge.
6. **Align and Place Seat:** Align the seat over the mounting holes on the toilet bowl and gently lower it.
7. **Adjust Alignment:** Confirm the toilet seat is aligned with the front of the toilet bowl. Rotate the posts as needed to align the mounting holes.

8. **Secure Screws:** Insert the screws through the mounting holes. Using a Phillips screwdriver, tighten the screws until the seat is firmly in place.
9. **Reattach Post Covers:** Press the post covers back onto the posts.

Your browser does not support the video tag.

Video: Official KOHLER installation guide for the Hyten Elevated Quiet-Close Toilet Seat, demonstrating step-by-step assembly.

4. OPERATING INSTRUCTIONS

The KOHLER Hyten toilet seat is designed for simple and intuitive operation:

- **Opening the Seat/Lid:** Gently lift the seat or lid to the desired open position. The hinges are designed to hold the seat in place.
- **Closing the Seat/Lid:** Gently push the seat or lid downwards. The Quiet-Close mechanism will engage, allowing it to close slowly and silently without slamming.
- **Quick-Release for Cleaning:** To remove the seat for cleaning, press the Quick-Release button located at the back of the seat hinge and lift the seat straight up. Reattach by aligning the seat over the posts and pressing firmly near the back hinges until it clicks into place.

5. MAINTENANCE AND CLEANING

To maintain the appearance and functionality of your KOHLER Hyten toilet seat, follow these cleaning guidelines:

- **Regular Cleaning:** Use a soft, damp cloth and mild soap to clean the seat and lid surfaces. Avoid abrasive cleaners, scrubbers, or harsh chemicals, as these can damage the finish.
- **Quick-Release for Thorough Cleaning:** Utilize the Quick-Release feature to easily detach the seat from the toilet. This allows for thorough cleaning of both the seat and the hard-to-reach areas of the toilet bowl.
- **Drying:** After cleaning, wipe the seat and lid dry with a soft cloth to prevent water spots.

6. TROUBLESHOOTING

If you encounter any issues with your KOHLER Hyten toilet seat, refer to the following common troubleshooting tips:

- **Seat is Loose:** Ensure the Quick-Attach screws are fully tightened. If the seat still feels loose, remove it, re-check that the anchors are unfolded correctly in the toilet bowl holes, and then reattach and tighten.
- **Lid/Seat is Slamming:** The Quiet-Close mechanism may be obstructed or damaged. Check for any debris around the hinges. If the issue persists, contact KOHLER customer support.
- **Difficulty Removing/Reattaching Seat:** Ensure you are pressing the Quick-Release button firmly when attempting to remove the seat. When reattaching, align the posts correctly and press down firmly until you hear a click.
- **Discoloration or Stains:** For plastic seats, discoloration is rare with proper cleaning. Avoid harsh chemicals. If stains persist, ensure regular cleaning with mild soap.

7. SPECIFICATIONS

Feature	Detail
Color	White
Brand	Kohler

Feature	Detail
Material	Plastic
Style	Elongated
Shape	Oval
Product Dimensions	18.75"L x 14.44"W
Item Weight	5.6 Pounds
UPC	885612992000
Manufacturer	KOHLER
Part Number	25875-0
Size	Elongated
Finish	White
Item Package Quantity	1
Included Components	Hardware
Batteries Required?	No
Warranty Description	KOHLER® Toilets and Seats Limited Warranty
ASIN	B09RG3M5ZS
Date First Available	March 6, 2022

8. WARRANTY AND SUPPORT

This KOHLER Hyten toilet seat is covered by the KOHLER® Toilets and Seats Limited Warranty. For detailed information regarding warranty coverage, terms, and conditions, please refer to the official warranty documentation included with your product or visit the official KOHLER website.

For technical assistance, replacement parts, or any other inquiries, please contact KOHLER customer support through their official channels.