

Manuals+

[Q & A](#) | [Deep Search](#) | [Upload](#)

[manuals.plus](#) /

› [Faithfull](#) /

› [Faithfull FPPSLFF20BS LED Rechargeable Work/Camping Light User Manual](#)

Faithfull FPPSLFF20BS

Faithfull FPPSLFF20BS LED Rechargeable Work/Camping Light User Manual

Model: FPPSLFF20BS

INTRODUCTION

Thank you for purchasing the Faithfull FPPSLFF20BS LED Rechargeable Work/Camping Light. This manual provides important information regarding the safe operation, setup, maintenance, and troubleshooting of your device. Please read this manual thoroughly before use and retain it for future reference.

This versatile light features a powerful 20W LED providing 2000 lumens, an integrated Bluetooth speaker, and a power bank function for charging other devices. It is designed for various applications including home use, leisure activities, camping, and parties.

SAFETY INSTRUCTIONS

- Do not look directly into the LED light when it is on, as this may cause eye damage.
- Keep the device away from water and excessive moisture.
- Do not attempt to disassemble or modify the device. Repairs should only be performed by qualified personnel.
- Use only the provided 240V AC charger for recharging.
- Keep out of reach of children.
- Ensure proper ventilation during charging and operation.

PRODUCT OVERVIEW

The Faithfull FPPSLFF20BS is a compact and energy-efficient LED light with multiple functionalities.



Figure 1: Front view of the Faithfull FPPSLFF20BS LED Work Light. This image shows the central LED light surrounded by a protective grille, with the 'FAITHFULL' brand name visible at the top.

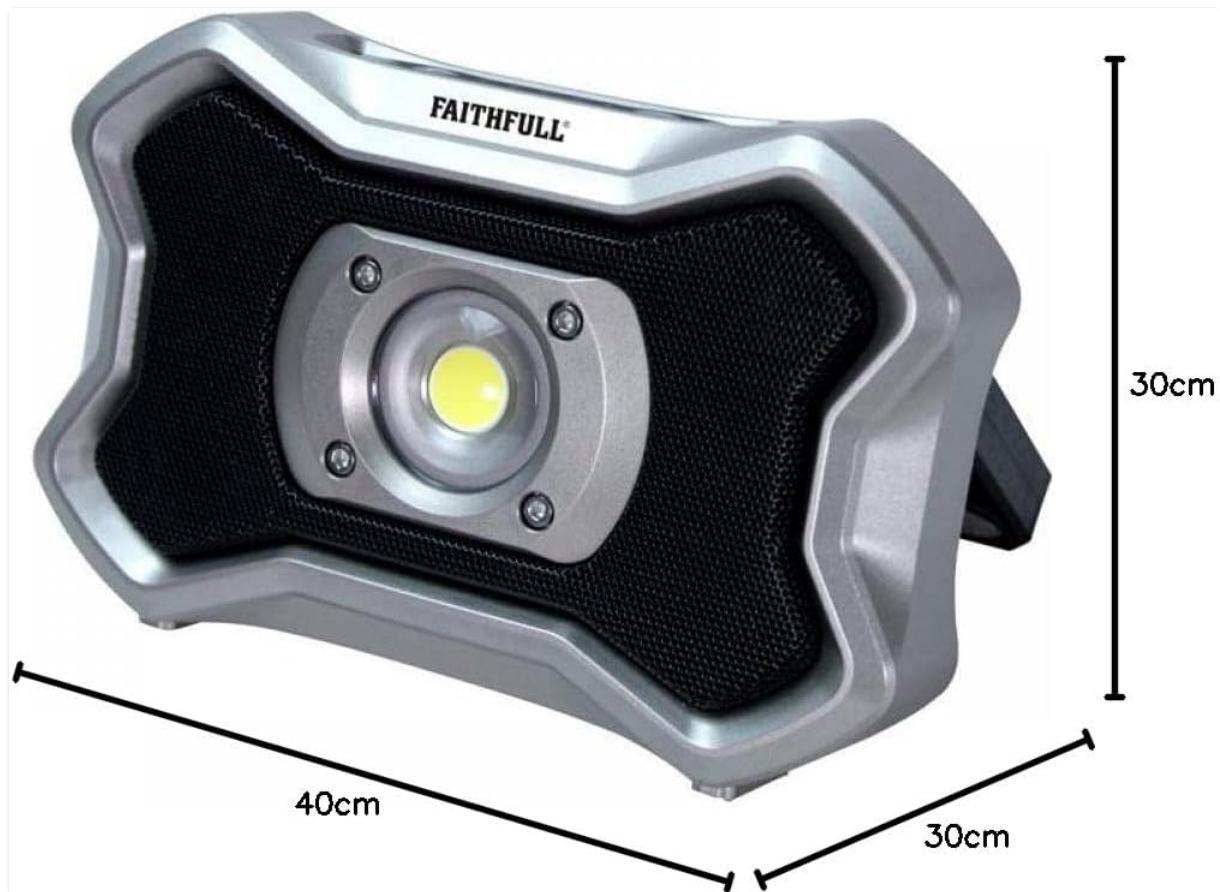


Figure 2: Side view of the Faithfull FPPSLFF20BS LED Work Light, illustrating its approximate dimensions: 40cm length, 30cm width, and 30cm height. The foldable magnetic feet are also visible.

Key Features:

- 20W LED with 2000 lumens output.
- Five light output modes.
- Up to 8 hours of operation time.
- Integrated wireless Bluetooth speaker.
- Power bank function for charging external devices.
- Foldable magnetic feet with a ratchet stand.
- Supplied with a 240V AC charger.

SETUP

Charging the Device:

1. Locate the charging port on the device.
2. Connect the provided 240V AC charger to the charging port.
3. Plug the charger into a suitable power outlet.
4. The charging indicator light will illuminate (refer to device for specific indicator behavior).
5. A full charge takes approximately 4 hours. Disconnect the charger once fully charged.

Positioning the Light:

- Unfold the magnetic feet to create a stable base.
- Adjust the ratchet stand to angle the light as required.
- The magnetic feet allow the light to be securely attached to metallic surfaces.

OPERATING INSTRUCTIONS

Light Operation:

1. Press the power button to turn on the light.
2. Subsequent presses of the power button will cycle through the five light output modes (e.g., High, Medium, Low, Strobe, SOS).
3. Press and hold the power button to turn off the light.

Bluetooth Speaker Operation:

1. Ensure the light is powered on.
2. Activate Bluetooth on your mobile device or other compatible audio source.
3. Search for available Bluetooth devices. The light should appear as "Faithfull Speaker" or similar.
4. Select the light from the list to pair. A confirmation sound may indicate successful pairing.
5. Once paired, you can play audio through the integrated speaker.

Power Bank Function:

1. Locate the USB output port on the device.
2. Connect your mobile phone or other USB-powered device to this port using a compatible USB cable (not supplied).
3. The light will begin charging your connected device.
4. Monitor the charge level of your external device.

MAINTENANCE

- **Cleaning:** Wipe the device with a soft, damp cloth. Do not use abrasive cleaners or solvents.
- **Storage:** Store the light in a cool, dry place when not in use. For prolonged storage, ensure the battery is partially charged (around 50%) and recharge every 3-6 months to maintain battery health.
- **Battery Care:** Avoid fully discharging the battery frequently. Recharge promptly when the battery level is low.

TROUBLESHOOTING

Problem	Possible Cause	Solution
Light does not turn on.	Battery is discharged.	Recharge the device using the provided charger.
Bluetooth speaker not pairing.	Bluetooth not enabled on source device; device out of range; already paired to another device.	Ensure Bluetooth is on and discoverable. Move source device closer. Disconnect from other devices.
External device not charging via power bank.	Light battery too low; incorrect cable; external device not compatible.	Ensure the light has sufficient charge. Use a known good USB cable. Check external device compatibility.
Short operating time.	Battery not fully charged; operating on highest light mode.	Ensure a full 4-hour charge. Use lower light modes for extended battery life.

SPECIFICATIONS

Model:	FPPSLFF20BS
Power:	20 Watts
Lumen Output:	2000 lumens
Light Modes:	5 modes
Operating Time:	Up to 8 hours (depending on mode)
Charging Time:	Approximately 4 hours
Power Source:	Battery powered (Rechargeable)
Charger:	240V AC charger (included)
Weight:	1.3 Kilograms
Color:	Silver
Features:	Integrated Bluetooth speaker, Power bank function, Foldable magnetic feet with ratchet stand

WARRANTY AND SUPPORT

For warranty information and technical support, please refer to the official Faithfull website or contact your retailer. Keep your proof of purchase for any warranty claims.

Manufacturer: Faithfull

Website: [Faithfull Tools Store](#) (Link provided for reference to the brand's Amazon store)