

Wahl 8171

Wahl Professional 8171 Cordless Detailer Li Hair Clipper Instruction Manual

1. INTRODUCTION

This manual provides essential information for the safe and effective use of your Wahl Professional 8171 Cordless Detailer Li Hair Clipper. The Wahl Professional 8171 Cordless Detailer Li is a high-performance hair clipper designed for precise trimming, outlining, and detailed work. It features a powerful Lithium-Ion battery for extended cordless operation and a T-Wide blade for close cuts.





Image 1: Wahl Professional 8171 Cordless Detailer Li Hair Clipper.

2. PACKAGE CONTENTS

Verify that all items are present in your package:

- Wahl 8171 Detailer Li Hair Clipper
- 3 Trimming Guides (1/16", 1/8", 3/16")
- Recharging Transformer
- Recharging Stand
- Pre-Shave Brush
- Wahl Clipper Oil
- Cleaning Brush
- Operating Instructions (this manual)
- Red Blade Guard



Image 2: Included accessories for the Wahl Professional 8171 Cordless Detailer Li.

3. SAFETY INFORMATION

Read all instructions before using this appliance.

- Avoid contact with eyes, skin, and water.
- Do not use on infants or children.
- Follow proper cleaning and maintenance procedures.
- Always unplug the trimmer when not in use.
- Keep the trimmer away from heat sources and do not store it in direct sunlight.
- Always use the trimmer with the safety guard in place.
- If the trimmer becomes damaged, stop using it immediately and contact the manufacturer.

4. SETUP

4.1 Initial Charging

Before first use, fully charge the trimmer. Connect the recharging transformer to the recharging stand, then plug the transformer into a suitable electrical outlet. Place the trimmer onto the stand. The indicator light on the trimmer will illuminate to show charging status. A full charge takes approximately 45 minutes and provides up to 100 minutes of cordless run time.



Image 3: Trimmer placed on its charging stand.

Your browser does not support the video tag.

Video 1: Demonstrates the Wahl Professional 5 Star Detailer cordless Trimmer, including charging and handling.

4.2 Blade Adjustment (Zero-Overlap)

The T-Wide blade can be adjusted for a zero-overlap cut, providing the closest possible trim. This adjustment requires careful attention to avoid skin irritation. Refer to the detailed operating instructions provided in the box for precise blade alignment procedures. Incorrect adjustment may lead to nicks or cuts.

5. OPERATING INSTRUCTIONS

5.1 Powering On/Off

To turn the trimmer on, slide the power switch located on the side of the unit upwards. To turn it off, slide the switch downwards.

5.2 Attaching Trimming Guides

Select the desired trimming guide (1/16", 1/8", or 3/16") for your preferred hair length. Align the guide with the trimmer blade and push it firmly until it clicks into place. Ensure the guide is securely attached before use.

5.3 Trimming and Detailing

The Wahl Professional 8171 is designed for super close trimming, outlining, and accurate detail work. Hold the trimmer at an appropriate angle against the skin, moving it smoothly and steadily. For outlining, use the edge of the blade to create crisp lines. For blending and artwork, use controlled movements to achieve desired results.

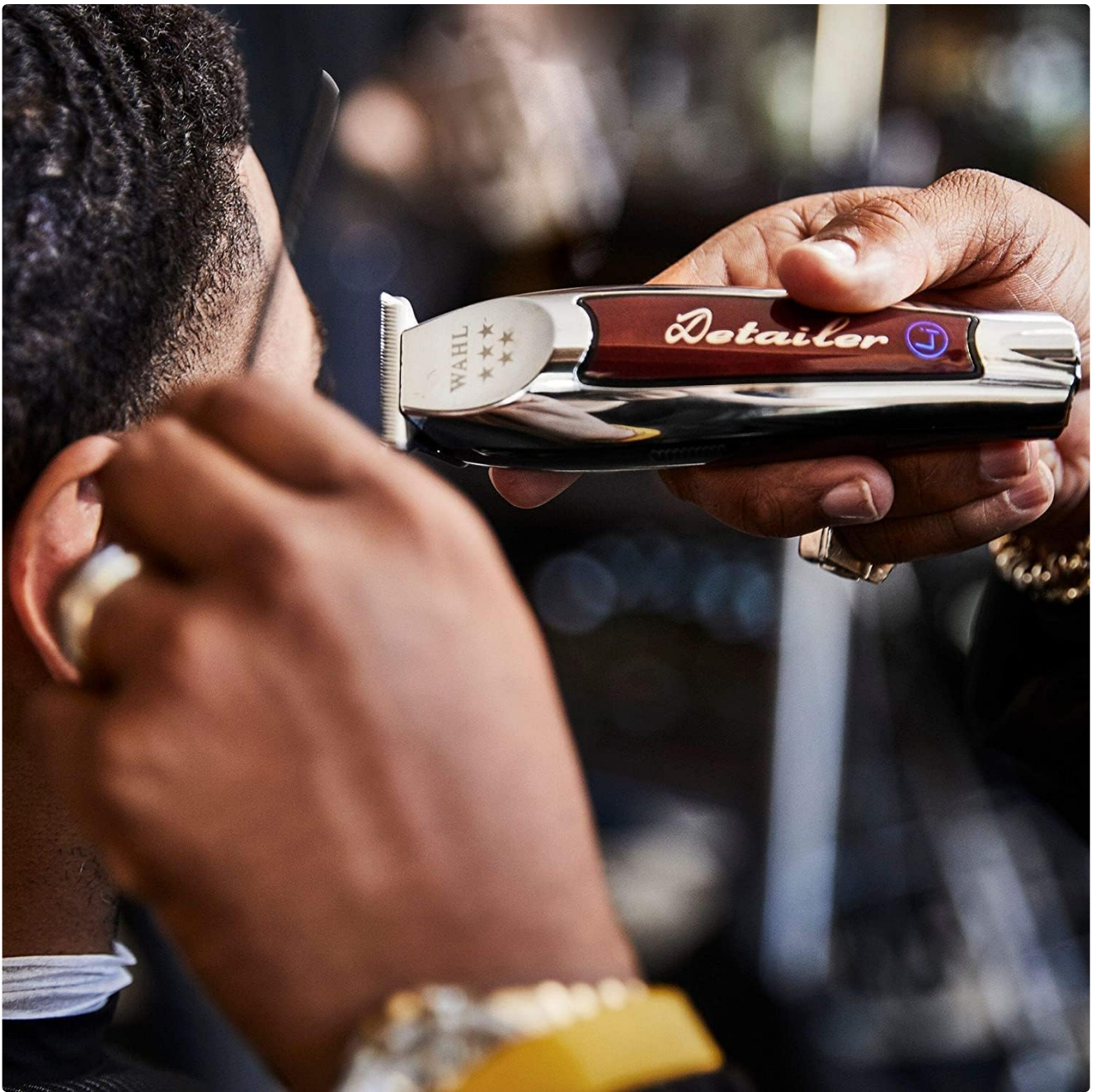


Image 4: Trimmer being used for outlining a hairline.



Image 5: Close-up of the trimmer in use for detailed hair work.

6. MAINTENANCE

6.1 Cleaning the Blades

After each use, turn off the trimmer and use the provided cleaning brush to remove any loose hairs from the blades. The blades are not designed for easy removal without unscrewing, so clean them carefully while attached to the unit.

6.2 Oiling the Blades

To maintain optimal cutting performance and extend blade life, apply a few drops of Wahl clipper oil to the blades before and after each use. Turn the trimmer on for a few seconds to allow the oil to distribute evenly across the blades.

6.3 Storage

Store the trimmer in a dry, cool place. Always place the red blade guard over the blades when the trimmer is not in use to protect them from damage.

7. TROUBLESHOOTING

- **Trimmer not turning on:**

Ensure the battery is fully charged. Check that the recharging transformer is properly connected to the stand and a working electrical outlet.

- **Reduced cutting performance:**

Clean the blades thoroughly to remove any hair buildup. Apply Wahl clipper oil to the blades. If performance does not improve, the blades may need professional sharpening or replacement.

- **Excessive heat during operation:**

Ensure the blades are properly oiled. Avoid prolonged continuous use; allow the trimmer to cool down periodically. Excessive friction from dry blades can cause heat.

- **Unusual noise or vibration:**

Turn off the trimmer and inspect the blades for any foreign objects or damage. Ensure the blades are securely fastened. If the issue persists, contact customer support.

8. SPECIFICATIONS

Brand	Wahl
Model Number	08171-068
Product Dimensions	10.63 x 2.36 x 1.57 inches
Item Weight	10.58 ounces (300 Grams)
Battery Type	Lithium Ion
Charge Time	45 Minutes
Run Time	100 Minutes
Blade Type	T-Wide Blade (2215)
Cutting Length	0.4mm (adjustable to zero-overlap)
Power Source	Battery Powered (Cord/Cordless)

9. WARRANTY AND SUPPORT

For detailed warranty information, product registration, and customer support, please visit the official Wahl website or contact their customer service department. Keep your purchase receipt as proof of purchase for any warranty claims.

