

DOVOX Single Din Bluetooth Marine Audio

DOVOX Single Din Bluetooth Marine Audio Receiver Instruction Manual

Model: Single Din Bluetooth Marine Audio

INTRODUCTION

This manual provides detailed instructions for the installation, operation, and maintenance of your DOVOX Single Din Bluetooth Marine Audio Receiver. Please read this manual thoroughly before using the product to ensure proper function and safety. Keep this manual for future reference.

SAFETY INFORMATION

- Ensure proper wiring connections to prevent short circuits or damage.
- Do not operate the unit in wet conditions unless specifically designed for marine use and properly installed.
- Avoid disassembling the unit; refer servicing to qualified personnel.
- Maintain a safe listening volume to avoid hearing damage and ensure awareness of surroundings.
- Operating voltage is DC 12V. Ensure your vehicle's electrical system matches this requirement.

PACKAGE CONTENTS

Verify that all items are present in the package:

- Truck Bluetooth Head Unit (DOVOX Single Din Bluetooth Marine Audio Receiver)
- External Microphone
- IR Remote Control
- Installation Kits (Mounting hardware, wiring harness)

Digital LCD Display&Physical Buttons

This stereo features digital LCD, 7-color buttons and rotary Knob, which brings you perfect visual experience and lets you control the unit easily.



Image: Package contents of the DOVOX Single Din Bluetooth Marine Audio Receiver. This includes the main head unit, an external microphone for clear calls, an infrared remote control for convenient operation, and all necessary installation kits such as mounting brackets and wiring harnesses.

PRODUCT OVERVIEW

Front Panel Controls and Inputs

Front Panel Buttons & USB/SD/AUX Input



Image: Detailed diagram of the receiver's front panel, highlighting the power/source button, microphone, volume/select knob, LCD display, IR remote sensor, 2.1A USB charging port, standard USB port, AUX input, and various function buttons for playback control and band selection.

- **Power/SRC Button:** Turns the unit on/off and cycles through audio sources (FM, AM, Bluetooth, USB, SD, AUX).
- **Volume/Select Knob:** Rotates to adjust volume; presses to enter menu options or confirm selections.
- **LCD Display:** Shows current time, station frequency, song information, and menu settings.
- **USB Ports:** One for media playback (USB/MP3 Player) and one for 2.1A quick charging.
- **SD Card Slot:** For playing media from an SD card.
- **AUX-IN Jack:** 3.5mm input for external audio devices.
- **Microphone:** Built-in for hands-free calling.
- **RGB Backlight Buttons:** Customizable 7-color illumination for physical keys.

Digital LCD Display and RGB Backlight Buttons

What's in the Box



- ★ Single Din Stereo Receiver
- ★ Wireless Remote
- ★ External Microphone
- ★ Accessories



Image: The receiver's high-resolution digital LCD display and physical buttons, demonstrating the customizable 7-color RGB backlight options. The display shows information such as time, telephone numbers, song titles, and radio channels, ensuring clear visibility.

The unit features a high-resolution LCD display for clear information readout and 7-color customizable RGB backlight buttons to match your vehicle's interior or personal preference.

SETUP AND INSTALLATION

Pre-Installation Checklist

- Ensure the vehicle's electrical system is 12V DC.
- Disconnect the vehicle's negative battery terminal before starting installation.
- Confirm the dash opening size is standard single DIN (approximately 7" x 2").

Wiring Diagram

Refer to the included wiring harness and diagram for correct connections. Common connections include:

- **Yellow Wire:** Constant 12V (Battery)
- **Red Wire:** Switched 12V (Accessory/Ignition)

- **Black Wire:** Ground
- **Blue Wire:** Power Antenna/Amplifier Remote Turn-On
- **Speaker Wires:** Color-coded for front left/right and rear left/right speakers.
- **RCA Output:** For connecting external amplifiers or subwoofers.

Connect the external microphone to the designated input on the rear of the unit for optimal hands-free calling performance.

Physical Installation

1. Mount the metal sleeve into the dashboard opening.
2. Secure the sleeve using the bending tabs.
3. Make all necessary electrical connections (power, ground, speakers, antenna, microphone).
4. Slide the head unit into the mounted sleeve until it locks into place.
5. Reconnect the vehicle's negative battery terminal.

OPERATING INSTRUCTIONS

Basic Operation

- **Power On/Off:** Press the **SRC** button briefly to turn on. Press and hold to turn off.
- **Source Selection:** Press the **SRC** button repeatedly to cycle through FM, AM, Bluetooth, USB, SD, and AUX modes.
- **Volume Adjustment:** Rotate the **VOL/SEL** knob clockwise to increase volume, counter-clockwise to decrease.

Bluetooth Connectivity

The unit features Bluetooth 5.0 for stable wireless connections.

1. Pairing:

- Ensure the unit is in Bluetooth mode (display shows "BT AUDIO").
- On your smartphone or Bluetooth device, search for available devices.
- Select "DOVOX" from the list. No password is typically required.
- Once paired, the display will confirm connection.

2. Hands-Free Calling:

- With your phone paired, incoming calls will be routed through the stereo.
- Press the **Answer** button (often the green phone icon) on the unit or remote to accept a call.
- Use the external microphone for clear voice transmission.
- Press the **End Call** button (often the red phone icon) to hang up.

3. A2DP Music Streaming:

- Once paired, audio from your device will stream wirelessly to the receiver.
- Use the unit's playback controls (Play/Pause, Next/Previous Track) or your device to manage music.
- Supports ID3 Tag Song Readout for displaying song information.

Clearer Bluetooth Call with Dual Mics

This single din stereo comes with an external Mic and built-in internal Mic, which guarantees the voice can be clear and stable in bluetooth calls.



Image: The receiver integrated into a car dashboard, illustrating its dual microphone system (internal and external) for clear and stable Bluetooth hands-free calls. A smartphone is shown connected, displaying an active call.

A2DP Bluetooth Music Wave

This marine radio can play your phone music by Bluetooth A2DP. Instantly share your favorite music with your friends or family.

★ Bluetooth Connectivity ★ ID3 Tag Song Readout ★ Power-off Memory



Image: The receiver displaying "BT AUDIO" while streaming music via Bluetooth A2DP. The image conveys the enjoyment of wireless music streaming, highlighting Bluetooth connectivity, ID3 Tag Song Readout, and power-off memory features.

FM/AM Radio Operation

The unit includes an FM/AM RDS radio with 30 station memory.

- **Band Selection:** Press the **BAND** button to switch between FM1, FM2, FM3, AM1, and AM2 bands.
- **Automatic Search:** Press and hold the **Seek Up/Down** buttons to automatically search for the next strong station.
- **Manual Tuning:** Briefly press the **Seek Up/Down** buttons to manually adjust the frequency.
- **Store Presets:** Tune to a desired station, then press and hold one of the numeric preset buttons (1-6) to save it.
- **Recall Presets:** Briefly press a numeric preset button (1-6) to recall a saved station.
- **RDS Function:** Displays information like station name and song title (if broadcasted by the station).

Relax with FM/AM RDS Radio

Built-in FM/AM RDS radio with 30 station memory, you can adjust the frequency to get latest news, traffic conditions, music broadcast etc.



Image: The receiver's display showing FM radio operation, with frequency and RDS information. This illustrates the built-in FM/AM RDS radio with 30 station memory, allowing users to access news, weather, and music broadcasts.

USB/SD/AUX Playback

- **USB/SD:** Insert a USB drive or SD card into the respective slot. The unit will automatically switch to USB/SD mode and begin playback.
- **AUX-IN:** Connect an external audio device (e.g., MP3 player, smartphone) to the 3.5mm AUX-IN jack. Select AUX mode using the **SRC** button.
- **Playback Controls:** Use the Play/Pause, Next/Previous Track buttons for media control.

Audio Play Modes & 2.1A Quick Charge

Dual USB for simultaneous 2.1A charging and USB connection, Micro SD card reader, Aux-in let you easy to find a way to play.

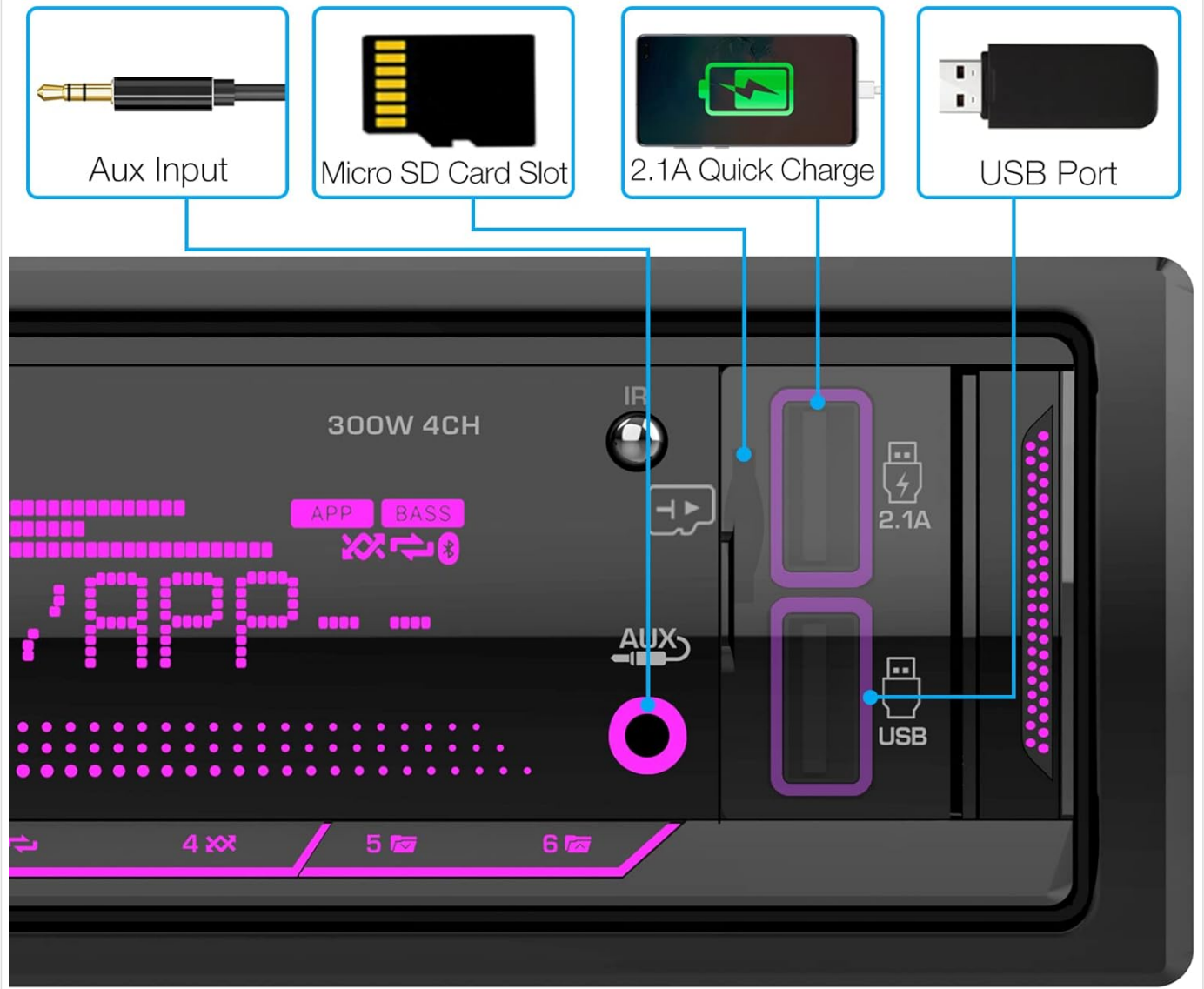


Image: A detailed view of the receiver's various audio input modes and charging capabilities, including the Aux Input, Micro SD Card Slot, a 2.1A Quick Charge USB port, and a standard USB Port for versatile media playback and device charging.

APP Remote Control

Download the "EwayLink" APP on your smartphone (iOS/Android) to control the stereo wirelessly. Follow the app's instructions for pairing and operation.

2.1A Quick Charge

The dedicated 2.1A USB port provides fast charging for compatible devices, ensuring your phone stays powered during your travels.

Sound Settings

Press the **VOL/SEL** knob to cycle through audio settings such as BASS, TREBLE, BALANCE, FADER, and EQ presets. Rotate the knob to adjust values.

Excellent Sound Effects

Preset EQ and left&right Amplifier lets the music flow in this 300W(4x75W) auto radio. You can control the bass, treble, balance and more.



Image: The receiver installed in a boat's console, with visual sound waves emanating from it, symbolizing excellent sound effects. This highlights the ability to adjust preset EQ, bass, treble, balance, and fader for a superior musical experience.

Power-off Memory

The unit automatically remembers the last played track, volume setting, and radio frequency before power-off, resuming playback from where it left off when powered on again.

Power-off Memory - No Afraid of Power Failure

Automatically memory the track you play before power-off; continue playing song/frequency from last heard.

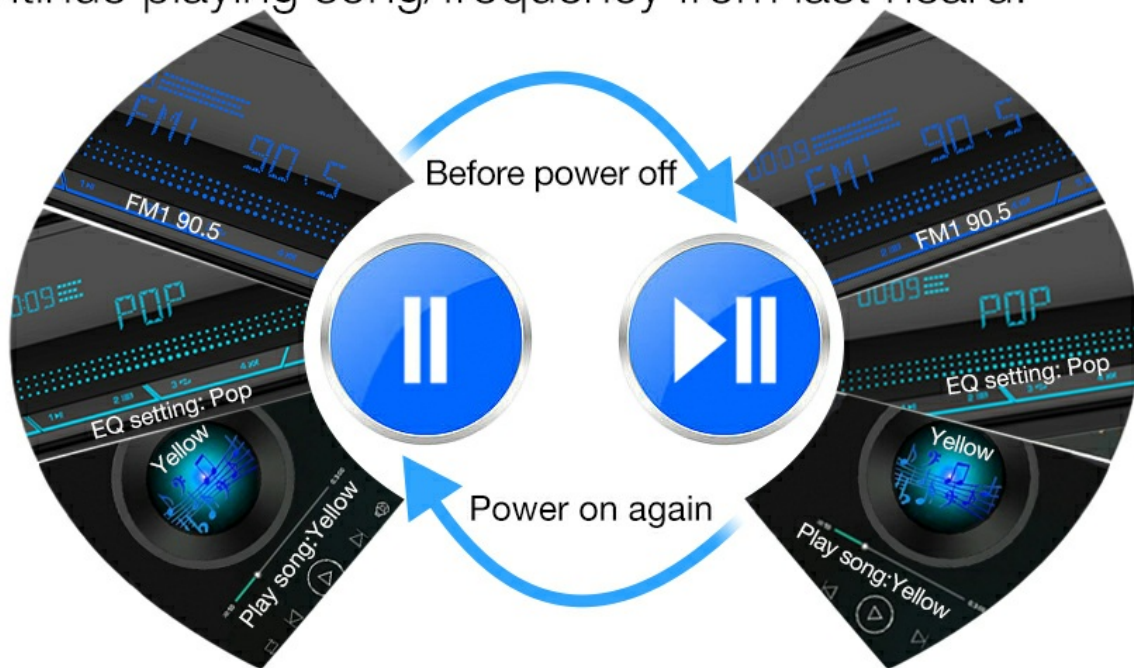


Image: A visual representation of the power-off memory feature, demonstrating how the unit automatically saves and resumes the last played song or radio frequency and volume settings after being powered off and on again.

MAINTENANCE

- Clean the front panel with a soft, dry cloth. Avoid abrasive cleaners.
- Keep USB ports and SD card slots free of dust and debris.
- Ensure proper ventilation around the unit to prevent overheating.

TROUBLESHOOTING

Problem	Possible Cause	Solution
No power	Incorrect wiring; Blown fuse; Loose connection.	Check power and ground connections. Inspect and replace fuse if necessary. Ensure all wires are securely connected.
No sound	Volume too low; Mute activated; Incorrect speaker wiring; Faulty speakers.	Increase volume. Deactivate mute. Check speaker connections. Test with different speakers if possible.
Bluetooth not connecting	Device not in pairing mode; Incorrect device selected; Interference.	Ensure unit is in BT mode. Make sure your device's Bluetooth is on and discoverable. Try restarting both devices.
Radio reception poor	Antenna not connected; Weak signal; Interference.	Check antenna connection. Try tuning to a stronger station. Move away from sources of electrical interference.
USB/SD not playing	Unsupported file format; Corrupted media; Loose connection.	Ensure media is in supported format (MP3). Try a different USB/SD card. Check connection.

SPECIFICATIONS

Feature	Detail
Model Number	Single Din Bluetooth Marine Audio
Product Dimensions	7"D x 4.52"W x 1.97"H
Item Weight	1.43 pounds
Working Voltage	DC 12V
Max Power Output	4x75W (300W Pre-Amp)
Connectivity Technology	Bluetooth 5.0, USB 2.0
Controller Type	IR Remote, EwayLink APP
Compatible Devices	iOS/Android
Connector Type	USB, SD, AUX, RCA
Audio Output Mode	Stereo/Mono
Surround Sound Channel Configuration	4
Special Features	Bluetooth Calls & Music Streaming, RDS, Subwoofer Output, 2.1A Quick Charge, RGB Backlight
FM Frequency Range	87.5MHz-107.9MHz
AM Frequency Range	530-1710KHz

WARRANTY AND SUPPORT

For warranty information or technical support, please refer to the contact details provided with your purchase or visit the official DOVOX website. Keep your proof of purchase for any warranty claims.