

[manuals.plus](#) /

› [SONOFF](#) /

› [SONOFF M5-3C-86 SwitchMan Smart Wall Switch User Manual](#)

SONOFF M5-3C-86

SONOFF M5-3C-86 SwitchMan Smart Wall Switch User Manual

Model: M5-3C-86

1. INTRODUCTION

The SONOFF M5-3C-86 SwitchMan is a 3-gang mechanical smart wall switch designed for modern smart homes. It offers versatile control options including local physical buttons, mobile application control via eWeLink, and voice control through popular smart assistants. This manual provides essential information for installation, operation, and maintenance of your M5-3C-86 smart switch.



Figure 1: Front view of the SONOFF M5-3C-86 SwitchMan Smart Wall Switch.

2. KEY FEATURES

- **Multi-Control Options:** Supports physical momentary buttons for local control, eWeLink APP for remote management, and voice control via Alexa, Google Home, Alice, and Siri shortcuts.
- **Dimmable LED Indicator:** The LED indicator on each button can be adjusted to various brightness levels for user preference and comfort.
- **Smart Scene Integration:** Ability to create smart scenes, such as linking with a door sensor to automatically turn on lights upon entry.
- **Scheduling and Timing:** Set schedules, loop timers, and countdown timers for automated control of connected lights or appliances.
- **Safety and Reliability:** Constructed with high-temperature resistant PC V0 material, ensuring excellent flame-retardance. CE, UKCA, CQC, and SRRC certified for safety.
- **Standard Fit:** 3-gang 86 mm wall mount standard, compatible with EU wall mounts.

- **Wi-Fi Connectivity:** Operates on 2.4GHz Wi-Fi for seamless integration into your smart home network.
- **Power Requirements:** Requires both live and neutral wires for operation.

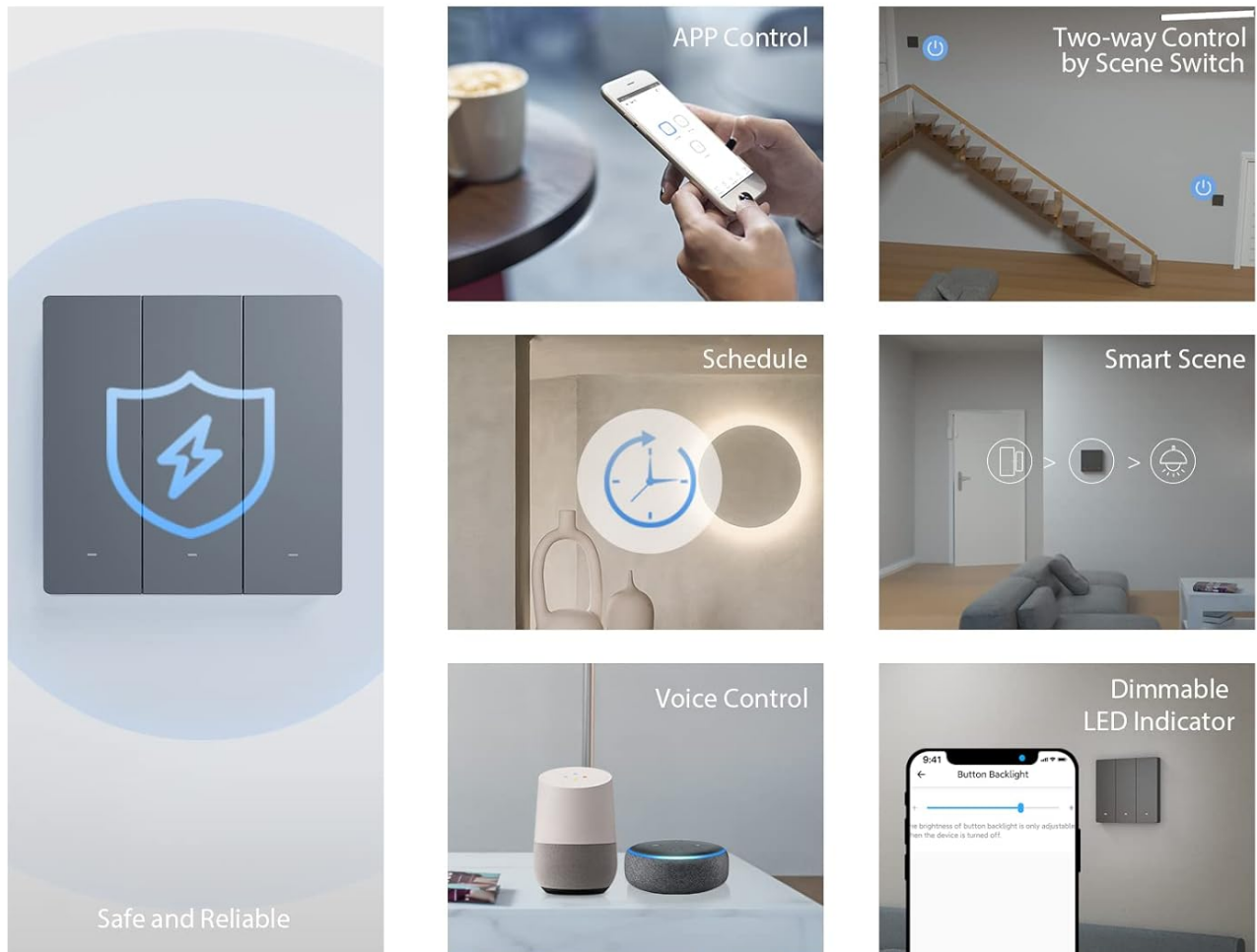


Figure 2: Overview of SONOFF M5 SwitchMan key features.

3. SETUP AND INSTALLATION

3.1 Before Installation

- Ensure power is turned off at the circuit breaker before beginning any electrical work.
- Verify that your wall box has both live and neutral wires available, as this device requires both for operation.
- Gather necessary tools: screwdriver, wire strippers, voltage tester.

3.2 Wiring Diagram

Connect the wires according to the following diagram. It is recommended to consult a qualified electrician if you are unsure about the wiring process.

Double As Smart & Safe



High Temperature Resistance
PC V0 material ensures high-temperature resistance and excellent flame-retardance.



Safety Certification
CE and UKCA certified. Safe performance is guaranteed.



Safe Disassembly
Separate the high and low voltage which you can disassemble the switch safely.



Figure 3: Exploded view and internal wiring components of the SONOFF M5 SwitchMan.

3.3 Device Pairing with eWeLink App

1. Download the eWeLink App from the Google Play Store or Apple App Store.
2. Register or log in to your eWeLink account.
3. Power on the SONOFF M5-3C-86 switch. The LED indicator will flash, indicating it's in pairing mode.
4. Open the eWeLink App, tap the "+" icon to add a device, and follow the on-screen instructions to connect the switch to your 2.4GHz Wi-Fi network.

One Phone, One Home

Through the eWeLink APP, you can manage devices at any time, don't worry about forgetting to turn off the electrical appliances when you go out.



Figure 4: Managing devices through the eWeLink App.

4. OPERATING INSTRUCTIONS

4.1 Local Control

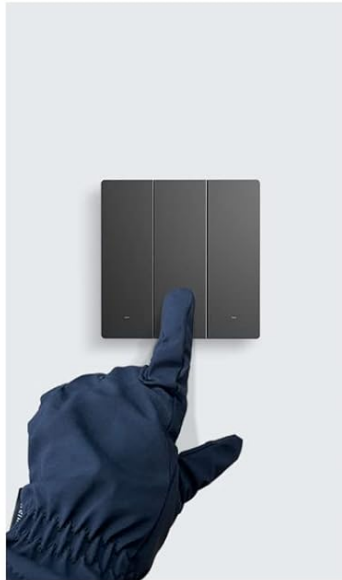
The SONOFF M5-3C-86 features physical momentary buttons. Simply press the desired button to toggle the connected light or appliance on/off. These buttons are responsive and can be operated even with gloves on.

Press and Go

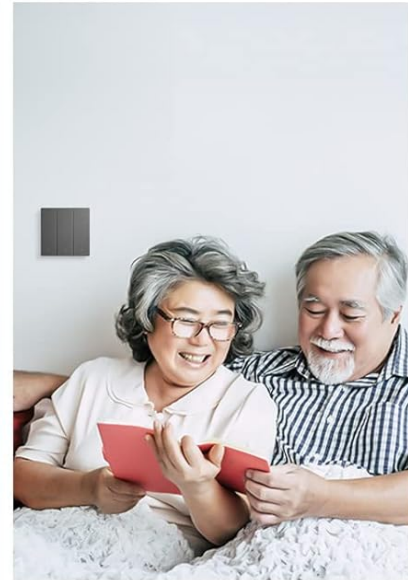
As a smart wall switch, M5 adopts physical buttons for local control. Just press the button, the lights will be turned on.



Quick-responsive physical buttons.



Can be touched with gloves on.



Anyone can easily use.

Figure 5: Demonstrating the ease of local control with physical buttons.

4.2 App Control

Use the eWeLink App to remotely control your switch from anywhere. The app allows you to:

- Turn devices on/off.
- Set schedules and timers for automated operation.
- Create smart scenes with other compatible devices.
- Share control with family members.
- Adjust the brightness of the LED indicator.

4.3 Voice Control

Integrate your SONOFF M5-3C-86 with voice assistants for hands-free control. Supported platforms include Amazon Alexa, Google Home, Alice, and Siri shortcuts. Follow the instructions within the eWeLink app to link your account with these services.

4.4 Smart Scene and Automation

Leverage the smart scene feature to automate your home. For example, you can set a schedule for the M5 to control lights, ensuring they turn on automatically at a specific time, such as when you wake up.

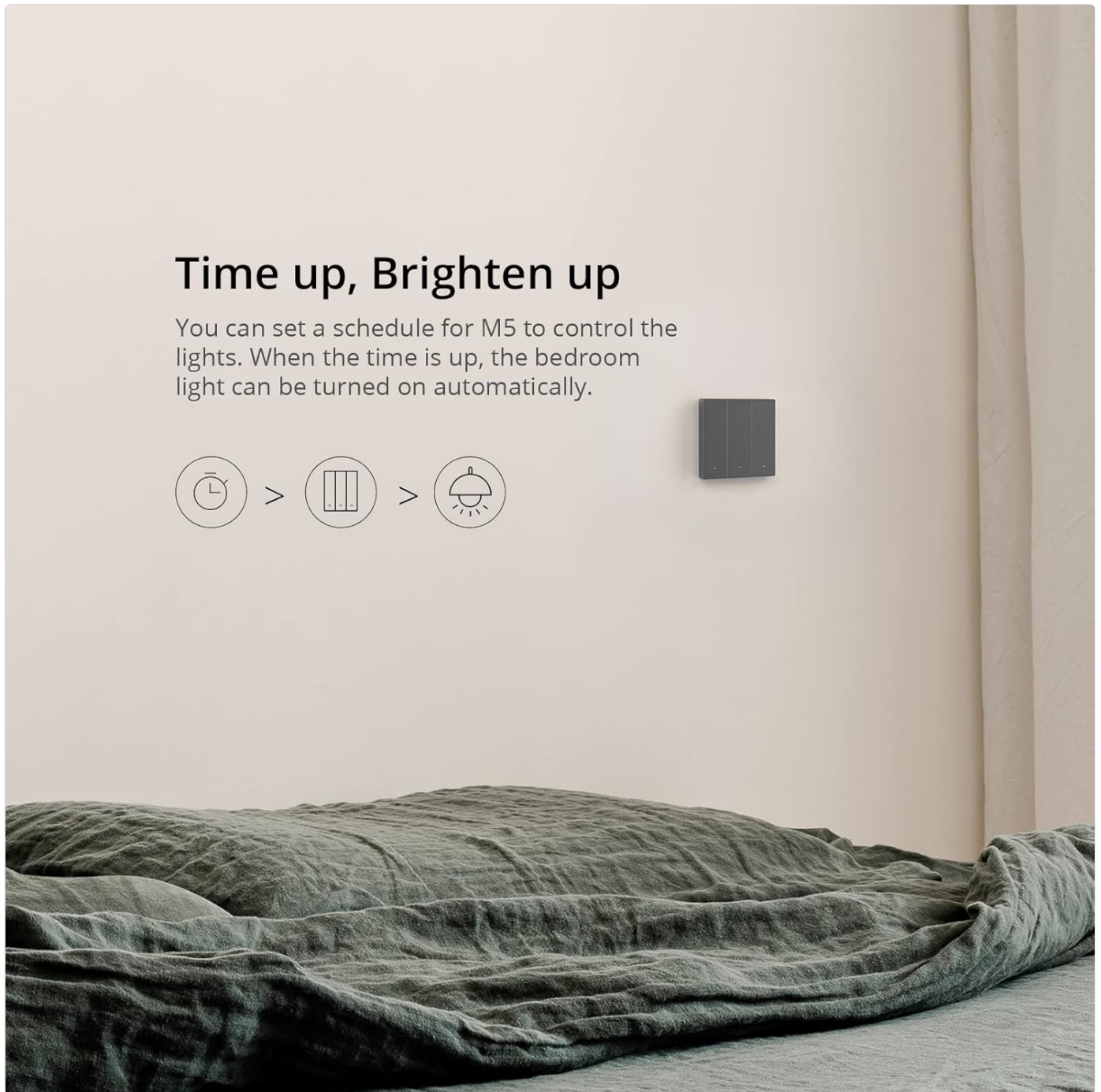


Figure 6: Example of scheduling lights with the SONOFF M5.

The M5 can also be used in conjunction with other SONOFF products like the NSPanel smart scene wall switch for a unified smart home experience.

Use with NSPanel

Operated on NSPanel smart scene wall switch to make you control the connected light or home appliances on a touch screen using a tap. It has the same color as NSPanel which provides a consistent decoration to match your home style.



Figure 7: SONOFF M5 integrated with NSPanel.

5. MAINTENANCE

- **Cleaning:** Use a soft, dry cloth to clean the surface of the switch. Do not use abrasive cleaners or solvents.
- **Firmware Updates:** Regularly check for firmware updates through the eWeLink App to ensure optimal performance and access to new features.
- **Power Cycle:** If the device becomes unresponsive, try turning off the power at the circuit breaker for a few minutes, then restore power.

6. TROUBLESHOOTING

Problem	Possible Cause	Solution
---------	----------------	----------

Problem	Possible Cause	Solution
Device not connecting to Wi-Fi.	Incorrect Wi-Fi password, 5GHz network, weak signal, or device too far from router.	Ensure correct 2.4GHz Wi-Fi password. Move device closer to router or use a Wi-Fi extender. Reset device and try pairing again.
Switch unresponsive.	No power, loose wiring, or device malfunction.	Check circuit breaker. Verify wiring connections. Power cycle the device. If issues persist, contact support.
Voice control not working.	Incorrect linking with voice assistant, or incorrect commands.	Ensure eWeLink account is correctly linked to Alexa/Google Home. Use precise voice commands as specified by the eWeLink app.
LED indicator not dimming.	Setting not applied correctly in app.	Verify LED brightness settings in the eWeLink app. Ensure device firmware is up to date.

7. SPECIFICATIONS

Attribute	Detail
Model Number	M5-3C-86
Brand	SONOFF
Product Dimensions	86 x 86 x 41.4 cm
Item Weight	156 g
Operation Mode	ON-OFF-ON
Current Rating	6 Amps
Operating Voltage	120 Volts
Contact Type	Normally Closed
Connector Type	Clamp
Switch Type	Push Button
Terminal	Screw
Material	Polycarbonate
Wireless Connectivity	2.4GHz Wi-Fi (IEEE 802.11 b/g/n)
Max Power	2200W
Certifications	CE, UKCA, CQC, SRRC

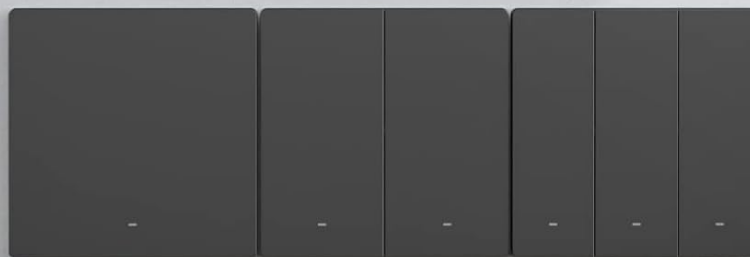
Choose What Your Need



M5-1C-80

M5-2C-80

M5-3C-80



M5-1C-86

M5-2C-86

M5-3C-86

*M5-80 can be installed on the mounting box using the Switch Frame.

Figure 8: Different models of SONOFF M5 switches available.

8. WARRANTY AND SUPPORT

SONOFF products are manufactured to high-quality standards. For warranty information, please refer to the documentation included with your purchase or visit the official SONOFF website.

- **Manufacturer:** SONOFF
- **Support Email:** support@itead.cc
- **Official Website:** sonoff.tech

For further assistance or technical support, please contact the SONOFF support team via the provided email or visit their official website for FAQs and resources.

