

EARMOR M20

EARMOR M20 Electronic Earbuds User Manual

Model: M20
Brand: EARMOR

1. INTRODUCTION

The EARMOR M20 Electronic Earbuds are advanced in-ear hearing protection devices designed for use in high-noise environments. They effectively reduce continuous noise and impulse noise, suppressing dangerous sounds exceeding 82 dB, while enhancing ambient sound perception and communication. These earbuds are suitable for various applications including shooting training, law enforcement, manufacturing, and construction.

2. SAFETY INFORMATION

- The M20 earbuds provide a Noise Reduction Rating (NRR) of 26dB. Ensure proper fit to achieve maximum noise reduction effectiveness.
- Do not use these earbuds in environments where noise levels exceed the product's specified protection capabilities.
- Always ensure the earbuds are functioning correctly before entering a noisy environment.

3. PACKAGE CONTENTS

Verify that all items are present in your package:

- EARMOR M20 Electronic Earbuds (Left and Right)
- Portable Charging Case
- Silicone Retention Cord
- Earpieces Cover (various sizes)
- Eartips (various sizes)
- USB Charging Cable

4. SETUP

4.1 Initial Charging

Before first use, fully charge both the earbuds and the portable charging case. The charging case features an internal battery for convenient charging on the go. A low-battery reminder will alert you when charging is required.



Image: EARMOR M20 Earbuds in their charging case, with one earbud removed, illustrating the charging setup.

4.2 Fitting the Earbuds

Select the eartips and earpieces cover that provide the most comfortable and secure fit for your ears. An ergonomic design ensures optimal noise reduction. Attach the silicone retention cord to connect the two earbuds, preventing accidental loss.

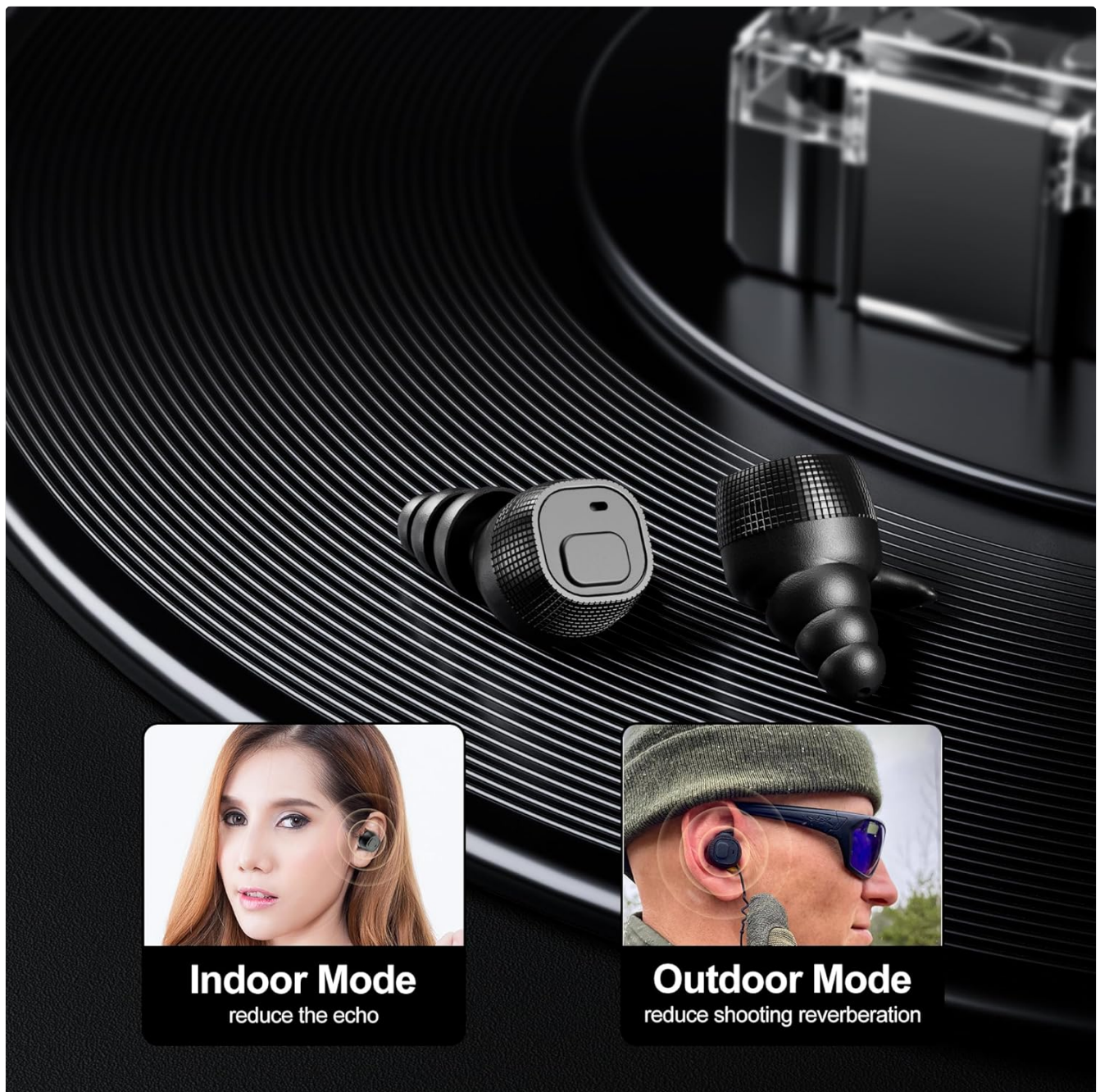


Image: A visual representation of the M20 earbuds, highlighting the 'Indoor Mode' for reducing echo and 'Outdoor Mode' for reducing shooting reverberation.

5. OPERATING INSTRUCTIONS

5.1 Power On/Off

To power on the earbuds, press and hold the button on each earbud for approximately two seconds. The earbuds will automatically power off after 2 hours of inactivity or when placed back into their charging case.

5.2 Operating Modes

The M20 earbuds feature two distinct modes to optimize sound performance in different environments:

- **Indoor Mode:** Designed to reduce echo in enclosed spaces. Activate this mode by holding the button for two seconds until a low beep is heard.
- **Outdoor Mode:** Designed to reduce shooting reverberation in open environments. Activate this mode by holding the

button again for a longer beep.

5.3 Noise Reduction and Ambient Sound

The earbuds actively suppress harmful noises above 82 dB, protecting your hearing. Simultaneously, they allow ambient sounds below this threshold to pass through, enabling improved situational awareness and clear communication in noisy settings.



Image: A graphic illustrating the sound wave reduction provided by the EARMOR M20 earbuds, showing a 'Before' (high amplitude) and 'After' (low amplitude) comparison.

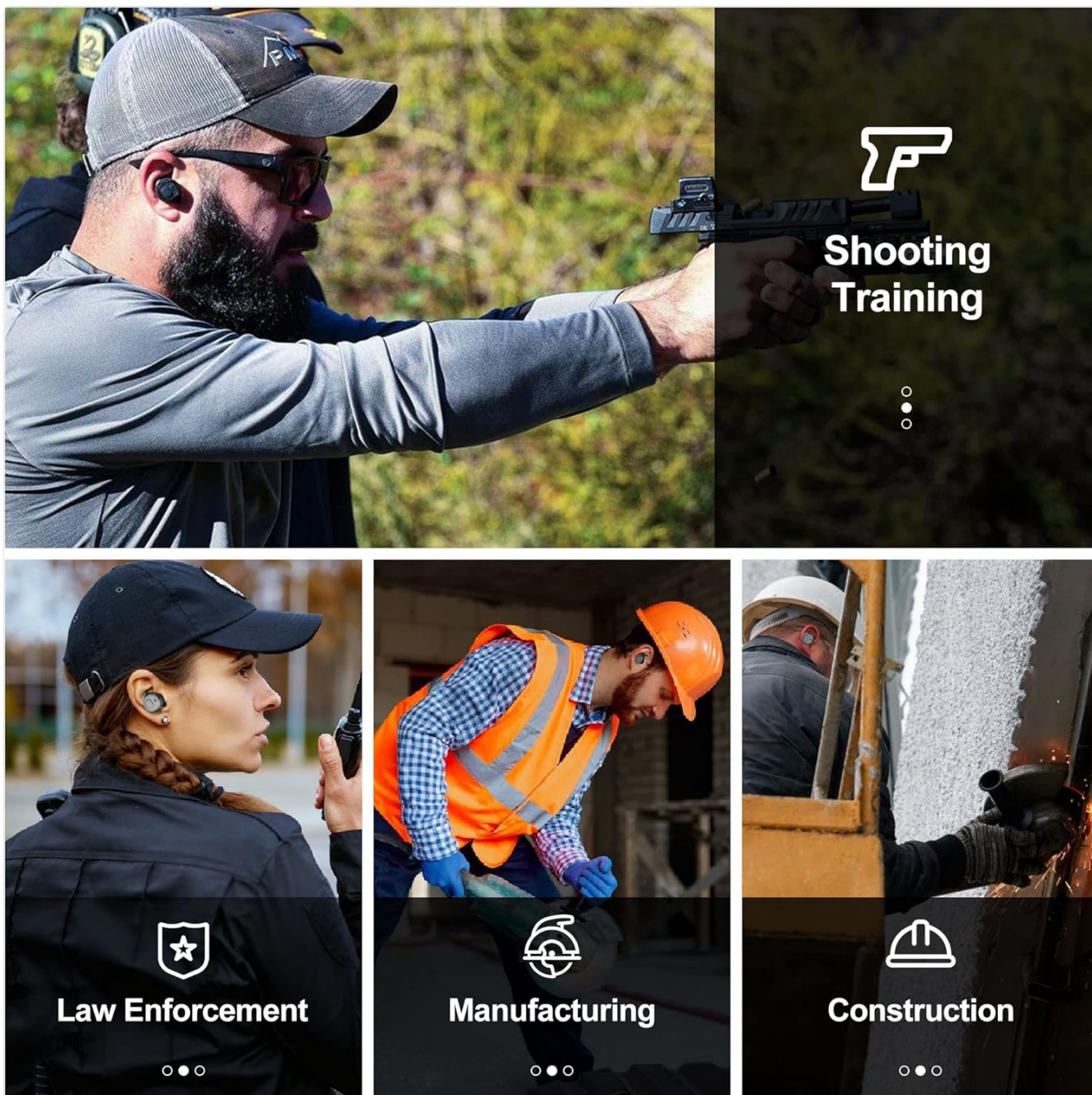


Image: A collage demonstrating the multi-purpose application of the earbuds, including shooting training, law enforcement, manufacturing, and construction.

6. MAINTENANCE

- **Cleaning:** Regularly clean the eartips and earpieces cover with a soft, damp cloth to maintain hygiene and optimal acoustic performance. Ensure the charging contacts on both the earbuds and the case are clean and dry.
- **Storage:** Always store the earbuds in their charging case when not in use. This protects them from damage and ensures they remain charged for your next use.

7. TROUBLESHOOTING

7.1 Earbud Not Charging or Turning On

- Ensure the earbuds are correctly seated in their charging slots within the case.
- Verify that the charging case itself has sufficient battery charge.
- Clean the charging contacts on both the earbuds and inside the case with a dry cotton swab to remove any debris or residue.
- Try resetting the earbuds by placing both back into the case, closing the lid for a few seconds, and then reopening it.

7.2 Insufficient Noise Reduction

- Confirm that you are using the correct size eartips and earpieces cover for a tight and comfortable seal in your ear canal. An improper fit can significantly reduce noise reduction effectiveness.
- Ensure the correct operating mode (Indoor or Outdoor) is selected for your specific environment.
- For extremely loud environments or larger caliber firearms, supplementary hearing protection (e.g., earmuffs over the earbuds) may be necessary, though the M20 earbuds are designed to be highly effective on their own.

7.3 Sound Quality Issues

- Check for any debris or earwax obstructing the earbud openings. Clean carefully if necessary.
- Ensure the earbuds are fully charged, as low battery can affect sound performance.






8. SPECIFICATIONS

Model	M20
Noise Reduction Rating (NRR)	26dB
Battery Type	1 Lithium Ion (included)
Battery Life	Up to 8 hours
Material	ABS
Manufacturer	EARMOR

9. WARRANTY AND SUPPORT

The EARMOR M20 Electronic Earbuds are backed by a 90-day no-risk money-back guarantee and a limited lifetime warranty. If you encounter any issues or require support, please contact EARMOR customer service for assistance. We are committed to ensuring your satisfaction.

Related Documents - M20

 <p>EARMOR® M20/M20T PRO ELECTRONIC HEARING PROTECTION (EHP)</p>	<p>EARMOR M20/M20T PRO Electronic Hearing Protection Earbuds User Manual</p> <p>Comprehensive user manual for EARMOR M20/M20T PRO electronic hearing protection earbuds, covering assembly, installation, operation, charging, troubleshooting, specifications, safety, and warranty information.</p>
 <p>EARMOR® M20T WIRELESS BT5.3 EARBUDS HEARING PROTECTION (EHP)</p>	<p>EARMOR M20T Wireless BT5.3 Earbuds Hearing Protection User Manual</p> <p>User manual for EARMOR M20T Wireless BT5.3 earbuds, detailing safety, features, operation, installation, and warranty. Provides guidance on using these electronic hearing protectors for noise reduction and communication in harsh environments.</p>
 <p>EARMOR® M300T ELECTRONIC HEARING PROTECTION (EHP)</p>	<p>EARMOR M300T Electronic Hearing Protector with Bluetooth 5.3 - User Manual & Specifications</p> <p>Comprehensive user manual for the EARMOR M300T Electronic Hearing Protector. Learn about its features, safety guidelines, operation instructions for ambient listening and Bluetooth connectivity, battery replacement, specifications, approvals, FCC compliance, and warranty. Protect your hearing effectively with advanced noise-canceling technology.</p>
 <p>EARMOR® M20T WIRELESS BT5.3 EARBUDS HEARING PROTECTION (EHP)</p>	<p>EARMOR M20T Wireless BT5.3 Earbuds Hearing Protection User Manual</p> <p>User manual for EARMOR M20T Wireless BT5.3 Earbuds Hearing Protection, detailing safety information, features, specifications, operating instructions, installation, and warranty.</p>
 <p>EARMOR® M33 Tactical Communication & Hearing Protection (EHP)</p>	<p>EARMOR M33 MilPro Headset User Manual: Tactical Communication & Hearing Protection</p> <p>Comprehensive user manual for the EARMOR M33 MilPro Headset, detailing its features, operation, safety guidelines, installation, and specifications for tactical communication and hearing protection.</p>
<p>M20 User Manual for</p>	<p>M20 E-bike Display User Manual</p> <p>This user manual provides detailed instructions for operating and customizing the M20 e-bike display, including function overviews, general operation, settings, and error code definitions.</p>