

[Manuals.plus](#) /

› [Gammeefy](#) /

› Gammeefy Switch Controller User Manual

## Gammeefy Gammeefy Switch Controller

# Gammeefy Switch Controller User Manual

## INTRODUCTION

Welcome to the user manual for your new Gammeefy Switch Controller. This guide provides detailed instructions for setting up, operating, and maintaining your controller, ensuring an optimal gaming experience on your Nintendo Switch or Switch OLED console. Please read this manual thoroughly before use.



Image: The Gammeefy Switch Controller securely attached to a Nintendo Switch console, actively displaying a racing game. This image illustrates the controller's integrated design with the console.

## PRODUCT OVERVIEW

The Gammeefy Switch Controller is designed to enhance your handheld gaming experience with advanced features and ergonomic comfort.

### Hall Effect Joysticks

Equipped with **Hall Sense electromagnetic technology**, the joysticks offer precise control and are designed to eliminate joystick drift permanently. This technology provides a longer lifespan compared to traditional joysticks.

# Updated Hall Effect Joystick

With electromagnetic induction technology. No Dead Zone and No carbon film loss, never have to worry about joystick drift !



No dead zone  
& No Drift



Lower Latency  
More Accurate



Image: A detailed diagram showcasing the internal components of a Hall Effect joystick, emphasizing its electromagnetic induction technology for enhanced precision and durability.

## Ergonomic Design

The controller features a full-size grip for comfortable handling during extended gaming sessions. Larger A, B, X, Y buttons and a D-pad provide ample operating space and improved tactile feedback.

## ERGONOMIC DESIGN

Enjoy the full-size controller experience in handheld mode with this switch controller



Image: A hand holding the Gammeefy Switch Controller, illustrating the comfortable and ergonomic design of its full-size grips.

### Dual Vibration & 6-Axis Gyro Sensor

Experience immersive gameplay with dual vibration motors that provide realistic feedback. The integrated 6-axis gyroscope offers precise motion control for compatible games.



Image: A split image demonstrating the controller's dual vibration motors through a character's action and the 6-axis gyro sensor's motion control in a racing game.

## Customizable Turbo Function

The controller supports both auto and manual turbo functions, allowing you to set rapid-fire speeds at 5, 12, or 20 shots per second for various buttons (A, B, X, Y, L1, L2, R1, R2).



Image: The Gammeefy controller displaying an on-screen overlay for the Turbo function, showing selectable speeds of 5, 12, and 20 shots per second.

## Screenshot and Video Recording

Easily capture screenshots and record video clips of your gameplay moments to share with others.

# Screenshot and Video Recording Function

Share your game videos or screenshots on social apps



Image: The controller with its dedicated screenshot and video recording button highlighted, surrounded by examples of captured game content and social media sharing options.

## SETUP GUIDE

### Compatibility and Installation

The Gammeefy Switch Controller is compatible with both the Nintendo Switch and Nintendo Switch OLED models. To install, slide your console into the controller's central slot. Note the buckle position for proper fit:

- For **Switch OLED**: Ensure the buckle is in the 'Up' position.
- For standard **Switch**: Ensure the buckle is in the 'Down' position.

# COMPATIBLE WITH SWITCH/OLED

Please note the buckle place when you plug in your console  
(Buckle Up - OLED, Buckle down - Switch)



Image: A visual guide demonstrating the correct buckle adjustments for securely fitting both Nintendo Switch and Switch OLED consoles into the controller.

## Wired Connection Activation

For optimal performance and zero-latency gaming, activate the "Pro Controller Wired Communication" mode on your Nintendo Switch console. This bypasses Bluetooth interference and ensures a direct connection.

1. From the HOME Menu, select **System Settings**.
2. Scroll down the left-hand menu and select **Controllers and Sensors**.
3. Select **Pro Controller Wired Communication** to turn it **On**.

# WIRED CONNECTION, NO LATENCY

You need to turn on the wired connection in advance!

1. System Setting
2. Controllers and Sensors
3. Turn on "Pro Controller Wired Communication"

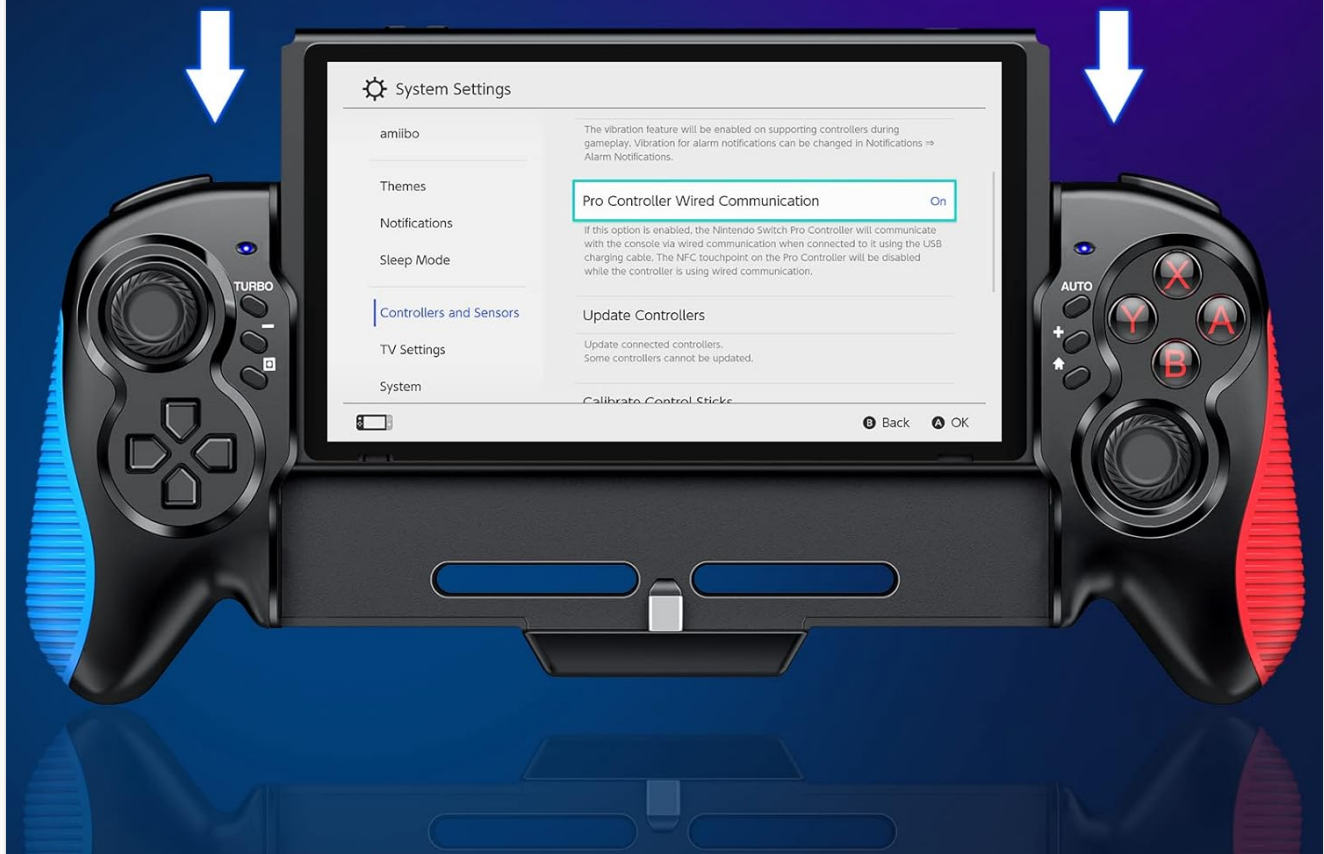


Image: A screenshot of the Nintendo Switch System Settings menu, highlighting the 'Pro Controller Wired Communication' option set to 'On' for wired controller functionality.

## OPERATING INSTRUCTIONS

### Basic Operation

Once your console is securely attached and wired communication is enabled, the controller will automatically be recognized. Simply power on your Nintendo Switch console to begin playing.

### Using the Turbo Function

To activate the Turbo function for a specific button:

1. Press and hold the **Turbo** button.
2. While holding Turbo, press the desired action button (A, B, X, Y, L1, L2, R1, R2) once to set it to manual turbo.
3. Press the action button again (while holding Turbo) to cycle through turbo speeds (5/12/20 shots per second) or to set it to auto turbo.

4. Release the Turbo button to confirm your setting.

## Capturing Screenshots and Videos

Use the dedicated screenshot/video recording button (typically located near the 'minus' button on the left side) to capture your gameplay. A short press takes a screenshot, while a long press records a video clip.

## MAINTENANCE

Proper maintenance ensures the longevity and performance of your Gammefy Switch Controller.

- **Cleaning:** Use a soft, dry cloth to wipe down the controller. For stubborn dirt, a slightly damp cloth can be used, but ensure no moisture enters the ports or buttons. Avoid harsh chemicals or abrasive materials.
- **Storage:** Store the controller in a cool, dry place away from direct sunlight and extreme temperatures. When not in use, detach it from the console if preferred, or keep it securely attached.
- **Handling:** Avoid dropping the controller or subjecting it to strong impacts, as this can damage internal components.

## TROUBLESHOOTING

### Common Issues and Solutions

- **Controller Not Connecting:**  
Ensure your Nintendo Switch console is powered on. Verify that "Pro Controller Wired Communication" is enabled in the console's System Settings (refer to the Setup Guide). Re-seat the console firmly into the controller.
- **Joystick Drift:**  
The Gammefy controller utilizes Hall Effect joysticks, which are designed to prevent drift. If you experience any joystick inaccuracies, please contact customer support for assistance.
- **Rapid Console Battery Drain:**  
This controller is wired and does not contain its own battery; it draws power directly from the Nintendo Switch console. For extended gaming sessions, it is recommended to connect your Nintendo Switch console to its official power adapter via the USB-C port.
- **No Vibration Feedback:**  
Check the in-game settings of the title you are playing to ensure that vibration is enabled. Also, verify that the console's system settings allow for controller vibration.
- **Buttons Unresponsive:**  
Ensure the console is securely seated in the controller and that the wired connection is stable. If the issue persists, try restarting your Nintendo Switch console.

## SPECIFICATIONS

ASIN	B09QPWT86S
Package Dimensions	12.09 x 5.16 x 2.52 inches

<b>Item Weight</b>	14.4 ounces
<b>Manufacturer</b>	Gammeefy
<b>Connectivity</b>	Wired (USB-C)
<b>Special Features</b>	Hall Effect Joysticks, Dual Vibration, 6-Axis Gyro, Turbo Function

## WARRANTY AND SUPPORT

### Warranty Information

Gammeefy products come with a **30-day free return policy** and a **one-year repair warranty** from the date of purchase. Please retain your proof of purchase for warranty claims.

### Technical Support

If you require technical assistance or have any questions regarding your Gammeefy Switch Controller, please contact our dedicated after-sales support team. We are committed to providing professional support and aim to respond to inquiries within 24 hours on working days.

For support, please visit the official Gammeefy store on Amazon or refer to the contact information provided with your product packaging.