

[Manuals.plus](#) /

> [Odoland](#) /

> Odoland Folding Campfire Grill Instruction Manual for Model OD0362

## Odoland OD0362

# Odoland Folding Campfire Grill Instruction Manual

Model: OD0362

## INTRODUCTION

---

The Odoland Folding Campfire Grill is a versatile and portable cooking solution designed for outdoor enthusiasts. Constructed from durable 304 stainless steel, it functions both as a campfire grill grate for cooking and as a compact fire pit for warmth. Its foldable design ensures easy transport and storage, making it an ideal companion for camping, hiking, picnics, and other outdoor activities.

## 2 WAYS OF USAGE



Image: The Odoland Folding Campfire Grill demonstrating its dual functionality as a campfire grill and a fire pit.

### WHAT'S IN THE BOX

---

Your Odoland Folding Campfire Grill package includes the following components:

- 1 x Camping Grill (main frame and cooking grate)
- 1 x Carrying Bag
- Wood Burning Grill (internal grate for fuel)
- Ash Tray
- Stove Baffles (side panels forming the firebox)
- Supporting Legs (base frame)

## ALL-IN-ONE PORTABLE SIZE



14"x7.8" package size, convenient for outdoor camping and picnic.

Image: All components of the Odoland Folding Campfire Grill, including the carrying bag.

### SETUP INSTRUCTIONS

---

Follow these steps to assemble your Odoland Folding Campfire Grill:

1. **Unfold the Supporting Legs:** Take out the main frame (supporting legs) from the carrying bag and unfold it to form the base of the grill.
2. **Place the Stove Baffles:** Insert the stove baffles (side panels) onto the support legs. These form the main firebox.
3. **Insert the Ash Tray:** Place the ash tray at the bottom of the stove baffles. This collects ash and helps with airflow.
4. **Position the Wood Burning Grill:** Place the smaller wood burning grill grate over the ash tray. This is where your fuel (charcoal or wood) will rest.
5. **Add the Campfire Grill:** Finally, place the main campfire grill grate on top of the assembled fire pit structure. This is your cooking surface.

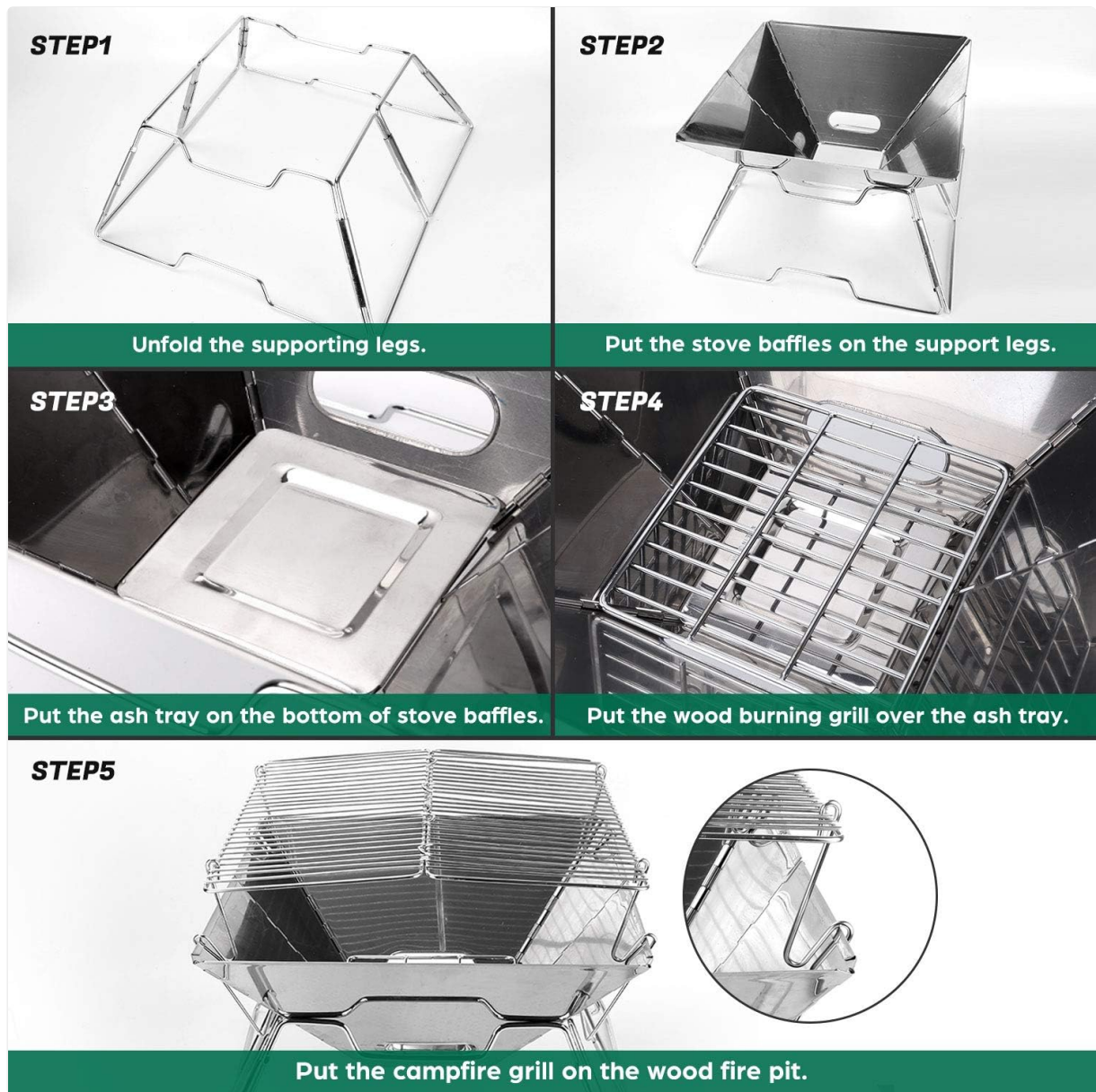


Image: Visual guide for assembling the grill in five easy steps.

## Assembly Video Guide

Your browser does not support the video tag.

Video: A detailed demonstration of how to assemble the Odoland Folding Campfire Grill and its various uses.

## OPERATING INSTRUCTIONS

The Odoland Folding Campfire Grill offers two primary modes of operation:

### 1. Campfire Grilling

- Ensure the grill is fully assembled with both the wood burning grill and the campfire grill in place.
- Place charcoal or small pieces of wood onto the lower wood burning grill.
- Ignite the fuel. Once the coals are hot or the wood is burning steadily, place your food directly on the top campfire grill grate for cooking.
- The funnel-shaped design and airflow holes promote efficient heat collection and effective charcoal burning.



Image: The grill in use, cooking various foods over a campfire.

## 2. Camping Fire Pit

- For use as a fire pit, you can remove the top campfire grill grate if desired, or leave it in place.
- Place larger logs or wood pieces directly onto the wood burning grill.
- Ignite the wood to create a contained campfire for warmth and ambiance.
- The design helps contain the fire and elevate it off the ground.



Image: The grill functioning as a fire pit with burning wood.

## MAINTENANCE

---

Proper maintenance ensures the longevity and performance of your grill:

- **Cleaning:** After each use, allow the grill to cool completely. The stainless steel components and non-stick grilling surface can be cleaned easily with warm soapy water and a non-abrasive brush or sponge. Remove any ash from the ash tray.
- **Storage:** Once clean and dry, disassemble the grill and store all components in the provided carrying bag. Store in a dry place to prevent rust and corrosion.
- **Inspection:** Periodically inspect all parts for any signs of wear or damage. Replace any damaged components to ensure safe operation.

## TROUBLESHOOTING

---

If you encounter any issues with your grill, consider the following:

- **Difficulty Assembling:** Refer to the "Setup Instructions" section and the assembly video. Ensure all parts are correctly oriented and securely fitted.

- **Poor Airflow/Fuel Not Burning Well:** Check that the ash tray is clear of excessive ash and that the airflow holes are not obstructed. Ensure you are using appropriate fuel (charcoal or dry wood) and not overfilling the firebox.
- **Unstable Grill:** Verify that the supporting legs are fully unfolded and placed on a flat, stable surface.

## SPECIFICATIONS

Feature	Detail
Brand	Odoland
Model Number	OD0362
Product Dimensions (Unfolded)	12.2"D x 12.2"W x 8.26"H (31cm x 31cm x 21cm)
Product Dimensions (Folded)	14"L x 7.8"W x 2"H (36cm x 20cm x 5cm)
Material Type	304 Stainless Steel
Fuel Type	Charcoal, Wood
Special Features	Durable, Portable, Non-Stick Surface, Foldable, Funnel-shaped design, Airflow holes, Ash tray
Item Weight	2 Kilograms
Required Assembly	Yes

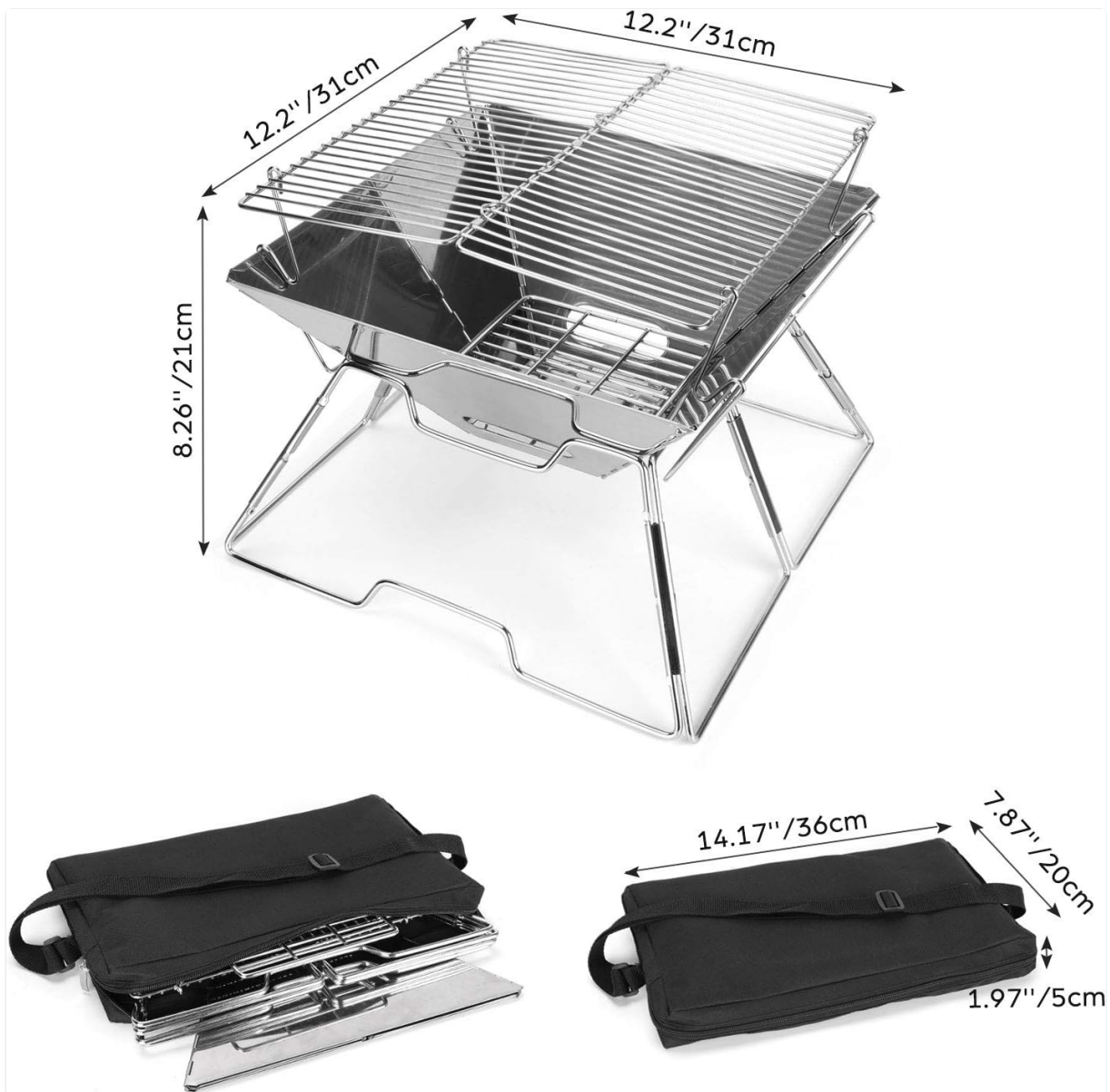


Image: Dimensions of the grill in both assembled and packed states.

## WARRANTY AND SUPPORT

---

Specific warranty information for the Odoland Folding Campfire Grill is not provided in the product details. For warranty claims, technical support, or any product-related inquiries, please contact Odoland customer service directly through their official website or the retailer where the product was purchased.