

MOCREO H1 Hub Kit

MOCREO H1 Hub Kit WiFi Thermometer Freezer Alarm User Manual

Remote Wireless Temperature Monitoring System

1. PRODUCT OVERVIEW

The MOCREO H1 Hub Kit is a comprehensive wireless temperature monitoring system designed to provide real-time temperature data and alerts for various environments. It helps protect valuable items by notifying you of significant temperature changes in your freezers, refrigerators, hot tubs, and more.



Image: MOCREO H1 Hub Kit showing the central hub, two wireless temperature sensors, and a smartphone displaying temperature readings from the companion app.

2. WHAT'S IN THE BOX

- WiFi Hub
- 2 Wireless Thermometers (Sensors)
- 2 Probe/Cable Clips
- Power Adapter
- Power Cable

After-sales Support



90-Day

100% Satisfaction
Guarantee

Money Back
and Free Return



1 Year

Warranty



24/7

Online Support 1-on-1

Image: Unboxed components of the MOCREO H1 Hub Kit, detailing the hub, sensors, cables, and accessories.

3. SETUP GUIDE

3.1 Powering the Hub

1. Connect the provided power cable to the MOCREO WiFi Hub.
2. Plug the power adapter into a standard electrical outlet. The hub will power on and indicate its status.

3.2 Installing the MOCREO Smart App

1. Download the "MOCREO Smart" application from your device's app store (available for iOS and Android).
2. Open the app and follow the on-screen instructions to create an account or log in.

3.3 Connecting Sensors and Initial Configuration

1. Within the MOCREO Smart App, follow the prompts to add your H1 Hub. Ensure your smartphone is connected to a 2.4GHz Wi-Fi network during this process.
2. Once the hub is connected, add your wireless temperature sensors (ST5). The app will guide you through pairing each sensor with the hub.
3. Customize alert thresholds (minimum and maximum temperatures) for each sensor within the app.

3.4 Sensor Placement

Each temperature sensor is equipped with adhesive backing for easy attachment to the exterior of your appliance or desired monitoring area. The probe cable is ultra-thin (1.3mm) to ensure refrigerator sealing is not compromised when the probe is placed inside. Use the provided probe/cable clips to manage the cable neatly.

1.3mm Ultra-Thin Flat Cable

Ensure Refrigerator Sealing

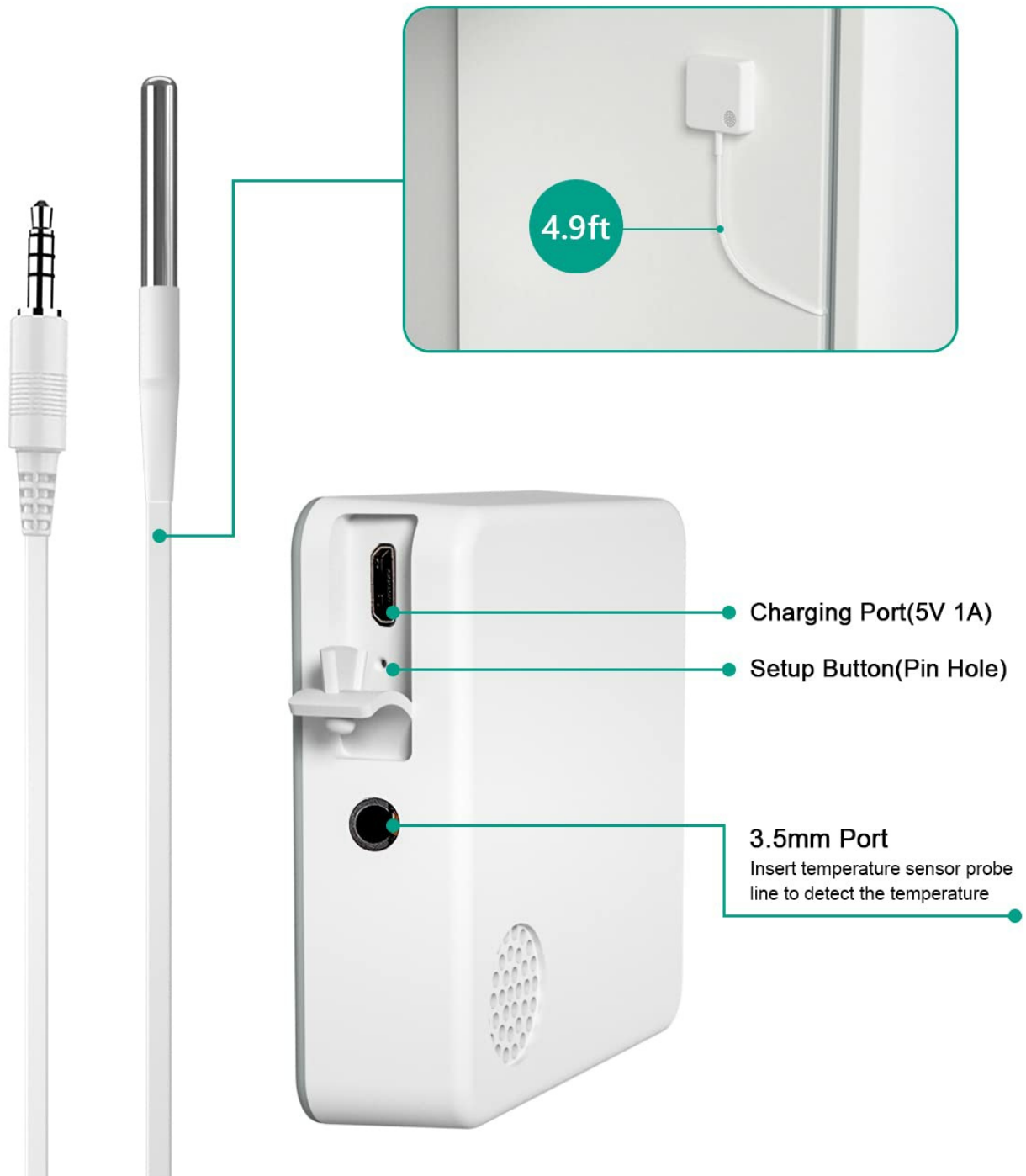


Image: Detail of the MOCREO sensor's ultra-thin flat cable, designed to pass through appliance door seals without affecting performance.

Video: An overview of the MOCREO ST5 WiFi Freezer Thermometer, demonstrating its components and basic setup.

4. OPERATING INSTRUCTIONS

4.1 24/7 Remote Monitoring

The MOCREO system continuously monitors temperatures and transmits data to the cloud. You can view real-time

temperature readings from anywhere using the MOCREO Smart App on your smartphone or tablet.

24/7 Real-Time Away Home Monitoring



Image: Illustration of 24/7 real-time remote monitoring capabilities, showing Wi-Fi connection, data export, instant alerts, and long battery life.

4.2 Instant Alert System

The system offers three optional instant alert methods to notify you of temperature deviations:


- **App Push Notifications:** Receive immediate alerts directly on your smartphone.
- **Email Alerts:** Notifications are sent to your registered email address.

- **Audible Alerts:** The H1 Hub emits a loud 80dB alarm.


Additional smart alerts include hub offline notifications (for power outages), low battery warnings, and anti-false alarm features to prevent unnecessary alerts when appliance doors are briefly opened.

MAX/MIN Threshold Setting


Remote Instant Alert



Hub Beeping



App Notification



Email Alerts

Temperature Exceeded Fri 15:30 AM
Sensor ID:0012b001dd9be87
Sensor Name:Freezer
The measured temperature is 36.00°F, wich is higher than the highest temperature of 32.00°F you...

Temperature Exceeded Fri 15:30 AM
Sensor ID:0012b001dd9be87
Sensor Name:Freezer
The measured temperature is 36.00°F, wich is higher than the highest temperature of 32.00°F you...

Temp Alerting ☒

Min Max

Min Max

-1°F 32°F

Delay before alert 0 minutes

Temperature Exceeded Fri 15:30 AM
Sensor ID:0012b001dd9be87
Sensor Name:Kitchen
The measured temperature is 78.8°F, wich is lower than the lowest temperature of 79.00°F you...

Temperature Exceeded Fri 15:30 AM
Sensor ID:0012b001dd9be87
Sensor Name:Kitchen
The measured temperature is 78.8°F, wich is lower than the lowest temperature of 79.00°F you...

Image: Visual representation of the MAX/MIN threshold setting and the three types of instant alerts: Hub Beeping, App Notification, and Email Alerts.

4.3 Data Logging and Export

The MOCREO system supports online viewing of clear temperature graphs and allows you to export historical data in CSV format for in-depth analysis and record-keeping. Data is stored for up to 2 years without any subscription

fees.

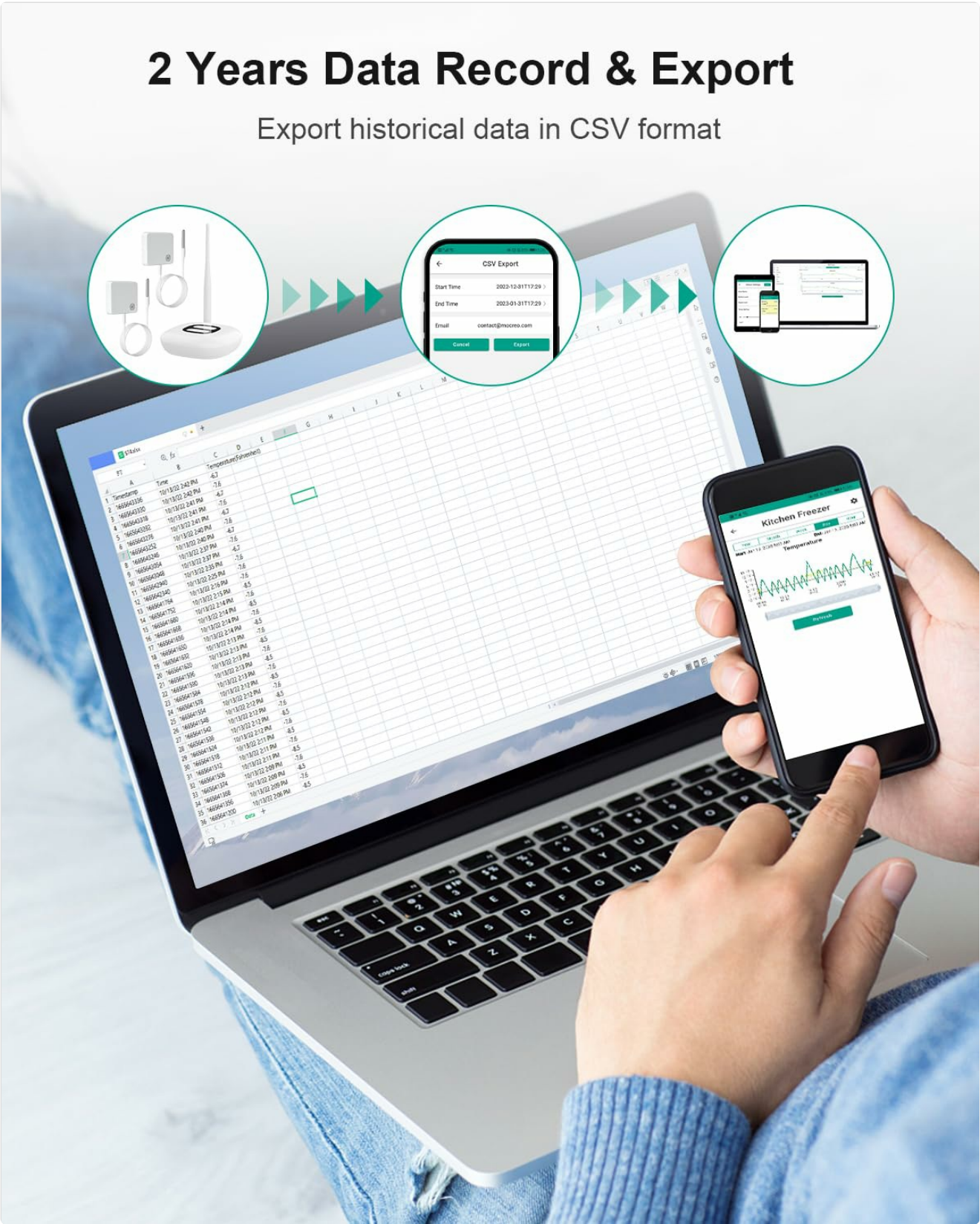


Image: Demonstrates the 2-year data record and export feature, showing temperature graphs on a laptop and smartphone.

5. KEY FEATURES

- **Industrial Grade Accuracy:** Remote refrigerator thermometer with a temperature range of -40°F to 257°F and an accuracy of $\pm 0.9^\circ\text{F}$, utilizing an industrial-grade sensor chip (USA-made DS18B20).
- **Scalable Coverage:** The H1 Hub connects to up to 30 MOCREO BLE sensors within a 131ft range, allowing for expanded monitoring.

- **2 Years Battery Life:** Sensors can last up to 2 years on a single charge and send a low battery alert when the battery level falls below 10%.
- **Smart Anti-False Alarm:** Prevents false alarms from being triggered when opening appliance doors for short periods.

Industrial-Grade Accuracy

USA-made DS18B20 Chip



Temp Range

-40°F~257°F



Temp Accuracy

±0.9°F

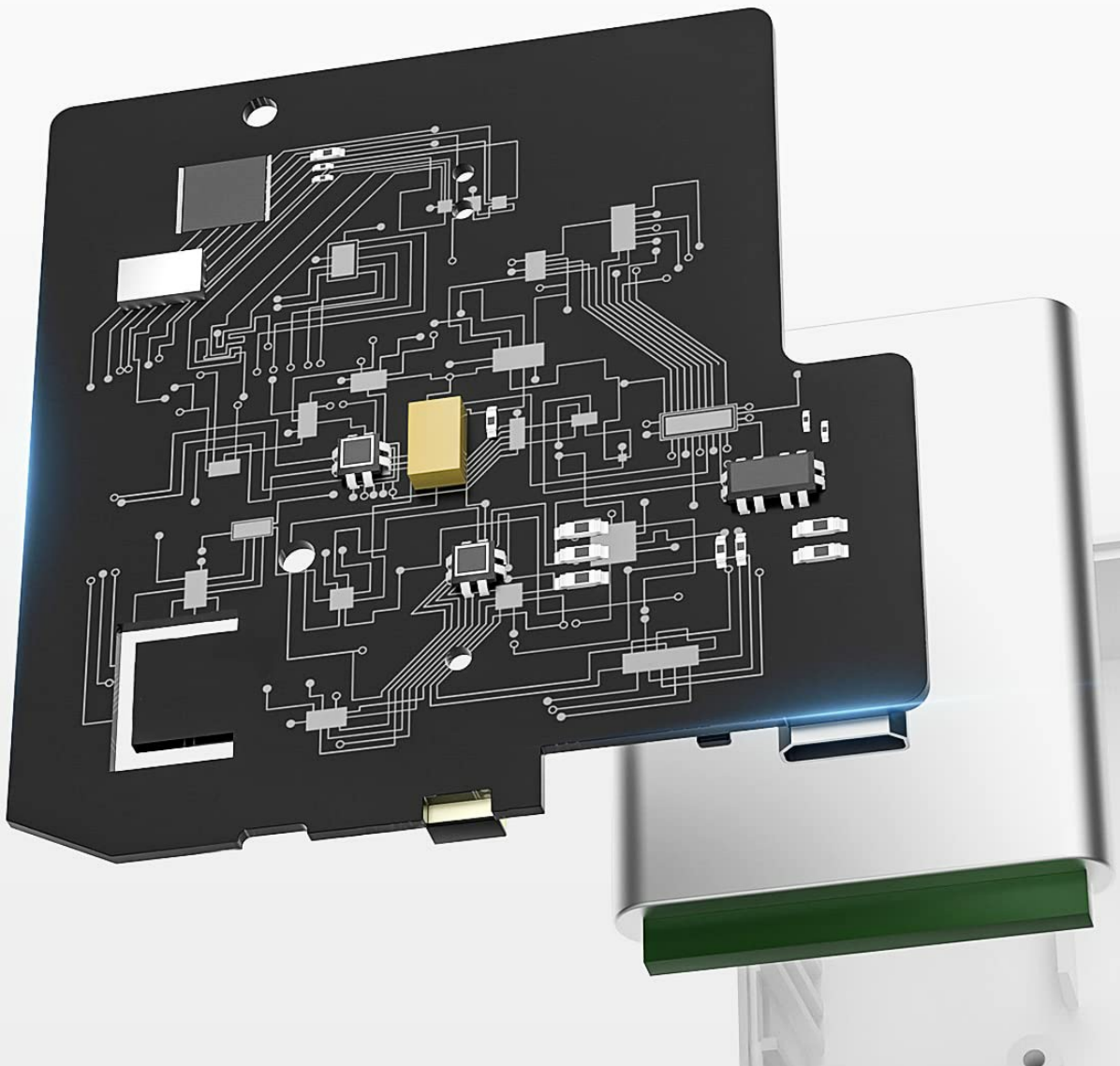


Image: Detailed view of the industrial-grade sensor chip and its specifications for temperature range and accuracy.

6. APPLICATIONS

The MOCREO H1 Hub Kit is suitable for a wide range of temperature monitoring needs:

6.1 Home Use

- Kitchen Freezers and Refrigerators
- Garage Refrigerators
- Hot Tubs
- Fish Tanks
- RVs
- Greenhouses and Nurseries

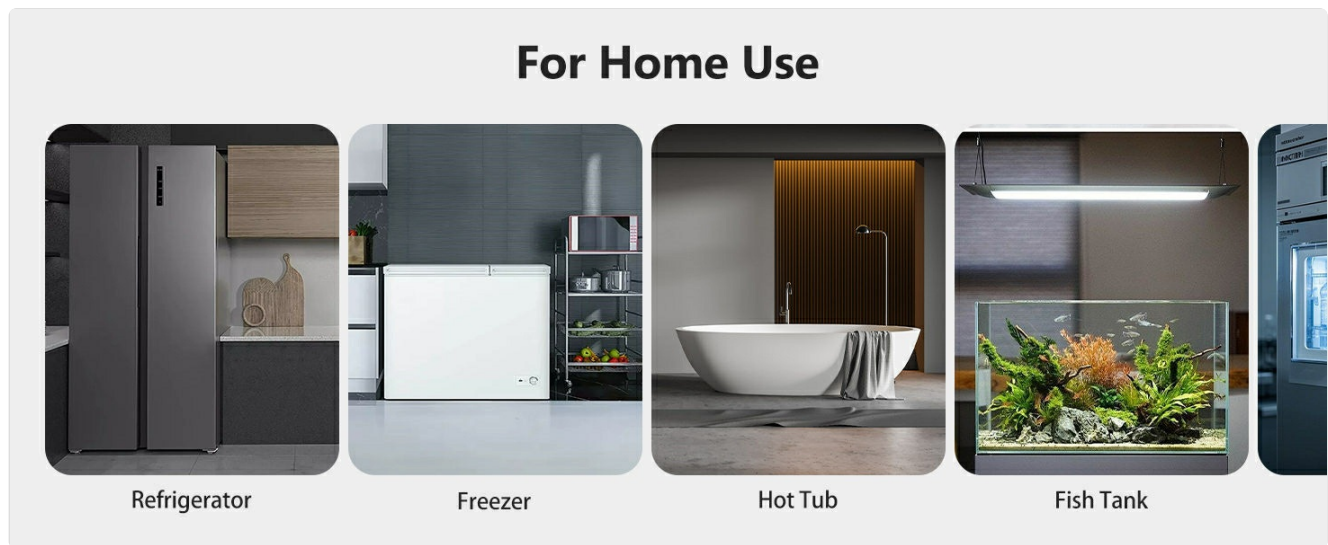


Image: Examples of home applications for the MOCREO temperature monitoring system.

6.2 Business Use

- Medical Refrigerators
- Walk-in Freezers
- Beverage Cabinets
- Ice Cream Cabinets
- Laboratory Applications

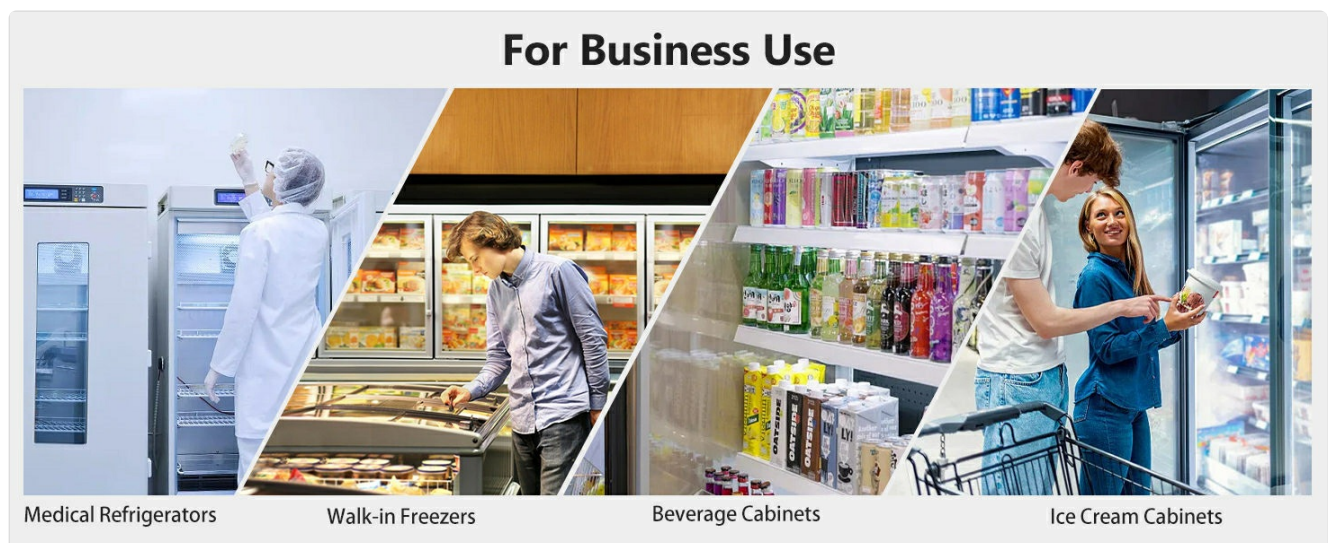


Image: Examples of business applications for the MOCREO temperature monitoring system.

7. MAINTENANCE

- **Battery Management:** The wireless sensors have a battery life of up to 2 years. The app will provide low battery alerts when the charge drops below 10%. Recharge sensors as needed using the provided power cable.
- **Cleaning:** To clean the devices, wipe them with a dry or slightly damp cloth.**Do Not Soak** any part of the device in water.
- **Sensor Re-attachment:** If the adhesive backing on the sensors loses its stickiness, replacement adhesive strips can be used to re-secure them.

8. TROUBLESHOOTING

- **No Temperature Readings:** Ensure the sensor probe is securely plugged into the wireless thermometer unit. Check the sensor's battery level in the app.
- **No Alerts Received:** Verify that alert settings (min/max temperatures, alert types) are correctly configured in the MOCREO Smart App. Check your phone's notification settings and email spam folder.
- **Hub Offline:** If the app indicates the hub is offline, check its power connection and ensure your home Wi-Fi network is operational and stable (2.4GHz only).
- **Inaccurate Readings:** Perform a data calibration through the app settings if you suspect readings are inaccurate. Ensure the sensor probe is not directly exposed to extreme conditions or airflow that might cause fluctuations.

9. SPECIFICATIONS

Feature	Detail
Item Model Number	H1 Hub Kit
Brand	MOCREO
Connectivity Technology	Wireless (2.4GHz Wi-Fi)
Temperature Range	-40°F to 257°F
Temperature Accuracy	±0.9°F
Sensor Chip	USA-made DS18B20
Battery Life	Up to 2 years (rechargeable Lithium Polymer)
Hub Sensor Capacity	Up to 30 MOCREO BLE sensors
Sensor Range (BLE)	131ft (without obstacles)
Alert Types	App Push, Email, 80dB Audible Alarm
Data Storage	2 Years (Cloud, no subscription)
Material	Acrylonitrile Butadiene Styrene (ABS)
Certifications	FCC

10. WARRANTY AND SUPPORT

- **90-Day Satisfaction Guarantee:** Enjoy a 100% satisfaction guarantee with money back and free returns.
- **1 Year Warranty:** The product is covered by a 1-year warranty.
- **24/7 Online Support:** MOCREO offers 24/7 one-on-one online customer support.



Image: Visual summary of MOCREO's after-sales support, including guarantees and warranty.

Related Documents - H1 Hub Kit

	<p>Mocreo ST5 Temperature Sensor User Manual</p> <p>User manual for the Mocreo ST5 Temperature Sensor, detailing setup, installation, operation, troubleshooting, and specifications. This wireless sensor monitors temperature in real-time with alerts via email and app notifications.</p>
	<p>MOCREO ST5-H2 Wireless Temperature Sensor Kit User Manual</p> <p>User manual for the MOCREO ST5-H2 Wireless Temperature Sensor Kit, detailing setup, specifications, features like email/app alerts, and troubleshooting for monitoring temperature in refrigerators, freezers, and other environments.</p>
	<p>MOCREO ST5 Temperature Sensor Kit User Manual and Setup Guide</p> <p>Comprehensive user manual for the MOCREO ST5 Temperature Sensors Kit, detailing setup, installation, app usage, troubleshooting, and warranty information for real-time temperature monitoring.</p>
	<p>Mocreo ST4 Temperature Sensor User Manual</p> <p>User manual for the Mocreo ST4 Temperature Sensor, providing detailed instructions on setup, installation, operation, troubleshooting, and specifications for remote temperature monitoring in various environments.</p>
	<p>MOCREO ST5-H5 Lite Temperature Sensors Kit User Manual</p> <p>User manual for the MOCREO ST5-H5 Lite Temperature Sensors Kit, providing detailed instructions on setup, installation, system operation, calibration, troubleshooting, and product specifications. Learn how to monitor temperature in various environments with this wireless sensor system.</p>
	<p>Mocreo LS1 Temperature Sensors User Manual</p> <p>User manual for the Mocreo LS1 wireless temperature sensor, detailing system operation, setup, specifications, precautions, FCC compliance, and warranty information for temperature monitoring in homes, laboratories, and storage facilities.</p>