

Manuals+

[Q & A](#) | [Deep Search](#) | [Upload](#)

Manuals.plus /

- › [ELERA](#) /
- › ELERA Pediatric Blood Pressure Cuff Instruction Manual

ELERA Small + Dark Gray (B09QM2SFP3)

ELERA Pediatric Blood Pressure Cuff Instruction Manual

Model: Small + Dark Gray (B09QM2SFP3)

INTRODUCTION

This manual provides detailed instructions for the proper use and maintenance of your ELERA Pediatric Blood Pressure Cuff. This cuff is designed as a replacement for automatic blood pressure monitors and is suitable for children, adolescents, and slim adults with an arm circumference of 5.9 to 9.5 inches (15-24 cm). Please read this manual thoroughly before use to ensure accurate readings and safe operation.

PRODUCT OVERVIEW

The ELERA Pediatric Blood Pressure Cuff is a high-quality replacement cuff featuring eco-friendly and comfortable materials. It comes with multiple connectors to ensure compatibility with a wide range of automatic blood pressure monitors.

Key Features:

- **Small Arm Fit:** Specifically designed for arm circumferences between 5.9-9.5 inches (15-24 cm), making it ideal for children, adolescents, and slim adults.
- **Universal Compatibility:** Includes 6 different connector sizes (0.16", 0.18", 0.2", 0.24", 0.28", 0.44") to fit most major blood pressure monitor brands.
- **Durable and Comfortable Material:** Constructed from non-toxic, odorless nylon fabric and TPU airbags for safety and comfort during use.
- **Easy to Use:** Designed for straightforward attachment and reliable performance.



Image: The ELERA Pediatric Blood Pressure Cuff shown with its gray tubing and a set of six blue connectors of varying sizes. The cuff itself has markings indicating arm placement and size range (15-24cm / 5.9-9.5 inches).

SETUP

1. Selecting the Correct Connector:

The cuff comes with six different connector sizes to ensure compatibility with your existing automatic blood pressure monitor. Identify the correct connector that securely fits into the air port of your blood pressure monitor.

Small Cuff

fits people with an arm circumference of 5.9-9.5 inches



Image: A close-up view of the six blue connectors, each labeled with its diameter (e.g., $\Phi 4\text{mm}/0.16\text{in}$, $\Phi 4.6\text{mm}/0.18\text{in}$, $\Phi 5\text{mm}/0.2\text{in}$, $\Phi 6\text{mm}/0.24\text{in}$, $\Phi 7\text{mm}/0.28\text{in}$, $\Phi 11.2\text{mm}/0.44\text{in}$). This image also shows how the largest connector can be replaced on the air tube.

2. Attaching the Cuff to Your Monitor:

1. Select the appropriate connector from the provided set.
2. Firmly insert the selected connector into the air tube of the blood pressure cuff.
3. Connect the other end of the air tube (with the attached connector) into the air port of your automatic blood pressure monitor. Ensure a snug and secure fit to prevent air leakage during measurement.

Important Note: This product is a replacement cuff only. The blood pressure monitor machine itself is not included.

Compatible with All Automatic Arm Blood Pressure Monitors

Fits connect hole size 0.15"/0.19"/0.23"/0.27"/0.44"



CANNOT be used with the following devices



Manual blood pressure monitor



Health monitoring equipment

Image: This image illustrates the cuff's compatibility with various automatic arm blood pressure monitors, showing several ELERA brand monitors. It also explicitly shows that the cuff is NOT compatible with manual blood pressure monitors or general health monitoring equipment.

OPERATING INSTRUCTIONS

For accurate blood pressure readings, follow these steps carefully:

- 1. Preparation:** Sit comfortably with your back supported and feet flat on the floor. Rest your arm on a flat surface at heart level. Avoid talking or moving during the measurement.
- 2. Cuff Placement (Step 1):** Keep the lower edge of the cuff approximately 0.8-1.2 inches (2-3 cm) from the inner elbow.
- 3. Cuff Alignment (Step 2):** Ensure the air tube is on the inside of your arm and aligned with your middle finger. The index arrow on the cuff should point towards your main arteries.

4. **Arm Level (Step 3):** The cuff should be placed on your arm at the same level as your heart.
5. **Cuff Fit (Step 4):** Wrap the cuff snugly around your arm. Ensure there is enough space to insert one finger between the cuff and your arm. Do not wrap it too tightly or too loosely.
6. **Measurement:** Once the cuff is correctly positioned, initiate the measurement process on your automatic blood pressure monitor according to its specific instructions.



HOW TO USE THE CUFF CORRECTLY ?

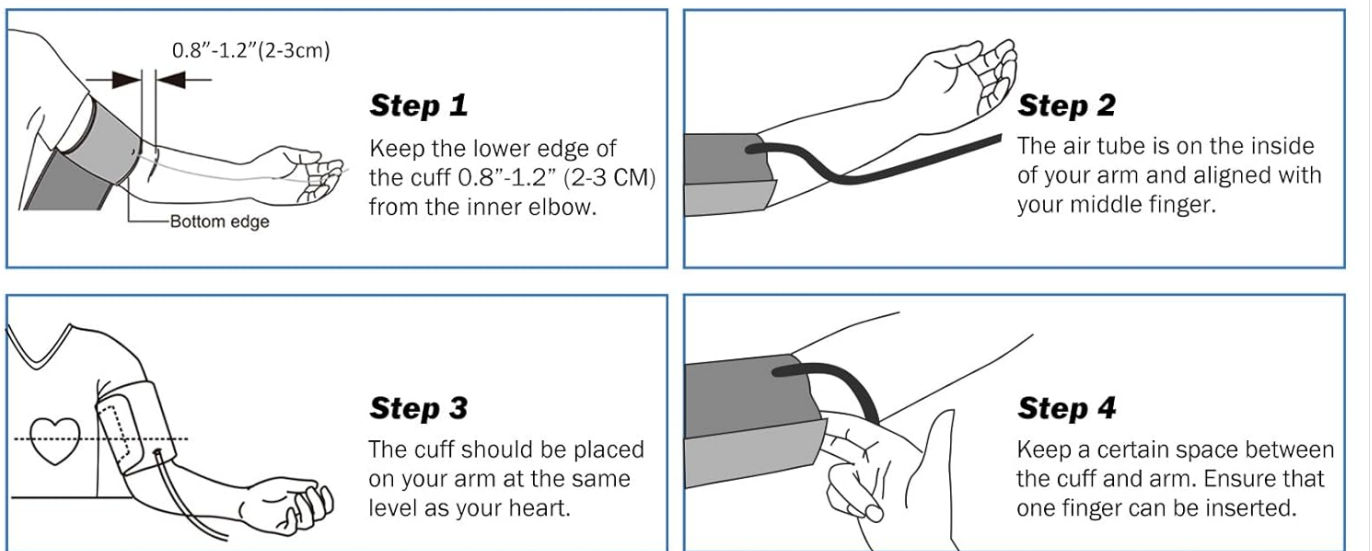


Image: A four-panel diagram illustrating the correct way to use the blood pressure cuff. Panel 1 shows keeping the cuff 0.8-1.2 inches from the inner elbow. Panel 2 shows the air tube aligned with the middle finger. Panel 3 shows the cuff at heart level. Panel 4 shows ensuring one finger can be inserted under the cuff.

Selecting the Correct Cuff Size:

Choosing the correct cuff size is crucial for accurate blood pressure measurement. This cuff is designed for small arm circumferences. Refer to the table below to determine if this cuff is suitable for your needs.

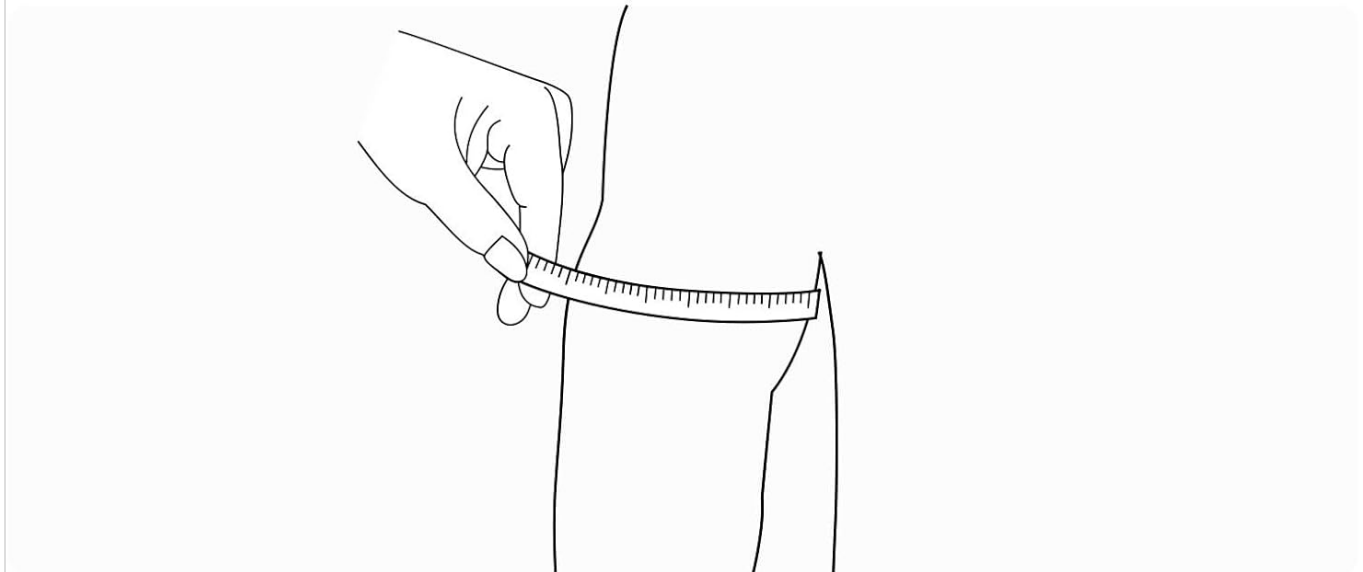
Upper-Arm Circumference	Suggested Cuff
13"-23"	Extra Large

Upper-Arm Circumference	Suggested Cuff
5.9"-12"	Small
4"-10"	Extra Small

Note: The ELERA Pediatric Blood Pressure Cuff is a "Small" cuff, suitable for 5.9"-9.5" arm circumference.

How to Select the Correct Cuff Size

Upper-Arm Circumference	Suggested Cuff
13"-23"	Extra Large
5.9"-12"	Small
4"-10"	Extra Small



Tips:

1. Choosing the correct size of cuffs ensures measurement accuracy.
2. Measure around the widest part of the upper arm, usually at the biceps muscle area.

Image: A line drawing illustrating how to measure the upper arm circumference, typically at the widest part of the biceps muscle area, to determine the correct cuff size.

MAINTENANCE

Cleaning the Cuff:

- Wipe the cuff surface with a soft, damp cloth.
- Use a mild detergent if necessary, but avoid harsh chemicals or abrasive cleaners.

- Do not immerse the cuff in water or any liquid.
- Allow the cuff to air dry completely before storing.

Storage:

- Store the cuff in a clean, dry place away from direct sunlight and extreme temperatures.
- Avoid folding the air tube sharply or placing heavy objects on the cuff, which could damage the tubing or airbag.



Image: A composite image highlighting the quality components of the cuff: "Medical Grade Tubing" (showing the gray air tube), "Premium Velcro" (showing the hook-and-loop fastener), and "Sturdy Nylon" (showing the fabric of the cuff).

TROUBLESHOOTING

If you encounter issues with your ELERA Pediatric Blood Pressure Cuff, consider the following common solutions:

- **Inaccurate Readings:**

- Ensure the correct cuff size is being used for the arm circumference.
- Verify the cuff is positioned correctly on the arm, at heart level, and aligned with the main arteries.

- Check that the air tube and connectors are securely attached to both the cuff and the monitor, with no leaks.
- Ensure the user is relaxed, not talking, and has rested for at least 5 minutes before measurement.

- **Cuff Not Inflating or Deflating Properly:**

- Confirm all connections are secure.
- Check the air tube for any kinks, blockages, or damage.
- Ensure your blood pressure monitor is functioning correctly and has sufficient battery power.

- **Cuff Feels Uncomfortable or Too Tight:**

- Re-check the arm circumference against the recommended size range for this cuff (5.9-9.5 inches).
- Ensure the cuff is not wrapped excessively tight; one finger should fit underneath.

If problems persist, refer to the troubleshooting section of your blood pressure monitor's manual or contact ELERA customer support.

SPECIFICATIONS

Feature	Detail
Product Name	Pediatric Blood Pressure Cuff
Brand	ELERA
Model	Small + Dark Gray (B09QM2SFP3)
Arm Circumference Range	5.9 - 9.5 inches (15 - 24 cm)
Included Connectors	6 sizes (0.16", 0.18", 0.2", 0.24", 0.28", 0.44")
Material	Non-toxic, odorless nylon fabric and TPU airbags
Product Dimensions	6.3"L x 5.1"W x 1.4"Th
Item Weight	0.11 Kilograms (3.88 ounces)
Compatibility	Most automatic arm blood pressure monitors

WARRANTY AND SUPPORT

ELERA offers a satisfaction guarantee for this product. If you have any quality concerns or issues, please contact ELERA customer support via Amazon. They aim to resolve problems within 24 hours.

For further assistance or to explore other ELERA products, please visit the official ELERA store:

Visit ELERA
Store

