

## EIoTCLUB DXY0117

# EIoTCLUB Data SIM Card User Manual

Model: DXY0117

## 1. PRODUCT OVERVIEW

---

The EIoTCLUB Data SIM Card provides high-speed data connectivity for various IoT devices, including security cameras, solar cameras, hunting trail cameras, 4G routers, and other unlocked devices. This SIM card offers nationwide network compatibility within the USA, utilizing both AT&T and T-Mobile cellular towers for optimal coverage.

The SIM card is provided as a triple-cut 3-in-1 kit, allowing it to be used as a Standard, Micro, or Nano SIM to fit a wide range of devices.



Image: EIoTCLUB Data SIM Card, designed for 360 days of data service.

## 2. SETUP AND ACTIVATION

---

The EIoTCLUB Data SIM Card is designed for straightforward plug-and-play functionality. No complex activation steps are required for initial use.

### 2.1. SIM Card Insertion

1. **Identify SIM Size:** Determine the correct SIM card size (Standard, Micro, or Nano) required by your device. The EIoTCLUB SIM kit is pre-cut to support all three sizes. Carefully detach the appropriate size from the larger card.
2. **Locate SIM Slot:** Refer to your device's manual to locate the SIM card slot.
3. **Insert SIM Card:** Gently insert the EIoTCLUB SIM card into the designated slot, ensuring correct orientation.

4. **Power On Device:** Power on your device. The SIM card should automatically connect to the network.

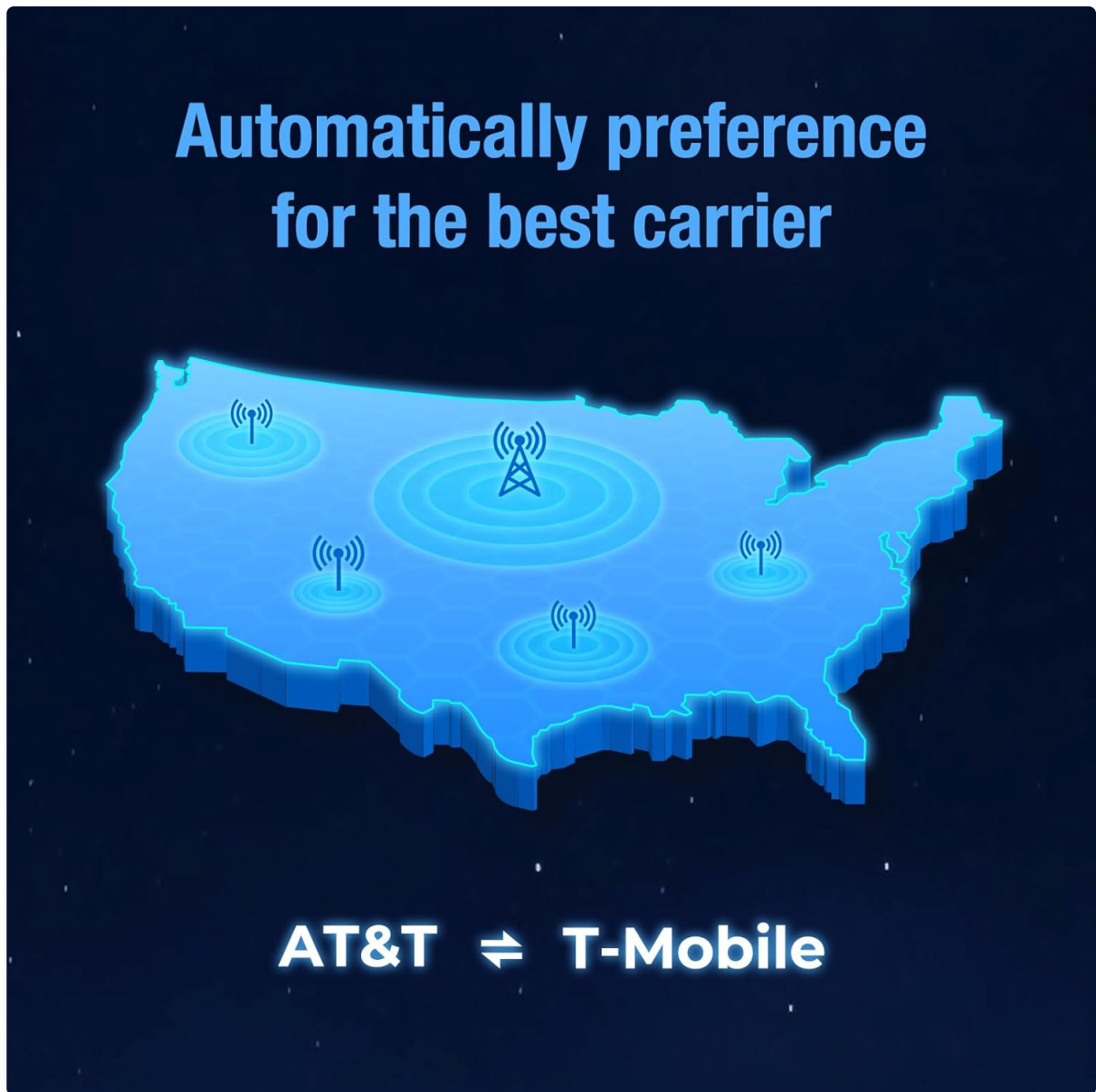


Image: Illustration of inserting the SIM card into a device. The SIM card is designed for plug-and-play operation.



Image: Easy Plug-and-Play Connectivity steps: Insert SIM, wait for network connection, and confirm successful connection via the EIoTCLUB app.

## 2.2. APN Settings (If Required)

By default, the device connects to the Belgium server. If you wish to switch to the U.S. server, you may need to manually update your device's Access Point Name (APN) settings.

- **U.S. Server APN:** america.bics

Consult your device's manual for instructions on how to access and modify APN settings.

### 2.3. Initial Setup with EIOTCLUB

To manage your SIM card and data plan, follow these steps:

1. **Visit:** Go to [sim.eiotclub.com/1](https://sim.eiotclub.com/1)
2. **Enter:** Input your SIM card ICCID number.
3. **Choose:** Select the data plan that suits your needs.

**Joining EIOTCLUB is Easy**

**1 Visit**  
Visit [sim.eiotclub.com/1](https://sim.eiotclub.com/1)

**2 Enter**  
Enter ICCID number

**3 Choose**  
Choose the plan you want

Image: Steps for joining EIOTCLUB and managing your SIM card via the web portal.

## 3. OPERATING INSTRUCTIONS

---

The EIOTCLUB Data SIM Card provides reliable data service for a variety of IoT applications.

### 3.1. Data Service Overview

- **Data Plan:** The standard plan offers 24GB of high-speed data for 360 days, whichever limit is reached first.
- **Network Coverage:** Service operates within the USA using local AT&T or T-Mobile cellular towers, ensuring nationwide compatibility.
- **Service Type:** This is a data-only SIM card. It does not support talk or text services and does not come with a phone number.



Image: The SIM card automatically selects the best available carrier (AT&T or T-Mobile) for optimal signal strength.



Image: Experience seamless connectivity with automatic network switching between AT&T and T-Mobile.

### 3.2. Compatible Devices

The EIoTCLUB Data SIM Card is compatible with a wide range of unlocked IoT devices, including but not limited to:

- Solar Cameras
- Trail and Game Cameras for Hunting
- 4G Routers
- 4G Security Cameras
- 4G PoC Radios
- Mobile Phones (unlocked, data-only use)

## We assist everything you need in 24/7

- Guide you step by step to use the SIM card
- Recommend the right data plan for your device
- Walk you through trouble shooting



Please go to the EIoTCLUB app  
or visit <https://sim.eiotclub.com/1>



Image: The 3-in-1 SIM kit supports multiple devices, including various types of cameras, routers, and trackers.

## 4. DATA MANAGEMENT AND REFILL

---

Managing your data usage and refilling your plan is designed to be simple and transparent.

### 4.1. Monitoring Usage

You can monitor your data usage and manage your service plans by logging into the EIoTCLUB portal or using the EIoTCLUB mobile application.

### 4.2. Refilling Your Plan

When your data limit is approached or your service duration is ending, you can easily refill your plan. During the refill process, you will be prompted to enter your correct email address and choose from different service plan levels.

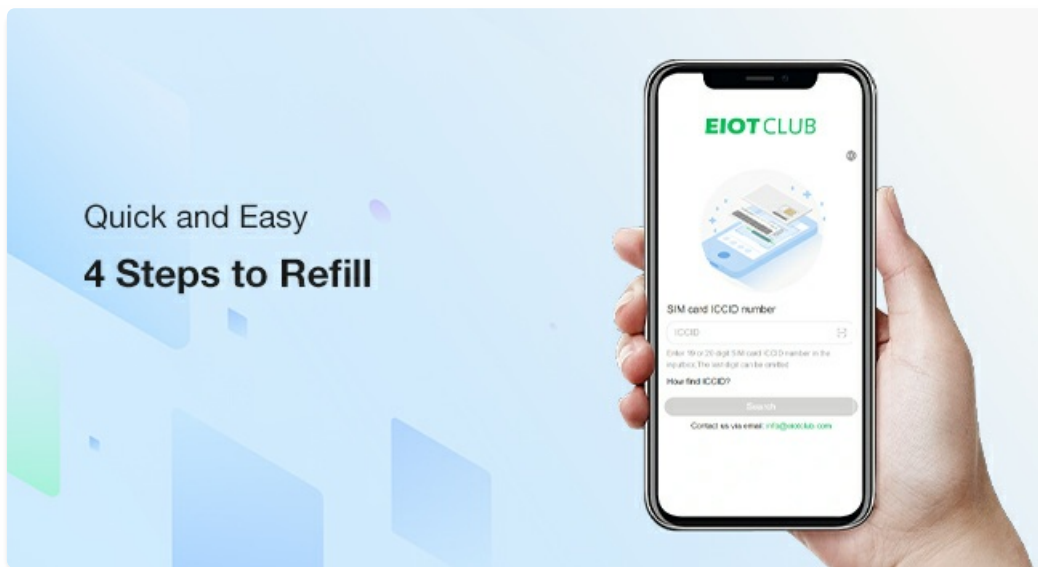


Image: Quick and easy 4 steps to refill your data plan via the EIoTCLUB app.

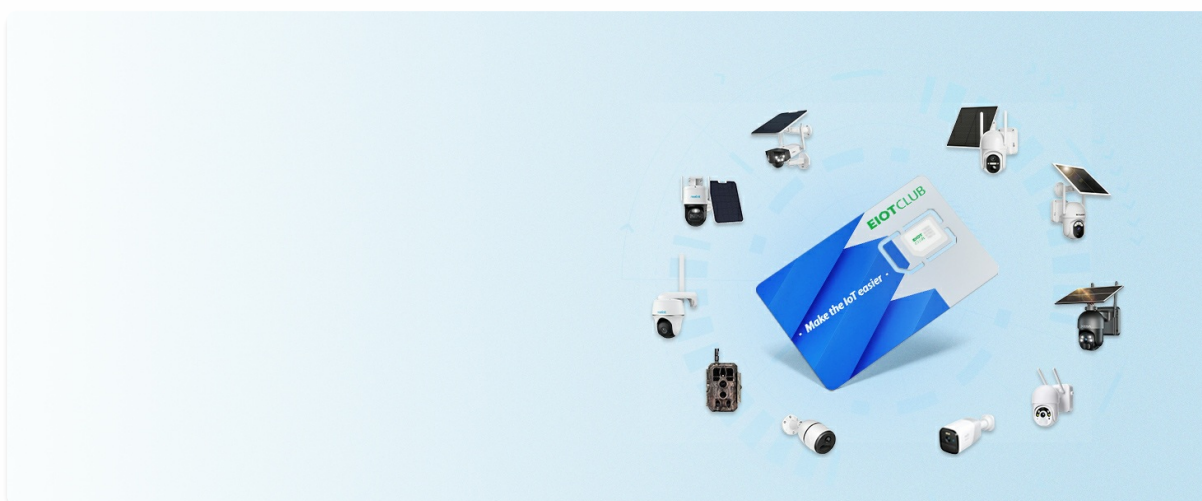


Image: Overview of available cellular data plans, showing options for days and data limits.

## 5. TROUBLESHOOTING

---

If you encounter issues with your EIoTCLUB Data SIM Card, consider the following troubleshooting steps:

- **Check SIM Insertion:** Ensure the SIM card is correctly inserted into your device's SIM slot and that the correct size (Standard, Micro, or Nano) is used.
- **Verify Device Compatibility:** Confirm that your device is unlocked and compatible with 4G LTE networks in the USA.
- **Network Band Frequency:** For routers, portable Wi-Fi, and hotspot devices, verify that the device supports the network band frequencies used in the USA. Note that B1/B3 bands are generally not supported in the US network.
- **APN Settings:** If experiencing connectivity issues, especially with server preference, ensure your APN is set to america.bics for U.S. server access.
- **Device Restart:** Try restarting your device after inserting the SIM card or changing settings.

- **Signal Strength:** Ensure your device is in an area with adequate cellular signal coverage.

## 5.1. Contacting Support

For further assistance, EIoTCLUB provides professional online customer support. When contacting support, please provide your SIM card number (ICCID) to help expedite the resolution process.

# Support Multiple Devices

3 in 1 SIM kit  
to fit any devices

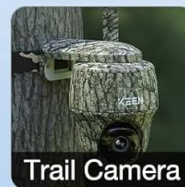
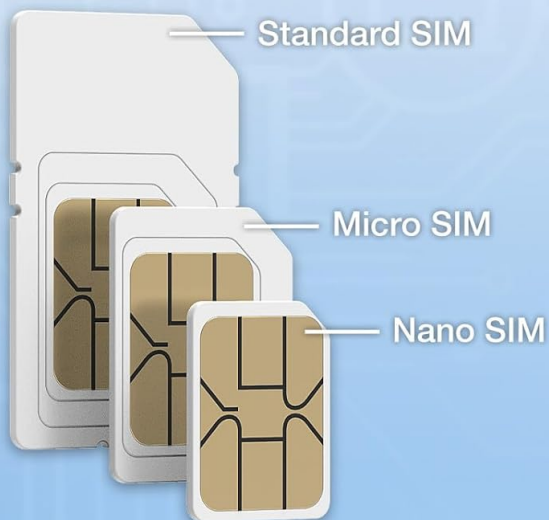


Image: EIoTCLUB offers 24/7 online support to guide users and assist with troubleshooting.

## 6. SPECIFICATIONS

Feature	Detail
Product Dimensions	7 x 5 x 0.04 inches
Item Weight	1.13 ounces

Feature	Detail
ASIN	B09QKF2M2S
Item Model Number	DXY0117
Manufacturer	EIOTCLUB
Date First Available	January 17, 2022
Service Provider	T-Mobile and AT&T (USA Nationwide Networks)
Cellular Technology	LTE
UPC	765071506904

## 7. WARRANTY AND SUPPORT

---

EIOTCLUB is committed to providing reliable service and customer satisfaction.

### 7.1. Service Guarantees

- **No Contracts:** The service operates without long-term contracts.
- **Transparent Pricing:** No hidden fees, extra fees, or activation fees.

### 7.2. After-Sales Support

- **30-Day Money Back:** A 30-day money-back guarantee is provided.
- **10-Year Long Term Promise:** EIOTCLUB offers a 10-year commitment to safeguard your rights. If the product breaks, you are eligible for free exchange and returns at any time.
- **24/7 Online Support:** Dedicated online customer support is available 24/7 to assist with any inquiries or issues.

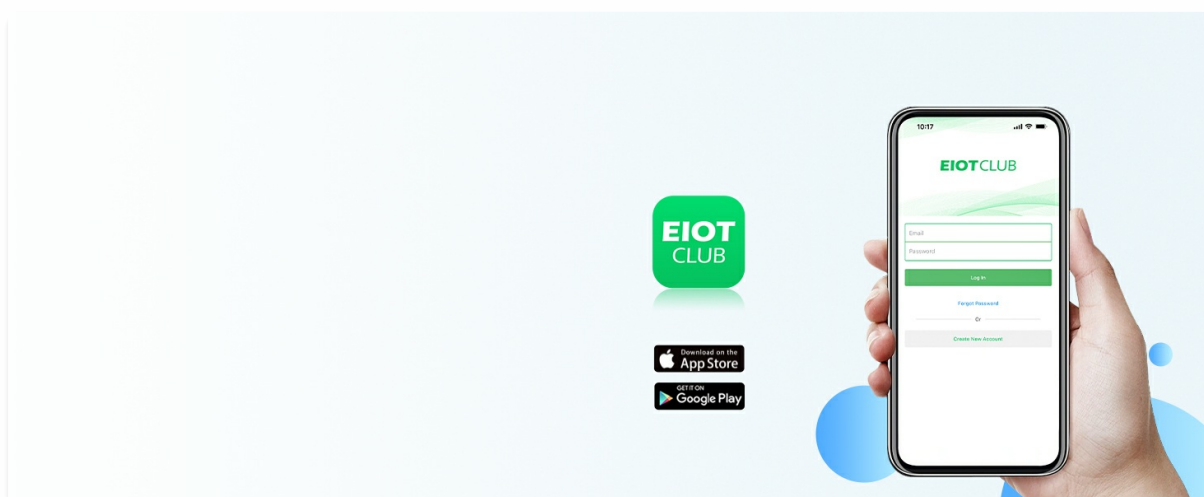


Image: Overview of EIOTCLUB's comprehensive after-sales support, including guarantees and online assistance.

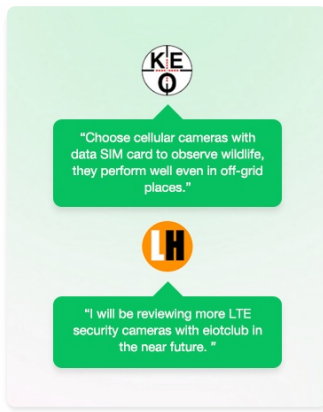


Image: ELOTCLUB's 10-year commitment to product quality and customer satisfaction.