

BUGANI M83

BUGANI Shock Bluetooth Speaker User Manual

Model: M83 | Brand: BUGANI

1. INTRODUCTION

Thank you for choosing the BUGANI Shock Portable Bluetooth Speaker. This manual provides essential information for setting up, operating, and maintaining your speaker to ensure optimal performance and longevity. The BUGANI Shock speaker delivers powerful 60W audio, features Bluetooth 5.3 for stable connections, is IPX6 waterproof, and offers up to 32 hours of playtime, making it ideal for both indoor and outdoor use.



The BUGANI Shock Portable Bluetooth Speaker, designed for robust audio performance.

2. WHAT'S IN THE BOX

Please check the package contents to ensure all items are present:

- 1 x BUGANI Shock Portable Bluetooth Speaker
- 1 x Type-C Charging Cable
- 1 x AUX Cable
- 1 x User Manual
- Lifetime Technical Support Information

SUPPORT
TF CARD



3. PRODUCT FEATURES

The BUGANI Shock speaker is engineered with advanced features for a superior audio experience:

- **Powerful 60W Audio:** Equipped with two mid-bass external magnetic speakers, two tweeters, and two subwoofer diaphragms for crystal clear sound and deep bass.
- **True Wireless Stereo (TWS):** Connect two BUGANI Shock speakers wirelessly to achieve a combined 120W stereo surround sound experience.
- **Advanced Bluetooth 5.3:** Ensures faster connection speeds, more stable signal transmission, and lower power consumption with a wireless range of up to 100 feet.
- **IPX6 Waterproof Rating:** Designed to resist high-pressure, heavy sprays of water, making it suitable for outdoor environments like beach parties or poolside gatherings.
- **Mobile Power Bank Function:** The built-in large-capacity battery can also be used to charge your smartphone or other USB-powered devices via the USB port.
- **Long Playtime:** Enjoy up to 32 hours of continuous music playback on a single charge.
- **Multiple Playback Options:** Supports Bluetooth, 3.5mm AUX audio input, and TF-Card slot for versatile music sources.

TRUE WIRELESS BLUETOOTH SPEAKER

Pair TWO speakers together
to get **120W** super powerful stereo




Experience 120W super powerful stereo sound by pairing two BUGANI Shock speakers wirelessly.

BUGANI SHOCK 60W SPEAKER

Superior Sound Glarity Punchy and Deep Bass

 TWO TWEETERS



 TWO SUBWOOFERS

The speaker's internal design with two tweeters and two subwoofers for enhanced sound clarity and deep bass.

Bluetooth 5.3 Connection Speed, Stable Signal Transmission



Bluetooth 5.3

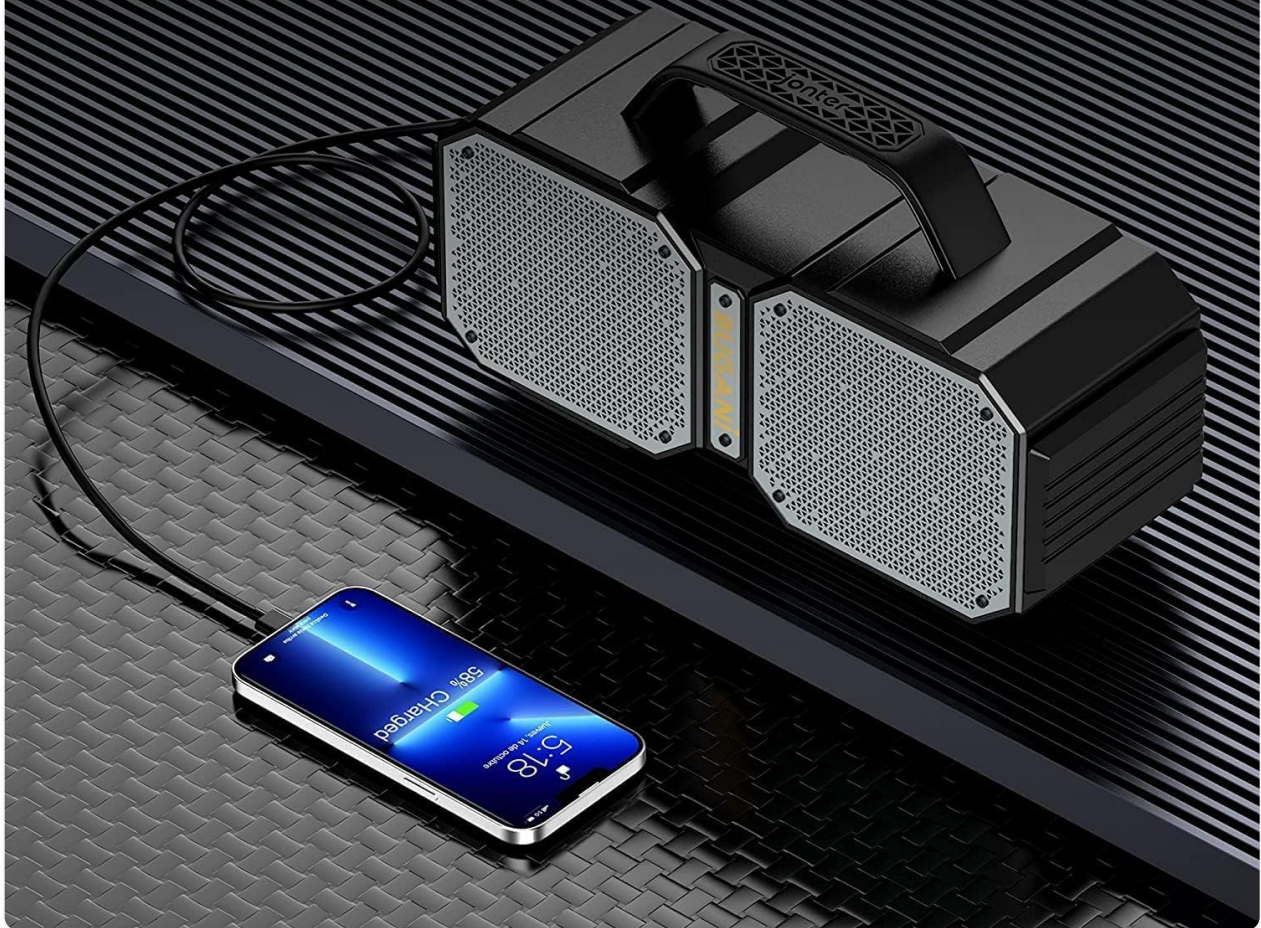


100 ft Hookup Distance

Bluetooth 5.3 ensures a fast and stable connection up to 100 feet.

32 Hour Playtime

The USB port allows you to charge your smartphone from the outdoor portable speaker.



The speaker doubles as a power bank, allowing you to charge your mobile devices.

Your browser does not support the video tag.

Official product video showcasing the BUGANI SHOCKW Bluetooth Speaker's features, including deep bass, waterproof design, and True Wireless Stereo capabilities.

4. SETUP

4.1 Charging the Speaker

1. Connect the provided Type-C charging cable to the charging port on the speaker.
2. Connect the other end of the cable to a USB power adapter (not included) or a computer's USB port.
3. The charging indicator light will illuminate. Once fully charged, the light will change or turn off (refer to specific LED behavior in the full manual if available). A full charge takes approximately 32 hours for the battery to reach its maximum capacity.

4.2 Powering On/Off

- **To Power On:** Press and hold the Power button () for a few seconds until you hear an audible prompt or see the indicator light illuminate.

- **To Power Off:** Press and hold the Power button () again for a few seconds until you hear an audible prompt or the indicator light turns off.

4.3 Bluetooth Pairing

1. Ensure the speaker is powered on and in Bluetooth pairing mode (the Bluetooth indicator light will typically flash).
2. On your mobile device (smartphone, tablet, etc.), enable Bluetooth.
3. Search for available Bluetooth devices. You should see "BUGANI SHOCK" or "M83" in the list.
4. Select the speaker from the list to connect. Once connected, you will hear a confirmation sound, and the Bluetooth indicator light will become solid.

5. OPERATING INSTRUCTIONS

5.1 Music Playback

- **Play/Pause:** Press the Play/Pause button (||) once.
- **Next Track:** Press the "+" button (Next Track) once.
- **Previous Track:** Press the "-" button (Previous Track) once.

5.2 Volume Control

- **Increase Volume:** Press and hold the "+" button.
- **Decrease Volume:** Press and hold the "-" button.

5.3 Answering/Ending Calls

The speaker has a built-in microphone for hands-free calls.

- **Answer Call:** Press the Play/Pause button (||) once when a call comes in.
- **End Call:** Press the Play/Pause button (||) once during a call.
- **Reject Call:** Press and hold the Play/Pause button (||) for 2 seconds.

5.4 True Wireless Stereo (TWS) Pairing

To pair two BUGANI Shock speakers for a stereo experience:

1. Ensure both speakers are powered on and not connected to any Bluetooth device.
2. On one speaker, press and hold the 'M' (Mode) button for a few seconds until you hear a TWS pairing prompt. This speaker will be the primary speaker.
3. The primary speaker will automatically search for the second speaker. Once connected, you will hear a confirmation sound.
4. Now, connect your mobile device to the primary speaker via Bluetooth as described in section 4.3. Both speakers will play audio in stereo.

5.5 Using AUX-in and TF Card

- **AUX-in:** Insert the 3.5mm AUX cable into the speaker's AUX port and connect the other end to your audio source. The speaker will automatically switch to AUX mode.
- **TF Card:** Insert a TF (MicroSD) card with music files into the TF card slot. The speaker will automatically switch to TF card playback mode.

6. MAINTENANCE

6.1 Cleaning

- Wipe the speaker with a soft, damp cloth.
- Do not use abrasive cleaners, alcohol, or chemical solvents, as these may damage the surface.
- Ensure all ports are dry before charging or connecting cables.

6.2 Storage

- Store the speaker in a cool, dry place away from direct sunlight and extreme temperatures.
- If storing for an extended period, charge the battery to approximately 50% every few months to preserve battery life.

6.3 Battery Care

- Avoid fully discharging the battery frequently.
- Do not expose the speaker to temperatures above 60°C (140°F) as this can damage the battery.
- Use only the provided charging cable or a certified equivalent.

7. TROUBLESHOOTING

Problem	Possible Cause	Solution
Speaker does not power on.	Battery is low or depleted.	Charge the speaker fully.
No sound from speaker.	Volume is too low; Device not connected; Incorrect input mode.	Increase speaker and device volume; Ensure Bluetooth is connected or AUX/TF card is properly inserted; Switch input mode.
Cannot pair with Bluetooth device.	Speaker is not in pairing mode; Device Bluetooth is off; Too far from speaker; Interference.	Ensure speaker is in pairing mode (flashing light); Turn device Bluetooth on/off; Move device closer to speaker; Avoid strong electromagnetic interference.
Sound is distorted.	Volume too high; Low battery; Device issue.	Lower volume; Charge speaker; Test with another audio source.
TWS pairing fails.	Speakers already connected to another device; Speakers too far apart.	Disconnect speakers from any other Bluetooth devices; Ensure speakers are within close proximity (e.g., 1 meter) during TWS pairing.

8. SPECIFICATIONS

Feature	Detail
Model Name	SHOCK (M83)
Speaker Type	Subwoofer

Feature	Detail
Speaker Maximum Output Power	120 Watts (when two speakers are paired)
Connectivity Technology	Bluetooth 5.3
Bluetooth Range	100 Feet
Water Resistance Level	IPX6 Waterproof
Battery Life	32 Hours
Charging Time	Approx. 32 Hours (for full battery capacity)
Product Dimensions	5"D x 3"W x 3"H
Item Weight	4.84 pounds (2.2 Kilograms)
Power Source	Battery Powered (1 Lithium Polymer battery included)
Included Components	Waterproof Bluetooth Speaker, Type-C Charging Cable, AUX Cable, User Manual



Physical dimensions of the BUGANI Shock speaker.

9. WARRANTY AND SUPPORT





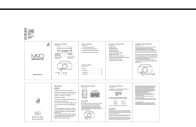

The BUGANI Shock Bluetooth Speaker comes with a Limited Warranty. Additionally, BUGANI provides Lifetime Technical Support for this product.

For technical assistance, warranty claims, or any product-related inquiries, please contact BUGANI customer support through the following channels:

- **Email:** Refer to the contact information provided in your product packaging or on the official BUGANI website.
- **Online Support:** Visit the BUGANI official website for FAQs and support resources.

Please retain your purchase receipt as proof of purchase for warranty purposes.

Related Documents - M83

	<p>BUGANI M83 IPX5 Waterproof Wireless Speaker User Manual Features, Specs, Pairing Guide</p> <p>User manual for the BUGANI M83 IPX5 Waterproof Wireless Speaker. Learn about product features, specifications, pairing, TWS connection, care, and warranty.</p>
	<p>BUGANI E8 Wireless Headphone User Manual</p> <p>User manual for the BUGANI E8 Wireless Headphone, covering features, specifications, pairing, guidance, care, warranty, and FCC compliance.</p>
	<p>BUGANI Free B10 Open-Ear Headphone User Manual</p> <p>User manual for the BUGANI Free B10 Open-Ear Wireless Headphones, covering product overview, power, charging, pairing, volume control, call functions, music playback, wearing instructions, voice control, factory reset, indicator lights, and warranty information.</p>
	<p>BUGANI B09 Wireless Earbuds Quick Start Guide</p> <p>A quick start guide for the BUGANI B09 wireless in-ear earbuds, covering setup, features, controls, and warranty information.</p>
	<p>Bugani M90 Waterproof Wireless Speaker User Manual</p> <p>User manual for the Bugani M90 Waterproof Wireless Speaker, detailing its features, specifications, pairing instructions, and care guidelines.</p>
	<p>Bugani M115 Waterproof Wireless Speaker User Manual</p> <p>Comprehensive user manual for the Bugani M115 waterproof wireless speaker, detailing setup, features, operation, care, and warranty information.</p>