

Manuals+

[Q & A](#) | [Deep Search](#) | [Upload](#)

manuals.plus /

› [XinXu](#) /

› [XinXu Gravity Automatic Electric Pepper and Salt Grinder Instruction Manual, Model 546](#)

XinXu 546

XinXu Gravity Automatic Electric Pepper and Salt Grinder Instruction Manual

Model: 546

1. INTRODUCTION

This manual provides instructions for the safe and efficient use of your XinXu Gravity Automatic Electric Pepper and Salt Grinder. This device is designed for grinding various small particle spices such as pepper, sea salt, and Himalayan salt. Its automatic operation and adjustable coarseness settings offer convenience in the kitchen.



Image 1.1: The Xinxu Gravity Automatic Electric Pepper and Salt Grinder set, showcasing two grinders filled with different spices.

2. COMPONENTS

Each Xinxu Gravity Automatic Electric Grinder consists of the following main parts:

- **Grinder Body:** The upper section, typically made of stainless steel, housing the motor and battery compartment.
- **Transparent Spice Container:** The lower acrylic section where spices are stored.
- **Ceramic Grinding Core:** Located at the bottom, responsible for grinding spices.
- **Coarseness Adjustment Knob:** A mechanism at the bottom to control grind size.
- **Blue LED Light:** Illuminates during operation to show spice output.
- **Battery Compartment:** Located inside the grinder body, requiring 6 AAA batteries (not included).

IXILÉ

ADJUSTABLE COARSENESS

Simply adjust the coarseness button of the ceramic grinder burr to the left or to the right to grind the most suitable spices to your specifications.

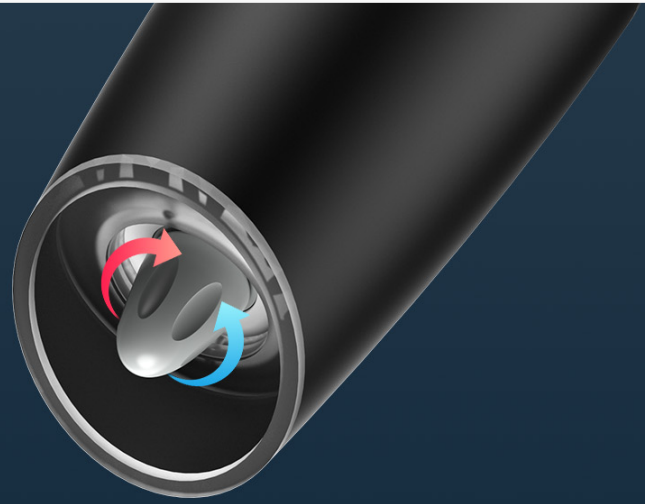


Image 2.1: Illustration of the durable ceramic grinding core, designed for efficient spice grinding.

3. SETUP

3.1 Battery Installation

1. Gently twist and pull the top section of the grinder to separate it from the transparent spice container.
2. Locate the battery compartment. Insert 6 AAA batteries (not included) into the compartment, ensuring correct polarity (+/-) as indicated.
3. Align the top section with the spice container and twist to secure it back in place.

3.2 Filling with Spices

1. Unscrew the transparent spice container from the main grinder body.
2. Fill the container with your desired spices, such as peppercorns or salt crystals. The container has a capacity of approximately 2.8 oz for pepper or 6 oz for salt (about 7 tablespoons). Do not overfill.
3. Screw the transparent container back onto the grinder body until securely fastened.

EASY TO USE

Gravity induction design, easy to operate



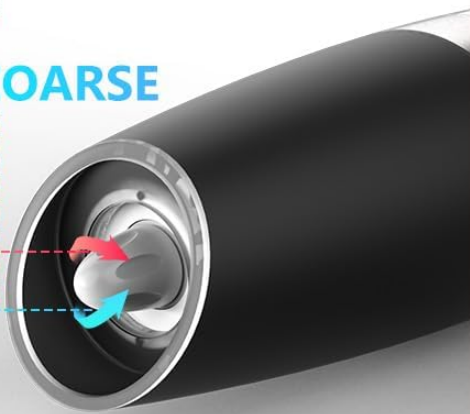
01 Install 6 AAA Batteries
(Not included)

approx. 7 tbsp.



02 Refill with the Spice
You Need

FINE
COARSE



03 Adjust Coarseness, Turn Left
to be Coarse, and Right Fine



04 Tilt Grinder to Release
Fresh Spices

Image 3.1: Visual guide demonstrating battery installation, spice refilling, coarseness adjustment, and gravity-activated operation.

4. OPERATING INSTRUCTIONS

4.1 Automatic Grinding

The XinXu grinder features gravity induction for automatic operation. To begin grinding, simply tilt the grinder upside down. The grinding mechanism will activate, and the blue LED light will illuminate, allowing you to see the amount of spice being dispensed.

GRAVITY SWITCH

No more manual grinding



Turn On Work
Upside Down



Stop Work
Upright



Image 4.1: The gravity switch in action, demonstrating how tilting the grinder initiates the grinding process.

4.2 Adjusting Coarseness

You can adjust the grind coarseness to suit your preference:

- Locate the coarseness adjustment knob at the bottom of the grinder.
- Rotate the knob clockwise for a finer grind.
- Rotate the knob counter-clockwise for a coarser grind.

ADJUSTABLE COARSENESS

Adopt 360° rotation of grinding ceramic knob to adjust coarseness meet different size seasoning needs



3 Coarseness Setting



TURN RIGHT
TO FINE

TURN LEFT TO
ROUGH

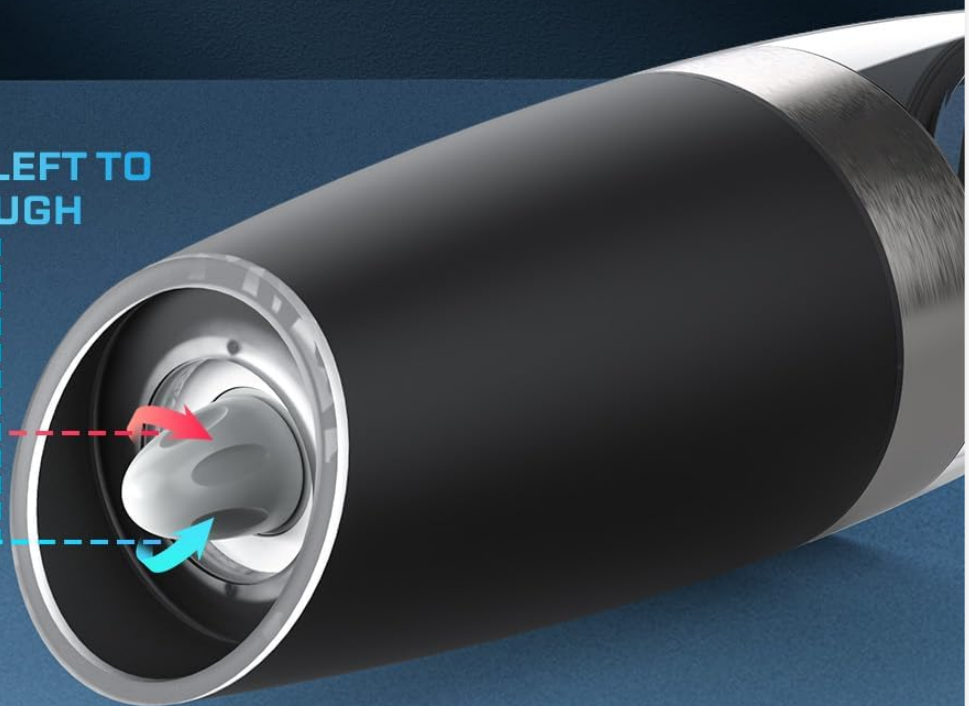


Image 4.2: Detailed view of the coarseness adjustment mechanism, allowing selection between fine, medium, and coarse grind settings.

4.3 Stopping Operation

To stop the grinding process, simply return the grinder to an upright position. The mechanism will cease, and the LED light will turn off.

5. MAINTENANCE

5.1 Cleaning

- Wipe the exterior of the grinder body with a clean, damp cloth. Do not use abrasive cleaners.
- The transparent acrylic spice container can be hand-washed with mild soap and water. Ensure it is completely dry before refilling with spices.
- **Important:** Do not immerse the grinder's main body in water, as this can damage the electronic components. This product is not dishwasher safe.

5.2 Ceramic Grinding Core Care

The ceramic grinding core is designed for durability. To maintain its performance, avoid grinding extremely hard substances that could cause damage. Regular cleaning of the spice container helps prevent residue buildup around the core.

6. TROUBLESHOOTING

- **Grinder Not Working or Clogged:**

If the grinder does not operate or spices are not dispensing, first ensure that the 6 AAA batteries are correctly installed and have sufficient charge. If the issue persists, adjust the coarseness knob to a coarser setting. This can help clear any clogged particles within the grinding mechanism.

- **Inconsistent Grind:**

Verify that the coarseness adjustment knob is set to your desired level. Ensure the spice container is not overfilled, which can sometimes affect grinding consistency.

- **Blue LED Light Not Illuminating:**

Check the battery installation and charge. The LED light should activate automatically when the grinder is tilted for operation.

7. SPECIFICATIONS

Feature	Detail
Brand	XinXu
Model	546
Material	Acrylic, Ceramic, Stainless Steel
Product Dimensions	2.48" W x 7.9" H (6.3 cm W x 20.2 cm H)
Item Weight	1.39 pounds
Operation Mode	Automatic (Gravity Induction)
Power Source	6 x AAA batteries (not included) per grinder
Spice Capacity	Approx. 2.8 oz (pepper) / 6 oz (salt) or 7 tablespoons
Dishwasher Safe	No



Image 7.1: Visual representation of the grinder's dimensions and battery specifications.

8. WARRANTY AND SUPPORT

8.1 Customer Support

For any questions, concerns, or assistance with your XinXu Gravity Automatic Electric Pepper and Salt Grinder, please contact XinXu customer service. We provide 7x24 after-sales service. You can typically find contact information by navigating to your order details on the purchase platform.

8.2 Warranty Information

Specific warranty details are not provided in the product information. Please refer to your purchase receipt or contact customer support for any applicable warranty coverage.



© 2023 XinXu. All rights reserved.