

amFilm OT-S22

amFilm OneTouch Screen Protector User Manual

AMFILM ONETOUCH SCREEN PROTECTOR FOR SAMSUNG GALAXY S22 5G 6.1 INCH

Model: OT-S22

INTRODUCTION

This manual provides detailed instructions for the installation, operation, and maintenance of your amFilm OneTouch Screen Protector for the Samsung Galaxy S22 5G 6.1 Inch. This product is designed to offer superior protection with an easy, bubble-free application process.



Figure 1: amFilm OneTouch Screen Protector Kit for Samsung Galaxy S22 6.1 Inch.

PACKAGE CONTENTS

Your amFilm OneTouch Screen Protector package includes the following items:

- 2 x amFilm OneTouch Screen Protectors (pre-installed in auto-alignment tool)
- 2 x Camera Lens Protectors
- 2 x Wet Wipes
- 2 x Microfiber Cloths
- 2 x Large Dust Removal Covers
- 2 x Dust Removal Stickers



Figure 2: Detailed view of all items included in the package.

SETUP AND INSTALLATION

The amFilm OneTouch Screen Protector features a patented auto-alignment tool for a quick and easy installation. Please follow these steps carefully for optimal results.

Screen Protector Installation

Watch the official installation video for a visual guide:

Your browser does not support the video tag.

Video 1: Installation Video for Samsung Galaxy S22 Screen Protector by TechMatte. This video demonstrates the step-by-step process of applying the screen protector using the auto-alignment tool.

1. **Clean the Screen:** Begin by thoroughly cleaning your phone screen using the provided wet wipe. Follow up with the microfiber cleaning cloth to remove any streaks or smudges. Ensure the screen is completely dry and free of dust.
2. **Remove Dust:** Use the large dust removal cover or dust removal stickers to pick up any remaining dust particles from the screen. This step is crucial for a bubble-free application.
3. **Prepare the Alignment Tool:** The screen protector comes pre-installed in the auto-alignment tool. Locate the tab marked "TOP" and gently pull the tab downwards to remove the mask film from the screen protector. Ensure you pull downwards to avoid dislodging the screen protector from the tray.
4. **Align and Apply:** Carefully place the auto-alignment tool over your Samsung Galaxy S22 6.1 inch phone. The tool is designed to perfectly align the screen protector with your device. Once aligned, press down gently on the circular cutout at the top for 2 seconds.
5. **Smooth Application:** Press the screen protector firmly on the "TOP" section of the alignment tool and slowly slide your finger over the entire length of the screen protector from top to bottom. You will see the adhesive spread across the screen automatically.
6. **Remove Tray:** Once the adhesive has fully spread, carefully remove the application tray from your phone. The blue film on the screen protector will come off with the tray, leaving the tempered glass perfectly applied.
7. **Final Adhesion:** If necessary, gently press along the edges of the screen protector to enhance adhesion to the phone's surface.



Figure 3: Visual steps for screen and camera lens protector installation.

Camera Lens Protector Installation

1. **Clean Camera Lenses:** Use a wet wipe and microfiber cloth to clean the camera lenses on the back of your phone.
2. **Remove Dust:** Use a dust removal sticker to ensure no dust remains on the camera lenses.
3. **Prepare Lens Protector:** Bend the plastic sheet containing the camera lens protectors to carefully peel off one lens protector.
4. **Align and Apply:** Align the camera lens protector precisely over your phone's camera lenses.
5. **Secure Adhesion:** Press firmly on the protector to help it adhere completely to the camera lens area.

OPERATING INSTRUCTIONS

Fingerprint Sensor Functionality

After installing the screen protector, it is highly recommended to re-register your fingerprints for optimal performance of the in-display fingerprint sensor. This ensures accurate and responsive unlocking.

Scan Your Fingerprint

Please note:

The Fingerprint unlock Feature may **NOT** be compatible with some phones due to the varying of ultrasound sensors.

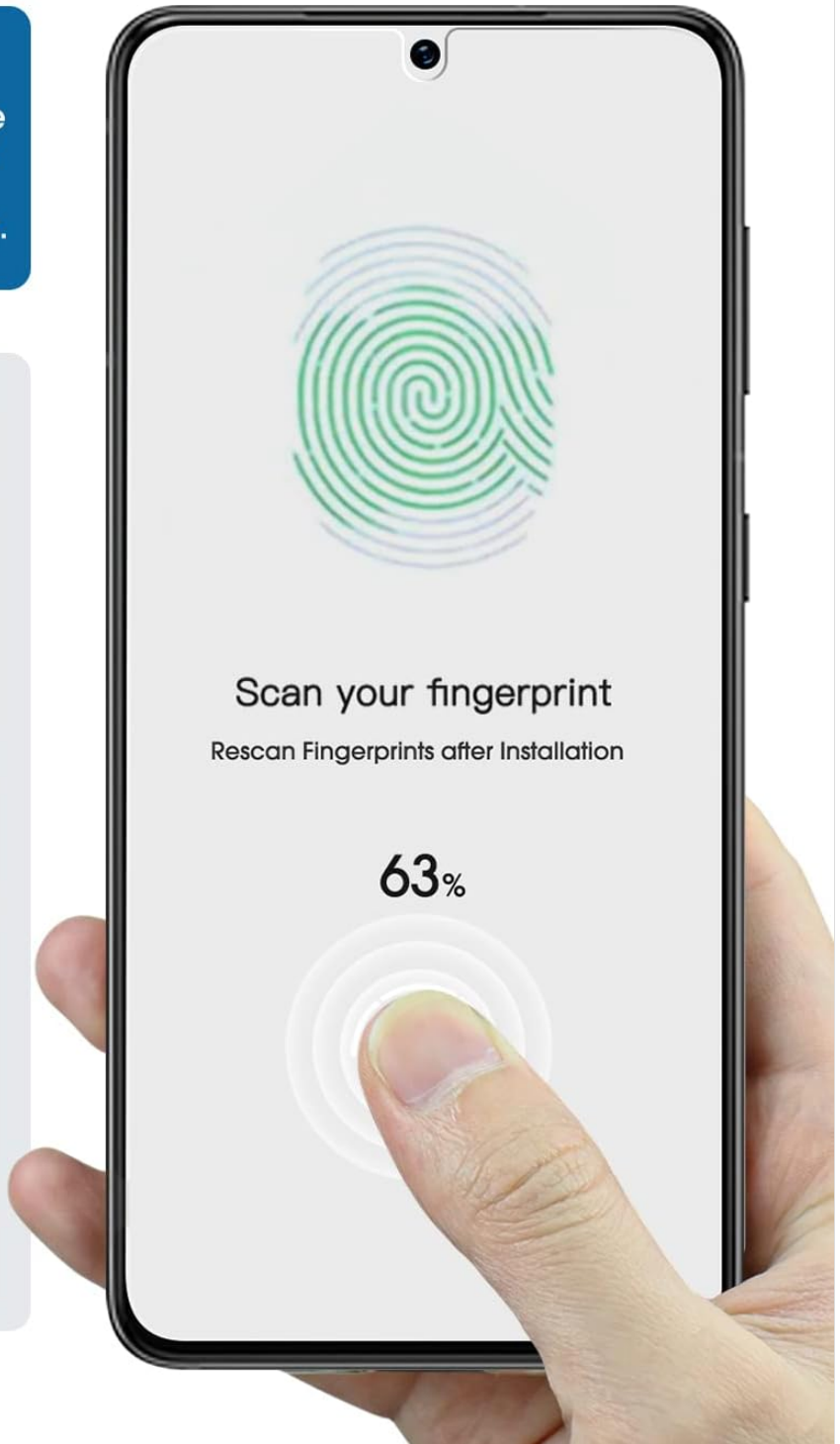
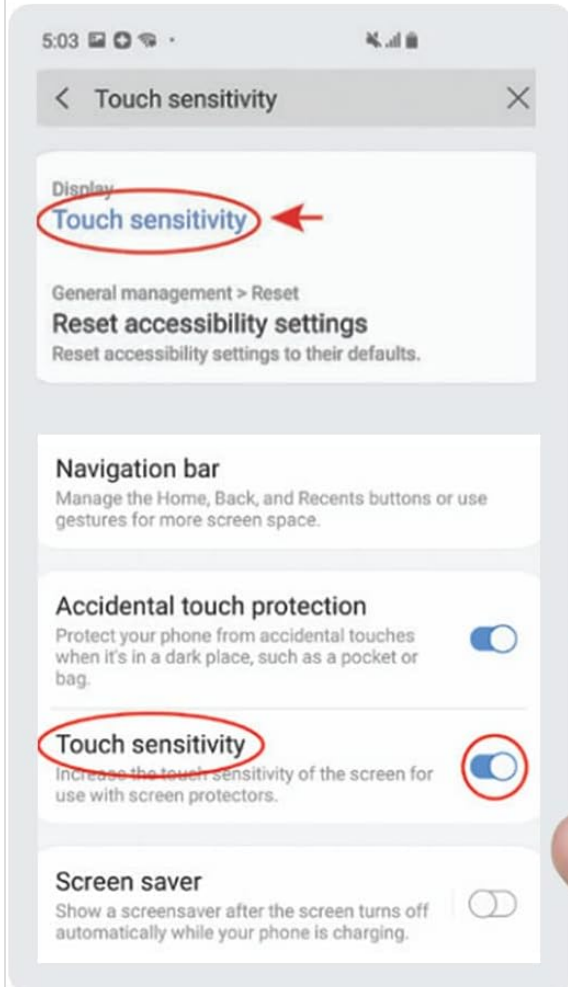


Figure 4: Guide to rescanning your fingerprint for improved sensor performance.

Case Compatibility

The amFilm OneTouch Screen Protector is designed to be case-friendly, meaning it is slightly smaller than the actual screen size to ensure compatibility with most phone cases without lifting or bubbling at the edges.

Case Friendly

Protector is smaller than the actual size of the phone to ensure it is compatible with MOST cases



Figure 5: Illustration of the screen protector's case-friendly dimensions.

MAINTENANCE

To maintain the clarity and responsiveness of your amFilm screen protector, regularly wipe it with a clean, soft microfiber cloth. The oleophobic coating helps reduce fingerprints and smudges, but occasional cleaning will keep your screen pristine.

Avoid using harsh chemicals or abrasive materials, as these can damage the coating and the tempered glass.

TROUBLESHOOTING

Common Issues and Solutions

- **Bubbles After Installation:** Small bubbles can sometimes appear immediately after installation. Most small bubbles

will naturally disappear within 24-48 hours. For larger bubbles, gently lift the nearest corner of the screen protector and slowly push the bubble towards the edge using a microfiber cloth or a soft card. Re-adhere the lifted section carefully.

- **Fingerprint Sensor Not Responsive:** If your fingerprint sensor is not working correctly after installation, ensure you have re-registered your fingerprints. Navigate to your phone's settings (e.g., "Display" > "Touch sensitivity" or "Biometrics and security" > "Fingerprints") and delete existing fingerprints, then add new ones with the screen protector applied.
- **Screen Protector Lifting at Edges:** This can sometimes occur if the screen was not perfectly clean or if the phone case is too tight. Ensure the screen is free of dust and debris before installation. If using a case, verify it is not pushing against the edges of the screen protector. The amFilm protector is designed to be case-friendly, but some overly tight cases may still cause issues.

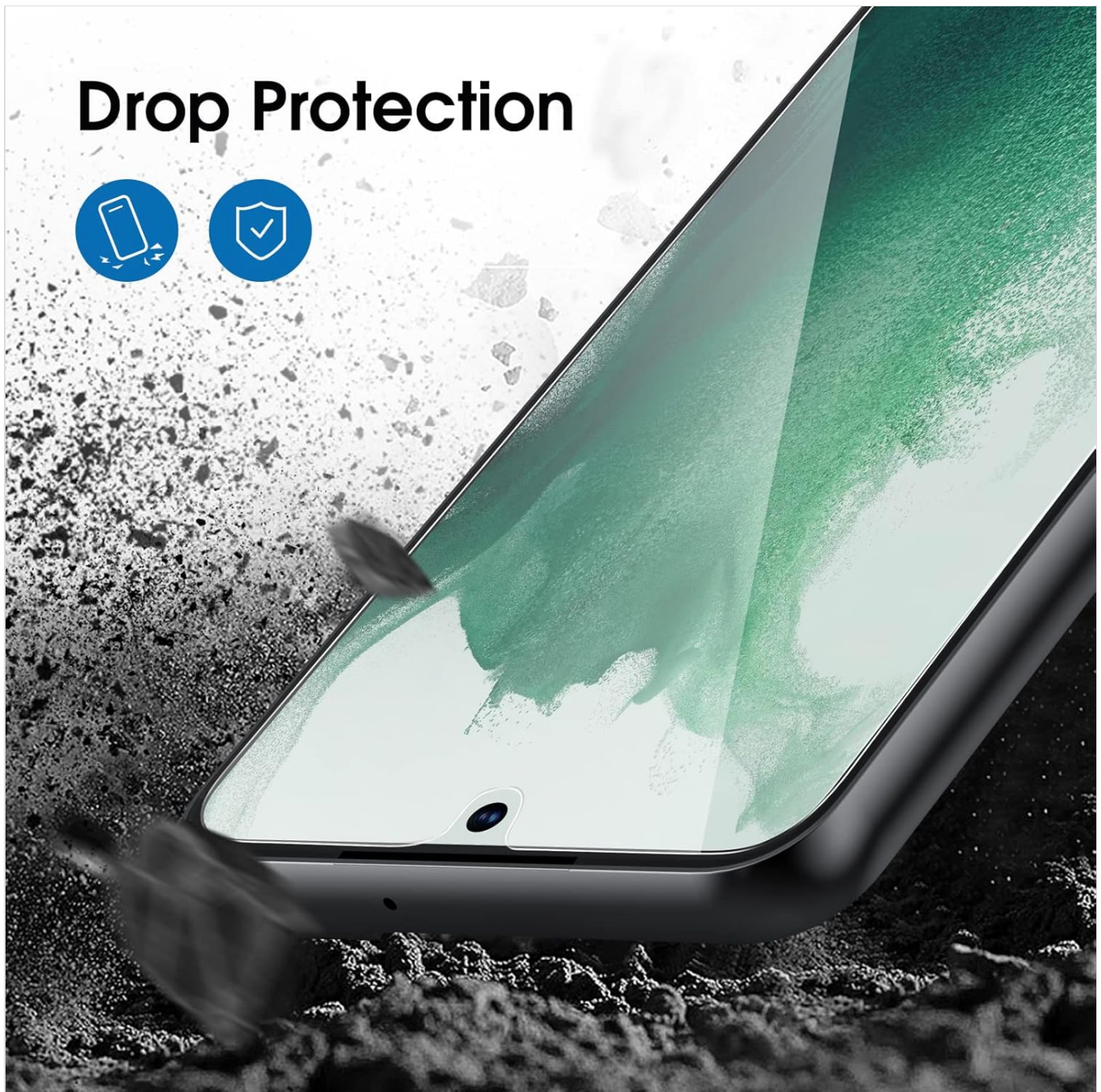


Figure 6: The 9H hardness tempered glass provides robust drop protection.

SPECIFICATIONS

Feature	Detail
Brand	amFilm
Model Number	OT-S22
Compatible Devices	Samsung Galaxy S22 5G 6.1 inch 2022
Material	Tempered Glass
Item Hardness	9H
Special Features	Scratch Resistant, Anti-Fingerprint (Oleophobic Coating), Auto-Alignment Tool, Bubble Free
Product Dimensions	6.1 x 6.1 x 0.5 inches
Item Weight	3.2 ounces
Manufacturer	TechMatte

WARRANTY AND SUPPORT

amFilm offers a Lifetime Warranty for this product upon registration. For warranty claims or technical support, please refer to the contact information provided with your product packaging or visit the official amFilm website.

