



[Manuals.plus](#) /

> [Renkforce](#) /

> Renkforce Pro 6 3D Printer Replacement Y-Axis Motor RF-4953536 User Manual

## Renkforce RF-4953536

# Renkforce Pro 6 3D Printer Replacement Y-Axis Motor RF-4953536 User Manual

Model: RF-4953536

## 1. INTRODUCTION

---

This manual provides essential instructions for the installation, operation, and maintenance of your Renkforce RF-4953536 Replacement Y-Axis Motor, designed specifically for the Renkforce Pro 6 3D Printer (model 2356116). This component is crucial for ensuring precise and reliable movement along the Y-axis during 3D printing operations.

## 2. SAFETY INSTRUCTIONS

---

- Always disconnect the 3D printer from the power supply before performing any installation, maintenance, or repair work.
- Ensure that the work area is clean, well-lit, and free from obstructions.
- Handle the motor with care to avoid damage to its components or wiring.
- Do not attempt to modify the motor or its wiring. Use only original or approved replacement parts.
- Keep small parts and tools away from children.
- If you are unsure about any step, consult a qualified technician or Renkforce support.

## 3. PACKAGE CONTENTS

---

Verify that all items are present and undamaged upon unpacking:

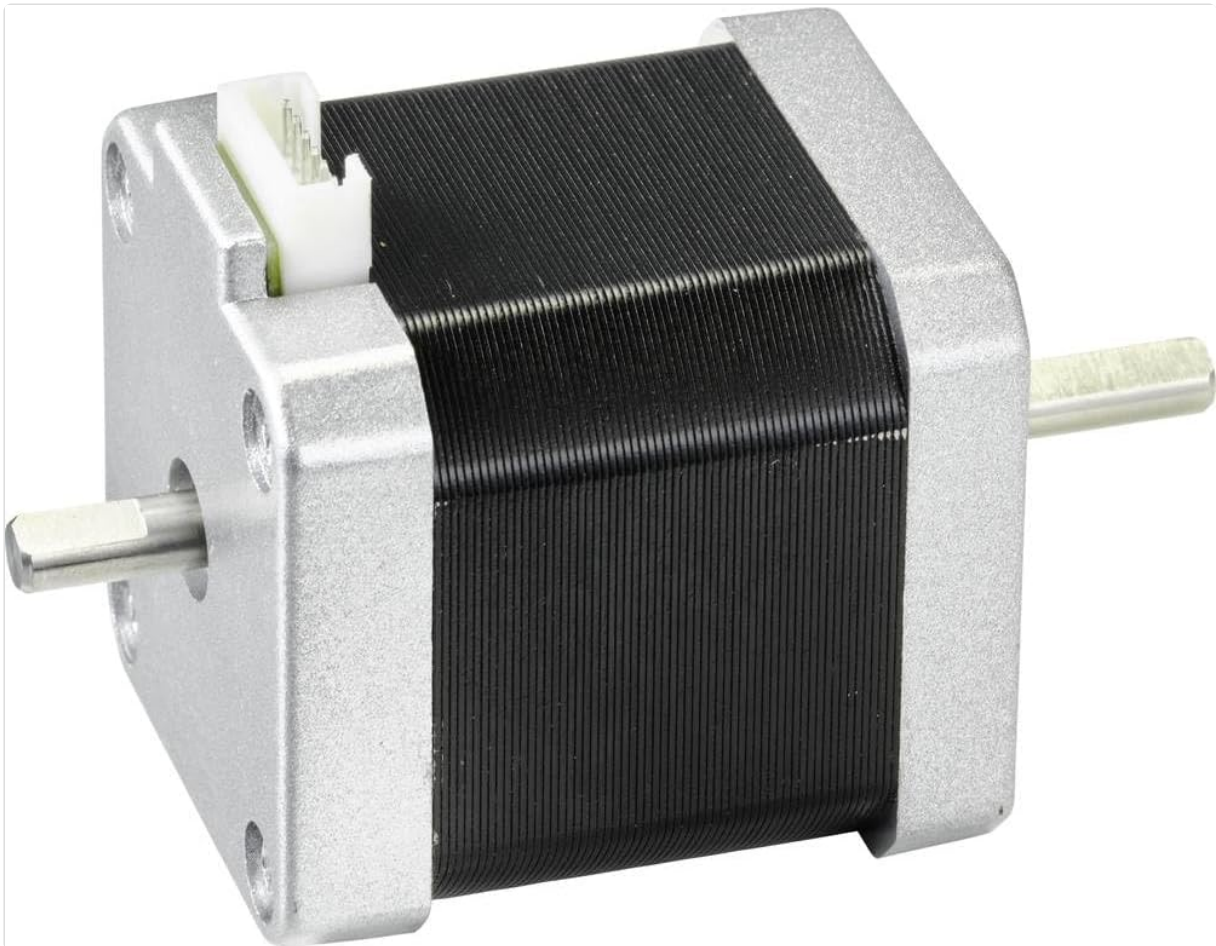
- 1 x Renkforce RF-4953536 Replacement Y-Axis Motor
- (No other accessories are typically included with this replacement part.)

## 4. INSTALLATION

---

Follow these steps to replace the Y-axis motor on your Renkforce Pro 6 3D Printer:

1. **Power Off:** Ensure the 3D printer is completely powered off and unplugged from the mains electricity supply.
2. **Access Motor:** Carefully locate the existing Y-axis motor on your Renkforce Pro 6 3D printer. This typically involves removing any protective covers or panels.
3. **Disconnect Wiring:** Gently disconnect the electrical connector from the old Y-axis motor. Note the orientation of the connector for re-installation.
4. **Remove Old Motor:** Unscrew and carefully remove the old Y-axis motor from its mounting bracket. Keep the screws for the new motor.
5. **Install New Motor:** Position the new Renkforce RF-4953536 motor into the mounting bracket. Secure it firmly using the screws removed earlier. Ensure it is aligned correctly and does not obstruct any moving parts.
6. **Connect Wiring:** Reconnect the electrical connector to the new motor. Ensure the connection is secure and correctly oriented.
7. **Reassemble:** Replace any protective covers or panels that were removed.
8. **Test:** Plug the 3D printer back into the power supply and power it on. Perform a test movement of the Y-axis to confirm proper functionality.



*Figure 1: Renkforce RF-4953536 Replacement Y-Axis Motor. This image shows the stepper motor with its electrical connector and mounting points.*

## 5. OPERATION

---

The Renkforce RF-4953536 Y-Axis Motor operates as an integral part of your Renkforce Pro 6 3D Printer's motion system. Once correctly installed, its operation is controlled directly by the 3D printer's firmware and control board.

There are no direct user controls for the motor itself. Ensure your 3D printer's firmware is up-to-date for optimal performance.

## 6. MAINTENANCE

---

- **Cleaning:** Periodically inspect the motor for dust and debris. Use a soft, dry cloth or a small brush to gently clean the exterior. Avoid using liquids or solvents.
- **Connections:** Occasionally check the electrical connections to ensure they remain secure. Loose connections can lead to intermittent operation or failure.
- **Mounting:** Verify that the motor remains securely mounted to the printer frame. Vibrations during operation can sometimes loosen screws over time.

## 7. TROUBLESHOOTING

---

If you encounter issues with your Y-axis motor, consider the following common troubleshooting steps:

- **Motor Not Moving:**
  - Check all electrical connections to the motor and the control board. Ensure they are firmly seated.
  - Verify that the 3D printer is receiving power.
  - Ensure no physical obstructions are preventing the Y-axis from moving.
- **Unusual Noise from Motor:**
  - Inspect for any loose components or foreign objects near the motor or the Y-axis belt/lead screw.
  - Ensure the motor is securely mounted and not vibrating excessively.
  - Check the Y-axis belt tension; it should be taut but not overly tight.
- **Inaccurate Y-Axis Movement:**
  - Verify that the Y-axis belt is not slipping and is correctly tensioned.
  - Check for any debris or wear on the Y-axis rails or bearings.

If these steps do not resolve the issue, contact Renkforce customer support for further assistance.

## 8. SPECIFICATIONS

---

<b>Brand:</b>	Renkforce
<b>Model Name:</b>	Renkforce Replacement Y-Axis Motor for Pro 6 3D Printer
<b>Model Number:</b>	RF-4953536
<b>Compatible with:</b>	Renkforce Pro 6 3D Printer (2356116)
<b>Item Weight:</b>	419 Grams
<b>Manufacturer:</b>	Renkforce
<b>ASIN:</b>	B09Q21KCXY

## 9. WARRANTY AND SUPPORT

---

**Warranty:** This product comes with a 1-year availability of spare parts in the EU, as per manufacturer's terms.

**Customer Support:** For technical assistance, warranty claims, or further information, please contact Renkforce customer support through their official website or the retailer where the product was purchased. Please have your model number (RF-4953536) and purchase details ready when contacting support.