



Manuals.plus /

- › **Primos Hunting** /
- › Tasco Trail Camera User Manual

## Primos Hunting 119219CT2

# Tasco Trail Camera User Manual

Model: 119219CT2

## INTRODUCTION

---

This manual provides comprehensive instructions for the setup, operation, maintenance, and troubleshooting of your Tasco 12MP Low Glow Trail Camera. Designed for ease of use, this camera is ideal for monitoring wildlife or for security purposes. Please read this manual thoroughly before using your camera to ensure optimal performance and longevity.



Image: Two Tasco 12MP Low Glow Trail Cameras, showing their compact design and tan finish.

## PACKAGE CONTENTS

---

Your Tasco Trail Camera package should include the following items:

- Two (2) Tasco 12MP Low Glow Trail Cameras
- Mounting Straps (one per camera)
- User Manual (this document)

**Note:** AA batteries and SD cards are not included and must be purchased separately.

## SETUP

---

### 1. Installing Batteries

The Tasco Trail Camera requires 8 AA batteries for operation. For best performance and battery life, use high-quality alkaline or lithium batteries.

1. Open the camera's latch on the side to access the interior compartment.
2. Locate the removable battery tray at the bottom of the camera.
3. Pull out the battery tray.
4. Insert 8 AA batteries into the tray, ensuring correct polarity (+/-) as indicated.
5. Slide the battery tray back into the camera until it clicks securely into place.
6. Close the camera latch firmly.



## LONG BATTERY LIFE

6 month battery life gives you plenty of time to let the camera 'soak' in the field or keep it incognito when used for security purposes. Runs on 8 AA batteries.



Image: The camera's interior with the removable battery tray, illustrating battery insertion.

## 2. Inserting an SD Card

The camera supports SD cards up to 32GB. A high-speed SD card (Class 10 or higher) is recommended for optimal performance, especially for video recording.

1. With the camera open, locate the SD card slot.
2. Insert the SD card into the slot with the metal contacts facing down, until it clicks into place.
3. To remove the SD card, gently push it in until it springs out.



Image: An open camera view highlighting the internal components, including the SD card slot.

### 3. Mounting the Camera

The camera comes with a mounting strap for easy attachment to trees, posts, or other surfaces.

1. Thread the provided strap through the slots on the back of the camera.
2. Secure the camera to a stable object at the desired height and angle. Ensure the camera is level and pointed towards the area you wish to monitor.
3. Tighten the strap firmly to prevent movement.



**STRAP INCLUDED!**

**ATTACH TO ANY SURFACE.**



Image: Examples of the camera mounted to different surfaces using the included strap.

## OPERATING THE CAMERA

### Powering On and Basic Settings

Once batteries and an SD card are installed, you can power on the camera and configure basic settings.

1. Open the camera's front cover.
2. Locate the power switch (usually labeled ON/OFF/SETUP).
3. Slide the switch to the "SETUP" position. The internal LCD screen will illuminate.
4. Use the navigation buttons (e.g., UP, DOWN, OK) to navigate through the menu options.
5. **Set Date and Time:** It is crucial to set the correct date and time for accurate photo and video timestamps.
6. **Select Capture Mode:** The camera supports various capture modes:
  - **Photo Mode:** Captures still images (12MP resolution).
  - **Video Mode:** Records video clips (720p resolution).

- **Photo + Video Mode:** Captures a still image followed by a video clip.

7. **Adjust Trigger Speed:** The camera features a 1-second trigger speed, ensuring quick capture of moving subjects.
8. **Set Recovery Time:** The camera has a 5-second recovery time between photographs, allowing for multiple captures without excessive duplicates.
9. Once settings are configured, slide the power switch to the "ON" position. The screen will turn off, and the camera will enter monitoring mode.



**CAPTURE MODES**

**Features multiple capture modes - burst, time-lapse and video. 12MP Camera and 720P Video gives you the detail you need but keeps the image file smaller to allow for more photos.**

## Tasco Trail Camera

**The Tasco Low Glow Trail Camera is perfect for a users first or tenth camera. Coming in a package with 2 cameras.**

Image: Visual representation of the camera's capture modes and resolution capabilities.



## QUICK TRIGGER SPEED

1 second trigger speed, 5 second recovery time to next photograph. Allowing you to get multiple photos but not overloading with the same pictures.

**Quick trigger speeds helps to catch photos that are on the move.**

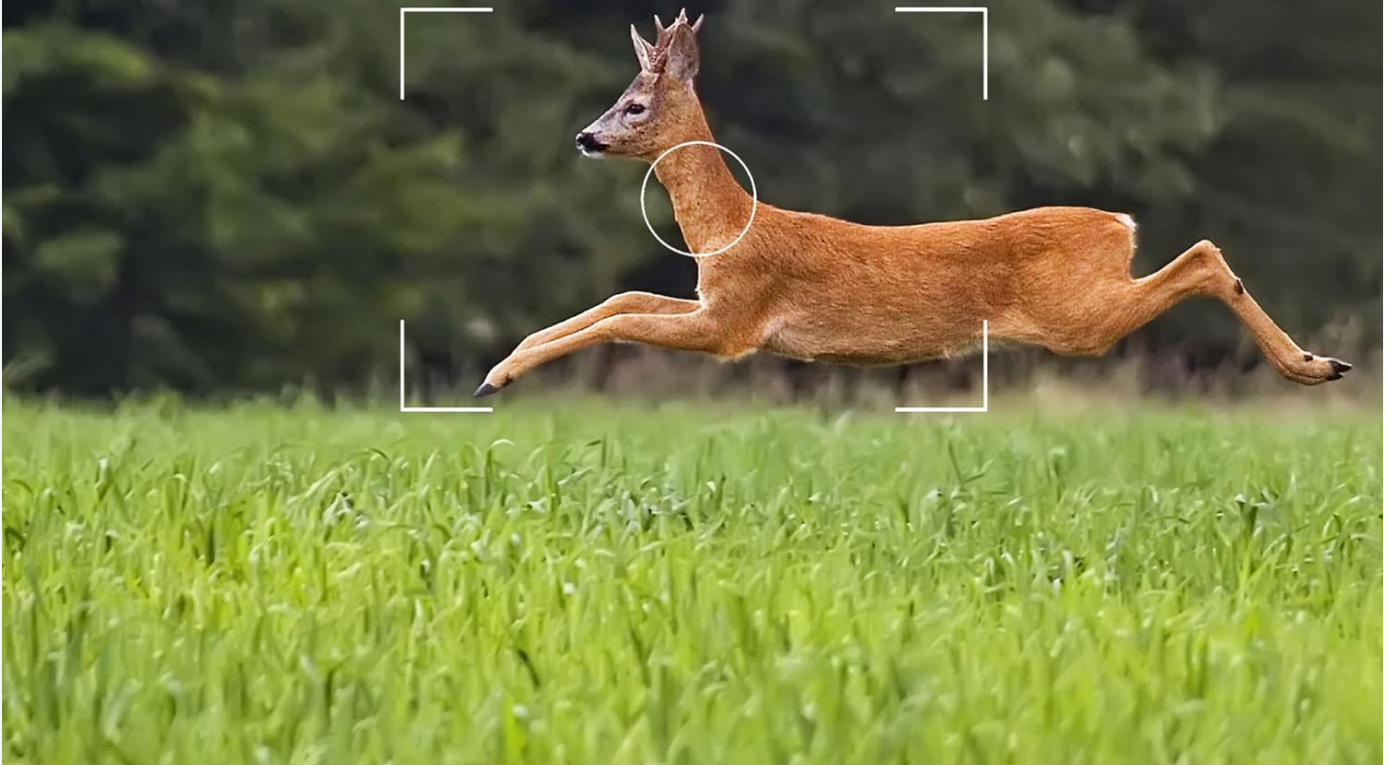


Image: Illustration of the camera's fast trigger speed, ideal for capturing wildlife in motion.

## MAINTENANCE

- **Battery Replacement:** The camera offers approximately 6 months of battery life. Replace all 8 AA batteries when the low battery indicator appears on the screen or when performance degrades. Always replace all batteries at once with new ones.
- **SD Card Management:** Regularly check the SD card capacity. Format the SD card periodically (after backing up important files) to maintain optimal performance and prevent data corruption.
- **Lens Cleaning:** Gently clean the camera lens and infrared LEDs with a soft, lint-free cloth. Avoid abrasive materials or harsh chemicals.
- **Housing Care:** Keep the camera housing clean and free of dirt, dust, and debris. Ensure the latch is securely closed to maintain water resistance.
- **Storage:** When not in use for extended periods, remove batteries and the SD card. Store the camera in a cool, dry place.

## TROUBLESHOOTING

Problem	Possible Cause	Solution
Camera not powering on.	Batteries inserted incorrectly. Batteries drained. Power switch not in ON/SETUP position.	Check battery polarity and reinsert. Replace with fresh AA batteries. Ensure switch is set to ON or SETUP.
No photos/videos captured.	SD card full or corrupted. SD card not inserted correctly. Camera not in ON mode. PIR sensor blocked or range too far.	Format or replace SD card. Reinsert SD card firmly. Slide power switch to ON. Clear obstructions, adjust camera position.
Poor image/video quality.	Dirty lens. Low light conditions (for color images). Subject too far or moving too fast.	Clean the camera lens. Ensure adequate lighting or rely on night vision. Adjust camera placement or settings.
Short battery life.	Low-quality batteries. Frequent captures/videos. Extreme temperatures.	Use high-quality alkaline or lithium batteries. Adjust capture frequency settings. Battery life is reduced in cold weather.

## SPECIFICATIONS

Feature	Detail
Model Number	119219CT2
Image Resolution	12 Megapixels
Video Resolution	720p
Trigger Speed	1 second
Recovery Time	5 seconds
Flash Range	50 feet (Low Glow Infrared)
Night Vision	Yes (Infrared LEDs)
Battery Type	8 x AA (not included)
Battery Life	Up to 6 months (approximate)
SD Card Support	Up to 32GB (not included)
Dimensions (L x W x H)	30.48 x 25.4 x 7.62 cm (approx. 12 x 10 x 3 inches)
Weight	640 g (approx. 1.4 lbs)
Color	Tan

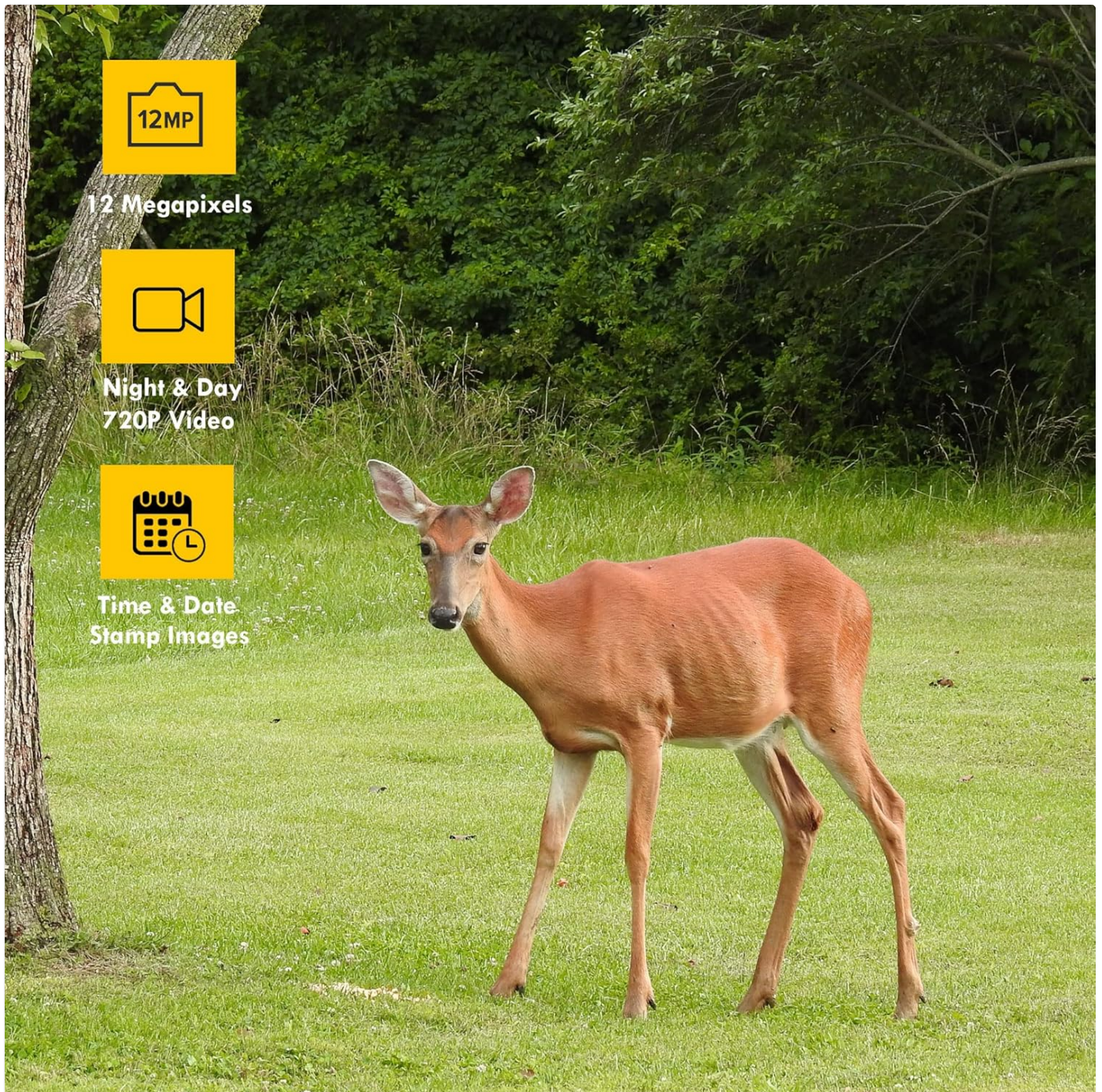


Image: Overview of key camera specifications and features.

## WARRANTY AND SUPPORT

---

For warranty information and technical support, please refer to the official Primos Hunting website or contact their customer service directly. Keep your purchase receipt as proof of purchase for any warranty claims.

**Brand:** Primos Hunting

**Manufacturer:** TASC0

For further assistance, visit the PRIMOS Store on Amazon.

## OFFICIAL PRODUCT VIDEOS

---

No official product videos from the seller were found for this model.



