

SONOFF S-MATE

SONOFF S-MATE Switch Mate Instruction Manual

For use with SONOFF MINI R3/SONOFF R5

1. INTRODUCTION

The SONOFF S-MATE Switch Mate is designed to transform your existing ordinary wall switch into a smart scene switch. It enables wireless control of smart devices without requiring a neutral wire in the mounting box. The S-MATE works in conjunction with SONOFF MINI R3 or other smart switches that feature the eWeLink-Remote gateway function, providing flexible control options for your smart home system.

2. PRODUCT OVERVIEW

SONOFF S-MATE Switch Mate

Make your existing ordinary wall switch be a smart scene switch to control smart devices.



Image: The SONOFF S-MATE Switch Mate module, designed to fit into a standard wall switch box.

The S-MATE is a compact module that connects to traditional wall switches (pulse switch, rocker switch) to enable smart control. It is battery-powered, eliminating the need for a neutral wire, which simplifies installation in various electrical setups.

3. SETUP AND INSTALLATION

3.1 What's in the Box

- SONOFF S-MATE Switch Mate
- User Manual (this document)
- Mounting accessories (if included)

3.2 Wiring Diagram

Wiring Diagram

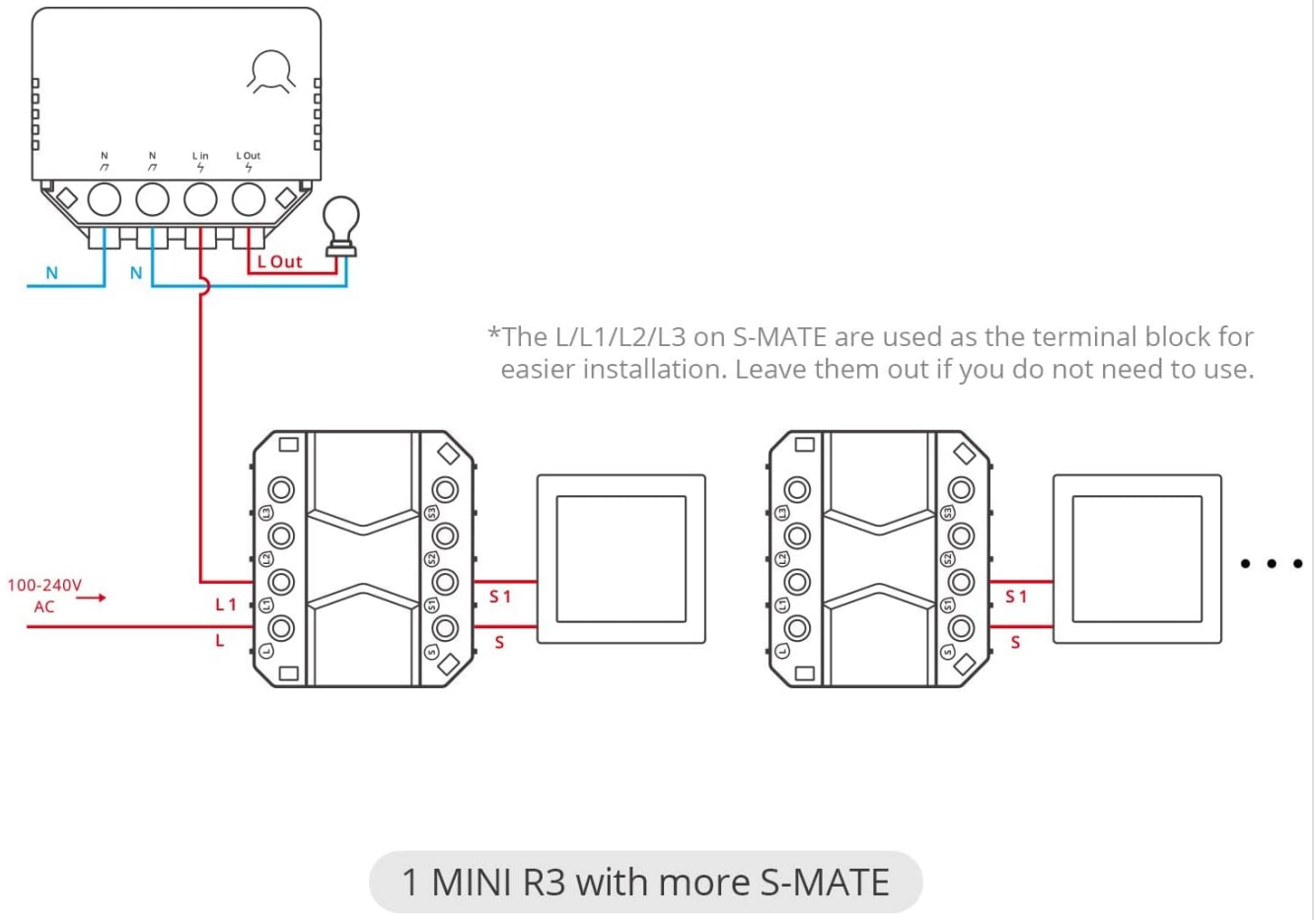


Image: Detailed wiring diagram showing the connection of SONOFF S-MATE to a traditional switch and its communication with a SONOFF MINI R3. Note that L/L1/L2/L3 on S-MATE are used as terminal blocks for easier installation; leave them out if not needed.

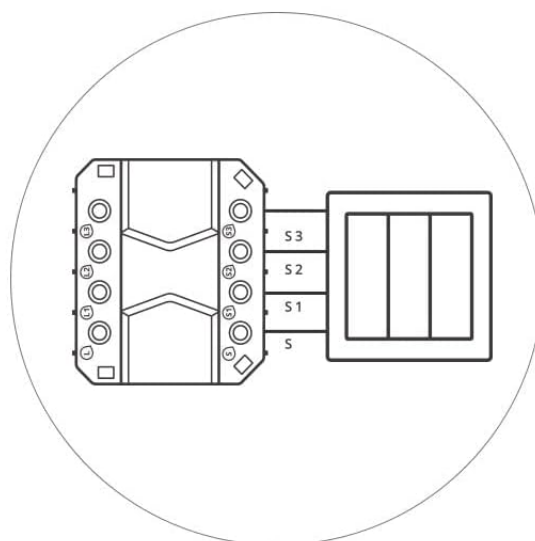
The S-MATE connects to your existing wall switch. It communicates wirelessly with a SONOFF MINI R3 or other eWeLink-Remote gateway devices. Ensure all power is off before performing any wiring.

3.3 Quick Start Guide

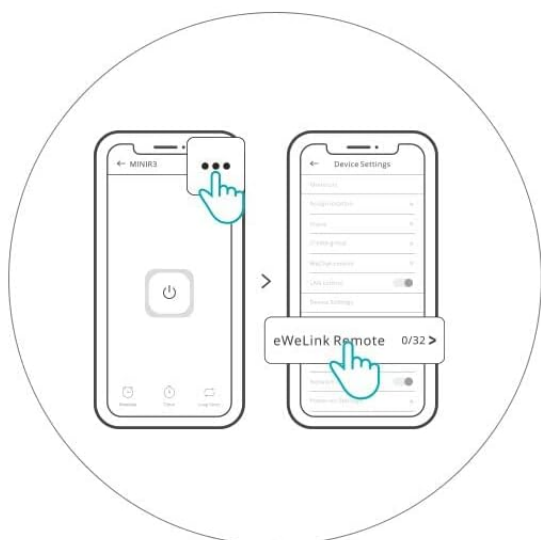
Quick Start



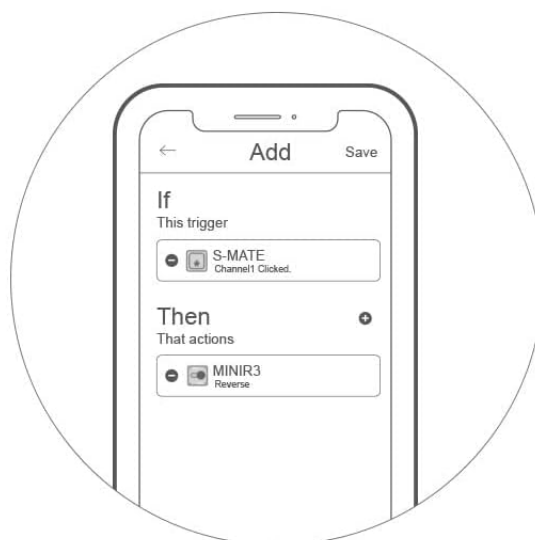
Download eWeLink APP.



Connect S-MATE with your ordinary switch.



Add S-MATE on the setting page of devices with "eWeLink-Remote gateway".



Set the smart scene to trigger other devices.

Image: Visual quick start guide showing the steps from app download to smart scene setup.

1. **Download eWeLink App:** Search for "eWeLink" in your mobile app store and download the application.
2. **Connect S-MATE:** Physically connect the S-MATE module to your ordinary wall switch according to the wiring diagram.
3. **Add S-MATE to eWeLink-Remote Gateway:** In the eWeLink app, navigate to the settings page of your MINI R3 or other eWeLink-Remote gateway device. Add the S-MATE as a remote control.
4. **Set Smart Scene:** Configure smart scenes within the eWeLink app to define what actions the S-MATE will trigger on other smart devices.

Important Note: Update the eWeLink firmware to the latest version before use to ensure full compatibility and functionality.

4. OPERATING INSTRUCTIONS

MINI R3 Works with S-MATE

A "New" smart wall switch solution for your mounting box with no neutral wire.

S-MATE can connect the ordinary 1/2/3-button wall switch which acts as a remote controller. After pairing with MINI R3, MINI R3 can be controlled locally by S-MATE through eWeLink-Remote signal. S-MATE is battery-powered, so it does not require a neutral wire in the mounting box.



Image: Diagram illustrating the wireless communication between SONOFF MINI R3 and S-MATE for eWeLink-Remote control.

After successfully pairing the S-MATE with an eWeLink-Remote gateway device like the MINI R3, you can utilize two primary control methods:

- **Local Control (No Internet):** The S-MATE can directly control devices built into the eWeLink-Remote gateway even when there is no internet connection. This ensures basic functionality remains available.
- **Smart Scene Control (With Internet):** When a network connection is available, the S-MATE can activate other smart devices through predefined smart scenes in the eWeLink app. This allows for complex automation and integration with your broader smart home ecosystem.

S-MATE's Control Ways

After adding the S-MATE to the "eWeLink-Remote gateway" like MINIR3 (and more in the future), it can achieve the following two control ways.

▼ Control the devices built in "eWeLink-Remote gateway" when no Internet is available.

▼ Trigger other smart devices in the smart scene.

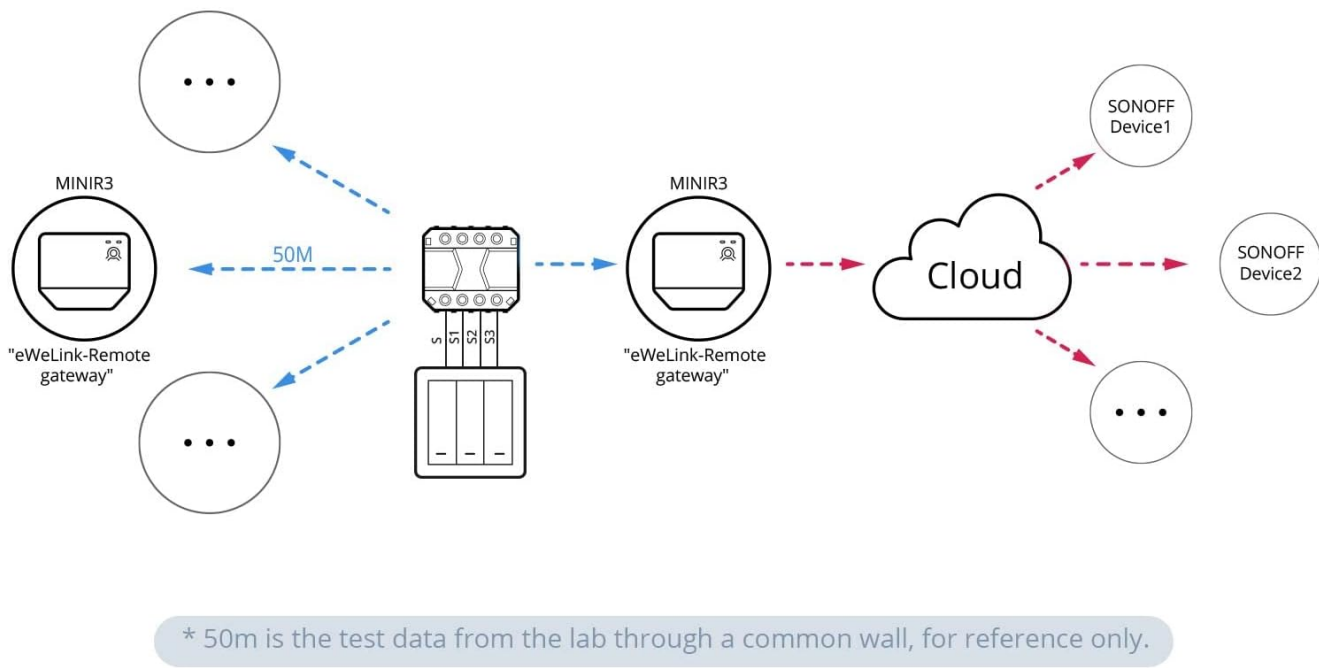


Image: Diagram showing the two control methods of S-MATE: direct control via eWeLink-Remote gateway (up to 50m through a common wall) and cloud-based control for smart scenes.

5. MAINTENANCE

To ensure the longevity and optimal performance of your SONOFF S-MATE, please follow these maintenance guidelines:

- **Keep Dry:** Avoid exposing the device to moisture or humidity.
- **Clean Gently:** Use a soft, dry cloth to clean the device. Do not use harsh chemicals or abrasive cleaners.
- **Avoid Extreme Temperatures:** Do not operate or store the device in environments with extremely high or low temperatures.
- **Battery Replacement:** The S-MATE is battery-powered. If the device becomes unresponsive, consider replacing the internal battery. Refer to the product packaging or SONOFF support for battery specifications.

6. TROUBLESHOOTING

If you encounter issues with your SONOFF S-MATE, please refer to the following common troubleshooting steps:

- **Device Not Responding:**

- Check the physical wiring of the S-MATE to your wall switch. Ensure all connections are secure.
- Verify the battery in the S-MATE. Replace if necessary.
- Ensure the SONOFF MINI R3 or eWeLink-Remote gateway device is powered on and functioning correctly.

- **Pairing Issues:**

- Make sure the eWeLink app and the firmware of your eWeLink-Remote gateway device (e.g., MINI R3) are updated to the latest version.
- Bring the S-MATE closer to the eWeLink-Remote gateway device during the pairing process.
- Follow the pairing instructions in the eWeLink app carefully.

- **Smart Scene Not Triggering:**

- Check your internet connection if the smart scene relies on cloud services.
- Review the smart scene configuration in the eWeLink app to ensure it is set up correctly.
- Verify that the target smart devices are online and responsive.

If problems persist, please contact SONOFF customer support for further assistance.

7. SPECIFICATIONS

Operating Mode	On-off-on
Rated Current	16 Ampere
Operating Voltage	230 Volt
Contact Type	Normally open
Brand	SONOFF
Switch Type	Push button
Terminal	Screw
Material	Copper
Item Dimensions (LxWxH)	5.3 x 4.4 x 2.4 cm
Circuit Type	3 way

8. WARRANTY AND SUPPORT

8.1 Warranty Information

For detailed warranty information regarding your SONOFF S-MATE Switch Mate, please refer to the warranty card included with your product packaging or visit the official SONOFF website. Warranty terms may vary based on region and point of purchase.

8.2 Customer Support

If you require technical assistance, have questions about installation, or need further support, please contact SONOFF customer service through their official website or the contact information provided in your product documentation. You can also visit the [SONOFF Store on Amazon](#) for additional product information and resources.

