

- › [Womier](#) /
- › [Womier K87 75% Hot-Swappable RGB Mechanical Keyboard User Manual](#)

Womier K87

Womier K87 75% Hot-Swappable RGB Mechanical Keyboard User Manual

Model: K87

1. INTRODUCTION

The Womier K87 is a 75% Tenkeyless (TKL) mechanical keyboard designed for gaming and efficient typing. It features a unique botanical theme with an acrylic shell and PBT keycaps. This keyboard offers a hot-swappable design, allowing users to easily change mechanical switches without soldering. It also includes customizable RGB backlighting and under-lighting for a personalized experience.



Image 1.1: The Womier K87 mechanical keyboard showcasing its botanical design and RGB lighting.

2. PACKAGE CONTENTS

Please verify that all items are present in your package:

- Womier K87 Mechanical Keyboard
- USB Type-C Cable
- Keycap Puller
- Switch Puller
- User Manual

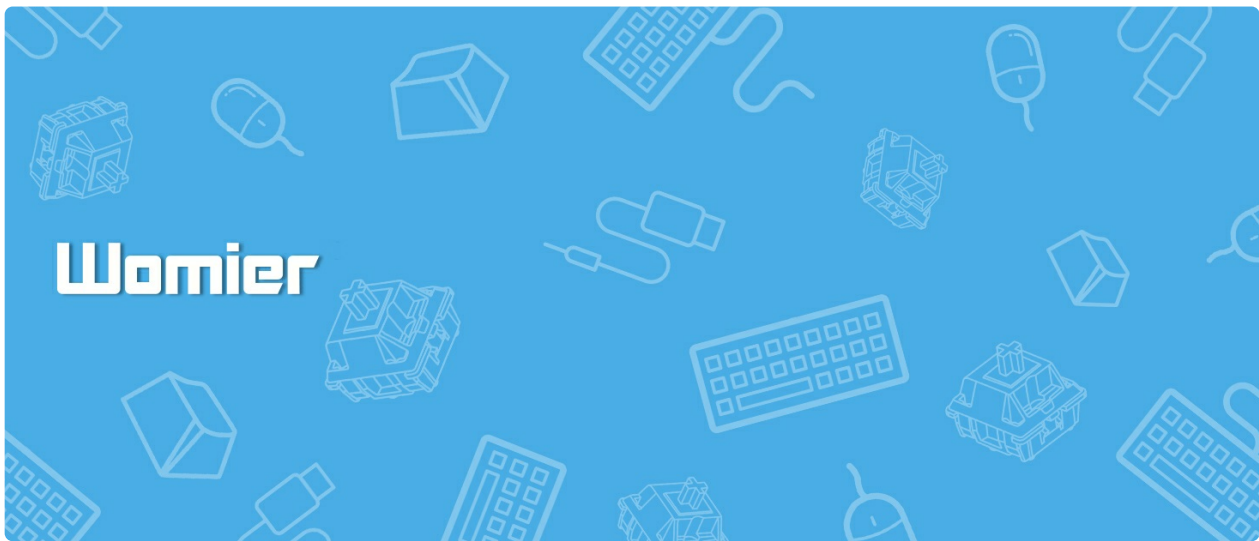


Image 2.1: Contents of the Womier K87 package, including the keyboard and accessories.

3. SETUP

3.1 Connecting the Keyboard

1. Locate the USB Type-C port on the back of the Womier K87 keyboard.
2. Connect one end of the provided USB Type-C cable to the keyboard.
3. Connect the other end of the USB cable to an available USB port on your computer (PC, Mac, Laptop) or gaming console (PS4, PS5, Xbox).
4. The keyboard will automatically be recognized by your operating system. No additional drivers are typically required for basic functionality.

3.2 Initial Power-On

Upon successful connection, the keyboard's RGB lighting will illuminate, indicating it is powered on and ready for use.

4. OPERATING INSTRUCTIONS

4.1 Basic Keyboard Functions

The Womier K87 is a standard 75% layout keyboard. All standard alphanumeric and function keys operate as expected. The keyboard is compatible with Windows, Mac, and various gaming consoles.

4.2 RGB Lighting Customization

The keyboard features fully customizable RGB backlighting and under-lighting. You can adjust lighting effects directly on the keyboard using function key combinations or through dedicated software (for Windows systems).



Image 4.1: Function key combinations for controlling RGB lighting effects.

On-Keyboard Controls:

- **FN + ↑**: Increase backlit brightness (from 0%-100%).
- **FN + ↓**: Decrease backlit brightness (from 0%-100%).
- **FN + ←**: Reduce light efficiency rate.
- **FN + →**: Enhance light efficiency rate.
- **FN + <**: Volume Down.
- **FN + >**: Volume Up.
- **FN + Ctrl**: Control the side light effects (default dynamic rim RGB lights).
- **FN + Backspace**: Press and hold for 5 seconds to turn off backlighting.
- **FN + HOME/End/INS/PGUP/PGDN/Del**: Change the keyboard backlight effects (total 18 types of light effects).

Software Customization:

For advanced customization of lighting modes, macro keys, and usage scenarios, dedicated software is available. This software is currently only compatible with Windows operating systems.

DIY Software Supports

You can customize the lighting modes, Macro keys and using scenarios



Image 4.2: Womier keyboard software interface for customizing lighting and macros.

4.3 Hot-Swappable Switches

The Womier K87 features a hot-swappable PCB, allowing you to easily change mechanical switches without soldering. This provides flexibility to customize your typing experience or replace faulty switches.

Hot-Swappable Function



Image 4.3: Illustration of the hot-swappable switch feature, supporting 3-pin/5-pin switches.

Changing Switches:

1. Gently remove the keycap using the provided keycap puller.
2. Use the switch puller to carefully grip the switch and pull it straight up.
3. Align the pins of the new switch with the holes on the PCB. Ensure the pins are straight to avoid bending.
4. Press the new switch firmly into place until it clicks.
5. Re-attach the keycap.

4.4 Unique Keyboard Structure

The keyboard's unique bottom shell structure is designed to absorb pinging noises and reduce empty sound, enhancing the purity of each keystroke for a satisfying typing experience. The switches are pre-lubricated for a comfortable feel and improved sound.



Image 4.4: Large silicone feet contribute to stability and sound dampening.

5. MAINTENANCE

5.1 Cleaning the Keyboard

Regular cleaning helps maintain the keyboard's performance and appearance.

1. Disconnect the keyboard from your computer.
2. Use the provided brush to remove dust and debris from between the keycaps.
3. For deeper cleaning, remove keycaps using the keycap puller and clean the exposed switches and plate.
4. Wipe the keycaps and keyboard surface with a soft, damp cloth. Avoid harsh chemicals.

5.2 Keycap and Switch Care

The PBT keycaps are durable, but avoid excessive force when removing or installing them. When handling switches, ensure proper alignment to prevent damage to the pins.

6. TROUBLESHOOTING

6.1 Keyboard Not Responding

- Ensure the USB Type-C cable is securely connected to both the keyboard and the computer.
- Try connecting the keyboard to a different USB port on your computer.
- Test the keyboard on another computer to rule out system-specific issues.
- Check if the cable is damaged; try using a different USB Type-C cable if available.

6.2 RGB Lighting Not Working/Incorrect

- Verify that the backlighting is not turned off (FN + Backspace for 5 seconds).
- Cycle through different lighting modes using the FN key combinations (e.g., FN + HOME).
- If using the software, ensure it is running and the settings are applied correctly.
- Ensure the keyboard is receiving sufficient power from the USB port.

6.3 Keys Not Registering or Double-Typing

- Carefully remove the keycap and switch for the affected key.

- Inspect the switch for any visible damage or debris. Clean if necessary.
- Re-insert the switch, ensuring the pins are straight and it is fully seated.
- If the issue persists, try replacing the switch with a known working one (due to the hot-swappable feature).

7. SPECIFICATIONS

Feature	Detail
Brand	Womier
Model Number	K87 Botanical Theme
Keyboard Description	Mechanical Gaming Keyboard
Connectivity Technology	Wired (USB Type-C)
Compatible Devices	Windows 10/8/7/Vista/XP, Limited Mac OS, PS5/PS4, Desktops, Chrome-book, PC, Laptop
Special Features	Backlit, Customizable Display Keys, Ergonomic, Hot-Swappable
Keyboard Backlighting Color Support	RGB (16.8 Million Colors)
Product Dimensions	10 x 2 x 2.7 inches (25.4 x 5.08 x 6.86 cm)
Item Weight	2.4 pounds (1.09 kg)
Switch Type	Red Switch (Gateron, Cherry, etc. compatible)

8. WARRANTY AND SUPPORT

Womier provides responsive after-sales support. For any issues or inquiries, please contact Womier customer service through the platform where the product was purchased or visit the official Womier website for support information.

Please retain your proof of purchase for warranty claims.

9. PRODUCT VIDEOS

9.1 Womier K87 Botanical Theme Keyboard Overview

Your browser does not support the video tag.







Video 9.1: An overview of the Womier K87 Botanical Theme Mechanical Keyboard, highlighting its design and features.

9.2 Womier K87 Botanical Keyboard with Red Switches

Your browser does not support the video tag.

Video 9.2: A demonstration of the Womier K87 Botanical Keyboard, specifically showcasing the Red Switch variant.

Related Documents - K87

	Womier SK71 PRO Wireless Mechanical Keyboard User Manual User manual for the Womier SK71 PRO, a 75% VIA support wireless mechanical keyboard. Includes features, connectivity modes (Bluetooth, 2.4G, Wired), and function key combinations for Windows and Mac.
	Womier V-K66 Mechanical Keyboard User Manual User manual for the Womier V-K66 Mechanical Keyboard, detailing system functions, hotkeys for Windows and Mac, product features, specifications, and driver download information.
	Womier L65 Keyboard User Manual - 60% Wireless Mechanical Keyboard User manual for the Womier L65, a 60% gasket mounted wireless mechanical keyboard with multimedia knob. Learn about Bluetooth, 2.4G, wired modes, indicator lights, knob functions, and custom lighting.
	Womier SK75 TMR Keyboard User Manual: Features, Setup, and Key Combinations Comprehensive user manual for the Womier SK75 TMR 75% Rapid Trigger Wireless Aluminum Magnetic Keyboard. Details FN key combinations for Windows/macOS, battery management, mode settings, and answers common questions.
	Womier RD75 Keyboard User Manual User manual for the Womier RD75, a 75% rapid disassembly QMK/VIA wireless keyboard. Includes connection steps, function keys, lighting effects, battery management, and FAQ.
	Womier Q75 Keyboard VIA Configuration Guide Step-by-step instructions for using the VIA configurator to customize your Womier Q75 keyboard. Learn how to download the JSON file, connect your device, and authorize it for full customization.