

Manuals+

[Q & A](#) | [Deep Search](#) | [Upload](#)

manuals.plus /

> [Daloben](#) /

> [Daloben AN-MR18BA AN-MR20 AKB75855501 LG Voice Magic Remote Control User Manual](#)

Daloben AN-MR18BA AN-MR20 AKB75855501

Daloben AN-MR18BA AN-MR20 AKB75855501 LG Voice Magic Remote Control User Manual

INTRODUCTION

This manual provides detailed instructions for the Daloben AN-MR18BA AN-MR20 AKB75855501 Voice Magic Remote Control. This remote is designed to enhance your viewing experience with LG 4K UHD Smart TVs, offering intuitive mouse-like pointing, a scroll wheel, and voice recognition capabilities.





Image: The Daloben AN-MR18BA AN-MR20 AKB75855501 LG Voice Magic Remote Control, showcasing its ergonomic design and button layout.

COMPATIBILITY

This remote control is compatible with various 2018 LG 4K UHD Smart TV models. Please verify your TV model against the list below:

2018 LG OLED Smart TV Models:

- **B8 Series:** OLED43B8, OLED49B8, OLED50B8, OLED55B8, OLED65B8, OLED75B8, OLED77B8, OLED86B8
- **C8 Series:** OLED43C8PUA, OLED49C8PUA, OLED50C8PUA, OLED55C8PUA, OLED65C8PUA, OLED75C8PUA, OLED77C8PUA, OLED86C8PUA
- **E8 Series:** OLED43E8PUA, OLED49E8PUA, OLED50E8PUA, OLED55E8PUA, OLED65E8PUA, OLED75E8PUA, OLED77E8PUA, OLED86E8PUA
- **W8 Series:** OLED75W8PUA, OLED86W8PUA

2018 LG Super UHD TV Models:

- **SK8000 Series:** 43SK8000PUA, 49SK8000PUA, 50SK8000PUA, 55SK8000PUA, 65SK8000PUA, 75SK8000PUA, 77SK8000PUA, 86SK8000PUA
- **SK8070 Series:** 75SK8070PUA
- **SK9000 Series:** 43SK9000PUA, 49SK9000PUA, 50SK9000PUA, 55SK9000PUA, 65SK9000PUA, 75SK9000PUA, 77SK9000PUA, 86SK9000PUA
- **SK9500 Series:** 65SK9500PUA

2018 LG UHD 4K TV Models:

- **UK6300 Series:** 43UK6300, 49UK6300, 50UK6300, 55UK6300, 65UK6300, 75UK6300, 77UK6300, 86UK6300
- **UK6500 Series:** 43UK6500AUA, 50UK6500AUA, 55UK6500AUA, 65UK6500AUA
- **UK6570 Series:** 70UK6570AUA, 75UK6570AUA, 86UK6570AUA
- **UK7700 Series:** 55UK7700AUB, 65UK7700AUB

COMPATIBLE WITH LG MAGIC REMOTE MODELS



Image: Visual representation of compatibility with various LG Magic Remote models, including AN-MR18BA, AN-MR19BA, and AN-MR20BA.

Battery Installation

The remote control includes a built-in battery. Before first use, locate the protective film on the back of the remote control. Remove this film to reveal a gasket at the battery compartment. Please remove this gasket to activate the battery.

Pairing the Remote

To pair the remote control with your LG Smart TV, follow these steps:

1. Press and hold the **Home** button (🏠) and the **Back** button (↶) simultaneously for 5 seconds to initialize the Magic Remote Control.
2. Point the Magic Remote Control directly at your Smart TV.
3. Press the **Scroll Wheel (OK)** button on the remote control.
4. A message confirming successful connection will appear on your TV screen.

Note: Only one Magic Remote can be paired with your TV at a time. If the TV fails to register the Magic Remote, try again after turning the TV off and then back on.

How to Register (Pair) this Magic Remote

1. Press and Hold down the 🏠 (Home) button and ↶ (Back) button at the same time for 5 seconds to initialize the Magic Remote Control.

2. Point the Magic Remote at your smart TV and then press 🎯 the Wheel (OK) on the remote control. A message will appear after the Magic Remote Control is connected.

⚠️ **Note:** If the TV fails to register the Magic remote, try again after turning the TV off and back on.

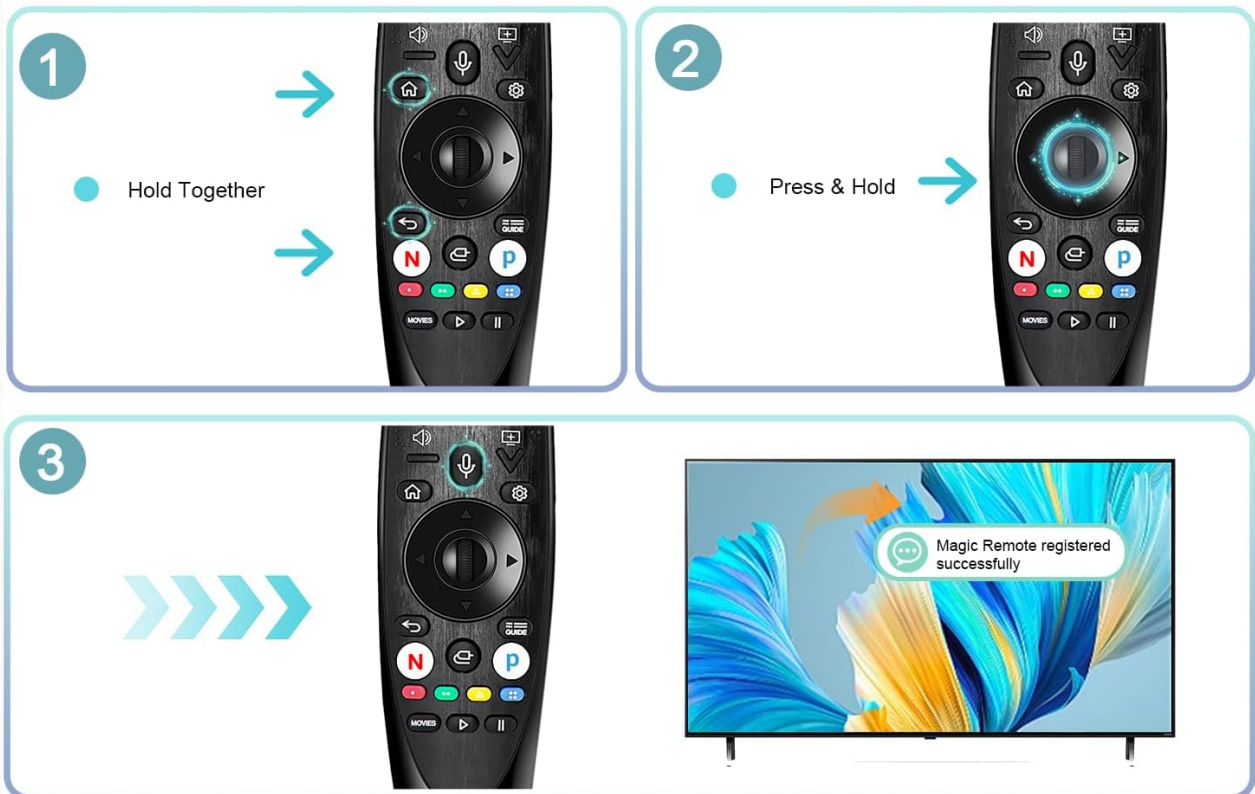


Image: Illustrated guide showing the steps to press and hold the Home and Back buttons, then press the Wheel (OK) button to pair the remote.

OPERATING INSTRUCTIONS

Pointer and Scroll Wheel Function

The central wheel button functions as both a select button and an Air Mouse. To use the pointer, move the remote in the air to guide the cursor on your TV screen. Press the Wheel (OK) button to select items or execute functions. The scroll wheel also allows for easy navigation through menus and web pages.

How to Use Magic Remote with Point, Click Scroll Function



Wheel button  is a select button, also is a Air Mouse, move the pointer to the location you want and press the  Wheel(OK) button to execute the function.



Image: Demonstrates how to use the remote's pointing and scrolling functions, showing hand movements and the on-screen pointer.

Voice Recognition

This remote control features voice search capabilities. Press the dedicated voice button (often indicated by a microphone icon) and speak your commands or search queries into the remote. The TV will process your voice input for navigation, content search, or other functions.



Image: A user holding the remote and using the voice command feature, with a speech bubble indicating "Launch Netflix" on the screen.

MAINTENANCE

To ensure the longevity and optimal performance of your remote control, follow these maintenance guidelines:

- Keep the remote control clean by wiping it with a soft, dry cloth. Avoid using liquid cleaners or abrasive materials.
- Do not expose the remote to extreme temperatures, direct sunlight, or high humidity.
- If the remote will not be used for an extended period, consider removing the batteries to prevent leakage.
- Handle the remote with care to prevent drops or impacts that could damage internal components.

TROUBLESHOOTING

If you encounter issues with your remote control, refer to the following common problems and solutions:

- **Remote Not Responding:**
 - Ensure the battery gasket has been removed and the battery is properly seated.

- Re-attempt the pairing process as described in the "Pairing the Remote" section.
- Turn your TV off and then back on, then try pairing again.
- **Pointer Not Appearing or Moving:**
 - Ensure the remote is pointed directly at the TV.
 - Check for any obstructions between the remote and the TV.
 - Re-pair the remote control.
- **Voice Recognition Not Working:**
 - Ensure you are pressing the voice button while speaking.
 - Speak clearly and at a normal volume.
 - Check your TV's settings to ensure voice recognition is enabled.

SPECIFICATIONS

| Feature | Detail |
|---------------------------------|--|
| Model Number | AN-MR18BA AN-MR20 AKB75855501 |
| Product Dimensions | 7.4 x 2.1 x 0.01 inches |
| Item Weight | 5 ounces |
| Batteries | 2 A batteries (included) |
| Special Feature | Voice Search, Pointer Function, Scroll Wheel |
| Max Number of Supported Devices | 1 |

WARRANTY AND SUPPORT

Daloben offers a 180-day after-sale service for this product. If you have any questions or require assistance with your order, please contact customer support directly. Inquiries will typically receive a response within 12 hours.