

BLNAN 021-U

BLNAN RGB LED Flush Mount Ceiling Light (Model 021-U) Instruction Manual

1. INTRODUCTION

This manual provides detailed instructions for the installation, operation, and maintenance of your BLNAN RGB LED Flush Mount Ceiling Light, Model 021-U. This 13-inch, 24W, 2400LM light fixture offers adjustable color temperature (3000K-6500K) for the main light and a vibrant RGB side ring light, all controllable via a remote. Please read this manual thoroughly before installation and use to ensure proper function and safety.



Image 1.1: BLNAN RGB LED Flush Mount Ceiling Light with remote control and various color options.

2. SAFETY INFORMATION

To reduce the risk of electric shock, fire, or injury, always follow these basic safety precautions:

- **Turn off power:** Always disconnect power at the circuit breaker or fuse box before installing, servicing, or cleaning the fixture.
- **Qualified electrician:** If you are unsure about the installation process, consult a qualified electrician.
- **Grounding:** Ensure the fixture is properly grounded according to local electrical codes.
- **Voltage:** Verify that the supply voltage is compatible with the fixture (120 Volts).
- **Indoor use only:** This fixture is designed for indoor use in dry locations. Do not expose to water or moisture.
- **Do not modify:** Do not attempt to alter or modify the fixture in any way, as this may void the warranty and create safety hazards.
- **Handle with care:** The fixture contains delicate electronic components. Handle with care during installation.

3. PACKAGE CONTENTS

Carefully unpack the box and ensure all items listed below are present and undamaged. If any parts are missing or damaged, contact customer support.

- BLNAN Dimmable Ceiling Light (1 unit)
- Remote Control (1 unit)
- Accessories Package (including wire nuts, mounting screws, wall anchors)
- Instruction Manual (this document)



Image 3.1: Contents included in the BLNAN RGB LED Flush Mount Ceiling Light package.

4. PRODUCT SPECIFICATIONS

Feature	Specification
Model Number	021-U
Dimensions	13"L x 13"W x 0.62"H (33cm x 33cm x 1.57cm)
Wattage	24 Watts
Brightness	2400 Lumens
Color Temperature	3000K-6500K (Dimmable Main Light)
RGB Colors	7 RGB colors + 2 RGB color cycle modes
Material	Plastic
Voltage	120 Volts
Control Method	Remote Control (2.4G)
CRI (Color Rendering Index)	90.00
Average Life	30,000 Hours
Installation Type	Flush Mount (Hardwired)

Special Features

Dimmable, Color Temperature Adjustable, RGB Side Ring Light, Night Light Mode, 30s Off Delay, Memory Function, No Flicker



Image 4.1: High Color Rendering Index (CRI 90).



Image 4.2: Flicker-free illumination for eye comfort.



Image 4.3: Energy-efficient 24W LED equivalent to 2x100W incandescent bulbs.

5. INSTALLATION INSTRUCTIONS

This fixture is designed for quick and easy installation. It is compatible with most standard junction boxes (2.75 inches - 5.4 inches). Always ensure power is OFF before beginning installation.

Tools Required (Not Included):

- Screwdriver
- Wire Strippers
- Electrical Tape (optional)
- Safety Glasses

Installation Steps:

1. **Prepare the Mounting Plate:** Rotate the light fixture to detach the mounting plate from the main body.
2. **Mount the Plate:** Align the mounting plate with your junction box. Secure the plate to the ceiling using the provided screws and wall anchors if necessary.
3. **Connect Wiring:** Hang the light fixture from the mounting plate using the integrated hanging wire rope. Connect the household electrical wires to the fixture's wires using the provided wire nuts. Typically, connect black to black (live), white to white (neutral), and green/bare copper to green (ground). Ensure all connections are secure.
4. **Attach the Fixture:** Carefully push the light fixture up towards the mounting plate, aligning the fixture with the plate. Rotate the fixture to lock it securely into place.

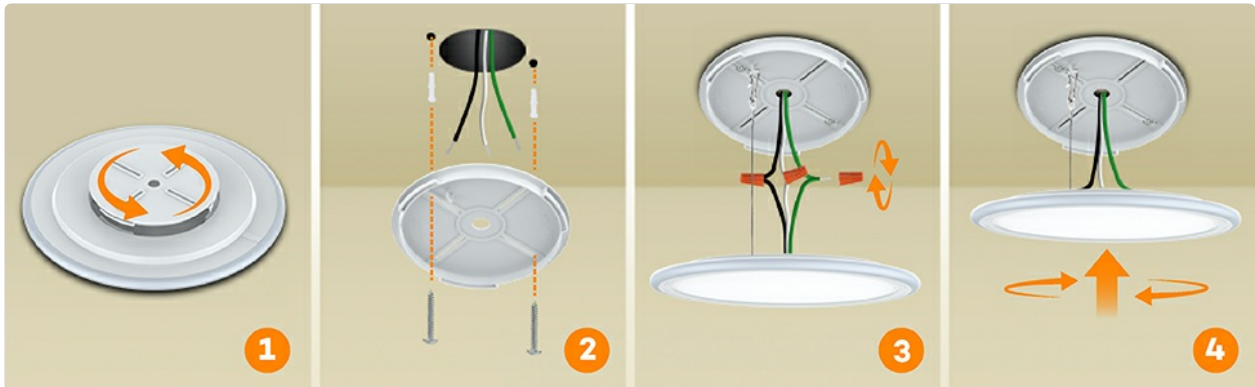


Image 5.1: Visual guide for the 4-step installation process.

After installation, restore power at the circuit breaker and test the light fixture.

6. OPERATING INSTRUCTIONS

The BLNAN RGB LED Flush Mount Ceiling Light is controlled using the included 2.4G remote control. Ensure the remote has working batteries (not included) before use.

24W RGB Ceiling Light with Remote

2.5cm/
0.99inch

33cm / 13inch

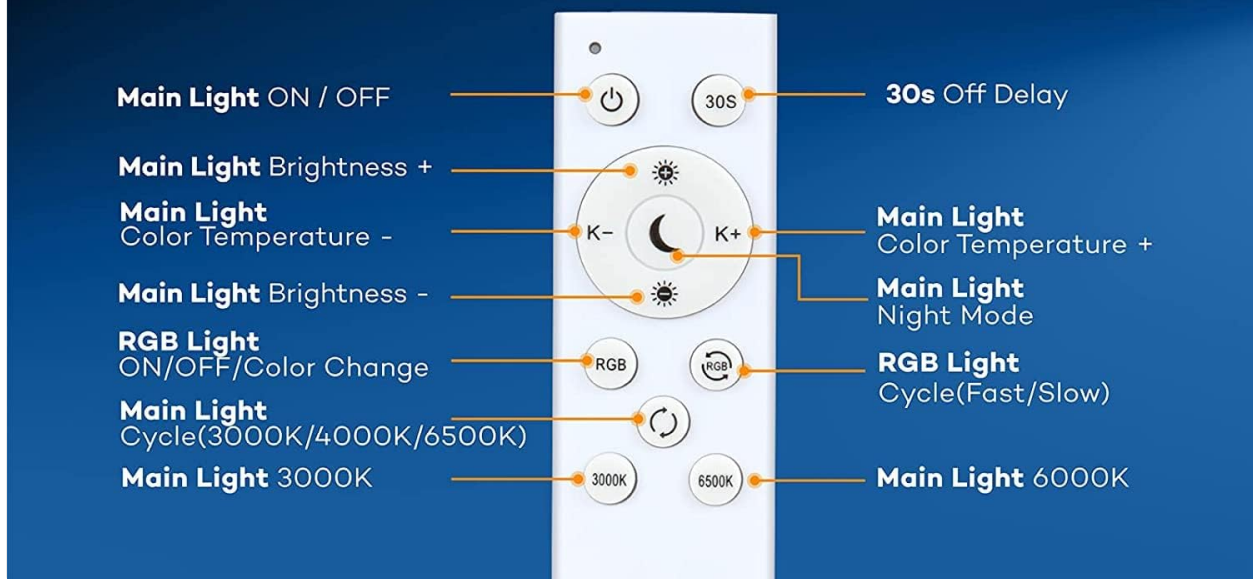


Image 6.1: Remote control button functions.

Remote Control Functions:

- **Power Button ():** Turns the light ON/OFF.
- **30s Off Delay:** Activates a 30-second delay before turning off the light.
- **Main Light Brightness (+/-):** Adjusts the brightness of the main white light (10%-100%).
- **Main Light Color Temperature (K-/K+):** Adjusts the color temperature of the main white light (3000K-6500K).
- **RGB Light ON/OFF/Color Change (RGB button):** Toggles the RGB side light ON/OFF and cycles through the 7 available RGB colors.
- **RGB Light Cycle (⌚):** Initiates RGB color cycling (fast or slow).
- **Main Light Night Mode (🌙):** Activates a soft 3000K white night light mode.
- **Preset Color Temperatures (3000K, 6000K, 6500K):** Direct selection for specific main light color temperatures.

Lighting Modes:

The fixture offers four distinct lighting modes:

- **RGB Mood Lighting:** The RGB side ring light illuminates in various colors, creating an ambient atmosphere.
- **Dimmable White Light (3000K-6500K):** The main light provides adjustable brightness and color temperature from warm white to cool white.
- **RGB Light and Dimmable White Light:** Both the RGB side light and the main white light are active simultaneously.
- **Night Light:** A soft 3000K white light, ideal for low-light situations or children's rooms.



Image 6.2: The four available lighting modes.

Memory Function:

The light fixture retains the last settings (brightness, color temperature, RGB mode) if it is turned on for more than 1 minute and then turned off for more than 10 seconds. This ensures your preferred settings are recalled upon next use.



Image 6.3: Adjusting main light color temperature and brightness.

7. MAINTENANCE

To maintain the appearance and performance of your BLNAN ceiling light, follow these simple maintenance guidelines:

- **Cleaning:** Ensure the power is off before cleaning. Wipe the fixture with a soft, dry, or slightly damp cloth. Do not use abrasive cleaners, solvents, or polishes, as these can damage the finish or electrical components.
- **Bulb Replacement:** The LED light source is integrated and not user-replaceable. The fixture has an average life of 30,000 hours.
- **Inspection:** Periodically check for any loose wiring or damage. If any issues are found, discontinue use and consult a qualified electrician.

8. TROUBLESHOOTING

If you encounter issues with your BLNAN RGB LED Flush Mount Ceiling Light, refer to the following common problems and solutions:

Problem	Possible Cause	Solution
Light does not turn on.	No power, loose wiring, faulty switch.	Check circuit breaker. Ensure all wire connections are secure. Test wall switch.
Remote control not working.	Dead batteries, remote not paired, interference.	Replace remote batteries. To re-pair: 1. Turn off light switch. 2. Hold down the power button on the remote. 3. Turn the light switch back on while still holding the remote button. Continue holding until the light responds.
RGB light not functioning.	Internal defect, remote issue.	Try re-pairing the remote as described above. If the issue persists, contact customer support.
Light flickers or dims unexpectedly.	Incompatible dimmer switch, unstable power supply.	This light is not compatible with external dimmer switches. Ensure it is connected to a standard ON/OFF switch. Check household wiring for stability.

9. WARRANTY AND SUPPORT

Your BLNAN RGB LED Flush Mount Ceiling Light comes with a manufacturer's warranty. The specific terms and duration of the warranty (Extended or Limited) are detailed in the warranty card included with your purchase. Please retain your proof of purchase for warranty claims.

For technical support, troubleshooting assistance, or warranty inquiries, please refer to the contact information provided on the warranty card or visit the official BLNAN website.

Optional protection plans are available for purchase separately, offering extended coverage beyond the manufacturer's warranty. These plans typically cover product defects and malfunctions for an additional period (e.g., 3-Year or 4-Year Protection Plan).