

## Manuals+

[Q & A](#) | [Deep Search](#) | [Upload](#)

manuals.plus /

> [Braun](#) /

> [Braun 13-21 mm Adjustable Hair Comb Instruction Manual for Trimmer Models 5513, 5514, 5515, 5516, 5517, 5518, 5541, 5542, 5544](#)

**Braun BR-81634455**

# Braun 13-21 mm Adjustable Hair Comb Instruction Manual

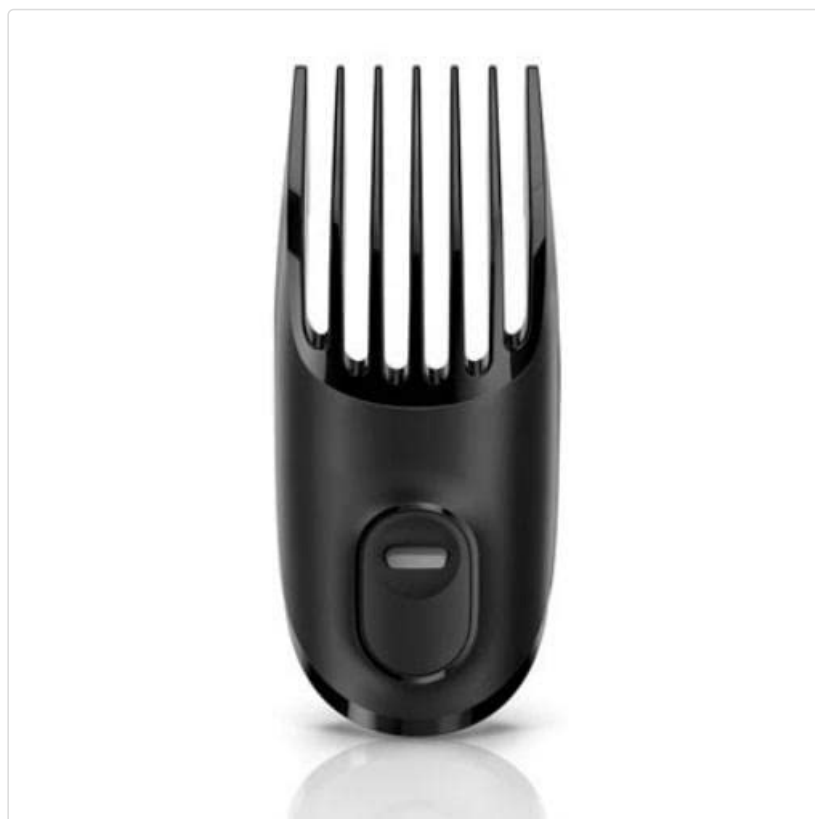
For Trimmer Models: 5513, 5514, 5515, 5516, 5517, 5518, 5541, 5542, 5544

## 1. INTRODUCTION

This manual provides essential instructions for the proper use, setup, and maintenance of your Braun 13-21 mm Adjustable Hair Comb. Please read this manual thoroughly before first use to ensure optimal performance and longevity of the product. Keep this manual for future reference.

## 2. PRODUCT OVERVIEW

The Braun 13-21 mm Adjustable Hair Comb is an accessory designed to provide precise hair length adjustments for compatible Braun trimmers. It allows for a cutting length range of 13 to 21 millimeters, enabling versatile styling options.



**Figure 1:** Braun 13-21 mm Adjustable Hair Comb. This image displays the black plastic comb attachment with multiple tines and a central adjustment mechanism.

### 3. COMPATIBILITY

---

This adjustable hair comb is specifically designed for use with the following Braun trimmer models:

- Type 5513
- Type 5514
- Type 5515
- Type 5516
- Type 5517
- Type 5518
- Type 5541
- Type 5542
- Type 5544

**Important: Ensure your trimmer model is listed above to guarantee proper fit and function. Using this comb with incompatible models may result in damage to the comb or trimmer, or unsatisfactory trimming results.**

### 4. SETUP AND ATTACHMENT

---

1. **Ensure Trimmer is Off:** Before attaching or detaching the comb, always ensure your Braun trimmer is switched off and unplugged from any power source.
2. **Align the Comb:** Position the adjustable hair comb over the trimmer head, aligning the attachment points on the comb with the corresponding slots on the trimmer.
3. **Secure Attachment:** Gently push the comb onto the trimmer head until it clicks securely into place. Do not force the attachment. A secure fit is crucial for consistent trimming.
4. **Verify Attachment:** Lightly tug on the comb to ensure it is firmly attached and does not wobble.

### 5. OPERATING INSTRUCTIONS

---

This comb allows for hair length adjustments between 13 mm and 21 mm.

1. **Adjusting Length:** Locate the adjustment mechanism on the side of the comb. Slide the mechanism up or down to select your desired hair length setting within the 13-21 mm range. The selected length should be clearly indicated.
2. **Trimming:**
  - Turn on your Braun trimmer.
  - Hold the trimmer with the comb attachment flat against the skin.
  - Move the trimmer slowly and steadily against the direction of hair growth.
  - For best results, ensure the comb remains in full contact with the skin throughout the trimming process.
3. **Detaching the Comb:** After use, switch off and unplug the trimmer. Gently press any release buttons (if present on your trimmer model) or carefully pull the comb away from the trimmer head.

## 6. MAINTENANCE AND CLEANING

---

Regular cleaning ensures the comb remains hygienic and functions correctly.

1. **Remove Hair:** After each use, detach the comb from the trimmer. Use a small brush (often supplied with trimmers) to remove any trapped hairs from between the comb tines.
2. **Rinse (if applicable):** If your trimmer and comb are designed for wet use or rinsing, you may rinse the comb under running water. Ensure it is completely dry before reattaching or storing. Refer to your trimmer's manual for specific cleaning instructions.
3. **Storage:** Store the comb in a clean, dry place, away from direct sunlight and extreme temperatures.

## 7. TROUBLESHOOTING

---

- **Comb does not fit the trimmer:** Double-check the compatibility list in Section 3. This comb is designed for specific Braun trimmer models. If your model is not listed, the comb is not compatible.
- **Inconsistent trimming results:** Ensure the comb is securely attached and the desired length setting is locked. Move the trimmer slowly and evenly against the hair growth. Clean the comb and trimmer blades regularly.
- **Comb feels loose:** Re-attach the comb, ensuring it clicks firmly into place. If it continues to feel loose, inspect the attachment points on both the comb and the trimmer for any damage.

## 8. SPECIFICATIONS

---

- **Brand:** Braun
- **Model Number:** BR-81634455
- **Adjustment Range:** 13-21 mm
- **Compatible Trimmer Types:** 5513, 5514, 5515, 5516, 5517, 5518, 5541, 5542, 5544
- **Package Dimensions:** 5.31 x 4.17 x 1.54 inches
- **Item Weight:** 1.06 ounces

## 9. WARRANTY AND SUPPORT

---

For warranty information or technical support regarding your Braun 13-21 mm Adjustable Hair Comb, please refer to the documentation provided with your original Braun trimmer or visit the official Braun website. You may also contact Braun customer service directly for assistance.

**Braun Official Website:** [www.braun.com](http://www.braun.com)