

Manuals+

[Q & A](#) | [Deep Search](#) | [Upload](#)

[manuals.plus](#) /

- › [Sparkleiot](#) /
- › [Sparkleiot Zigbee WiFi Mini Smart Switch Relay Module User Manual](#)

Sparkleiot XHD02S

Sparkleiot Zigbee WiFi Mini Smart Switch Relay Module

MODEL: XHD02S

Introduction

This instruction manual provides detailed information on the installation, operation, and maintenance of your Sparkleiot Zigbee WiFi Mini Smart Switch Relay Module. This device is designed to integrate seamlessly into your smart home ecosystem, offering convenient control over your lighting and appliances through Zigbee and Wi-Fi connectivity. Key features include two-way control support, compatibility with popular voice assistants like Amazon Alexa and Google Home, and app control via Smart Life or Tuya applications. A Zigbee hub is required for the smart switch's full functionality.

Specifications

Feature	Detail
Product Dimensions	1.85 x 1.69 x 0.98 inches; 1.45 ounces
Item Model Number	XHD02S
Operation Mode	ON-NONE-OFF
Current Rating	16 Amps
Operating Voltage	220 Volts
Contact Type	Normally Open
Connector Type	Clamp
Circuit Type	2-way, Rocker Switch
Contact Material	Plastic

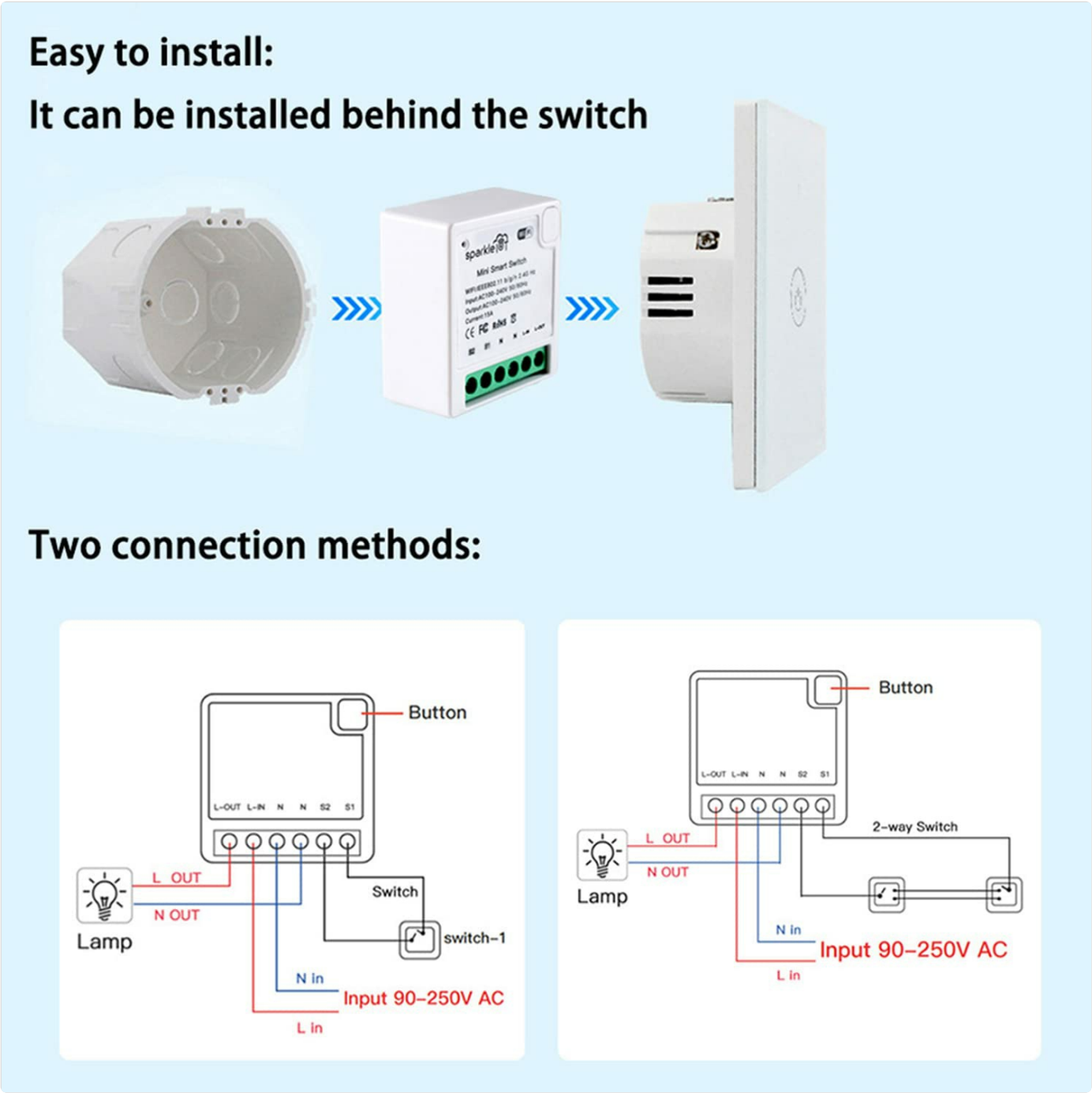
Setup & Installation

The Sparkleiot Mini Smart Switch is designed for easy installation, fitting behind existing switches. Ensure power is off

before beginning installation.

Wiring Instructions

Refer to the diagrams below for proper wiring. The module supports two-way control, allowing you to retain manual control of your existing switch after installation.



Support two-way control

Connect two parallel switches

Connect the series switch

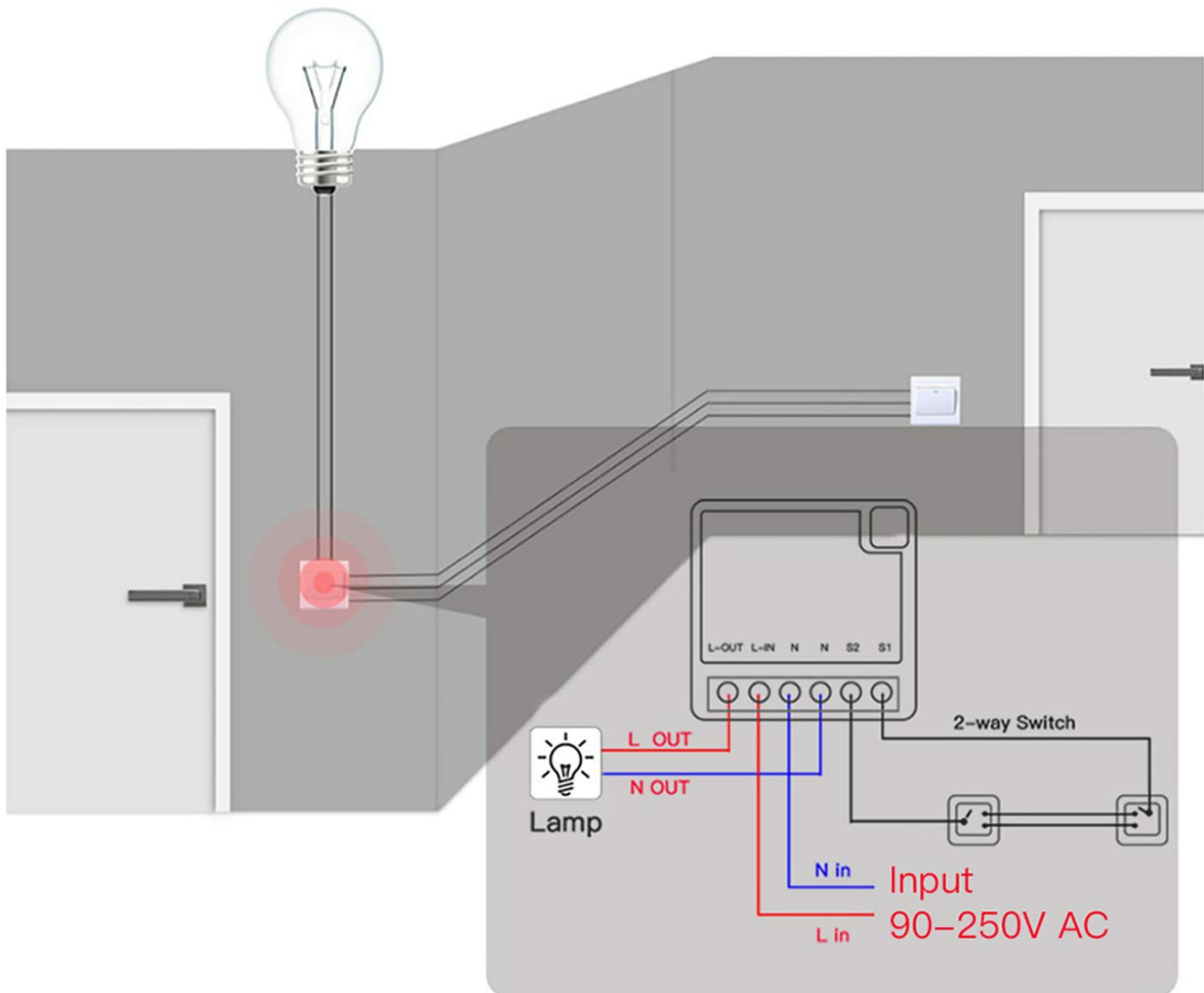


Figure 2: Detailed wiring diagram for implementing two-way control, showing connections for a lamp and two physical switches to the smart module.

Pairing with a Zigbee Hub

This device requires a Zigbee hub (e.g., Tuya/Smart Life Hub, eWeLink Zigbee Bridge) for smart functionality. Follow these steps to pair your device:

1. Ensure your Zigbee hub is powered on and in pairing mode.
2. Power on the smart switch. To enter pairing mode, turn the connected light/appliance on and off three times rapidly using the physical switch. The light should blink to indicate pairing mode.
3. Initiate device discovery on your Zigbee hub's application (e.g., Smart Life App).
4. Once discovered, the device will appear in your app. You can then rename it and assign it to a room.

Video: This video demonstrates the pairing process of the Zigbee Smart Switch with a compatible hub, including how to activate pairing mode by cycling the power.

Operating Instructions

App Control

After successful pairing, you can control your smart switch using the Smart Life or Tuya app on your smartphone. This allows for remote control, setting timers, schedules, and countdowns.



Figure 3: Screenshot of the mobile application interface, demonstrating remote control capabilities for the smart switch.



Figure 4: Overview of the smart home ecosystem, illustrating how the Zigbee switch connects to a Wi-Fi router for app and voice control.

Voice Control

The smart switch is compatible with Amazon Alexa and Google Home. Once linked through your Zigbee hub's app, you can use voice commands to control your connected devices.

- **Example Commands:**
- "Alexa, turn on [device name]."
- "Hey Google, turn off [device name]."



Figure 5: Visual representation of voice control functionality with Amazon Alexa and Google Home, showing example commands.

Video: This video demonstrates the voice control capabilities of the WiFi Mini Smart Switch using Amazon Alexa, showing how to turn a light on and off with voice commands.

Maintenance

To ensure the longevity and optimal performance of your Sparkleiot Mini Smart Switch, follow these general maintenance guidelines:

- **Cleaning:** Use a soft, dry cloth to clean the device. Do not use liquid cleaners or aerosol sprays.
- **Environment:** Keep the device in a dry environment, away from excessive moisture, dust, and extreme temperatures.
- **Power:** Disconnect power before performing any maintenance or cleaning.

Troubleshooting



If you encounter issues with your smart switch, try the following troubleshooting steps:





- **Device Not Responding:**
 - Check if the device is powered on and properly wired.
 - Ensure your Zigbee hub is online and connected to the internet.
 - Verify the device is within range of your Zigbee hub.
- **Cannot Pair Device:**
 - Ensure the device is in pairing mode (power cycle 3 times).
 - Check if your Zigbee hub is in discovery mode.
 - Try resetting the device (refer to pairing instructions for power cycling).
 - Ensure there are no strong interferences from other wireless devices.
- **Voice Control Issues:**
 - Confirm the device is correctly linked in your Alexa or Google Home app.
 - Check your internet connection and the status of your voice assistant device.
 - Try re-discovering devices through your voice assistant app.

Warranty & Support

For detailed warranty information and further technical support, please refer to the official user manual PDF available online or contact Sparkleiot customer service.
You can access the User Manual (PDF) [here](#).

Related Documents - XHD02S

	<p>Sparkleiot Zigbee Smart Plug User Manual</p> <p>User manual for the Sparkleiot Zigbee Smart Plug, detailing features, product description, indicator LED meanings, factory reset, and connection guides for Amazon Alexa, Samsung SmartThings, and Philips Hue.</p>
	<p>Sparkleiot XH-32S WiFi Module User Manual</p> <p>Comprehensive user manual for the Sparkleiot XH-32S WiFi module, detailing its features, specifications, interface definitions, and recommended PCB design for optimal performance. Covers technical parameters, power consumption, Wi-Fi RF characteristics, and FCC compliance information.</p>

	<p>SparkleIoT XH-S3E 2.4G WiFi Module Datasheet & User Manual</p> <p>Comprehensive technical datasheet and user manual for the SparkleIoT XH-S3E 2.4G WiFi module. Covers features, specifications, interface definitions, electrical characteristics, power consumption, RF performance, PCB design recommendations, and FCC compliance.</p>
	<p>SparkleIoT Smart Plug User Manual - Setup and Control</p> <p>Comprehensive user manual for the SparkleIoT smart plug, detailing setup with Amazon Alexa, Samsung SmartThings, Philips Hue, and other Zigbee 3.0 hubs. Includes troubleshooting and indicator light explanations.</p>
	<p>SparkleIoT ESP-32S WiFi Module: User Manual and Technical Specifications</p> <p>Comprehensive user manual and technical specifications for the SparkleIoT ESP-32S WiFi module, detailing its features, interface, electrical characteristics, RF performance, and PCB design recommendations.</p>
	<p>ESP-12F Wi-Fi Module Datasheet and User Manual SparkleIoT</p> <p>Comprehensive technical datasheet and user manual for the SparkleIoT ESP-12F Wi-Fi module, covering features, specifications, interface definitions, schematics, and FCC compliance.</p>