

SUPVAN ADE15*6m

SUPVAN KATASYMBOL ADE15*6m Thermal Labels Instruction Manual for E10/E11/E16 Printers

Brand: SUPVAN | Model: ADE15*6m (Compatible with E10/E11/E16 Label Printers)

1. INTRODUCTION AND PRODUCT OVERVIEW

This manual provides comprehensive instructions for the SUPVAN KATASYMBOL ADE15*6m self-adhesive thermal labels, designed for use with SUPVAN E10, E11, and E16 label printers. These labels offer a durable and versatile solution for various labeling needs.

Key Features:

- **Compatibility:** Specifically designed for SUPVAN E10, E11, and E16 label printers.
- **Dimensions:** 15mm width x 6m length, continuous roll.
- **Durability:** Features a multilayer design and synthetic materials, providing waterproof, oil-resistant, and high/low temperature resistance. Labels maintain integrity for over 5 years.
- **Versatile Application:** Suitable for home, office, school, kitchen, and baby product labeling.
- **Thermal Printing:** Utilizes thermal technology, eliminating the need for ink or toner, ensuring cost-effective and high-definition printing.
- **Ease of Use:** The companion app automatically detects label type and size, offering over 150 templates, 40 fonts, and 700 icons for customization.



Figure 1: SUPVAN KATASYMBOL ADE15*6m label roll, featuring black text on a blue background, 15mm wide and 6m long.

Kompatibel med SUPVAN E10/E11/E16 Etikettskrivare



Figure 2: An assortment of SUPVAN E10, E11, and E16 label printers displayed with various compatible label rolls, highlighting the range of available colors and patterns.

2. SETUP: LOADING THE LABEL ROLL

Follow these steps to correctly load the label roll into your compatible SUPVAN label printer (E10, E11, or E16).

1. Open the label compartment cover on your SUPVAN label printer.
2. Insert the ADE15*6m label roll into the compartment, ensuring the label material feeds out smoothly and the print side is facing the print head.
3. Close the compartment cover securely. The printer should automatically detect the label type and size.
4. **Important Note:** Do not remove the small sticker on the back of the label roll, as this contains the NFC chip for automatic detection.

per rulle 6m

15 mm x 6 m



15 mm

Kontinuerliga etiketter

Figure 3: A hand demonstrating the correct way to insert a SUPVAN label roll into the label printer's compartment, ensuring proper alignment for printing.

3. OPERATING INSTRUCTIONS

Utilize the SUPVAN companion app to design and print your labels. The app offers extensive customization options.

3.1. App Features and Customization

- Access over 150 pre-designed templates for various applications.
- Choose from more than 40 fonts to personalize your text.

- Enhance labels with over 700 icons and graphics.
- The app automatically recognizes the label roll size and type upon insertion.

3.2. Printing and Application

1. Design your label using the SUPVAN app on your smartphone or tablet.
2. Connect your device to the label printer via Bluetooth.
3. Initiate the print command from the app.
4. Carefully peel the printed label from its backing and apply it to a clean, dry surface.



Figure 4: Examples of SUPVAN labels used for organizing items in a home (toys, storage bins) and office (document sorting, desk organization), demonstrating versatile application.

Lämplig för skolor Säkert Material



Figure 5: Children in a classroom setting with SUPVAN labels on notebooks, rulers, and lunchboxes, illustrating the labels' suitability for school applications and safe material.

Multiple Custom Print Templates

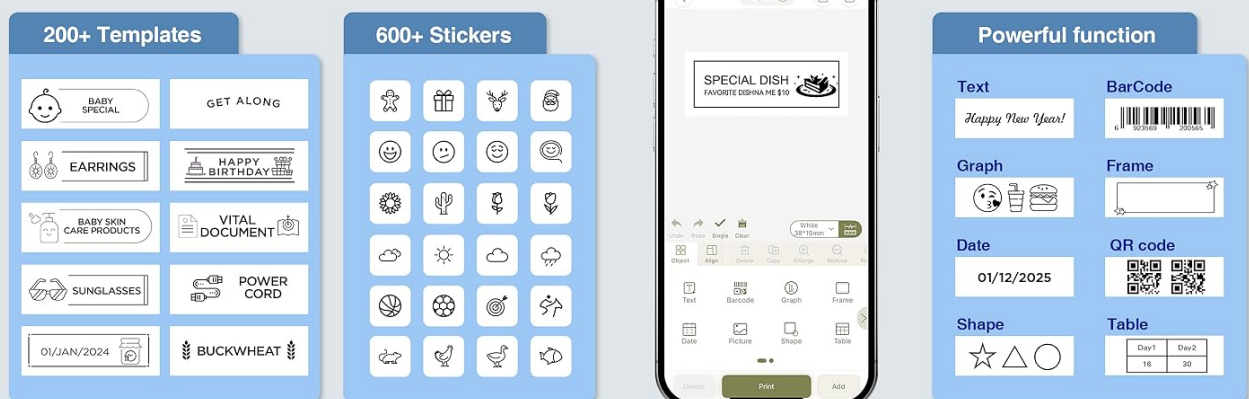


Figure 6: A visual representation of the SUPVAN app's interface, showcasing a wide array of custom print templates, stickers, and powerful functions like text, barcode, QR code, and date options for label creation.

4. MAINTENANCE AND DURABILITY

SUPVAN thermal labels are engineered for longevity and resistance to common environmental factors.

- **Waterproof:** Labels resist water damage, making them suitable for items exposed to moisture.
- **Oil-Resistant:** The material prevents smudging or degradation when exposed to oils, ideal for kitchen use.
- **Temperature Resistance:** Designed to withstand both high and low temperatures, ensuring adhesion and readability in various conditions.
- **Strong Adhesion:** Labels adhere firmly to surfaces and leave no residue upon removal.
- **Longevity:** Expected life of 5+ years under normal conditions.



Vattentät



Oljetålig



Tydligt tryck



Inga rester

Figure 7: A collage demonstrating the durability of SUPVAN labels, showing them being washed (waterproof), applied to an oil bottle (oil-resistant), maintaining clear print on food containers, and leaving no residue upon removal.

4.1. Durability in Action

Your browser does not support the video tag.

Video 1: This video demonstrates the waterproof and oil-resistant properties of SUPVAN labels. Labels applied to shampoo bottles remain intact and legible even when exposed to water and soap, highlighting their durability for bathroom and kitchen environments.

Your browser does not support the video tag.

Video 2: This video illustrates the resilience of SUPVAN labels on baby bottles. The labels withstand steam sterilization and wiping, demonstrating their suitability for items requiring frequent cleaning and exposure to heat, while remaining legible and securely attached.

Your browser does not support the video tag.

Video 3: This video showcases SUPVAN labels used on kitchen storage jars. It highlights their ability to resist moisture and smudging, even when exposed to condensation or handling, making them ideal for organizing pantry items and spices.

Your browser does not support the video tag.

Video 4: This video demonstrates the application of SUPVAN labels for organizing stationery and office supplies. It shows how labels can be easily applied and removed from various containers, providing clear and durable identification for school or office use.

5. TROUBLESHOOTING

If you encounter any issues with your SUPVAN labels or printer, consider the following general troubleshooting steps:

- **Label Not Detected:** Ensure the label roll is correctly inserted and the NFC sticker on the back of the roll has not been removed or damaged.
- **Poor Print Quality:** Check if the label roll is properly seated. Ensure the printer's print head is clean (refer to your printer's manual for cleaning instructions).
- **Adhesion Issues:** Ensure the surface where the label is applied is clean, dry, and smooth. Avoid applying labels to textured or oily surfaces.
- **App Connectivity:** Verify your label printer is powered on and Bluetooth is enabled on your device. Restart both the app and the printer if connection issues persist.

6. PRODUCT SPECIFICATIONS

SUPVAN KATASYMBOL ADE15*6m Label Specifications

Feature	Detail
Brand	SUPVAN
Model Number	ADE15*6m
Product Dimensions	4.98 x 1.5 x 4.98 cm; 10 g
Color	Black on Blue
Shape	Rectangular (Continuous)
Material Type	Paper (Synthetic)
Number of Items	1 Roll
Size	15 mm x 6 m
Ink Color	Black (Thermal Print)
Finish Type	Adhesive
Compatibility	SUPVAN E10/E11/E16 Label Printers

Etiketter i olika storlekar och färger



Figure 8: An illustration showcasing the variety of SUPVAN label sizes and designs available, including the 15mm x 6m continuous labels, and different pre-cut options for diverse labeling needs.

7. WARRANTY INFORMATION





For specific warranty details regarding your SUPVAN labels or compatible label printer, please refer to the documentation provided with your label printer or visit the official SUPVAN website. Generally, SUPVAN products are manufactured to high-quality standards and are supported by the manufacturer's warranty against defects.



8. CUSTOMER SUPPORT

If you require further assistance or have questions not covered in this manual, please contact SUPVAN customer support through the following channels:

- Visit the official SUPVAN website for FAQs and support resources: [SUPVAN Store on Amazon](#)
- Refer to the contact information provided in your product packaging.

Related Documents - ADE15*6m

	<p>SUPVAN KATASYMBOL E16 Bluetooth Label Maker User Manual & Specifications</p> <p>Comprehensive guide to the SUPVAN KATASYMBOL E16 Bluetooth label maker, covering setup, app connection, printing, troubleshooting, safety information, and product specifications.</p>
	<p>SUPVAN E10 Label Maker: User Guide and Specifications</p> <p>A comprehensive guide to the SUPVAN E10 Bluetooth label maker, covering setup, usage, app integration, troubleshooting, and safety information.</p>
	<p>SUPVAN E10 Label Maker: User Guide and Specifications</p> <p>Comprehensive guide to the SUPVAN E10 label maker, covering setup, app usage, printing, troubleshooting, safety, specifications, and available label types.</p>
	<p>Supvan E10 Thermal Printer User Manual - Setup, Operation, and Specifications</p> <p>Comprehensive user manual for the Supvan E10 Thermal Printer, covering packing list, setup, Bluetooth connectivity, precautions, special attention, and technical specifications. Learn how to operate your Supvan E10 printer.</p>

	<p>SUPVAN Katasymbol T50M Pro Label Printer User Manual</p> <p>Comprehensive user manual for the SUPVAN Katasymbol T50M Pro Bluetooth label printer, covering setup, operation, features, maintenance, troubleshooting, and safety information.</p>
	<p>SUPVAN E10 Thermal Printer User Guide</p> <p>Comprehensive user guide for the SUPVAN E10 Mini Bluetooth Label Printer, detailing setup, operation, features, specifications, troubleshooting, safety, and warranty information.</p>