

Manuals+

[Q & A](#) | [Deep Search](#) | [Upload](#)

Manuals.plus /

- › [XENX](#) /
- › XENX P3-1060B Graphic Drawing Tablet User Manual

XENX P3-1060B

XENX P3-1060B Graphic Drawing Tablet User Manual

Model: P3-1060B

1. INTRODUCTION

This manual provides detailed instructions for the setup, operation, and maintenance of your XENX P3-1060B Graphic Drawing Tablet. The P3-1060B features a 10 x 6.22 inch active drawing area, a battery-free pen with 8192 pressure levels, and 10 customizable shortcut keys. It is compatible with Windows, macOS, and Android operating systems, making it suitable for various creative and professional applications.

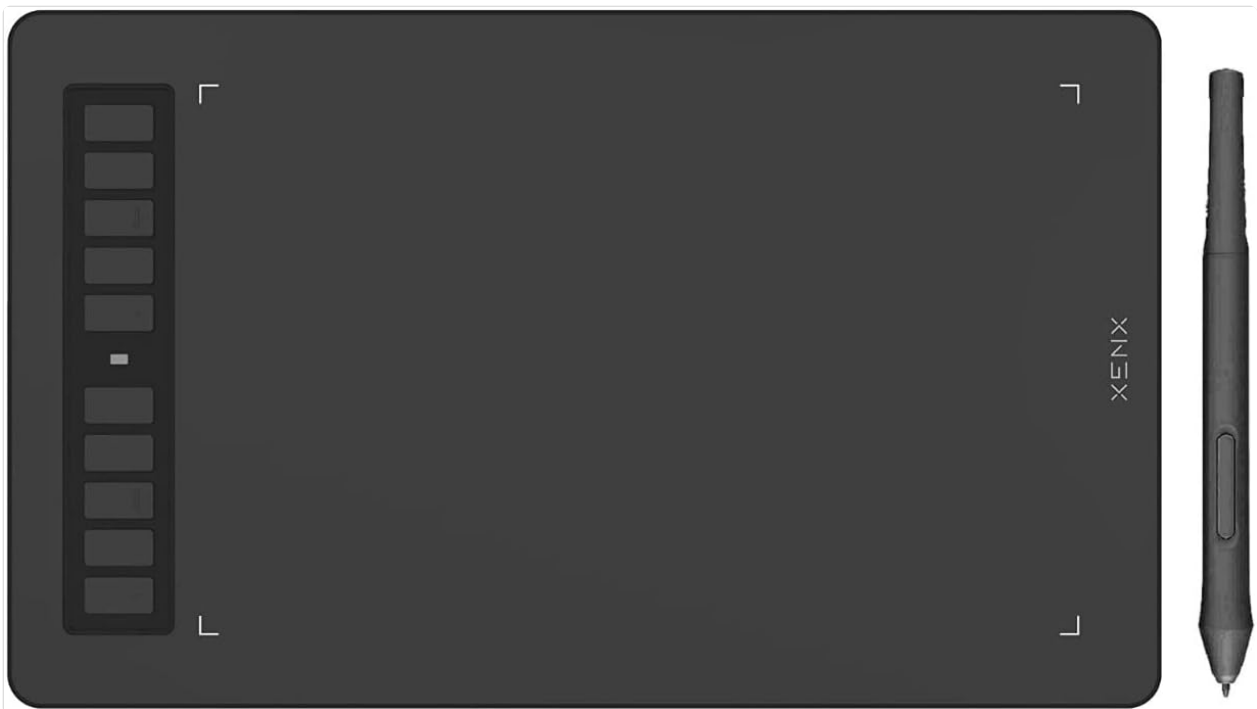


Image 1.1: The XENX P3-1060B Graphic Drawing Tablet with its battery-free pen.



Image 1.2: The XENX P3-1060B tablet highlighting its 10 x 6.22 inch active drawing area.

2. PACKAGE CONTENTS

Verify that all items are present in the package:

- XENX P3-1060B Graphic Drawing Tablet
- Battery-Free Pen
- USB Cable
- Pen Nibs (replacement)
- Nib Remover Tool
- Quick Start Guide



How to use XENX Devices on Android phone?

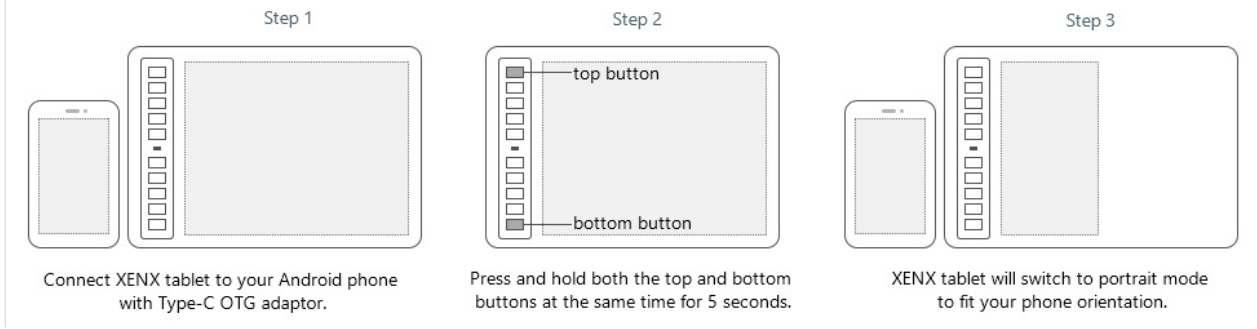


Image 2.1: Contents included in the XENX P3-1060B package.

3. SETUP

3.1 Driver Installation (Windows/macOS)

1. **Uninstall Existing Drivers:** If you have previously installed drivers for other graphic tablets, uninstall them before proceeding.
2. **Download Driver:** Visit the official XENX website (refer to the Quick Start Guide for the URL) and download the latest driver for your operating system (Windows 7 or later, macOS 10.12 or later).
3. **Install Driver:** Run the downloaded installer and follow the on-screen instructions. It is recommended to temporarily disable antivirus software during installation.
4. **Restart Computer:** After installation, restart your computer to ensure the driver is properly loaded.

3.2 Connecting the Tablet

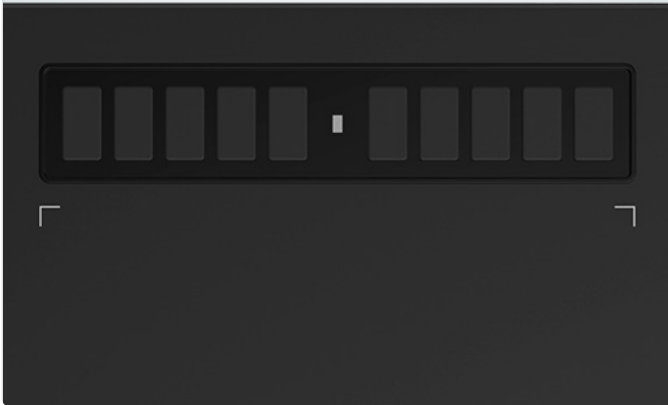
Connect the XENX P3-1060B tablet to your computer or Android device using the provided USB cable.

- **For Windows/macOS:** Plug the USB cable into an available USB port on your computer. The tablet should be recognized automatically after driver installation.
- **For Android Devices (Android 6.0 or later):** Use a Type-C OTG adapter (not included) to connect the tablet to your Android phone or tablet. The device is plug-and-play for Android.

10

Customizable shortcut keys

With Xenx Tablet Driver installed, you can customize the 10 on-tablet buttons to your favourite shortcuts. These shortcuts can be configured and saved per application.



8192 Levels

Pressure Sensitivity Battery-free pen

Our battery-free pen embedded with highly accurate pressure sensor that generates real 8K levels of pen pressure. Xenx P3-1060B captures 266 sets of pen coordinates and pressure data per second.



Image 3.1: The XENX P3-1060B tablet demonstrating compatibility with various operating systems.

3.3 Android Device Orientation

To adjust the tablet's orientation for portrait mode on Android devices:

1. Connect the XENX tablet to your Android phone using a Type-C OTG adapter.
2. Press and hold both the top and bottom shortcut buttons on the tablet simultaneously for 5 seconds.
3. The XENX tablet will switch to portrait mode to fit your phone's orientation.



Image 3.2: Step-by-step guide for using the XENX tablet with Android devices, including orientation adjustment.

4. OPERATING INSTRUCTIONS

4.1 Battery-Free Pen

The XENX P3-1060B comes with a battery-free pen that utilizes 8192 levels of pressure sensitivity. This allows for precise control over line thickness and opacity in supported software. The pen also features two customizable side buttons.

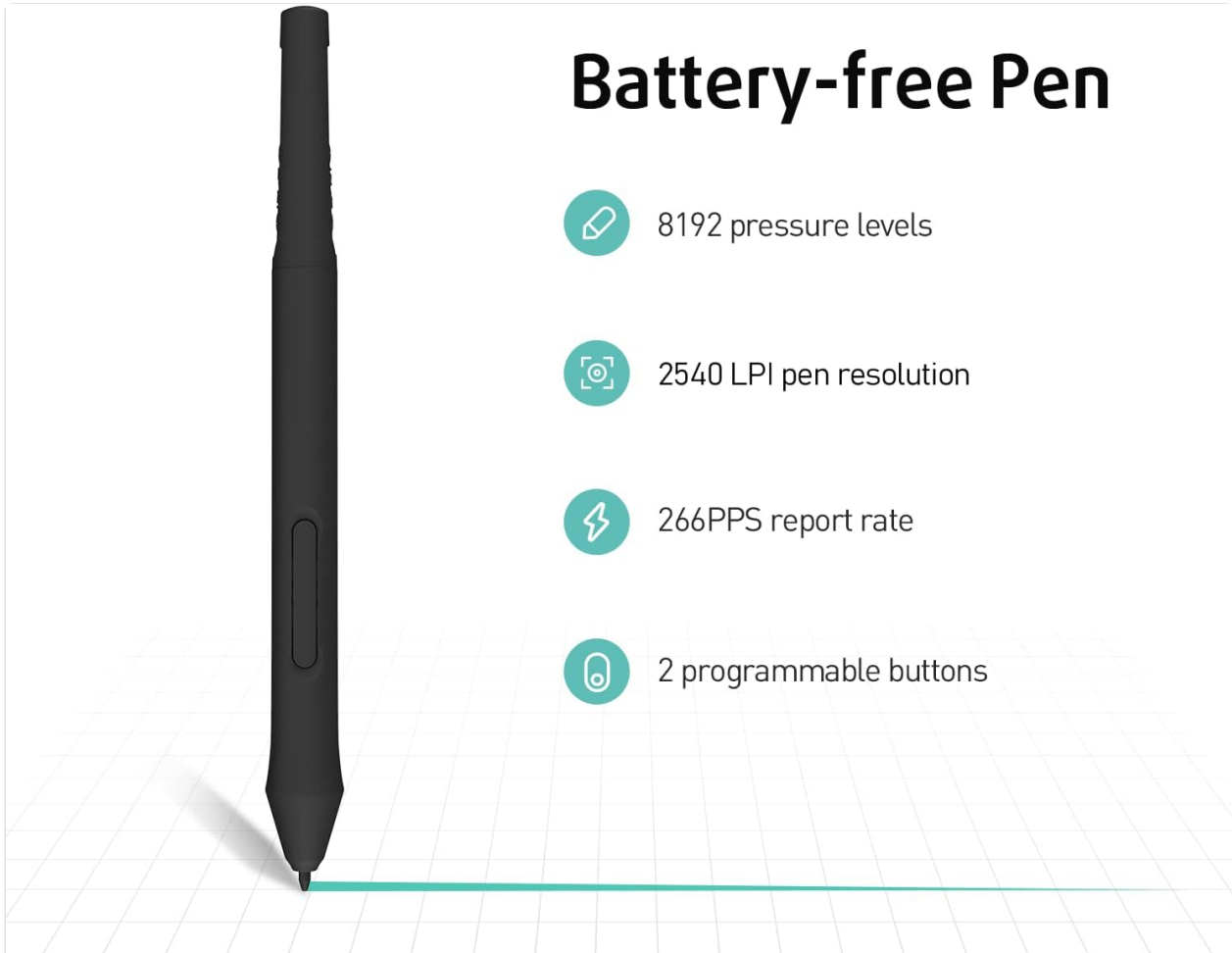


Image 4.1: Detailed view of the XENX battery-free pen and its features.

4.2 Customizable Shortcut Keys

The tablet features 10 physical shortcut keys on the left side. With the XENX Tablet Driver installed, you can customize these buttons to your preferred shortcuts for various applications. These settings can be configured and saved per application, enhancing workflow efficiency.

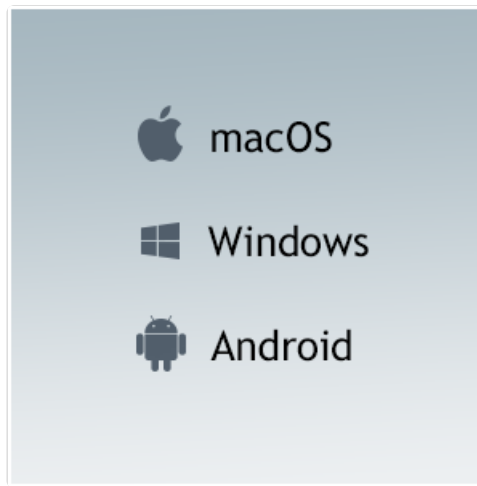


Image 4.2: Illustration of the 10 customizable shortcut keys on the tablet.

4.3 Drawing Area and Rotation

The tablet offers a generous 10 x 6.22 inch active drawing area. The drawing surface has a fine texture designed to provide a comfortable and natural drawing experience, similar to drawing on paper. The tablet can be rotated 180 degrees to accommodate both right-handed and left-handed users, allowing the shortcut keys to be positioned on either side.

Rotating drawing board

You can rotate your drawing board according to your needs

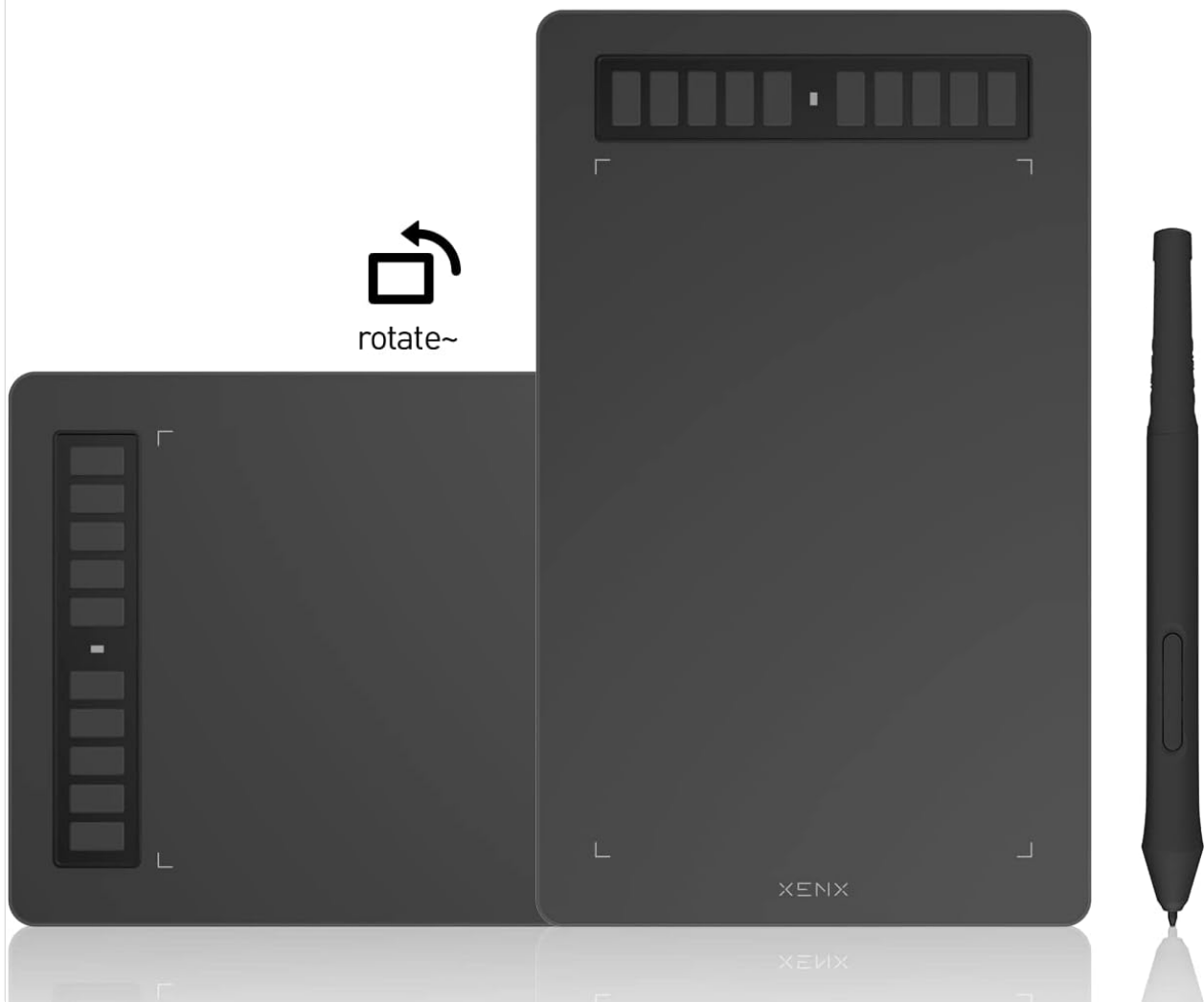


Image 4.3: The XENX P3-1060B tablet demonstrating its rotation capability.

Applicable to multiple scenarios



Dress designing



Painting illustration



Animation design



Industrial design



Network teaching



Handwritten endorsement



Image 4.4: The XENX P3-1060B tablet in use with a laptop, showcasing its versatility.

4.4 Software Compatibility

The XENX P3-1060B is compatible with most major graphics software on Windows and macOS, including but not limited to Adobe Photoshop, Illustrator, Clip Studio Paint, Krita, and GIMP. For Android devices, it supports various drawing and design applications.

5. MAINTENANCE

5.1 Cleaning the Tablet and Pen

To maintain optimal performance and appearance:

- Use a soft, dry, lint-free cloth to gently wipe the tablet surface and pen.
- Avoid using harsh chemicals, abrasive cleaners, or solvents, as these can damage the device.
- Do not spray cleaners directly onto the tablet or pen.

5.2 Pen Nib Replacement

Over time, the pen nib may wear down. Replace it when necessary to ensure consistent performance:

1. Use the nib remover tool (included in the package) to gently pull out the old nib from the pen.
2. Insert a new replacement nib firmly into the pen until it clicks into place.
3. Ensure the nib is securely seated before resuming use.

6. TROUBLESHOOTING

6.1 Common Issues and Solutions

- **Pen Not Responding:**

- Ensure the tablet is properly connected to your device.
- Verify that the driver is correctly installed and running. Try reinstalling the driver if necessary.
- Check if the pen nib is worn out and replace it if needed.
- Test the tablet on a different USB port or computer to rule out port or system issues.

- **Driver Installation Failure:**

- Temporarily disable antivirus software during installation.
- Ensure all previous tablet drivers are uninstalled.
- Download the latest driver directly from the official XENX website.

- **Inaccurate Pen Movement:**

- Recalibrate the pen in the tablet driver settings.
- Ensure there are no electromagnetic interferences near the tablet.

- **Shortcut Keys Not Working:**

- Ensure the XENX driver is installed and running.
- Check the driver settings to confirm the keys are properly configured.
- Note that shortcut keys may not be fully functional on all Android applications or devices.

7. SPECIFICATIONS

Feature	Specification
Model Number	P3-1060B
Active Area	10 x 6.22 inches (252.8 x 158 mm)
Pressure Sensitivity	8192 Levels
Report Rate	266 PPS (Pen Coordinates and Pressure Data per Second)
Pen Resolution	2540 LPI
Shortcut Keys	10 Customizable Keys
Connectivity	USB
Operating System Compatibility	Windows 7 or later, macOS 10.12 or later, Android 6.0 or later
Product Dimensions	13.19 x 7.99 x 3.35 inches

Item Weight	12.8 ounces
-------------	-------------

8. WARRANTY AND SUPPORT

XENX products are designed for reliability and performance. For specific warranty details, please refer to the warranty card included in your product packaging or visit the official XENX website. Keep your purchase receipt as proof of purchase for warranty claims.

For technical support, driver downloads, or further assistance, please visit the official XENX support page or contact XENX customer service. You can find contact information on the XENX website or through the 'Visit the XENX Store' link on the product's retail page.

Online Resources: [Visit the XENX Store on Amazon](#)