

Manuals+

[Q & A](#) | [Deep Search](#) | [Upload](#)

[manuals.plus](#) /

- › [ABASK](#) /
- › [Abask Dual 1080p FHD Dash Cam User Manual](#)

ABASK Dual 1080p Dash Cam

Abask Dual 1080p FHD Dash Cam User Manual

Model: Dual 1080p Dash Cam

INTRODUCTION

Thank you for choosing the Abask Dual 1080p FHD Dash Cam. This device is designed to provide reliable video recording of your journeys, offering both front and rear camera coverage. Please read this manual carefully to ensure proper installation, operation, and maintenance of your dash cam.



Image: The Abask Dual 1080p Dash Cam highlighting its key features such as 1080p video recording, G-sensor, loop recording, parking monitor, and audio recording.

PACKAGE CONTENTS

Verify that all items are present in your package:

- Abask Dual 1080p FHD Dash Cam (Main Unit)
- Rear Camera (Waterproof)
- Suction Cup Mount
- Car Charger
- USB Cable
- User Manual
- 32GB MicroSD Card (pre-inserted)



Image: A visual representation of the Abask Dash Cam package contents, including the main unit, rear camera, cables, mount, and manual.

PRODUCT OVERVIEW

The Abask Dual 1080p FHD Dash Cam features a compact design with a 3-inch LCD screen for real-time viewing and menu navigation. It includes a front camera with a 170-degree wide-angle lens and a rear camera with a 150-degree wide-angle lens, providing comprehensive coverage.



Image: The main Abask Dual 1080p Dash Cam unit with its suction cup mount, alongside the smaller waterproof rear camera.

Main Unit Features:

- **3-inch LCD Screen:** For live view, playback, and settings adjustment.
- **Front Camera Lens:** Records 1080p FHD video with a 170-degree wide-angle view.
- **Control Buttons:** Power, Menu, Up, Down, OK buttons for navigation.
- **MicroSD Card Slot:** Supports up to 32GB MicroSD cards (32GB card included).
- **USB Port:** For power and data transfer.
- **Rear Camera Input:** Connects the rear camera.



Image: Close-up of the Abask Dash Cam's 3-inch LCD screen displaying a road view.

SETUP AND INSTALLATION

1. Insert MicroSD Card:

Ensure the dash cam is powered off. Insert the provided 32GB MicroSD card into the card slot until it clicks into place. The card is pre-inserted in some packages.



Image: A MicroSD card being inserted into the side slot of the Abask Dash Cam.

2. Mount the Front Camera:

1. Clean the windshield area where you intend to mount the dash cam.
2. Attach the suction cup mount to the dash cam.
3. Press the suction cup firmly against the windshield and lock it in place.
4. Adjust the camera angle to ensure a clear view of the road ahead.

3. Install the Rear Camera:

The rear camera can be installed either inside the vehicle (e.g., on the rear windshield) or outside (e.g., near the license plate). Ensure the cable is routed safely and discreetly.

1. Connect the rear camera cable to the main dash cam unit.
2. Route the cable along the vehicle's headliner and A-pillars to the rear of the car.

3. Mount the rear camera in the desired location, ensuring a clear view.

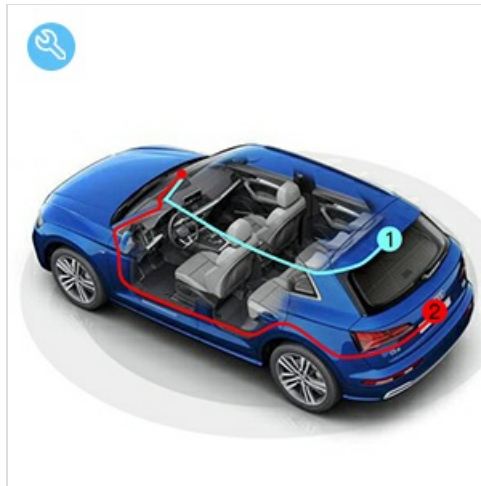


Image: A diagram illustrating the recommended cable routing for the front and rear dash cameras within a car's interior.

4. Power Connection:

Plug the car charger into your vehicle's cigarette lighter socket and connect the other end to the dash cam's USB port. The dash cam will automatically power on and begin recording when the vehicle starts.

OPERATING INSTRUCTIONS

Basic Operation:

- **Power On/Off:** The dash cam powers on automatically with vehicle ignition and powers off when the ignition is turned off. You can also manually power it on/off by pressing and holding the Power button.
- **Recording:** Once powered on, the dash cam automatically starts recording. A red indicator light or icon on the screen typically indicates recording is active.
- **Menu Navigation:** Press the 'Menu' button to access settings. Use 'Up' and 'Down' buttons to navigate and 'OK' to select.
- **Mode Switching:** The dash cam typically has video recording, photo, and playback modes. Use the 'Mode' button (if available) or menu options to switch between them.

Date and Time Setting:

It is important to set the correct date and time for accurate video timestamps. Access this setting through the menu.

FEATURES EXPLAINED

Dual 1080p FHD Recording:

The dash cam records simultaneously from both the front and rear cameras in Full HD 1080p resolution, capturing detailed footage of events happening around your vehicle.



Image: A split image showing a car from the front and rear, indicating simultaneous 1080p recording by both dash cam lenses.

Wide Angle Lenses:

The front camera offers a 170-degree wide-angle view, and the rear camera provides a 150-degree view, minimizing blind spots and covering multiple lanes of traffic.

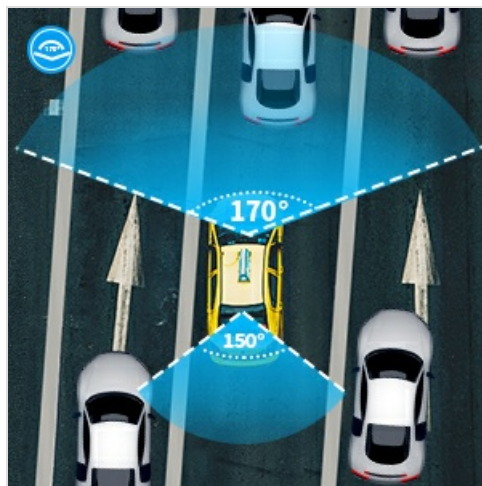


Image: An aerial view diagram of a car on a multi-lane road, illustrating the 170-degree front and 150-degree rear wide-angle coverage of the dash cam.

G-Sensor (Gravity Sensor):

The built-in G-sensor detects sudden movements or impacts (e.g., collisions). When triggered, it automatically locks the current video segment, preventing it from being overwritten by loop recording. This ensures critical footage is preserved as evidence.



Image: Two cars after a minor collision, with a lock icon overlay, symbolizing the G-sensor automatically protecting video footage of the incident.

Loop Recording:

The dash cam records video in continuous loops (e.g., 1, 3, or 5-minute segments). When the MicroSD card is full, the oldest unprotected files are automatically overwritten to make space for new recordings. This ensures continuous recording without manual intervention.



Image: A dash cam screen with a filmstrip of various driving scenes, illustrating the continuous loop recording function.

Parking Monitor & Motion Detection:

When enabled, the parking monitor feature uses motion detection to automatically start recording if movement or impact is detected around your parked vehicle. This provides surveillance even when the car is off. For continuous 24-hour parking monitoring, a dedicated hardwire kit (sold separately) is required.



Image: A dash cam inside a car recording a person with a flashlight, demonstrating the parking monitor's ability to detect and record suspicious activity.

Super Night Vision & WDR:

Equipped with advanced optical sensors and Wide Dynamic Range (WDR) technology, the dash cam enhances video clarity in low-light conditions, ensuring details are visible during night driving or in adverse weather.

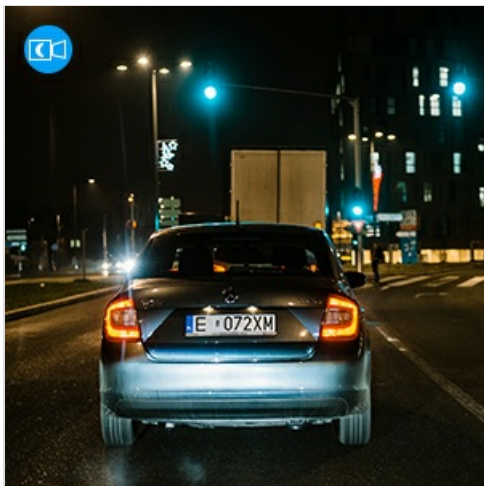


Image: A car driving at night on a city street, illustrating the dash cam's enhanced night vision capabilities for clear recording in low light.

MAINTENANCE

- **Clean Lenses:** Regularly clean the camera lenses with a soft, lint-free cloth to ensure clear video quality.
- **MicroSD Card:** Format the MicroSD card periodically (e.g., once a month) to maintain optimal performance and prevent data corruption. Back up any important files before formatting.
- **Temperature:** Avoid exposing the dash cam to extreme temperatures for extended periods, as this can affect battery life and device performance.

TROUBLESHOOTING

Problem	Solution
Dash cam does not power on.	<ul style="list-style-type: none">◦ Check the car charger connection and ensure the vehicle's cigarette lighter socket is working.◦ Ensure the dash cam's battery is charged (if applicable for manual power on).
Recording stops unexpectedly.	<ul style="list-style-type: none">◦ Format the MicroSD card.◦ Ensure the MicroSD card is not full (loop recording should prevent this, but corrupted files can interfere).◦ Use a high-speed (Class 10 or U1/U3) MicroSD card.
Video footage is blurry or unclear.	<ul style="list-style-type: none">◦ Clean the camera lenses.◦ Ensure the protective film has been removed from the lenses.◦ Check if the camera is securely mounted and not vibrating.
G-sensor is too sensitive/not sensitive enough.	Adjust the G-sensor sensitivity setting in the dash cam's menu.

SPECIFICATIONS

- **Brand:** ABASK
- **Model:** Dual 1080p Dash Cam




- **Screen Size:** 3 inches
- **Video Recording Resolution:** 1080p Full HD (Front & Rear)
- **Front Camera Angle:** 170 degrees
- **Rear Camera Angle:** 150 degrees
- **Special Features:** G-Sensor, Loop Recording, Motion Detection, Parking Monitor, Night Vision, WDR
- **Flash Memory Type:** MicroSD (up to 32GB supported, 32GB included)
- **Battery:** Lithium-ion (rechargeable, included)
- **Mounting Type:** Suction Cup Mount
- **Color:** Dark Black



WARRANTY AND SUPPORT

For warranty information or technical support, please refer to the contact details provided with your purchase documentation or visit the official ABASK website. If you have any questions or encounter issues, do not hesitate to contact customer service.

Contact: support@abask.com

Related Documents - Dual 1080p Dash Cam

<div><div>FHD Dual 1080P</div><div>J05 Dash Cam</div><div></div><div>[User Manual]</div></div>	<div>Abask J05 Dash Cam User Manual</div> <div>User manual for the Abask J05 Dash Cam, detailing setup, operation, features, and troubleshooting for this FHD Dual 1080P vehicle camera.</div>
<div><div>Abask</div><div>Ultra HD 4K</div><div>Dash Camera A8</div><div></div></div>	<div>Abask A8 4K Dash Camera User Manual</div> <div>Comprehensive user manual for the Abask A8 4K Dash Camera, covering installation, operation, settings, and after-sales support. Features Ultra HD video, GPS, and Parking Monitor.</div>
<div><div>Dash Camera</div><div></div><div>USER MANUAL</div></div>	<div>Dash Camera User Manual</div> <div>User manual for the Dash Camera (Car DVR) providing instructions on installation, operation, settings, and troubleshooting. Features include 1080P recording, wide-angle lens, motion detection, and parking monitoring.</div>

	<p>abask ZD-X35 4K Dash Cam User Manual - Installation and Operation Guide</p> <p>Comprehensive user manual for the abask ZD-X35 4K Dash Cam. Learn about installation, setup, WiFi connection, operating modes, system settings, and after-sales support from Shenzhen Jingzhenda Industrial Co.Ltd.</p>
	<p>Abask J05Pro Dash Cam User Manual</p> <p>Comprehensive user manual for the Abask J05Pro Dash Cam, covering installation, setup, features, troubleshooting, and warranty information. Learn how to use your dash cam for optimal performance and safety.</p>
	<p>Abask J05Pro Dash Cam User Manual: UHD 4K WiFi</p> <p>User manual for the Abask J05Pro Dash Cam, featuring UHD 4K resolution, WiFi connectivity, and advanced features. This guide provides setup, operation, and troubleshooting instructions.</p>