

## Bluedio S6

# Bluedio S6 Wireless Earbuds User Manual

Model: S6

### 1. PRODUCT OVERVIEW

The Bluedio S6 Wireless Earbuds are designed for an immersive audio experience, featuring advanced Bluetooth 5.1 technology, extended battery life, and a secure fit ideal for sports and active lifestyles. The included charging case with dual LED displays provides convenient power management.



Image: Bluedio S6 Wireless Earbuds and their charging case, showcasing the LED battery display.

## 2. PACKAGE CONTENTS

Please verify that all items are present in your package:

- Bluedio S6 Wireless Earbuds (Left and Right)
- Charging Case with LED Display
- USB Type-C Charging Cable
- Multiple sizes of Eartips (S, M, L)
- User Manual (this document)



Image: The complete package contents of the Bluedio S6 earbuds.

### 3. SETUP GUIDE

#### 3.1 Initial Charging

Before first use, fully charge the earbuds and the charging case. Connect the provided USB Type-C cable to the charging case and a compatible USB power source. The LED display on the case will indicate the charging status and battery level.

# Ultra-long 42 Hours Playtime

With USB-C Fast Charging Case



**7**  
Hrs

**Earbuds**

**35**  
Hrs

**Charging Case**

**2**  
Hrs

**Fully Charge  
the Case**

Image: Visual representation of the Bluedio S6 earbuds and charging case, highlighting battery life and charging duration.

## 3.2 Pairing with Your Device

1. **Automatic Power On & Pairing:** Open the charging case and remove both S6 earbuds. They will automatically power on and attempt to pair with each other.
2. **Activate Bluetooth:** On your mobile phone or other Bluetooth-enabled device, go to the Bluetooth settings and turn on Bluetooth.
3. **Select "S6":** In the list of available Bluetooth devices, search for and select "S6" to connect.

4. **Confirmation:** Once connected, you will hear an audible confirmation, and the earbuds will be ready for use.
5. **Automatic Reconnection:** After the initial successful connection, the S6 earbuds will automatically connect to the last paired device when removed from the charging case.

# Auto Pairing

When you pick the earbuds out of the charging case, they'll automatically connect to the last paired device

When put them back, they shut down and recharge

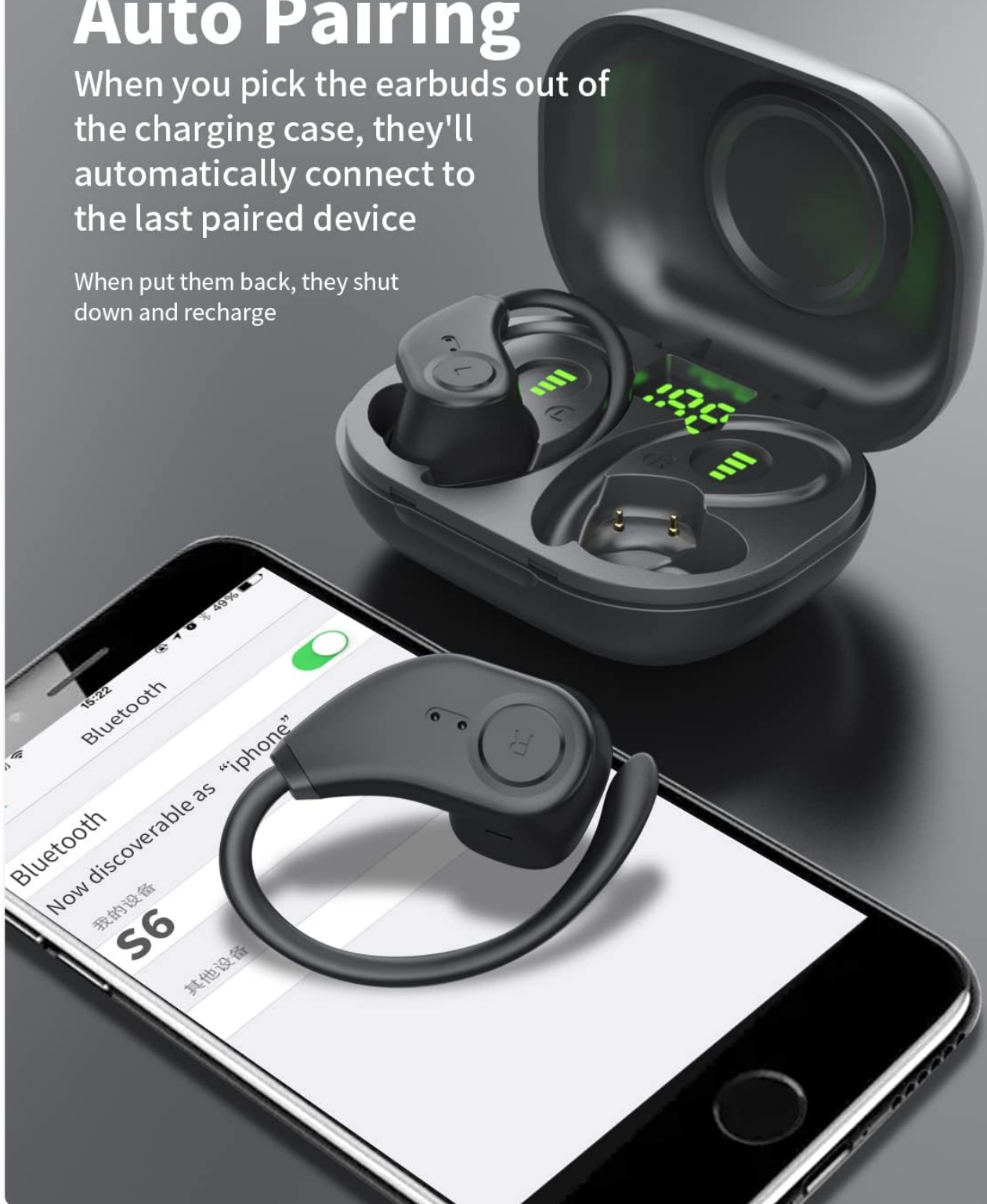


Image: The Bluedio S6 earbuds automatically pairing with a mobile device upon removal from the charging case.

# ADVANCED BLUETOOTH 5.1

With latest Bluetooth 5.1 chip fast pairing with majority of Bluetooth device, stable signal transmission



Image: An earbud illustrating the advanced Bluetooth 5.1 chip for stable signal transmission.

## 4. OPERATING INSTRUCTIONS

### 4.1 Wearing the Earbuds

The Bluedio S6 earbuds feature earhooks for a secure and comfortable fit, especially during physical activities. Gently place the earbud into your ear canal and adjust the earhook over your ear until it feels stable and comfortable.



## DESIGNED FOR SPORTS

**With flexible earhooks & soft silicone eartips, perfect for doing exercise**

Image: A user wearing the Bluedio S6 earbuds, highlighting their design for sports and secure fit.

### 4.2 Touch Controls

The S6 earbuds are equipped with smart touch controls on each earbud for easy management of music and calls. Refer to the following table for common operations:

Action	Function
Single Tap (L/R)	Play/Pause Music, Answer/End Call
Double Tap (Right Earbud)	Volume Up
Double Tap (Left Earbud)	Volume Down
Triple Tap (Right Earbud)	Next Track
Triple Tap (Left Earbud)	Previous Track
Press and Hold (2 seconds)	Reject Call
Press and Hold (5 seconds)	Power On/Off
Press and Hold (1 second)	Activate Voice Assistant



Image: Visual guide to the touch control functions on the Bluedio S6 earbuds.

### 4.3 Call Management

With the built-in microphone, you can easily manage calls directly from your earbuds without needing to access your phone.

- **Answer Call:** Single tap either earbud.
- **End Call:** Single tap either earbud during a call.
- **Reject Call:** Press and hold either earbud for 2 seconds.

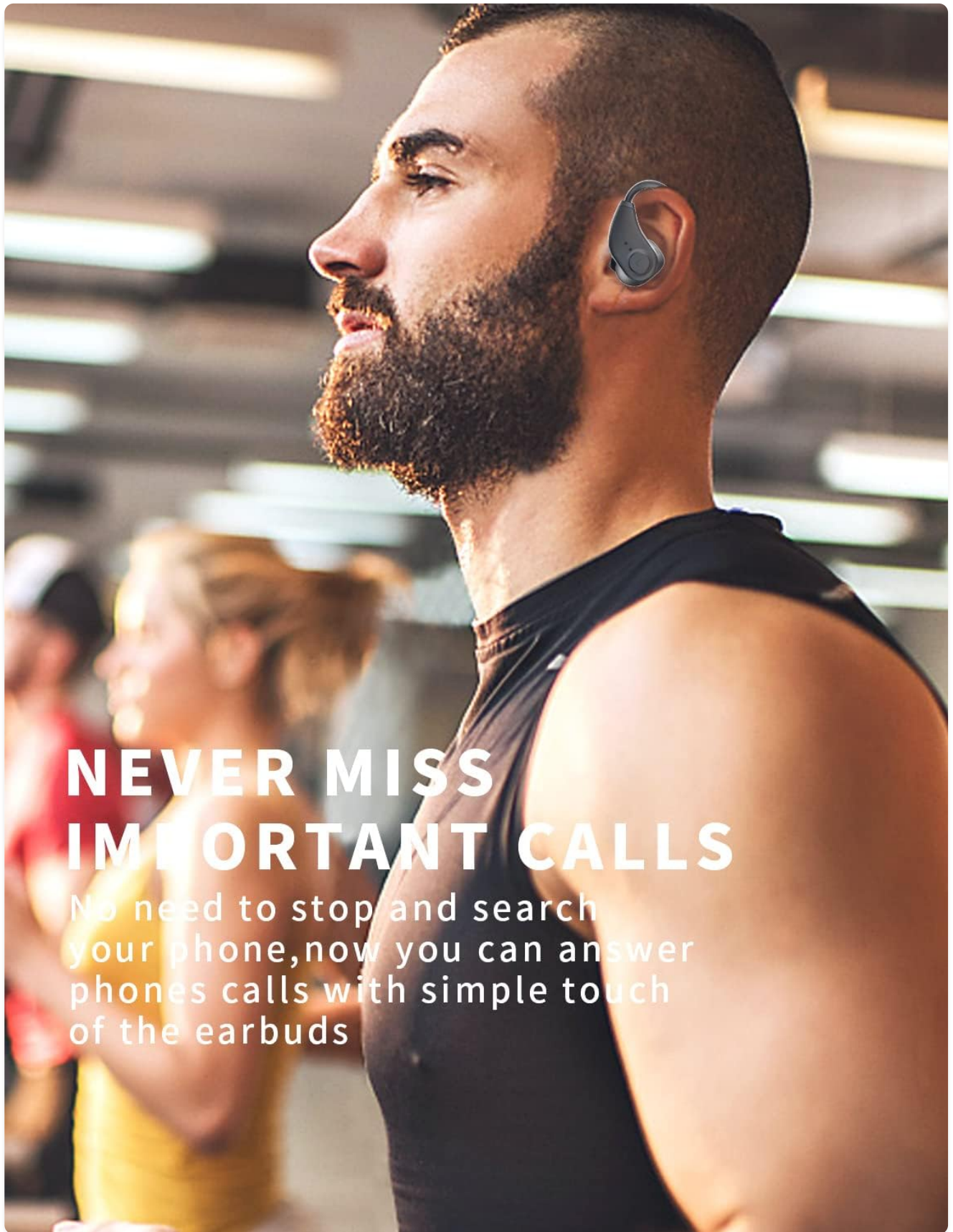


Image: A user demonstrating the convenience of answering calls directly with the Bluedio S6 earbuds.

## 5. MAINTENANCE

### 5.1 Charging the Earbuds and Case

To charge the earbuds, place them back into the charging case. The earbuds will automatically begin charging. The LED display on the case shows the individual battery levels of the left and right earbuds, as well as the case's remaining power. To charge the case, connect it to a USB power source using the provided Type-C cable.

- Earbuds playtime on a single charge: Approximately 9 hours.
- Total playtime with charging case: Up to 42 hours.
- Charging time for case: Approximately 2 hours.



Image: Icons illustrating key features: LED battery display, 600mAh charging case, and Type-C charging port.

## 5.2 Cleaning and Storage

To ensure longevity and optimal performance, regularly clean your earbuds and charging case. Use a soft, dry, lint-free cloth to wipe down the surfaces. For the eartips, you may remove them and clean with a damp cloth, ensuring they are completely dry before reattaching. Store the earbuds in their charging case when not in use to protect them from dust and damage.

- Avoid using abrasive cleaners or solvents.
- Do not submerge the earbuds or case in water. While water-resistant, they are not designed for submersion.
- Keep away from extreme temperatures.

## 6. TROUBLESHOOTING

If you encounter any issues with your Bluedio S6 earbuds, please refer to the following common solutions:

### 6.1 Earbuds Not Pairing with Each Other or Device

- Ensure both earbuds are fully charged.
- Place both earbuds back into the charging case, close the lid, wait a few seconds, then open the lid and remove them again. This often resets the pairing.
- On your device, forget or delete "S6" from your Bluetooth device list. Then, repeat the pairing process from Section 3.2.
- Ensure your device's Bluetooth is enabled and within range (typically 10 meters/33 feet).

### 6.2 No Sound or Low Volume

- Check the volume level on both your earbuds (using touch controls) and your connected device.
- Ensure the earbuds are properly seated in your ears and the eartips provide a good seal.
- Try playing different audio sources to rule out an issue with the specific media.
- Reconnect the earbuds by placing them in the case and taking them out again.



Image: An internal view of the earbud, highlighting the 13mm dynamic drivers responsible for high-quality stereo sound.

### 6.3 Charging Case Not Charging

- Verify the USB Type-C cable is securely connected to both the case and the power source.
- Try a different USB port or power adapter.
- Ensure the charging cable is not damaged.

## 7. SPECIFICATIONS

Detailed technical specifications for the Bluedio S6 Wireless Earbuds:






Feature	Detail
Model Name	S6
Connectivity Technology	Wireless (Bluetooth 5.1)
Wireless Communication Technology	Bluetooth
Included Components	Wireless Charging Case
Material	Plastic
Specific Uses for Product	Sport
Compatible Devices	Cellphones, Tablets, Laptops
Item Weight	117 Grams
Water Resistance Level	Waterproof (Note: typically means splash/sweat resistant, not submersible)
Frequency Range	20Hz-20000Hz
Microphone Format	Built-In
Battery Average Life (Earbuds)	9 Hours (single charge)
Total Playtime with Case	Up to 42 Hours
Charging Case Battery Capacity	600mAh (from A+ content image)
Ear Placement	In Ear (with earhooks)
Color	Black

## 8. WARRANTY AND SUPPORT

Bluedio products are manufactured to high quality standards. For warranty information and customer support, please refer to the warranty card included in your product packaging or visit the official Bluedio website. Keep your purchase receipt as proof of purchase for any warranty claims.

For further assistance, you may also contact Bluedio customer service through their official channels.

Related Documents - S6

	<p><a href="#">Bluedio T4S Wireless Headphones User Manual and Guide</a></p> <p>Comprehensive user manual for Bluedio T4S wireless Bluetooth headphones. Learn about setup, operation, safety, features like ANC, and technical specifications.</p>
	<p><a href="#">AXLOIE S6 Wireless Earbuds User Manual: Features, Pairing, and Specifications</a></p> <p>Comprehensive user manual for AXLOIE S6 wireless earbuds. Learn about setup, pairing, controls, charging, heart rate monitoring, FAQs, and technical specifications.</p>
	<p><a href="#">Tayogo S6 Ear-Clip Wireless Headphones: Instruction Manual and Specifications</a></p> <p>Get detailed instructions for your Tayogo S6 Ear-Clip Wireless Headphones. This guide covers pairing, operation, charging, specifications, and important notes for Bluetooth V5.3 earbuds.</p>
	<p><a href="#">Daedox Wireless Earbuds User Manual and Specifications</a></p> <p>Comprehensive guide for Daedox Wireless Earbuds, covering package contents, technical specifications, charging instructions, pairing, usage functions, warnings, and warranty information.</p>
	<p><a href="#">S6 SE Wireless Bluetooth Headset User Manual</a></p> <p>User manual for the S6 SE Wireless Bluetooth Headset, detailing product specifications, functional instructions, pairing methods, charging operations, and important precautions. Features Bluetooth V5.1, 2.5-hour playtime, and a 10m signal distance.</p>