

Manuals+

[Q & A](#) | [Deep Search](#) | [Upload](#)

manuals.plus /

› [Sensiplast](#) /

› [Sensiplast Sport Thigh Support Bandage - User Manual](#)

Sensiplast Sport Thigh Support Bandage

Sensiplast Sport Thigh Support Bandage - User Manual

Model: Sport Thigh Support Bandage | Size: L (58-61.5 cm)

1. INTRODUCTION

Thank you for choosing the Sensiplast Sport Thigh Support Bandage. This manual provides essential information for the correct use, care, and maintenance of your product. Please read it carefully before first use and keep it for future reference.

This thigh support is designed to provide gentle compression and stabilization to the thigh area, which can be beneficial during sports activities, leisure, or in cases of irritation, swelling, and post-injury recovery. Its skin-friendly material ensures good moisture absorption and comfort.

2. SAFETY INFORMATION AND PRECAUTIONS

- Consult a medical professional before using this product if you have pre-existing medical conditions, circulatory problems, skin sensitivities, or if you are unsure about its suitability for your specific condition.
- Do not apply the bandage too tightly, as this may restrict blood circulation. Ensure a comfortable fit that provides support without causing discomfort, numbness, or tingling.
- Discontinue use immediately if you experience increased pain, discomfort, skin irritation, or any adverse reactions.
- This product is intended for external use only.
- Keep out of reach of children.
- Do not use on open wounds or damaged skin.

3. APPLICATION INSTRUCTIONS

To ensure optimal support and comfort, follow these steps for applying the Sensiplast Sport Thigh Support Bandage:

1. **Select the Correct Size:** Ensure you have chosen the correct size (L, 58-61.5 cm) for your thigh circumference to achieve effective compression without excessive tightness.
2. **Positioning:** Gently slide the bandage up your leg, positioning it over the thigh area that requires support.
3. **Adjust for Comfort:** Adjust the bandage so it sits smoothly against your skin, without wrinkles or bunching. The anti-slip coating helps ensure optimal hold. The fit should be snug but not restrictive.
4. **Check Circulation:** After application, check for any signs of restricted circulation, such as numbness, tingling, or

discoloration. If these occur, loosen or remove the bandage.



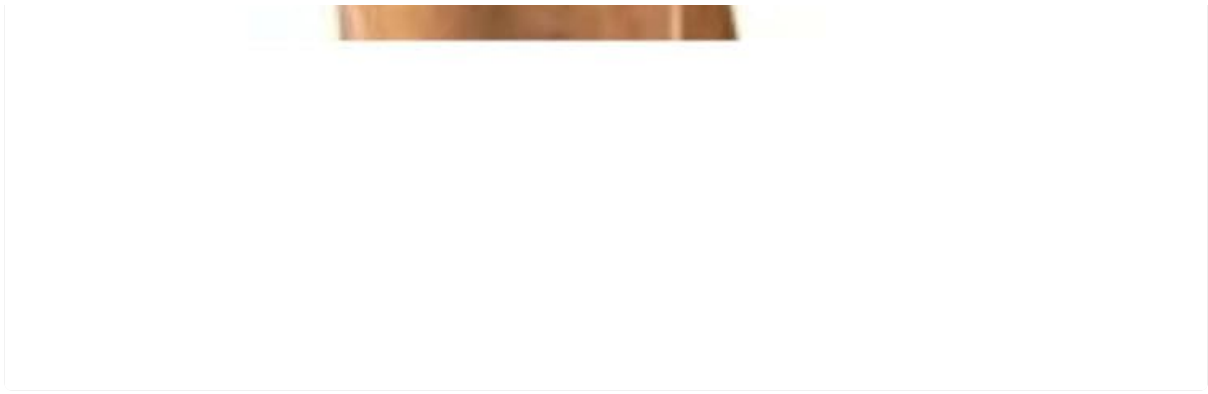


Image 1: Sensiplast Thigh Support Bandage correctly applied to the thigh. This image illustrates the proper placement of the bandage on the leg, covering the thigh area for support.

4. USAGE GUIDELINES

The Sensiplast Sport Thigh Support Bandage is suitable for various activities and conditions:

- **Sport and Leisure:** Provides stabilizing support during physical activities such as gymnastics, swimming, yoga, and other sports, helping to increase load-bearing capacity.
- **Recovery:** Can be beneficial in cases of irritation, swelling, and after injuries, offering gentle compression and warmth.
- **Duration of Use:** Use as needed or as advised by a medical professional. Avoid wearing for excessively long periods without breaks, especially during sleep, unless specifically instructed.

5. CARE AND MAINTENANCE

Proper care will extend the life of your Sensiplast Thigh Support Bandage:

- **Washing:** The bandage is machine washable up to 30 °C (86 °F). Use a gentle cycle.
- **Detergent:** Use a mild detergent. Do not use bleach or harsh chemicals.
- **Drying:** Do not tumble dry. Air dry flat, away from direct heat or sunlight, to maintain elasticity and shape.
- **Ironing:** Do not iron.
- **Dry Cleaning:** Do not dry clean.



Image 2: Flat view of the Sensiplast Thigh Support Bandage. This image shows the overall design and material texture of the bandage when not in use.

6. TROUBLESHOOTING

If you encounter any issues while using your Sensiplast Thigh Support Bandage, consider the following:

- **Discomfort or Pain:** Ensure the bandage is not applied too tightly. Re-adjust its position. If discomfort persists, discontinue use and consult a medical professional.
- **Slipping:** The bandage features an anti-slip coating. Ensure your skin is clean and dry before application. If slipping continues, verify you have the correct size.

- **Skin Irritation:** If skin irritation occurs, remove the bandage immediately. Ensure the bandage is clean and dry. If irritation persists, discontinue use and consult a medical professional.

7. PRODUCT SPECIFICATIONS

Feature	Detail
Product Name	Sensiplast Sport Thigh Support Bandage
Model	Sport Thigh Support Bandage
Brand	Sensiplast
Size	L (58-61.5 cm thigh circumference)
Material Features	Skin-friendly, good moisture absorption, anti-slip coating
Care Instructions	Machine washable up to 30 °C (86 °F)
Intended Use	Thigh support for sport, leisure, irritation, swelling, post-injury
Manufacturer	Horizonte Textil GmbH
ASIN	B09PHP16X9

8. WARRANTY AND SUPPORT

Specific warranty information for this product is not provided in the available data. For any questions, concerns, or support regarding your Sensiplast Sport Thigh Support Bandage, please refer to the retailer or manufacturer's contact information provided at the point of purchase.



© 2023 Sensiplast. All rights reserved.

This manual is for informational purposes only and does not replace professional medical advice.