

Manuals+

[Q & A](#) | [Deep Search](#) | [Upload](#)

[manuals.plus](#) /

› [ARCORA](#) /

› [ARCORA Faucet Supply Lines User Manual](#)

ARCORA 9 Inch

ARCORA Faucet Supply Lines User Manual

Model: 9 Inch Length Faucet Supply Lines

INTRODUCTION

This manual provides essential information for the installation, operation, and maintenance of your ARCORA Faucet Supply Lines. These braided nylon water supply lines are designed for connecting faucets to water sources in bathrooms and kitchens, as well as for toilets and water heaters. They feature 3/8-inch and 1/2-inch compression brass nuts, ensuring a secure and leak-free connection. Please read this manual thoroughly before installation to ensure proper and safe use.

PRODUCT FEATURES

- **Connection Type:** 3/8" Compression x 1/2" Compression brass nuts. *Note: Not compatible with FIP Faucet Hose.*
- **Length:** 9 Inch, suitable for various plumbing setups.
- **Material:** Constructed with superior quality braided nylon for the outer tube and a PEX inner tube, offering resistance to corrosion and rust, and ensuring maximum pressure and performance.
- **Durability:** Designed to prevent bursting and ensure longevity.
- **Easy Installation:** Flexible design prevents kinking and crimping, allowing for straightforward installation without specialized tools.
- **Leak-Free Design:** Includes sealing washers and solid brass connectors to prevent water leakage.
- **Certifications:** cUPC certified, meeting U.S. and Canada high-quality standards (Uniform Plumbing Code), and NSF 61 certified (National Sanitation Foundation) for drinking water safety. Lead-free.



Image: Two ARCORA braided nylon faucet supply lines, showing their flexible construction and metal connectors.

SUPPLY LINES

cUPC Certified Product



The supply lines meets U.S. and Canada high-quality standard (Uniform Plumbing Code), certified by IAPMO

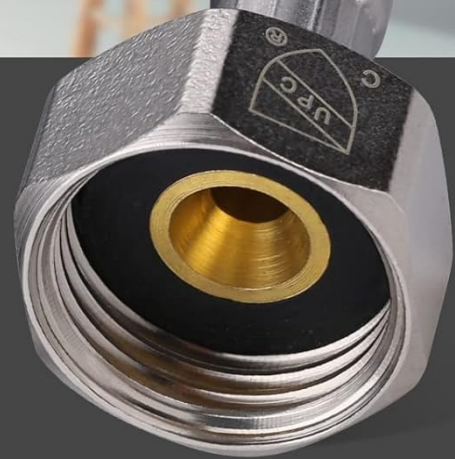


Image: Detailed view of the 3/8" and 1/2" compression connections on the supply lines, highlighting their specific sizes.

Super High Tensile Braided Nylon Outer Tube

Brass Joint

2 Pieces of Gaskets Prevent Leakage

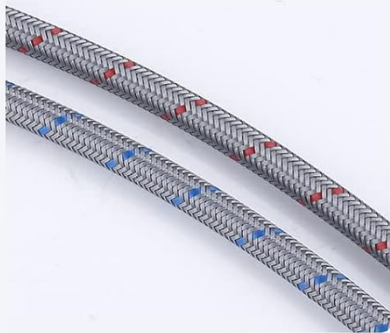


Image: Close-up of the brass nuts and internal gaskets, illustrating the components designed for rust protection and leak prevention.

Brass Nuts

Rust protection and against corrosion



Image: Certifications (cUPC, NSF, Lead-Free) indicating the product's compliance with high-quality and safety standards.

SPECIFICATIONS

Brand	ARCORA
Material	Braided Nylon (Outer), PEX (Inner Tube)
Color	Blue, Red, Silver
Product Dimensions	8"L x 0.5"W (approximate, for 9-inch length variant)
Item Length	9 Inches
Outside Diameter	9.53 Millimeters

Item Weight	0.11 Kilograms (approx. 3.84 ounces)
Specific Uses	Kitchen Sink, Bathroom, Toilet, Water Heater, Indoor/Outdoor Sink Faucets
Certification	cUPC, NSF 61, Lead-Free

SETUP AND INSTALLATION

Before beginning installation, ensure you have the correct length of supply lines. Measure the distance from the stub out to the water inlet on the faucet and add a few inches for flexibility. For example, if the measured length is 9 inches, consider ordering 12-inch lines for easier installation.

Required Tools (Not Included):

- Adjustable Wrench or Pliers
- Bucket (for catching residual water)
- Towel or Rag

Installation Steps:

1. **Turn Off Water Supply:** Locate the main water shut-off valve for your home or the specific shut-off valves for the faucet you are working on (usually under the sink). Turn them off completely.
2. **Drain Residual Water:** Open the faucet to drain any remaining water from the lines. Place a bucket under the existing supply lines to catch any drips when disconnecting.
3. **Remove Old Supply Lines:** Use an adjustable wrench to carefully loosen and remove the old supply lines from both the faucet and the water shut-off valves.
4. **Connect New Supply Lines to Faucet:** Identify the hot (red marking) and cold (blue marking) lines. Connect the appropriate ends of the new ARCORA supply lines to the corresponding inlets on your faucet. Hand-tighten first, then use a wrench for a snug fit. Do not overtighten.
5. **Connect New Supply Lines to Water Valves:** Connect the other ends of the supply lines to the hot and cold water shut-off valves. Ensure the sealing washers are properly seated within the brass nuts to prevent leaks. Hand-tighten, then use a wrench for a snug fit.
6. **Restore Water Supply:** Slowly turn the water shut-off valves back on. Check for any leaks at all connection points. If leaks occur, gently tighten the connections further until the leak stops.
7. **Test Faucet:** Open the faucet to ensure proper water flow and temperature control.

Your browser does not support the video tag.

Video: An official ARCORA video demonstrating the installation process of faucet supply lines, showing connections to a faucet and water valves. This video highlights the ease of installation and the product's flexibility.

9 Inch Faucet Supply Lines

relatively short, please measure the desired length carefully



Attention: Do Not Fit for FIP Faucet Hose.

Image: A visual representation of how the supply lines connect a faucet to the water supply, emphasizing easy installation.

MAINTENANCE

ARCORA Faucet Supply Lines are designed for durability and minimal maintenance. However, regular checks can extend their lifespan and prevent potential issues.

- **Periodic Inspection:** Annually inspect the supply lines for any signs of wear, cracks, kinks, or corrosion. Pay close attention to the connection points for any signs of leakage or mineral buildup.
- **Cleaning:** If necessary, gently wipe the exterior of the lines with a damp cloth to remove dust or grime. Avoid using harsh chemicals or abrasive cleaners, as these can damage the braided nylon.
- **Avoid Stress:** Ensure the lines are not bent at sharp angles or under excessive tension, which can lead to kinking or premature failure. The flexible design allows for gentle curves.
- **Replacement:** While designed for longevity, it is generally recommended to replace supply lines every 5-10 years, or sooner if any signs of damage or degradation are observed.

TROUBLESHOOTING

If you encounter issues with your ARCORA Faucet Supply Lines, refer to the following common problems and solutions:

Problem	Possible Cause	Solution
Water Leakage at Connection Points	Loose connection, improperly seated washer, damaged washer.	Turn off water supply. Gently tighten the connection with a wrench. If the leak persists, check if the washer is properly seated or if it needs replacement. Ensure the connection is not cross-threaded.
No Water Flow or Low Pressure	Water supply turned off, kinked line, debris in line or faucet aerator.	Ensure water supply valves are fully open. Check the supply line for any kinks or sharp bends and straighten them. If the issue persists, the problem might be with the faucet itself or the main water supply.
Hose Appears Kinked or Damaged	Improper installation, excessive bending, external damage.	If the kink is minor, gently straighten the hose. If the hose is severely kinked, cracked, or otherwise damaged, it must be replaced immediately to prevent leaks.

If these troubleshooting steps do not resolve the issue, it is recommended to contact a qualified plumber or ARCORA customer support for assistance.

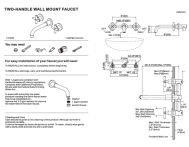
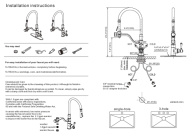
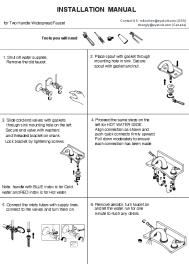
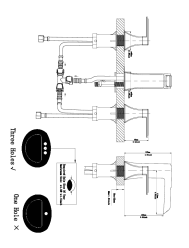
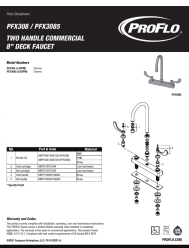
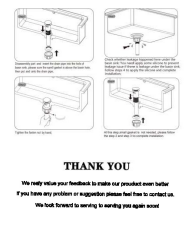
WARRANTY AND SUPPORT

ARCORA products are manufactured to high-quality standards. For specific warranty information regarding your faucet supply lines, please refer to the product packaging or contact ARCORA customer service directly. Keep your purchase receipt as proof of purchase.

For further assistance, technical support, or to inquire about replacement parts, please visit the official ARCORA website or contact their customer support team:

ARCORA Official Store: [Visit ARCORA Store on Amazon](#)

Manufacturer: ARCORA

	<p>Arcora Two-Handle Wall Mount Faucet Installation Guide</p> <p>Comprehensive installation guide for the Arcora two-handle wall mount faucet, including parts list, safety information, and cleaning instructions.</p>
	<p>ARCORA Single-Handle Kitchen Faucet Installation Guide</p> <p>Step-by-step installation instructions for the ARCORA Single-Handle Solid Brass High Arc Kitchen Faucet with Sprayer. Includes parts, care, and compliance information.</p>
	<p>SR SUN RISE 8-Inch Matte Black Two Handle Widespread Bathroom Faucet Installation Manual</p> <p>Step-by-step installation guide for the SR SUN RISE 8-inch matte black two-handle widespread bathroom faucet. Includes tools needed, detailed assembly instructions, and important notes for RV and bath vanity installations.</p>
	<p>Bathroom Faucet Installation Guide: Sink Hole Requirements and Dimensions</p> <p>Provides essential information on sink hole configurations, required hole size, and key dimensions for installing a CHUANGYIWANGLUO bathroom faucet. Details compatibility for three-hole versus one-hole sinks.</p>
	<p>PROFLO PFX308/PFX3085 8-Inch Commercial Deck Faucet Parts and Warranty</p> <p>Detailed parts breakdown and warranty information for the PROFLO PFX308 and PFX3085 8-inch commercial deck faucets, including model numbers, part codes, materials, and compliance standards.</p>
	<p>3 Hole Bathroom Faucet Installation Guide and Parts List</p> <p>Comprehensive guide for installing a 3 Hole Bathroom Faucet, including step-by-step instructions, parts list, tools required, and maintenance tips. Features detailed diagrams and clear explanations for CHUANGYIWANGLUO faucets.</p>