

Manuals+

[Q & A](#) | [Deep Search](#) | [Upload](#)

manuals.plus /

> [KODAK](#) /

> [KODAK 60 Inch Projector Screen with Stand Instruction Manual](#)

KODAK RODPJSTS60.16

KODAK 60 Inch Projector Screen with Stand Instruction Manual

Model: RODPJSTS60.16

INTRODUCTION

This manual provides comprehensive instructions for the setup, operation, and maintenance of your KODAK 60 Inch Projector Screen with Stand. Please read this manual thoroughly before using the product to ensure proper function and longevity. Keep this manual for future reference.

PACKAGE CONTENTS

Verify that all items listed below are included in your package:

- KODAK 60 Inch Projector Screen
- Adjustable Tripod Stand
- Storage Carry Case

SETUP INSTRUCTIONS

Follow these steps to correctly assemble your KODAK Projector Screen with Stand.

Component Overview

BENEFITS THAT MAKE SCREEN SETUP EASY

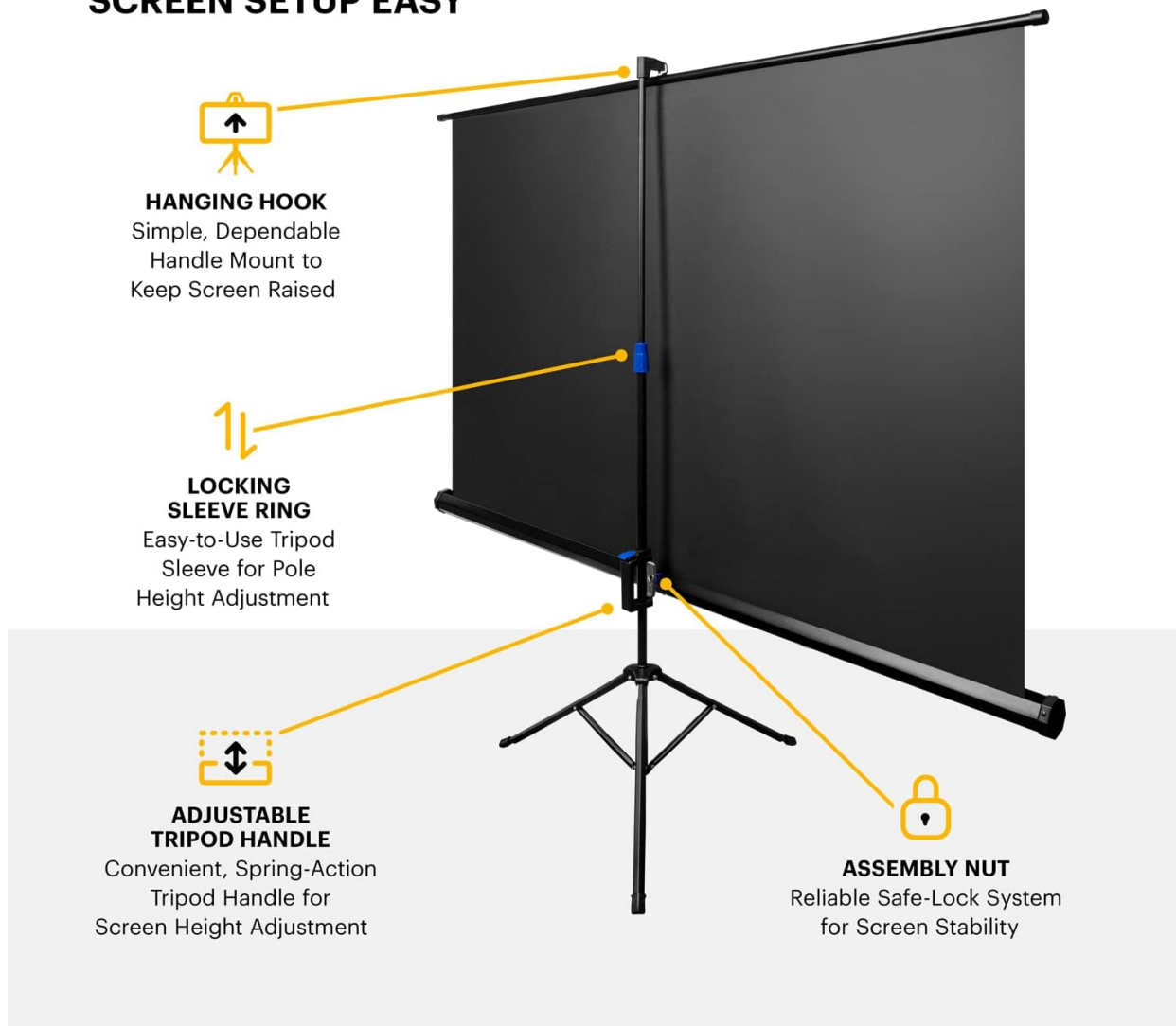


Image: Labeled components of the KODAK Projector Screen stand, highlighting the hanging hook, locking sleeve ring, adjustable tripod handle, and assembly nut for easy identification during setup.

Step-by-Step Assembly

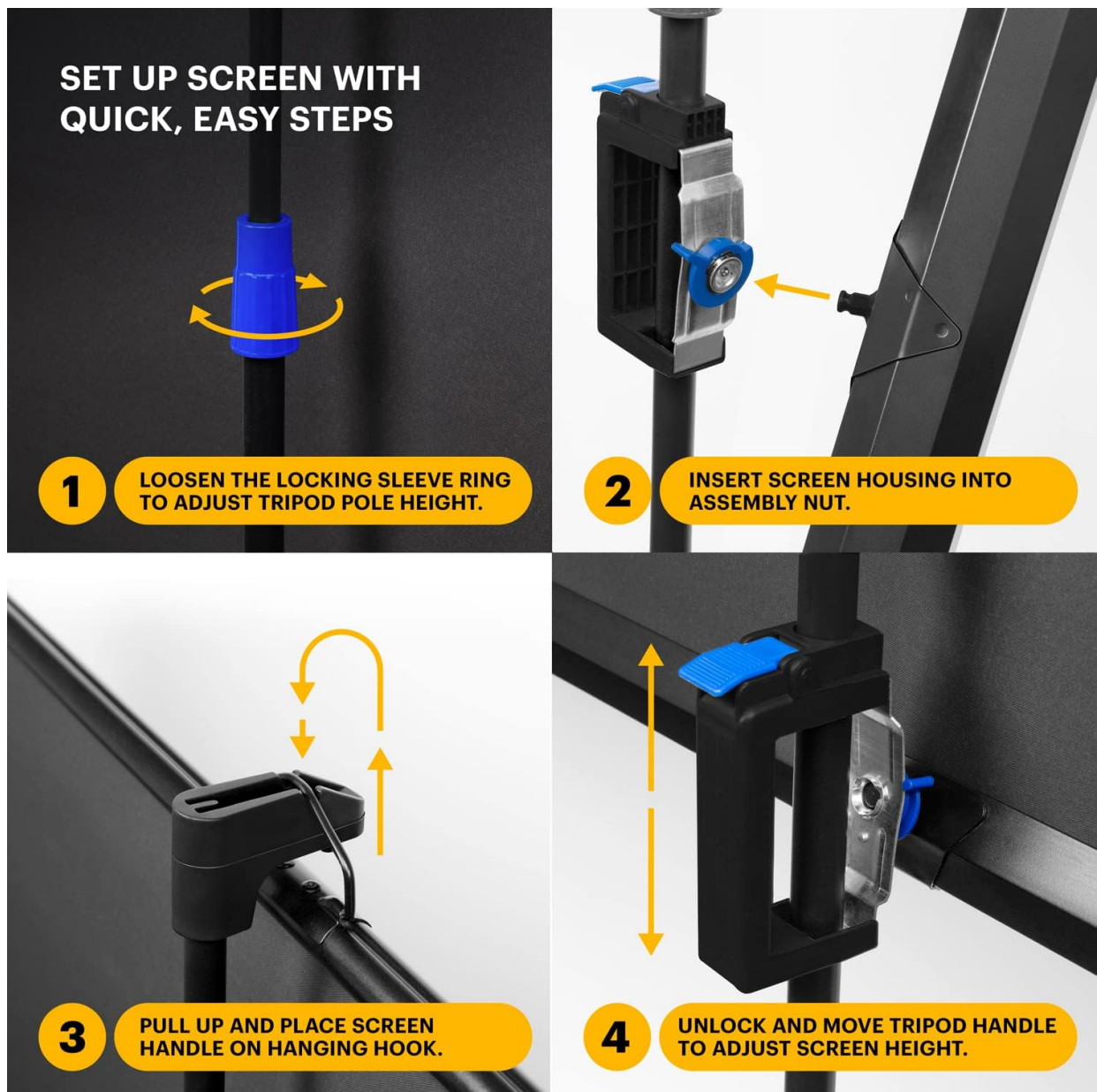


Image: A visual sequence demonstrating the four key steps for quick screen setup.

1. **Loosen the Locking Sleeve Ring:** Rotate the blue locking sleeve ring counter-clockwise to allow adjustment of the tripod pole height.
2. **Insert Screen Housing into Assembly Nut:** Carefully place the screen housing onto the assembly nut on the tripod pole. Ensure it is securely seated.
3. **Pull Up and Place Screen Handle on Hanging Hook:** Extend the screen upwards and hook the screen handle onto the designated hanging hook at the top of the tripod pole.
4. **Unlock and Move Tripod Handle to Adjust Screen Height:** Use the adjustable tripod handle to fine-tune the screen's vertical position. Lock it in place once the desired height is achieved.

OPERATION

Once assembled, the projector screen is ready for use. Ensure your projector is positioned correctly to fill the screen area.

Viewing Angle and Image Quality

ENJOY ALL YOUR ENTERTAINMENT IN FULL HD AND 4K

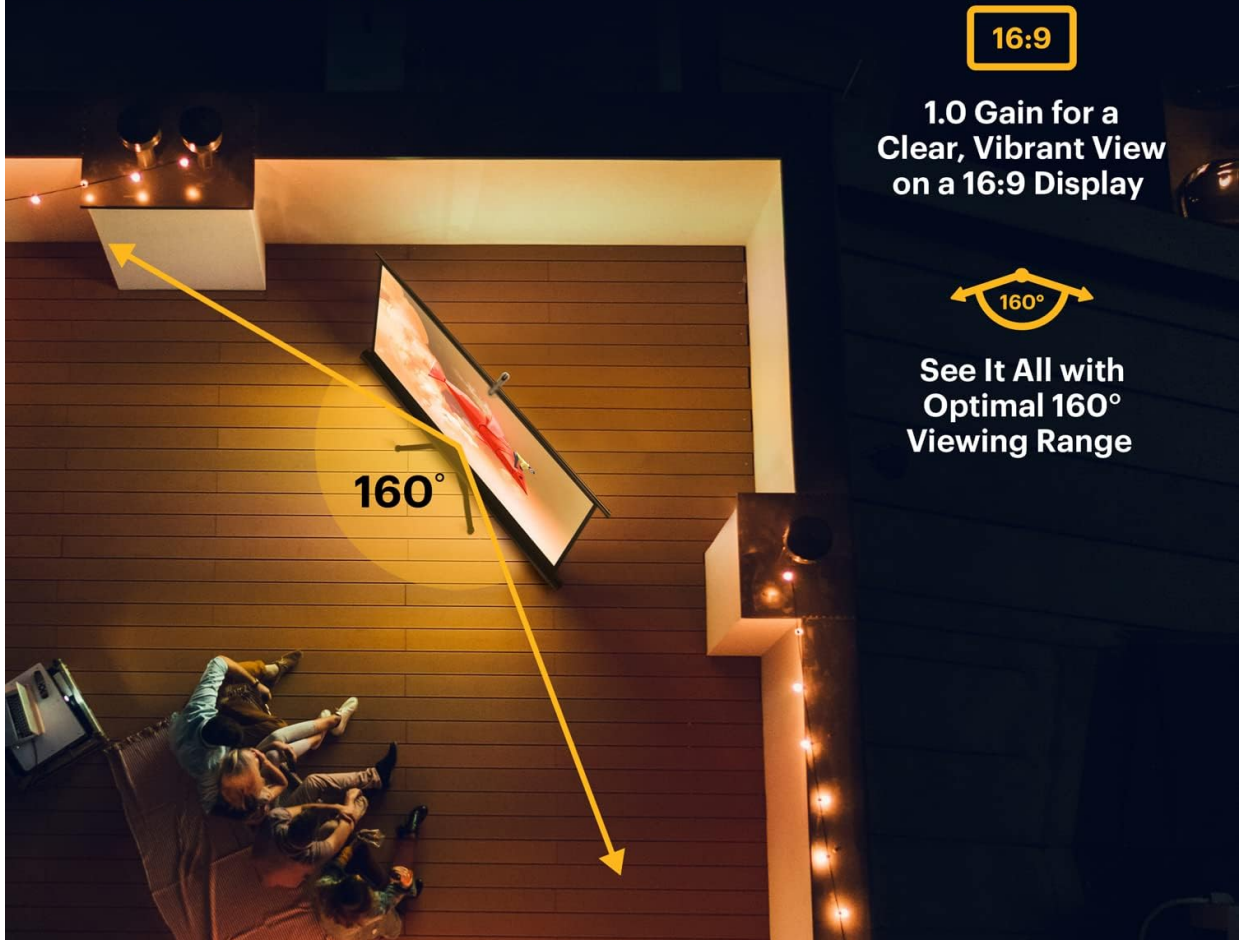


Image: An illustration demonstrating the wide 160-degree viewing angle of the projector screen, ensuring clear visibility from various positions.

- The screen features a 16:9 aspect ratio, ideal for most modern content.
- A 1.0 gain reflection ensures a bright and clear image.
- The 160° viewing angle allows for comfortable viewing from various positions.

MAINTENANCE AND CARE

Proper care will extend the life of your projector screen.

- **Cleaning the Screen:** Use a soft, damp cloth with mild soap and water to gently wipe the screen surface. Avoid abrasive cleaners or harsh chemicals.
- **Storage:** When not in use, retract the screen fully into its housing and store it in the provided carry case. Store in a cool, dry place away from direct sunlight.
- **Handling:** Avoid touching the screen surface directly with your hands to prevent smudges or damage.

TROUBLESHOOTING

Refer to this section for solutions to common issues.

- **Screen is not stable:** Ensure the tripod legs are fully extended and locked. Check that the screen housing is securely inserted into the assembly nut and the adjustable tripod handle is tightened.
- **Wrinkles on the screen:** The screen material is designed to be wrinkle-resistant. If minor wrinkles appear, ensure the screen is fully extended and allowed to hang for a period. Avoid folding or creasing the screen during storage.
- **Difficulty retracting the screen:** Ensure the screen handle is disengaged from the hanging hook. Gently guide the screen back into its housing. Do not force retraction.

SPECIFICATIONS

Feature	Detail
Model Number	RODPJSTS60.16
Screen Size	60 inches (diagonal)
Display Dimensions	52.28 x 29.41 inches
Aspect Ratio	16:9
Material	PVC & Terylene Fabric
Gain	1.0
Viewing Angle	160°
Item Weight	15.4 pounds
Product Dimensions (packed)	52.32 x 29.49 x 4.8 inches
Mounting Type	Tripod Mount

WARRANTY AND SUPPORT

For warranty information or technical support, please refer to the KODAK official website or contact their customer service. Keep your purchase receipt as proof of purchase.