

QINIZX c4ebb811-5565-4c05-a0aa-0c6b76126517

QINIZX USB Mini 4-Key Keypad

User Instruction Manual

Model: c4ebb811-5565-4c05-a0aa-0c6b76126517

1. PRODUCT OVERVIEW

The QINIZX USB Mini 4-Key Keypad is a compact, one-handed mechanical gaming keyboard designed for programming macros and custom functions. It features RGB backlighting, hot-swappable mechanical switches (default Red switches), and a USB-C interface for versatile connectivity. This keypad is driver-free (HID standard) after initial configuration and is compatible with Windows, Mac, Linux, and Raspberry Pi systems.



Image: The QINIZX USB Mini 4-Key Keypad shown with its included USB-C cable.

2. PACKAGE CONTENTS

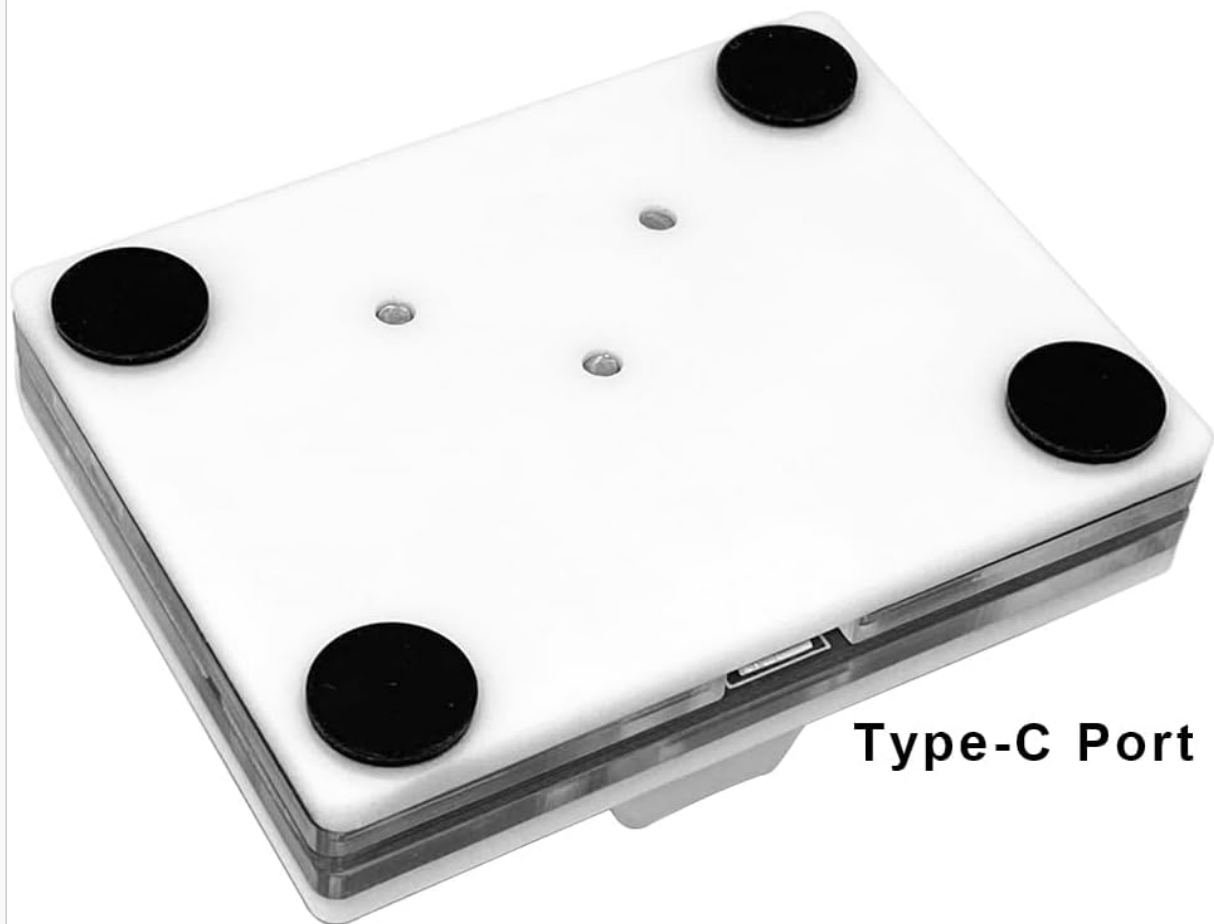
- 1 x QINIZX USB Mini 4-Key Keypad
- 1 x USB-C to USB-A Cable (approx. 1.5m)

3. PRODUCT SPECIFICATIONS

Feature	Description
Dimensions (L x W x H)	2.52 x 1.81 x 1.18 inches (6.4 x 4.6 x 3 cm)
Weight	1.92 ounces (54.4 g)
Connectivity	Type-C to USB
Switch Type	Mechanical (Hot-swappable, default Red switches)
Backlighting	RGB LED

Compatible OS	Windows, Mac OS, Linux, Raspberry Pi
Interface	HID Standard (Driver-free after configuration)

4Pcs Small Non-slip Pads



Type-C Port

Overall size: 2.52x1.81x1.18inch
Net Weight: 0.12lb

Image: Bottom view of the keypad highlighting the four non-slip pads and the Type-C port, along with its compact dimensions.

4. SETUP AND INSTALLATION

4.1 Connecting the Keypad

1. Connect the USB-C end of the provided cable to the Type-C port on the keypad.
2. Connect the USB-A end of the cable to an available USB port on your computer.
3. The keypad is plug-and-play for basic functionality (e.g., default arrow keys). For custom programming, software is required.

4.2 Software Installation and Configuration

To fully customize the keypad's functions and RGB lighting, you need to use the dedicated configuration software. This software is an executable file (.exe) and may be flagged by some antivirus programs. It is not a virus; please temporarily disable your PC's protection software if necessary to proceed with the

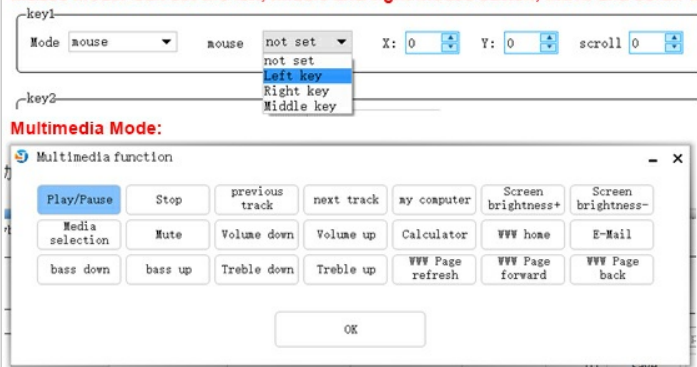
installation.

1. **Download the software:** Access the English software website at <https://key.itytsoft.com/>.
2. **Select Language:** On the website, choose the English language option to download the correct software package (usually a .zip file).
3. **Extract Files:** Unzip the downloaded archive. Locate and open the "Run-me.exe" file within the extracted folder.
4. **Launch Software:** Run the "Run-me.exe" application to start the configuration utility.
5. **Connect and Configure:**
 - In the software, click "SearchDevice" to detect your connected keypad.
 - Once detected, click "configure" to access the programming interface.
 - If the software does not show a connection after 10 seconds, try a different USB port or reboot your computer.
6. **Mac Compatibility Note:** If you intend to use the keypad with a Mac, you must perform the initial configuration on a Windows PC. Once configured, the settings are saved to the keypad's internal memory, allowing it to be plug-and-play on Mac OS without further software.

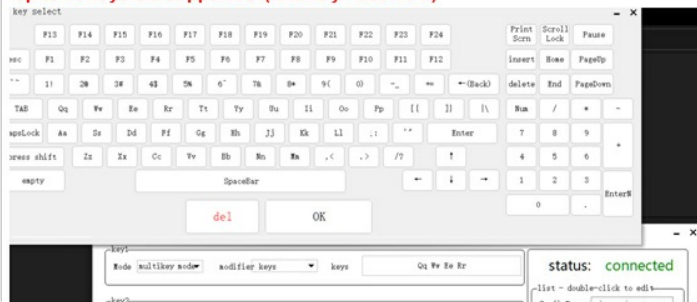


Image: Visual guide for downloading and launching the keypad's configuration software.

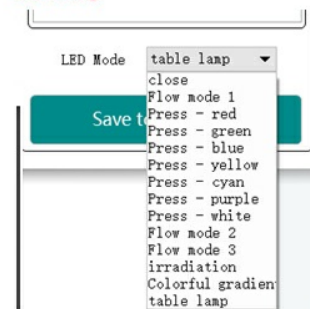
Mouse Mode: Can set the left, middle and right mouse button, move and scroll wheel.



Multi-key Mode: Click the keys you need to input one by one with the mouse. Up to 15 keys are supported. (One-key Password)



LED setting:



Finally, Click the "save to keyboard" button, prompt save successful OK completed!



Image: Detailed screenshots illustrating the software interface for configuring key functions and LED settings.

5. OPERATION

5.1 Keypad Modes

The mini keyboard supports multiple function modes, allowing each button to be set to a different function without affecting others. The four primary modes are:

- **Keyboard Mode:** Assign standard keyboard keys (e.g., letters, numbers, function keys, arrow keys). Supports multiple key combinations (e.g., Ctrl+C).
- **Mouse Mode:** Configure keys for mouse actions such as left click, right click, middle click, mouse movement, and scroll wheel.
- **Multimedia Mode:** Assign multimedia controls like Play/Pause, Stop, Next Track, Previous Track, Volume Up/Down, Mute, and Calculator.
- **Multi-key Mode (Macro):** Create macro operations where a single key press executes a sequence of up to 15 keys. You can also add an interval time between key presses, useful for complex commands or password entry.

5.2 RGB Lighting Control

The RGB LED backlight can be individually adjusted using the configuration software. You can set the key press action display mode and toggle the lighting on/off. Various lighting effects are available, including constantly bright, slowly changing color, and different flow modes.



**Default LED Colorful gradient mode:
constantly bright and slowly changing color.**

Image: The keypad displaying various RGB LED lighting effects, including different solid colors and gradient modes.

5.3 Keycap and Switch Replacement

The QINIZX Mini Keypad features hot-swappable switches, allowing you to easily replace the default Red switches with other compatible 3-pin or 5-pin mechanical switches (e.g., Cherry MX style). Keycaps are also replaceable, suitable for standard Cherry keyboard keycaps.



Image: An exploded view showing the internal PCB, a hot-swappable switch, and a keycap, illustrating the modular design.

6. MAINTENANCE

- Keep the keypad clean by wiping it with a soft, dry cloth. Avoid using harsh chemicals or abrasive materials.
- Ensure the USB-C cable is properly connected and not strained to prevent damage to the port.
- If keys stop working after a drop or reinstallation, check the two wire contacts at the bottom of each key. Ensure they are aligned straight and facing outward for proper connection.

7. TROUBLESHOOTING

- **Keypad not recognized / Software not connecting:**
 - Ensure the USB cable is securely connected to both the keypad and the computer.
 - Try connecting the keypad to a different USB port on your computer.
 - Reboot your computer and try again.

- Temporarily disable any antivirus or firewall software that might be blocking the configuration software.
- **Keys not responding but LEDs are on:**
 - This may indicate a software configuration issue or a hardware malfunction. Re-run the configuration software and ensure settings are saved.
 - If the issue persists, ensure the switches are properly seated in their sockets.
- **RGB lighting not working as expected:**
 - Use the configuration software to adjust LED settings. Ensure the desired lighting mode is selected and saved to the keypad.

8. WARRANTY AND SUPPORT

For product support, technical assistance, or warranty inquiries, please contact the manufacturer QINIZX through the platform where the product was purchased. Keep your purchase receipt as proof of purchase for any warranty claims.

The product typically comes with a standard manufacturer's warranty covering defects in materials and workmanship. Please refer to the specific warranty terms provided at the time of purchase.