

## Manuals+

[Q & A](#) | [Deep Search](#) | [Upload](#)

manuals.plus /

- › [XLUX](#) /
- › [XLUX Long Probe Soil Moisture Meter \(Model T9178#2\) User Manual](#)

### XLUX T9178#2

# XLUX Long Probe Soil Moisture Meter (Model T9178#2) User Manual

Your guide to maintaining optimal soil moisture for healthy plants.

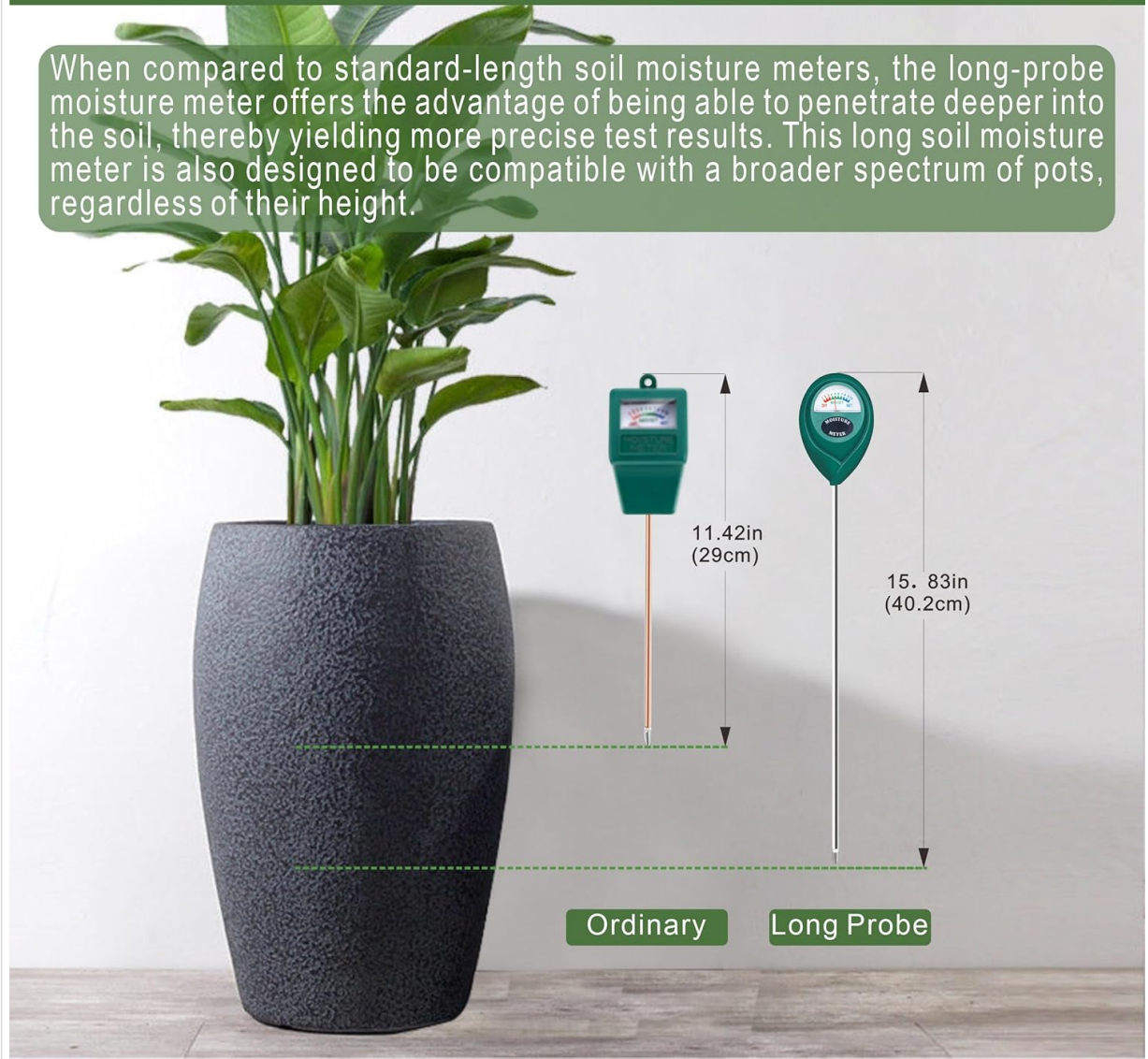
## 1. PRODUCT OVERVIEW

---

The XLUX Long Probe Soil Moisture Meter (Model T9178#2) is designed to accurately measure the moisture content deep within the soil of your plants. Unlike surface-level checks, this meter's extended 5.5-inch (14 cm) probe allows for precise readings at the root level, crucial for larger pots and deeper garden beds. It helps prevent both overwatering and underwatering, promoting healthier plant growth.

## Why you need a Long Probe soil moisture meter?

When compared to standard-length soil moisture meters, the long-probe moisture meter offers the advantage of being able to penetrate deeper into the soil, thereby yielding more precise test results. This long soil moisture meter is also designed to be compatible with a broader spectrum of pots, regardless of their height.



**Image 1:** The XLUX Long Probe Soil Moisture Meter (right) features a 15.83-inch (40.2 cm) probe, significantly longer than ordinary 11.42-inch (29 cm) probes (left), allowing it to reach deeper into large plant pots for more accurate moisture readings.

This device is suitable for a wide range of applications, including indoor potted plants, outdoor gardens, and even farming. Its simple, battery-free design ensures ease of use and reliability.

## 2. SETUP

The XLUX Soil Moisture Meter requires no batteries or complex setup. It is ready for immediate use straight out of the packaging.

1. **Unpack:** Carefully remove the moisture meter from its packaging.
2. **Inspect:** Check the probe tip for any debris or damage. Ensure it is clean before first use.

## 3. OPERATION

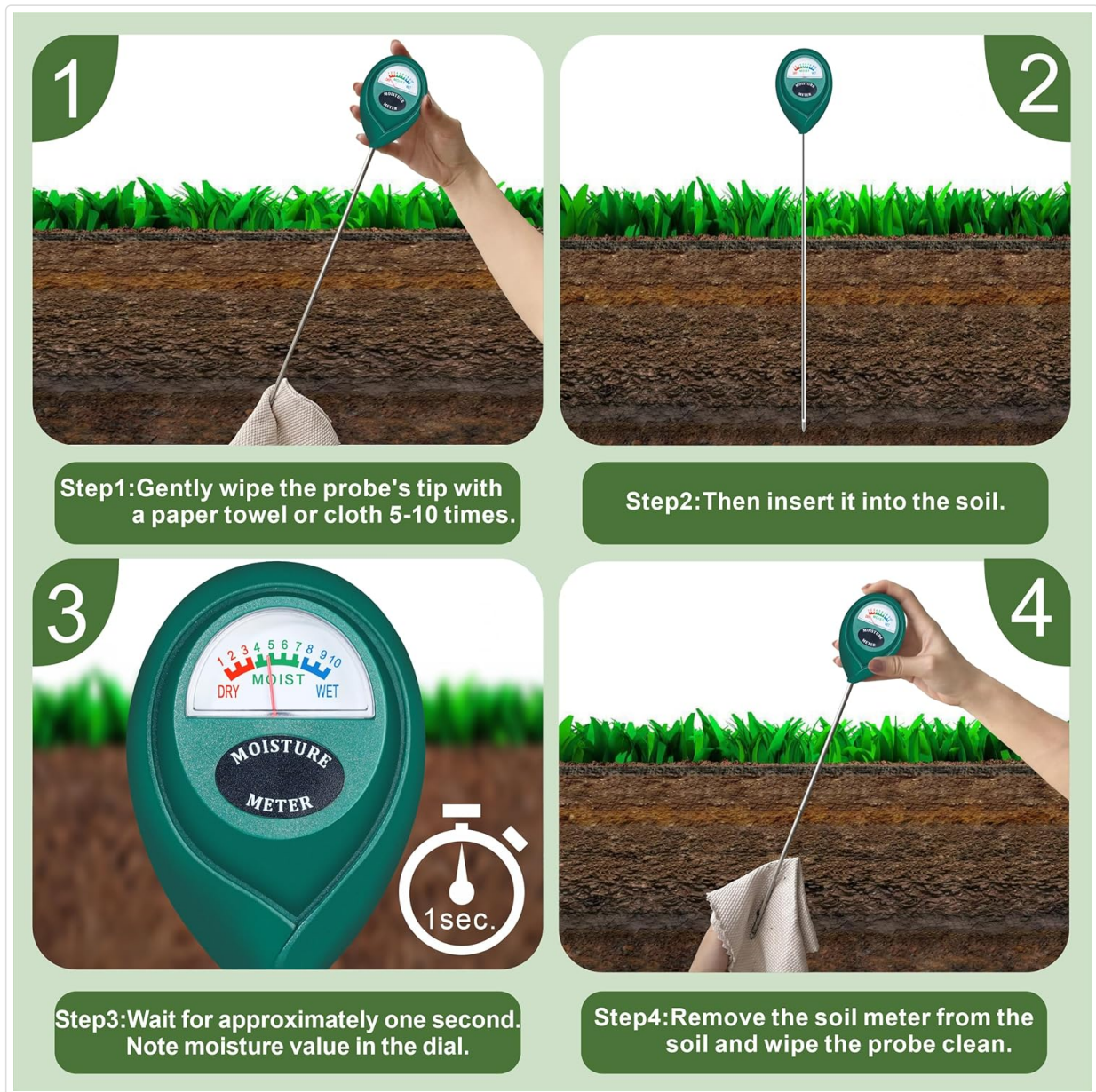
Follow these simple steps to get an accurate soil moisture reading:

1. **Clean the Probe:** Gently wipe the probe's tip with a paper towel or cloth 5-10 times to ensure it is clean and free of residue.
2. **Insert into Soil:** Insert the metal probe into the soil, pushing it down to the desired depth (typically near the

plant's roots). Avoid forcing it into very hard soil to prevent damage.

3. **Read the Dial:** Wait for approximately one second. The dial will immediately display the moisture level.

4. **Remove and Clean:** After taking the reading, remove the meter from the soil and wipe the probe clean with a cloth. This prevents corrosion and ensures accuracy for future uses.

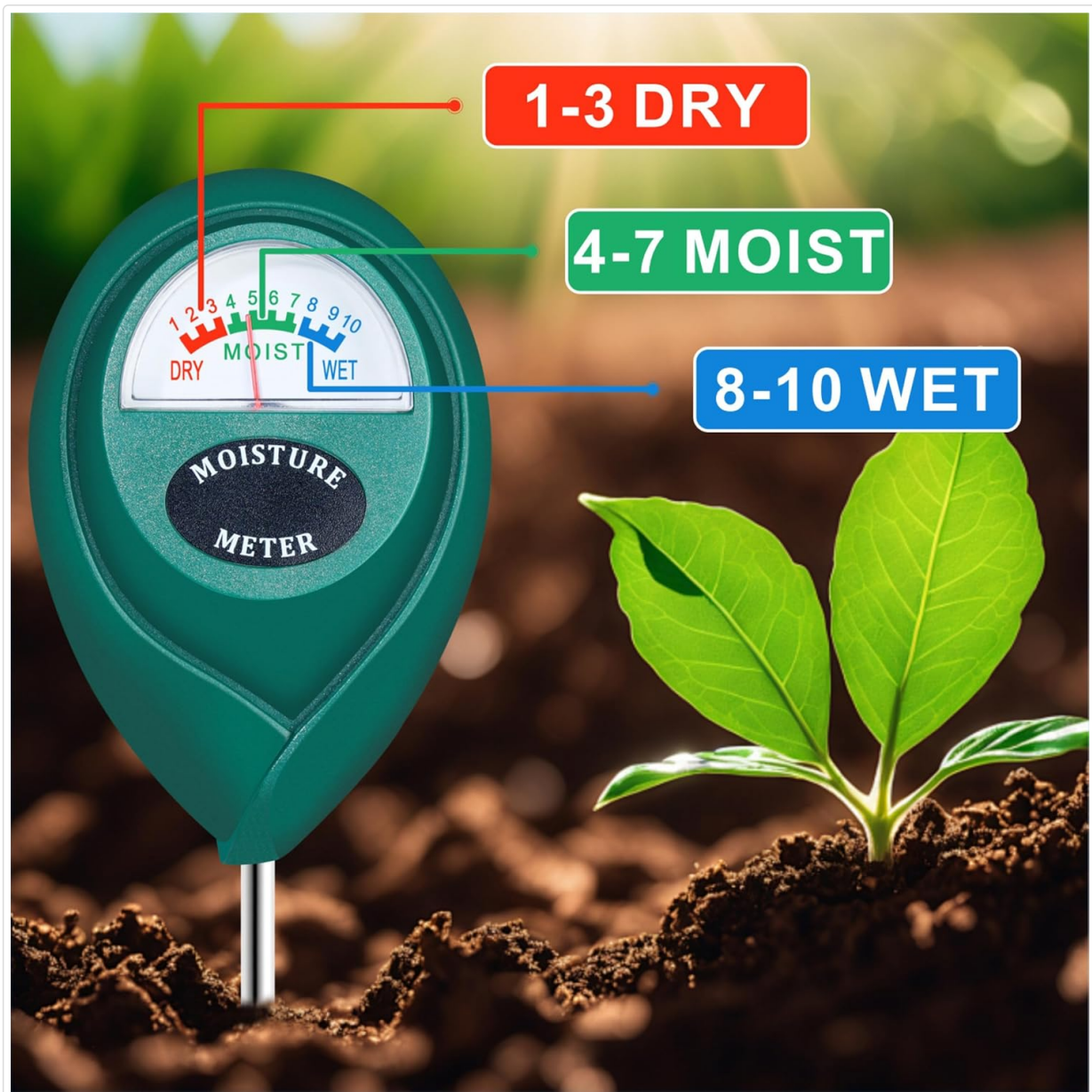


**Image 2:** Step-by-step instructions for using the XLUX Soil Moisture Meter, showing how to clean the probe, insert it into the soil, read the immediate moisture value on the dial, and then remove and clean the probe.

## 4. UNDERSTANDING READINGS

The large, easy-to-read dial features three distinct zones to help you interpret moisture levels:

- **Red Zone (1-3 DRY):** Indicates that the soil is dry and the plant likely needs watering.
- **Green Zone (4-7 MOIST):** Indicates optimal moisture levels. Most plants thrive in this range.
- **Blue Zone (8-10 WET):** Indicates that the soil is wet. Avoid watering to prevent root rot.



**Image 3:** A detailed view of the moisture meter's dial, clearly marking the "DRY" (red, 1-3), "MOIST" (green, 4-7), and "WET" (blue, 8-10) ranges for easy interpretation of soil conditions.

## 5. USAGE PRECAUTIONS

To ensure the longevity and accuracy of your XLUX Soil Moisture Meter, please observe the following precautions:

- **Avoid Hard Soil:** Do not use the meter to test very hard soil or rocky ground, as this can bend or damage the probe.
- **Not for Liquids:** This device is designed for soil moisture measurement only. Do not use it to test water or other liquids.
- **Temporary Insertion:** Do not leave the moisture meter in the soil for more than 5 minutes. Prolonged exposure can lead to gradual corrosion of the metal tip, affecting its accuracy and lifespan.
- **Clean After Each Use:** Always wipe the probe clean after each use to remove soil particles and moisture, preventing corrosion.



**1** Never use it to test water



**2** Never use it to test liquid



**3** Never touch the stone or hard rock soil



**4** Do not leave this moisture meter in the soil for more than 5 minutes.

**Image 4:** Visual guide to important usage precautions, illustrating that the meter should not be used in water or other liquids, should not be forced into hard soil, and should not be left in the soil for extended periods to prevent damage and corrosion.

## 6. MAINTENANCE

Proper maintenance will extend the life of your moisture meter:

- **Regular Cleaning:** Always clean the probe thoroughly after each use.
- **Storage:** Store the meter in a dry place at room temperature when not in use.
- **Avoid Impact:** Handle the meter with care to avoid bending or breaking the probe.

## 7. TROUBLESHOOTING

If you encounter issues with your XLUX Soil Moisture Meter, consider the following:

- **No Reading/Inaccurate Reading:**
  - Ensure the probe is clean. Residue can interfere with conductivity.
  - Make sure the probe is inserted deep enough into the soil to reach the root zone.
  - If the soil is extremely dry, the meter may show a very low reading or no movement. Try watering a small amount and retesting after 20-30 minutes.
  - Avoid inserting into overly compacted or rocky soil, which can prevent proper contact.

- **Probe Damage:** If the probe is bent or broken, discontinue use.

## 8. SPECIFICATIONS

---

<b>Model Number</b>	T9178#2
<b>Probe Length</b>	Approximately 15.83 inches (40.2 cm)
<b>Measurement Range</b>	1 (DRY) to 10 (WET)
<b>Indicators</b>	DRY (Red), MOIST (Green), WET (Blue)
<b>Power Source</b>	No batteries required
<b>Item Weight</b>	0.32 ounces
<b>Package Dimensions</b>	16.14 x 2.64 x 1.85 inches

## 9. WARRANTY & SUPPORT

---

For warranty information or product support, please refer to the contact details provided with your purchase or visit the official XLUX website. Keep your purchase receipt for any warranty claims.