

Manuals+

[Q & A](#) | [Deep Search](#) | [Upload](#)

manuals.plus /

> [SMALLRIG](#) /

> [SmallRig Baseplate 3666B for Sony Alpha 7 V / A7R V / A7 IV Instruction Manual](#)

SMALLRIG 3666B

SmallRig Baseplate 3666B Instruction Manual

Model: **3666B** | Brand: **SMALLRIG**

1. INTRODUCTION

The SmallRig Baseplate 3666B is designed to enhance the ergonomics and functionality of your Sony Alpha 7 V, Alpha 7R V, or Alpha 7 IV camera. This baseplate provides an improved grip, facilitates quick transitions between various shooting setups, and offers additional protection for the camera's bottom. Its robust design integrates seamlessly with the camera body, ensuring stability and convenience for professional and enthusiast photographers alike.

Compatibility: This baseplate is specifically designed for Sony Alpha 7 V, Alpha 7R V, and Alpha 7 IV cameras.

2. PRODUCT FEATURES

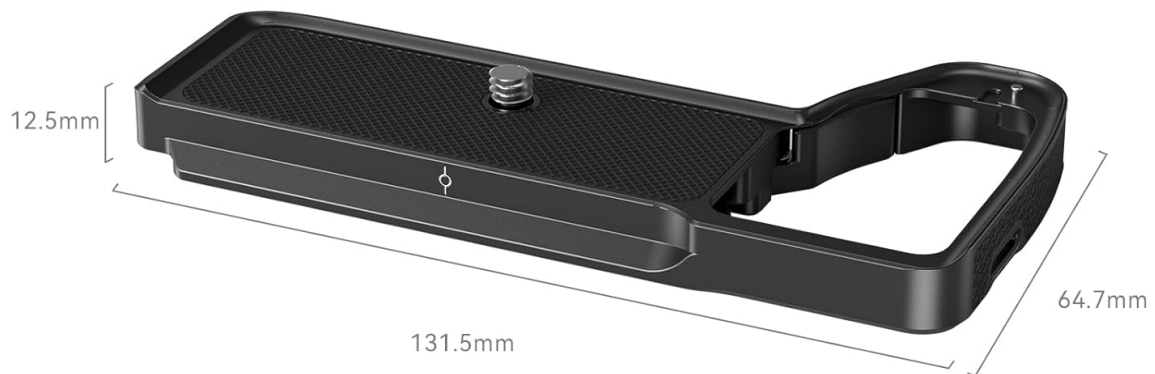
- **Enhanced Grip:** Optimizes the camera's grip, providing a more comfortable hold, especially for users with larger hands, and preventing the little finger from slipping off.
- **Patented Foldable Wrench:** Features an integrated, durable, and stable wrench for easy access to the battery compartment without needing to remove the baseplate.
- **Premium Material:** Embedded with carefully selected first-layer cowhide, offering a high-quality texture that integrates with the camera body.
- **Multiple Installation Points:** Equipped with a QD interface, 1/4"-20 threaded holes (18mm spacing), and cold shoes at the bottom for expanding with accessories like QD shoulder straps, mini tripods, and microphones.
- **Arca-Swiss Quick Release Plate:** Allows for rapid switching between tripod, DJI RS 3/RS 3 Pro/RS 2/RSC 2 stabilizer, and handheld shooting modes.
- **Anti-Scratch & Anti-Deflection:** Secures to the camera with 1/4"-20 screws and a positioning pin, featuring built-in protective gaskets to prevent scratching and twisting of the camera.

3. PACKAGE CONTENTS

- SmallRig Baseplate 3666B x 1

In the Box

Baseplate × 1



Product Parameter

Brand
SmallRig

Compatibility
For Sony Alpha 7R V /
Alpha 7 IV

Material(s)
Aluminum Alloy, Stainless Steel,
Silicone, Genuine Leather

ID
3666B

Product Dimensions
131.5 × 64.7 × 12.5mm

Net Weight
80 ± 5g

Figure 3.1: Diagram showing the contents of the SmallRig Baseplate 3666B package and key product dimensions and materials.

4. SETUP AND INSTALLATION

Follow these steps to correctly install the SmallRig Baseplate 3666B onto your compatible Sony Alpha camera.

- 1. Align the Baseplate:** Position the baseplate against the bottom of your Sony Alpha 7 V / A7R V / A7 IV camera, ensuring the 1/4"-20 screw hole and the anti-twist positioning pin align with the corresponding points on the camera.
- 2. Secure the Baseplate:** Use the integrated magnetic flat-head wrench located on the underside of the baseplate to tighten the 1/4"-20 screw into the camera's tripod socket. Tighten until snug, but do not over-tighten. The built-in protective gaskets will prevent scratching.
- 3. Verify Stability:** Gently attempt to twist the baseplate to ensure it is securely attached and there is no deflection.
- 4. Battery Access:** The baseplate features a patented foldable wrench mechanism near the battery compartment. To access the battery, simply open this wrench to allow the camera's battery door to fully open. Close the wrench after replacing the battery.

Perfectly Fit for Sony A7R V / A7 IV

Perfectly fit the curve of the fuselage,
making your little finger feel more comfortable when holding it



Figure 4.1: SmallRig Baseplate 3666B attached to a Sony Alpha camera, illustrating the ergonomic fit and improved grip.

Patented Foldable Wrench

The foldable wrench is durable, stable, and does not loosen. It does not affect the battery replacement and the overall fit while maintaining a good grip

Step 1



Step 2



Figure 4.2: Close-up view of the foldable wrench, demonstrating how it allows access to the camera's battery compartment.

Anti-Scratch & Anti-Deflection

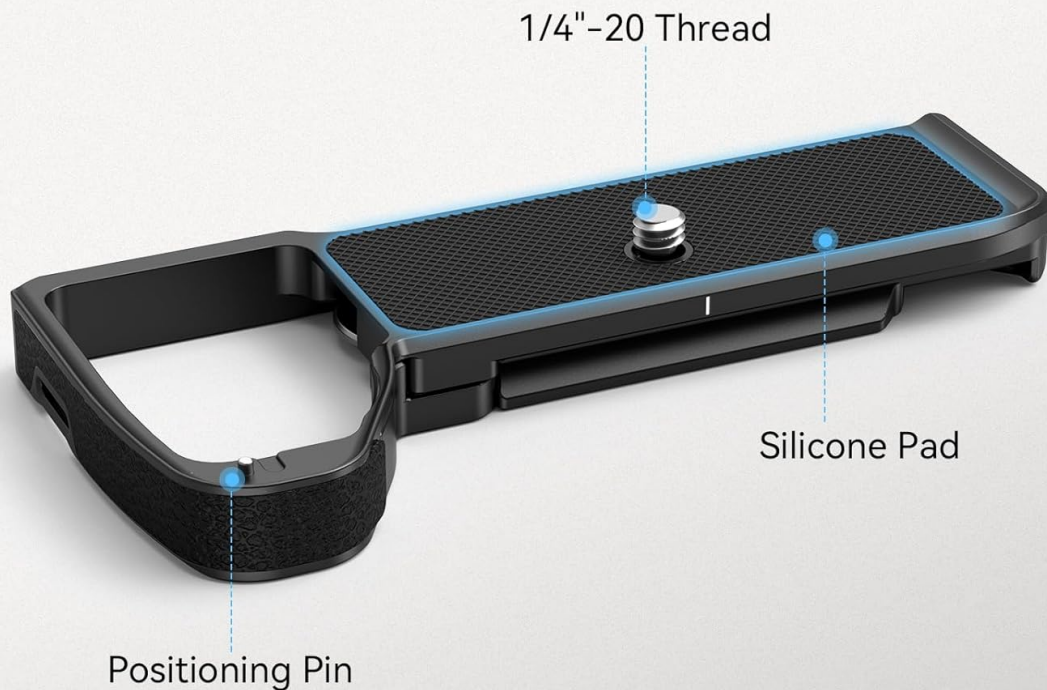


Figure 4.3: Underside of the baseplate showing the 1/4"-20 thread, silicone pads, and positioning pin for secure, anti-scratch attachment.

Your browser does not support the video tag.

Video 4.1: Demonstration of the SmallRig Baseplate 3666B installation and its benefits for improved camera grip and battery access on a Sony A7V camera.

5. OPERATING INSTRUCTIONS

The SmallRig Baseplate 3666B offers versatile mounting options for various shooting scenarios.

- **Arca-Swiss Quick Release:** The integrated Arca-Swiss plate on the bottom allows for quick and easy mounting onto compatible tripods and stabilizers (e.g., DJI RS 3/RS 3 Pro/RS 2/RSC 2). Simply slide the camera with the baseplate into the Arca-Swiss clamp and secure it.
- **QD Interface:** Use the QD (Quick Detach) socket to attach QD-compatible camera straps for secure and rapid strap attachment and removal.
- **1/4"-20 Threaded Holes:** Utilize the multiple 1/4"-20 threaded holes to attach various accessories such as mini tripods, magic arms, or other mounting solutions.
- **Cold Shoe Mount:** The cold shoe mount provides a convenient attachment point for accessories like microphones, LED lights, or external monitors.

Quick Release Plate for Arca

Quick switch among tripod, stabilizer and handheld shooting mode



Figure 5.1: The quick release plate for Arca enables seamless transitions between handheld, stabilizer, and tripod shooting modes.

Multiple Installation Points

Designed for QD shoulder straps, mini tripods, microphones and other accessories.

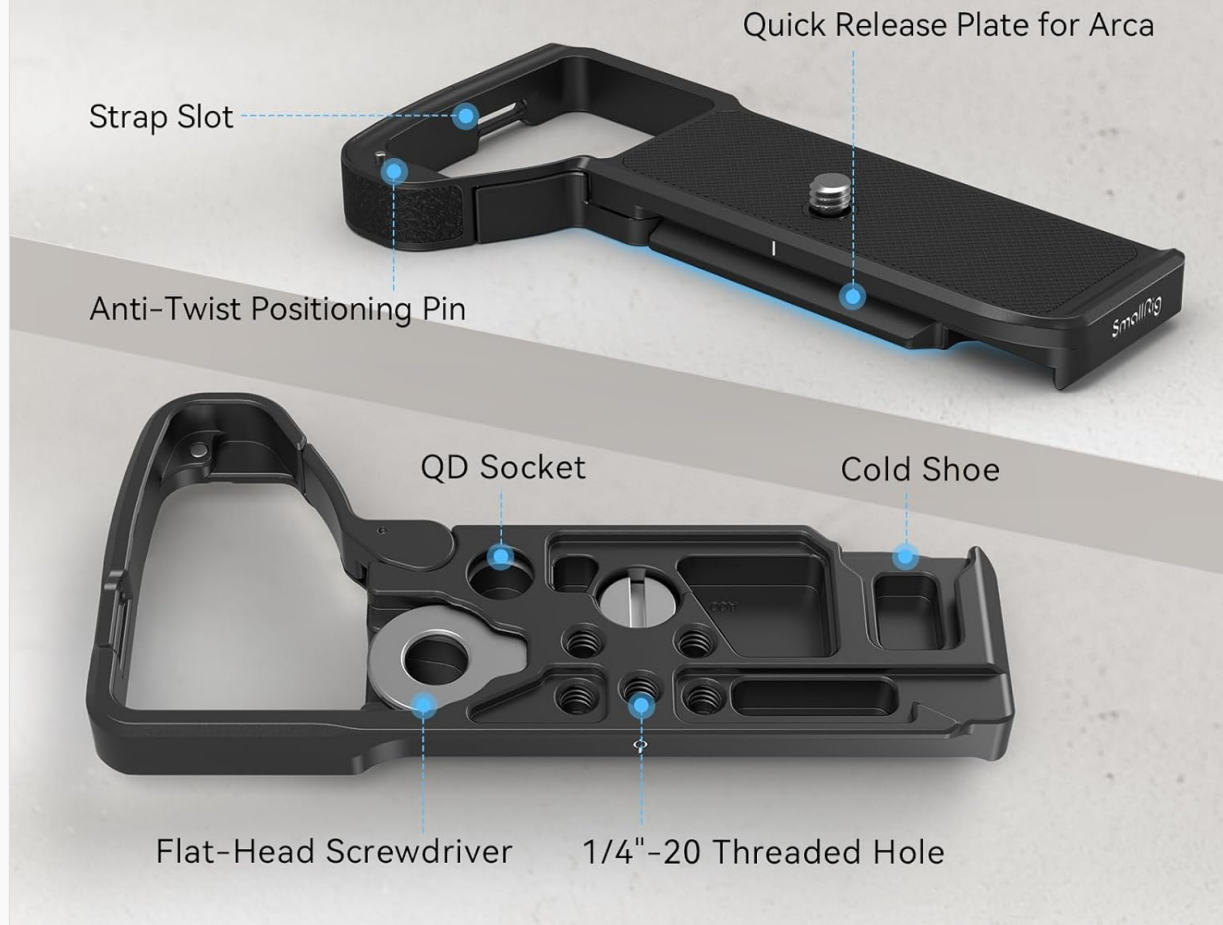


Figure 5.2: Overview of the baseplate's multiple installation points, including the QD socket, 1/4"-20 threaded holes, and cold shoe.

6. MAINTENANCE

To ensure the longevity and optimal performance of your SmallRig Baseplate 3666B, follow these maintenance guidelines:

- **Cleaning:** Wipe the baseplate with a soft, dry cloth to remove dust and fingerprints. For stubborn dirt, a slightly damp cloth can be used, followed by immediate drying. Avoid harsh chemicals or abrasive materials.
- **Storage:** Store the baseplate in a dry, clean environment away from extreme temperatures and direct sunlight when not in use.
- **Inspection:** Periodically check all screws and connection points for tightness. Re-tighten if necessary using the magnetic wrench.

7. TROUBLESHOOTING

- **Difficulty Accessing Battery:** If the camera's battery door is obstructed, ensure the patented foldable wrench on the baseplate is fully opened. This mechanism is designed to provide clearance for battery changes without removing the entire baseplate.

- **Baseplate Feels Loose:** If the baseplate feels loose or wobbly on the camera, ensure the 1/4"-20 mounting screw is securely tightened using the magnetic wrench. Also, confirm that the anti-twist positioning pin is correctly engaged with the camera body.
- **Accessories Not Attaching Securely:** Check that the accessories you are trying to attach are compatible with the QD interface, 1/4"-20 threads, or cold shoe mount. Ensure all accessory screws are tightened appropriately.

8. SPECIFICATIONS

| Specification | Detail |
|--------------------------------|--|
| Model | 3666B |
| Brand | SMALLRIG |
| Color | Black |
| Compatible Devices | Sony Alpha 7 V / Alpha 7R V / Alpha 7 IV |
| Product Dimensions (D x W x H) | 5.2"D x 2.56"W x 0.49"H (131.5 x 64.7 x 12.5 mm) |
| Item Weight | 80 Grams |
| Maximum Weight Recommendation | 135 Grams |
| Materials | Aluminum Alloy, Stainless Steel, Silicone, Genuine Leather |

9. WARRANTY AND SUPPORT

SmallRig products are manufactured to high-quality standards. This product is covered by the manufacturer's standard warranty. For specific warranty details, technical support, or service inquiries, please refer to the official SmallRig website or contact their customer service directly.

Online Resources: For additional information, product updates, and FAQs, please visit the official SmallRig website: www.smallrig.com