

Manuals+

[Q & A](#) | [Deep Search](#) | [Upload](#)

[manuals.plus](#) /

- › [OVE Decors](#) /
- › [OVE Decors 60x32 Inch Rectangle Shower Base Pan Instruction Manual, Model 15SSB-603260-000WM](#)

OVE Decors 15SSB-603260-000WM

OVE Decors 60x32 Inch Rectangle Shower Base Pan Instruction Manual

Model: 15SSB-603260-000WM

INTRODUCTION

This manual provides comprehensive instructions for the installation, operation, and maintenance of your OVE Decors 60x32 inch rectangle shower base pan. This shower base is constructed from fiberglass-reinforced acrylic, featuring an anti-skid texture and a hidden side drain. It is designed for versatile installation with left or right orientation.

- Side hidden drain
- Acrylic base with fiberglass reinforcement
- Anti-skid textured base
- Low profile 7 cm (2.76 in.) base



Image: Top-down view of the OVE Decors 60x32 inch white acrylic shower base pan, showcasing its rectangular shape and low profile.

SETUP AND INSTALLATION

Proper installation is crucial for the longevity and performance of your shower base. Ensure all local plumbing and building codes are followed. Professional installation is recommended.

Pre-Installation Checks

- Verify that the shower base dimensions (60 x 32 inches) match your rough-in opening.
- Inspect the product for any damage prior to installation.
- Ensure the subfloor is level and structurally sound to support the shower base and user weight.

Installation Steps

1. **Prepare the Area:** Clear the installation area. Ensure plumbing for the drain is correctly positioned for the side drain configuration.
2. **Leveling:** Apply a mortar bed or concrete mixture to the subfloor where the shower base will rest. This provides solid support and ensures the base is level.
3. **Position the Base:** Carefully place the shower base into the prepared area, pressing it firmly into the mortar bed. Verify that the base is level in all directions.
4. **Secure Side Flaps:** The shower base features side flanges designed to be secured to the wall studs. Apply a waterproof sealant (caulk) along these flanges before attaching them to the studs. This prevents water leakage between the wall and the base.
5. **Connect the Drain:** Install the drain assembly according to the manufacturer's instructions for the drain kit (sold separately). Ensure a watertight seal.
6. **Wall Preparation:** Once the base is secured, proceed with installing wall backer board and waterproofing membranes, ensuring they overlap the shower base flanges to create a continuous waterproof barrier.



Image: Shower base positioned within a framed shower enclosure, illustrating the side flanges ready for attachment to wall studs.



Image: Detailed view of the shower base's perimeter, showing the integrated side flange designed for sealing and securing to the shower walls.

OPERATING AND FEATURES

The OVE Decors shower base is designed for user comfort and ease of maintenance.

- **Anti-Skid Surface:** The base features a textured surface to enhance safety and reduce the risk of slipping during use.
- **Hidden Side Drain:** A unique hidden side drain design provides a clean, minimalist aesthetic. The drain cover can be removed for cleaning and access to the drain.



Image: A close-up view of the shower base's hidden side drain, showing the removable cover that conceals the drain opening.

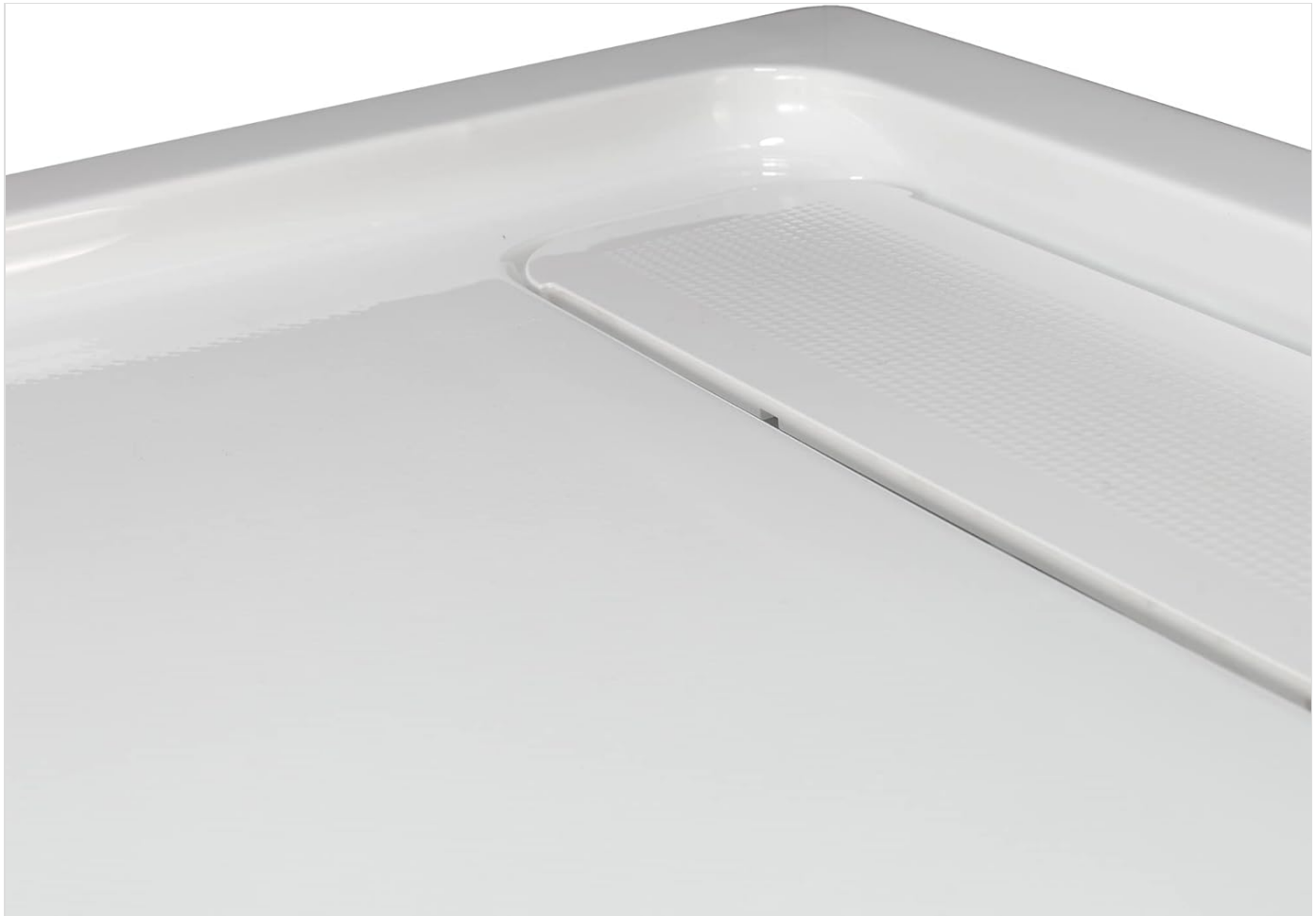


Image: The hidden side drain area with the cover removed, exposing the drain opening for maintenance or cleaning.

MAINTENANCE

To maintain the appearance and functionality of your shower base, regular cleaning is recommended.

- Clean the acrylic surface with a soft cloth and non-abrasive, mild bathroom cleaner. Avoid harsh chemicals or abrasive scrubbers, which can damage the finish.
- Periodically remove the hidden drain cover and clean any debris from the drain opening to ensure proper water flow.
- Inspect sealant around the edges of the base regularly and reapply if any signs of wear or cracking are observed.

TROUBLESHOOTING

This section addresses common issues you might encounter with your shower base.

Problem	Possible Cause	Solution
Water pooling in the base	Improper leveling during installation or clogged drain.	Verify the base is level. Clear any debris from the drain. If leveling is incorrect, professional re-installation may be required.
Leakage around the base perimeter	Compromised sealant or improper installation of side flanges.	Inspect and reapply waterproof sealant (caulk) where necessary. Ensure wall backer board and waterproofing overlap the flanges correctly.
Slow drainage	Hair or debris obstructing the drain.	Remove the hidden drain cover and clear any obstructions from the drain.

SPECIFICATIONS

Feature	Detail
Brand	OVE Decors
Model Number	15SSB-603260-000WM
Dimensions (W x D x H)	60 x 31.85 x 32.01 inches
Size	60 x 32 inches
Item Weight	45 pounds
Color	White
Style	Side Drain
Material	Plastic (Acrylic with fiberglass reinforcement)
Shape	Rectangular
Installation Method	Screw-In
Included Components	Shower Base
Manufacturer	Ove Decors
Date First Available	July 19, 2019

WARRANTY INFORMATION

The OVE Decors 60x32 Inch Rectangle Shower Base Pan comes with a**5-year limited manufacturer warranty**. For specific terms and conditions, please refer to the warranty documentation included with your purchase or contact OVE Decors customer support.

CUSTOMER SUPPORT

For further assistance, product inquiries, or support, please visit the official OVE Decors store or contact their customer service department.

OVE Decors Store: [Visit the OVE Decors Store on Amazon](#)