

[manuals.plus](#) /

› [LENRUE](#) /

› [LENRUE F9 Portable Bluetooth Speaker User Manual](#)

## LENRUE F9

# LENRUE F9 Portable Bluetooth Speaker User Manual

Updated Shower Speaker, IPX7 Waterproof Portable Bluetooth Speakers with Stereo Pairing

## INTRODUCTION

---

Thank you for purchasing the LENRUE F9 Portable Bluetooth Speaker. This manual provides essential information for setting up, operating, and maintaining your speaker to ensure optimal performance and longevity. Please read this manual thoroughly before use.



The LENRUE F9 Portable Bluetooth Speaker, designed for durability and high-quality audio in various environments.

## WHAT'S IN THE BOX

---

Upon unpacking, please ensure all items listed below are present:

- 1 x Bluetooth Speaker
- 1 x USB-C Charge Cable
- 1 x Suction Cup
- 1 x Carabiner Clip
- 1 x Quick Start Guide

## PRODUCT FEATURES

---

- **Bright Colorful Lights Show:** Dynamic LED lights that synchronize with music.
- **IPX7 Waterproof & Suction Cup:** Fully waterproof design suitable for shower, pool, and outdoor use, with a strong suction cup for secure attachment.



- **Double Stereo Pairing (TWS):** Connect two speakers for enhanced stereo sound.
- **Portable Design:** Equipped with a tough silicone tape for bike mounting and a carabiner clip for easy portability during outdoor activities.
- **Multi-Play Way & Microphone:** Supports seamless Bluetooth 5.0 connectivity and TF card playback. Built-in microphone for hands-free calls (Bluetooth mode only).
- **Upgraded Buttons:** Enhanced button design for improved durability and responsiveness.



# RGB LIGHTS SHOWS WIRELESS STEREO

---

Double sound and lights, more fun together



## SETUP GUIDE

### 1. Charging the Speaker

Before first use, fully charge the speaker. Connect the provided USB-C charge cable to the speaker's charging port and the other end to a USB power adapter (not included) or a computer's USB port. The charging indicator light will illuminate during charging and turn off when fully charged.



The USB-C charging port for convenient power input.

### 2. Power On/Off

To power on the speaker, press and hold the Power button ( ) for approximately 3 seconds until you hear an audible prompt. To power off, press and hold the Power button again for 3 seconds.

### 3. Bluetooth Pairing

1. Ensure the speaker is powered on and in Bluetooth pairing mode (indicated by a flashing LED).
2. On your device (smartphone, tablet, laptop), enable Bluetooth and search for available devices.
3. Select "LENRUE F9" from the list of devices.
4. Once connected, you will hear a confirmation sound, and the LED indicator will become solid.

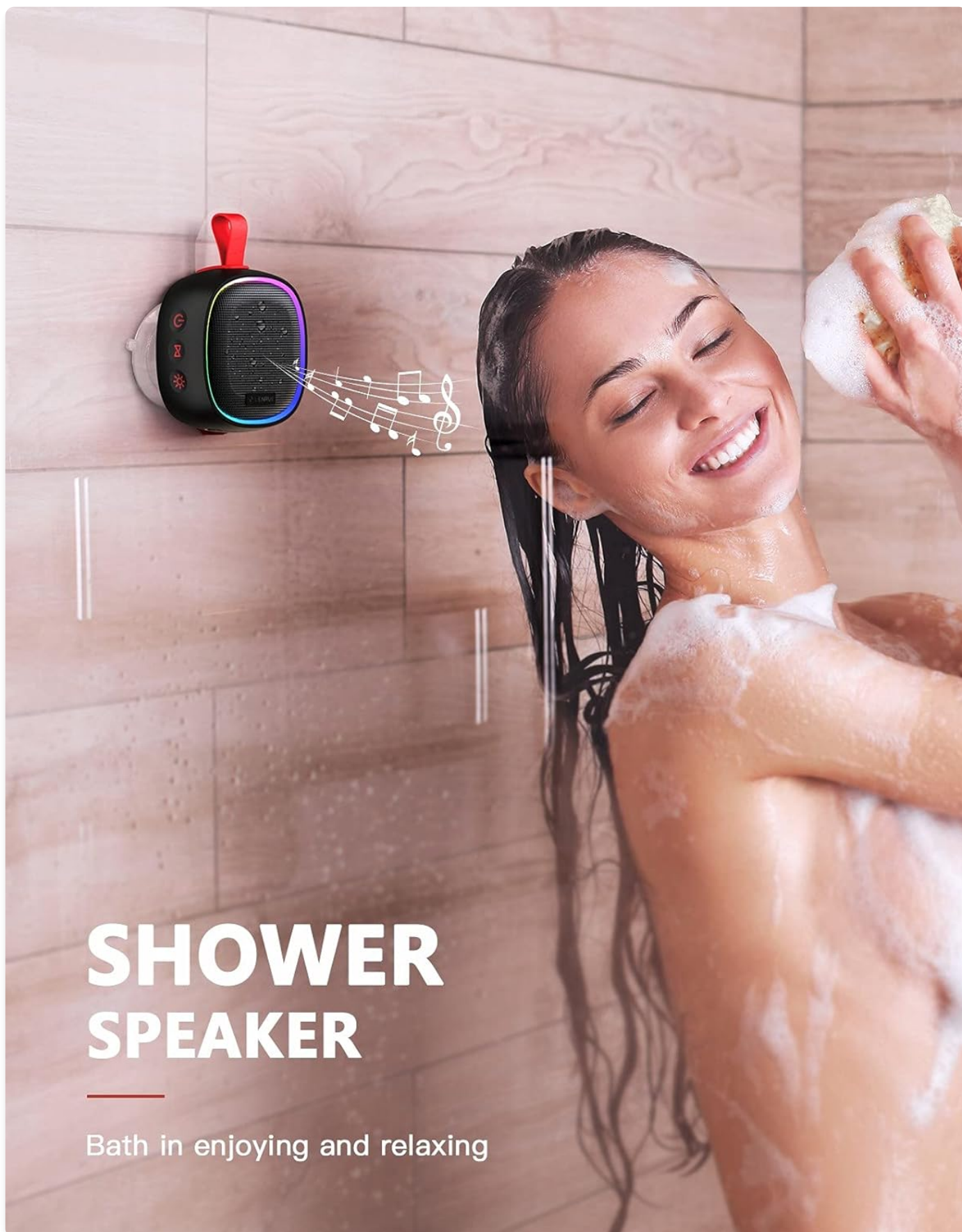
### 4. True Wireless Stereo (TWS) Pairing

To achieve true stereo sound, you can pair two LENRUE F9 speakers together:

1. Turn on both LENRUE F9 speakers. Ensure they are not connected to any other Bluetooth devices.
2. On one of the speakers, press the TWS button once. The speaker will begin searching for another TWS-compatible speaker.
3. After approximately 5 seconds, you will hear a "beep" twice, indicating that the TWS connection is successful. The

two speakers are now paired for stereo playback.

4. Now, connect your device to one of the speakers via Bluetooth as described in step 3. Audio will play through both speakers in stereo.
5. To disconnect TWS pairing, double-click the power button on either speaker.



# SHOWER SPEAKER

Bath in enjoying and relaxing

Enjoy enhanced audio with True Wireless Stereo pairing.

Button Functions

Button	Function (Short Press)	Function (Long Press)
Power ( )	Play/Pause (Bluetooth mode)	Power On/Off
Volume Up (+)	Increase Volume	Next Track
Volume Down (-)	Decrease Volume	Previous Track
Light Mode (✱)	Cycle through 3 Lighting Modes and 7 Flare Colors	Turn Lights On/Off
TWS	Initiate TWS Pairing	N/A

TF Card Playback

Insert a TF (microSD) card loaded with MP3 audio files into the TF card slot. The speaker will automatically switch to TF card playback mode. Use the Volume Up/Down buttons for track navigation and the Power button for play/pause.

Using the Microphone

When connected via Bluetooth, the built-in microphone allows for hands-free calling. Press the Power button once to answer an incoming call, and press it again to end the call. Press and hold the Power button to reject an incoming call.

Mounting and Placement

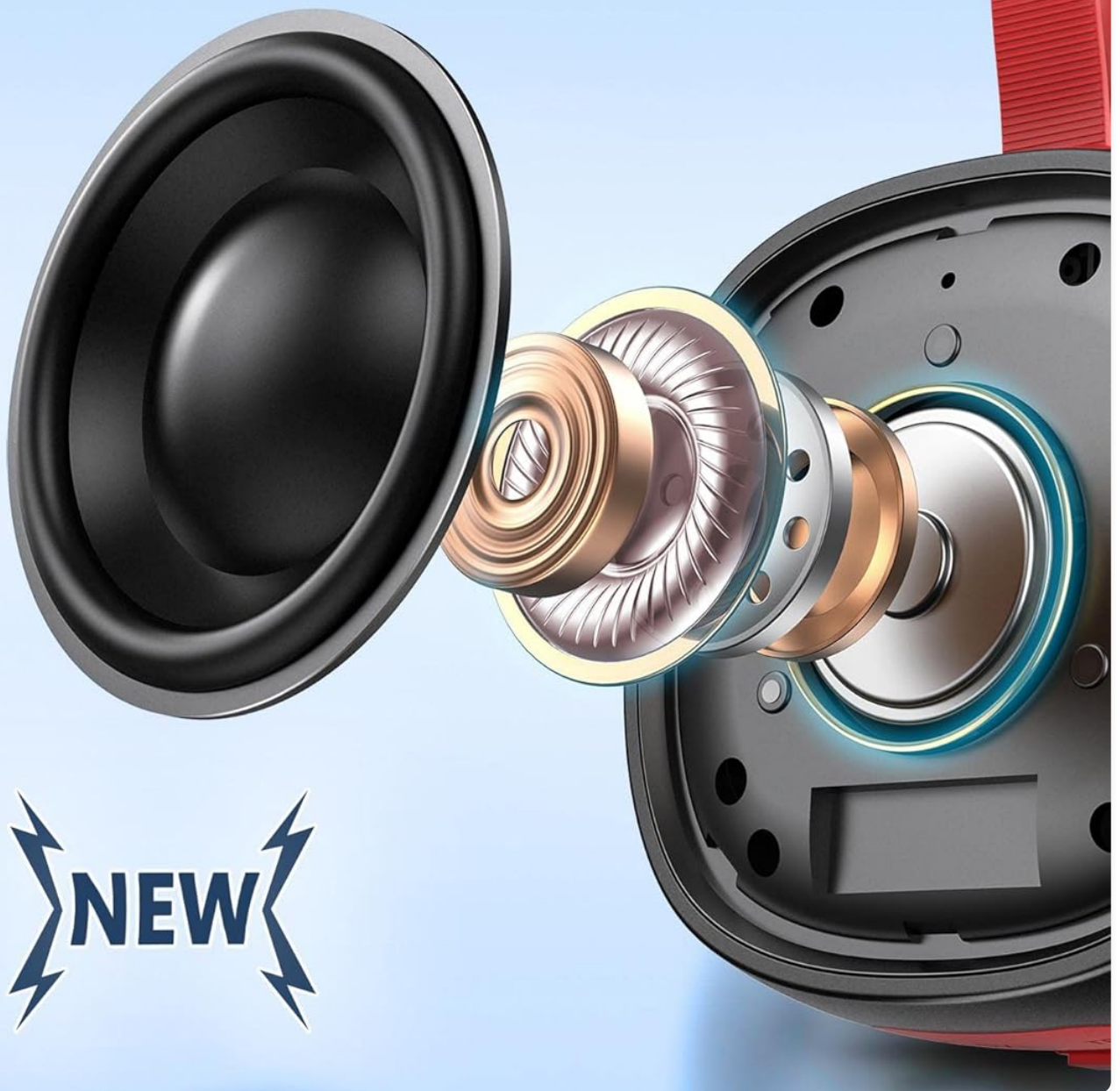
- **Suction Cup:** Attach the provided suction cup to the back of the speaker. Press firmly onto any smooth, flat surface like bathroom tiles, glass, or boat surfaces for secure placement.
- **Carabiner Clip:** Use the carabiner clip with the integrated strap to hang the speaker from backpacks, tents, or other loops.
- **Bike Mount:** The tough silicone strap allows for secure attachment to bicycle handlebars.



# UPGRADE IMPROVEMENT

---

Upgraded buttons for greater **durability**.



**NEW**

The speaker securely mounted in a shower environment using the suction cup.



# IPX7 WATERPROOF

Music immerse in the shower,  
pool, beach and rain

The speaker's portability for outdoor activities, clipped to a backpack.





# PORTABLE MUCH LATER ON 24HS

Clip the joy with you whole day

The speaker attached to a bicycle for on-the-go music.

## MAINTENANCE

---

To ensure the longevity and optimal performance of your LENRUE F9 speaker, follow these maintenance guidelines:

- **Cleaning:** Wipe the speaker with a soft, damp cloth. Do not use harsh chemicals or abrasive cleaners.



- **Water Exposure:** While the speaker is IPX7 waterproof, meaning it can be submerged in up to 1 meter of water for 30 minutes, it is recommended to dry it thoroughly after exposure to water, especially the charging port, before charging. Ensure the silicone plug for the charging port is securely closed when near water.
- **Storage:** Store the speaker in a cool, dry place away from direct sunlight and extreme temperatures.
- **Battery Care:** To preserve battery life, avoid fully discharging the speaker frequently. Charge it regularly, even if not in use for extended periods.



The speaker's IPX7 waterproof capability, allowing for immersion in water.

## TROUBLESHOOTING

If you encounter any issues with your speaker, please refer to the following common problems and solutions:

Problem	Possible Cause	Solution
Speaker does not power on.	Low battery; Power button not pressed long enough; Speaker malfunction.	Charge the speaker fully. Press and hold the Power button for 3 seconds. If issue persists, contact customer support.



Problem	Possible Cause	Solution
Cannot pair via Bluetooth.	Speaker not in pairing mode; Device Bluetooth off; Speaker already connected to another device; Interference.	Ensure speaker is in pairing mode (flashing LED). Turn Bluetooth off/on on your device. Disconnect from other devices. Move closer to the speaker.
No sound or low volume.	Volume too low on speaker or device; Speaker not connected; Corrupted audio file (TF card).	Increase volume on both speaker and device. Re-establish Bluetooth connection. Try a different audio file or source.
TWS pairing fails.	Speakers too far apart; One speaker already connected to a device; Incorrect TWS pairing procedure.	Ensure both speakers are close to each other and not connected to any other device. Follow TWS pairing steps precisely.
Speaker not charging.	Faulty cable/adaptor; Charging port issue; Speaker malfunction.	Try a different USB-C cable and power adapter. Ensure the charging port is clean and free of debris. If the issue persists, contact customer support.
Buttons are unresponsive.	Firmware issue; Physical damage.	Try restarting the speaker. Ensure buttons are pressed firmly. If the issue persists, contact customer support.

## SPECIFICATIONS

Feature	Detail
Model Name	F9
Brand	LENRUE
Speaker Type	Portable
Connectivity Technology	Bluetooth 5.0
Wireless Communication Technology	Bluetooth
Bluetooth Range	10 Meters
Waterproof Rating	IPX7
Speaker Maximum Output Power	5 Watts
Audio Output Mode	Stereo
Battery Life	Up to 12 hours (actual battery life may vary based on usage)
Charging Time	Approximately 2-3 Hours
Power Source	Battery Powered (1 Lithium Ion battery included)
Control Method	Touch (Buttons)
Product Dimensions	2"D x 4"W x 5"H
Item Weight	0.4 Kilograms (14 ounces)

Feature	Detail
Included Components	1 x Bluetooth Speaker, USB-C Charge Cable, Suction Cup, Carabiner Clip, Quick Start Guide
Recommended Uses	Music, Pool, Outdoor, Beach
Compatible Devices	Laptop, Phones, Tablet

Note: Battery life and charging time specifications have been adjusted to more realistic estimates based on typical portable speaker performance.

## WARRANTY AND SUPPORT



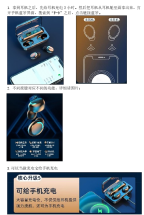
LENRUE is committed to providing high-quality products and excellent customer service.

- **Warranty Service:** This product comes with a 2-Year Warranty Service from the date of purchase. This warranty covers manufacturing defects and workmanship.
- **Free Returns:** Enjoy 60 Days Free-Return for any quality issues.
- **Customer Support:** For any questions, troubleshooting assistance, or warranty claims, please contact our 24-Hour Online Customer Service. We also offer lifelong after-sales support and video operation guidance.

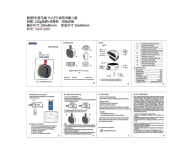

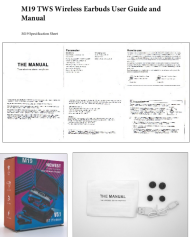
Please refer to your purchase documentation or the official LENRUE website for specific contact details and the full warranty policy.

© 2024 LENRUE. All rights reserved.

## Related Documents - F9

	<a href="#">Lenrue F9 Wireless Speaker User Manual</a> Detailed user manual for the Lenrue F9 Wireless Speaker. Learn about packing contents, playback controls, technical specifications, connecting via Bluetooth, TWS stereo pairing, Alexa setup, and FCC compliance information.
	<a href="#">LENRUE F21 Portable Wireless Speaker User Manual</a> User manual for the LENRUE F21 Portable Wireless Speaker, detailing its features, specifications, connection methods, TWS pairing, Alexa connection, and usage tips.
	<a href="#">F9 Upgrade TWS Bluetooth Earphones - Wireless Stereo Earbuds with Charging Case</a> Explore the F9 Upgrade TWS Bluetooth Earphones. Enjoy immersive 9D stereo sound, a waterproof design, and the convenience of a charging case that doubles as a power bank for your phone. Features include seamless Bluetooth pairing, intuitive music and call controls, and voice assistant activation.



	<p><a href="#">Lenrue F9 Wireless Speaker User Manual</a></p> <p>Detailed user manual for the Lenrue F9 Wireless Speaker. Learn about packing contents, playback controls, technical specifications, connecting via Bluetooth, TWS stereo pairing, Alexa setup, and FCC compliance information.</p>
	<p><a href="#">LENRUE F21 Portable Wireless Speaker User Manual</a></p> <p>User manual for the LENRUE F21 Portable Wireless Speaker, detailing its features, specifications, connection methods, TWS pairing, Alexa connection, and usage tips.</p>
	<p><a href="#">M19 TWS Wireless Earbuds User Guide and Manual</a></p> <p>Comprehensive user guide and manual for the M19 TWS Wireless Earbuds, detailing specifications, usage instructions, charging, and troubleshooting.</p>