

Dermum Dermum S2 Model

Dermum S2 Model Keyless Entry Fingerprint Digital Smart Lock Instruction Manual

Model: Dermum S2 Model | Brand: Dermum

1. INTRODUCTION

This manual provides detailed instructions for the installation, setup, operation, and maintenance of your Dermum S2 Model Keyless Entry Fingerprint Digital Smart Lock. Please read this manual thoroughly before installation and use to ensure proper function and safety. Keep this manual for future reference.

2. SAFETY INFORMATION

- Do not attempt to disassemble or repair the lock yourself. This may void the warranty and cause damage.
- Use only specified AA batteries. Do not mix old and new batteries or different types of batteries.
- Ensure the door is properly aligned and the lock operates smoothly before relying on it for security.
- Keep physical keys in a secure location away from the lock.
- Protect your passcodes and fingerprints from unauthorized access.
- This lock is weather resistant, not waterproof. Avoid direct exposure to heavy rain or submersion.

3. PACKAGE CONTENTS

Verify that all components are present before beginning installation:

- Dermum S2 Model Smart Lock (Exterior and Interior Assemblies)
- Mounting Hardware (Screws, Spindle)
- Strike Plate and Reinforcement
- Key Fobs (2)
- Physical Keys (2)
- Installation Template
- User Manual

4. SPECIFICATIONS

Feature	Detail
Brand	Dermum
Model Name	Dermum S2 Model
Lock Type	Biometric, Combination Lock, Deadbolt, Keypad
Material	Stainless Steel
Color	Black
Item Dimensions (L x W x H)	7 x 3 x 1.2 inches
Item Weight	3.63 Pounds
Power Source	4 AA batteries (not included)
Connectivity	Bluetooth (Wi-Fi with optional gateway)
Control Method	App, Remote, Touch, Voice (with optional gateway)
Special Features	Auto-Lock, One-Touch Lock, Anti-Peeping Password, Back-Lit Keypad, Fingerprint, Fob Unlock, Passcode Unlock, Touchscreen, Weather Resistant

5. INSTALLATION GUIDE

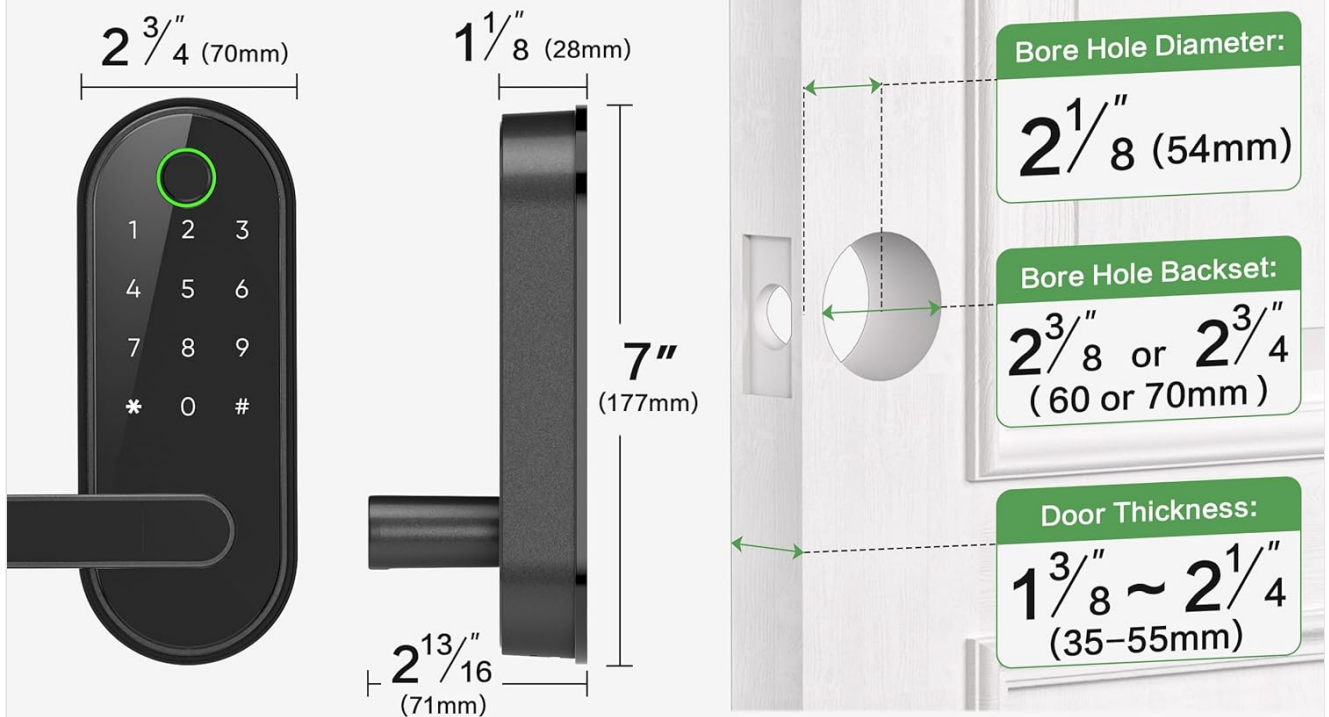
This smart lock is designed for easy installation with a screwdriver. Follow these steps carefully.

5.1. Compatibility Check

Ensure your door meets the following specifications:

- **Bore Hole Diameter:** 2 1/8 inches (54mm)
- **Bore Hole Backset:** 2 3/8 inches or 2 3/4 inches (60mm or 70mm)
- **Door Thickness:** 1 3/8 inches to 2 1/4 inches (35-55mm)

Check Compatibility Before Purchase



If our long handle lock overlaps with the deadbolt, move the deadbolt to the bottom hole and install our lock on top.



Image: Door compatibility diagram for Dermum S2 Model Smart Lock. This diagram illustrates the required bore hole diameter, backset, and door thickness for proper installation.

Important: If your existing deadbolt overlaps with the long handle of the new lock, you may need to move the deadbolt to the bottom hole and install the smart lock on top. Refer to the compatibility image for visual guidance.

5.2. Step-by-Step Installation

1. **Prepare the Door:** Remove your existing lock. Use the provided template to mark and drill any necessary holes if your door is not pre-drilled to standard specifications.
2. **Install the Latch:** Insert the latch into the door edge. Ensure the latch bolt faces the correct direction (beveled edge towards the door frame). Secure with screws.
3. **Install the Exterior Assembly:** Feed the cable and spindle through the bore hole. Align the exterior assembly with the latch and secure it to the door.
4. **Install the Interior Mounting Plate:** Attach the interior mounting plate to the exterior assembly using screws, ensuring the cable passes through the plate.
5. **Connect the Cable:** Connect the cable from the exterior assembly to the interior assembly.
6. **Install the Interior Assembly:** Mount the interior assembly onto the mounting plate, ensuring the spindle engages with the handle. Secure with screws.

7. **Install Batteries:** Open the battery cover on the interior assembly and insert 4 AA batteries (not included), observing polarity.
 8. **Test Operation:** Test the handle and latch mechanism manually to ensure smooth operation.
-

6. INITIAL SETUP AND APP PAIRING

To unlock the full potential of your Dermum Smart Lock, download the companion app and complete the initial setup.

1. **Download the App:** Search for "Dermum Smart" or "TTLock" in your smartphone's app store (iOS or Android).
2. **Create an Account:** Follow the in-app instructions to create a new user account.
3. **Add Your Lock:**
 - Enable Bluetooth on your smartphone.
 - In the app, tap "Add Lock" or the "+" icon.
 - Touch the keypad of your smart lock to wake it up.
 - Select your lock from the list of nearby devices in the app.
 - Follow the prompts to name your lock and complete the pairing process.
4. **Register Fingerprints:**
 - In the app, navigate to "Fingerprints" or "Users".
 - Tap "Add Fingerprint" and follow the on-screen instructions to register your fingerprint by placing your finger on the sensor multiple times.
5. **Set Up Passcodes:**
 - In the app, go to "Passcodes".
 - You can generate various types of passcodes: permanent, timed, one-time, or recurring.
 - Follow the prompts to create and manage your desired passcodes.
6. **Register Key Fobs:**
 - In the app, go to "Cards" or "Fobs".
 - Tap "Add Card" and then present the key fob to the keypad when prompted.

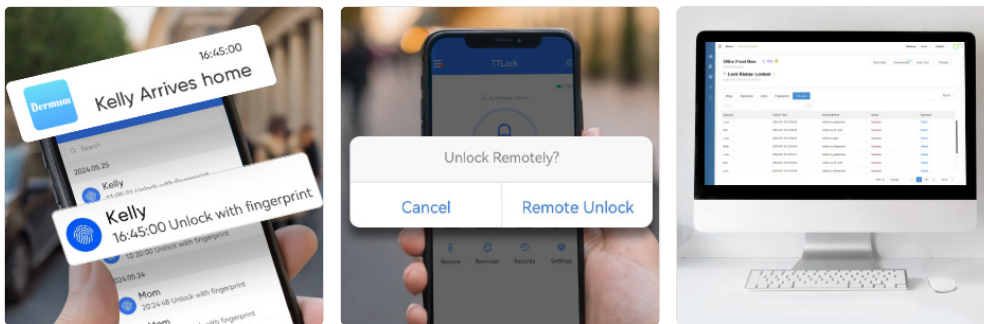


Image: The Dermum S2 Model Smart Lock shown alongside its companion smartphone application, illustrating the digital interface for managing lock functions.

7. OPERATING INSTRUCTIONS

7.1. Unlocking the Door

- **Fingerprint Unlock:** Place your registered finger on the fingerprint sensor. The lock will unlock if the fingerprint is recognized.
- **Passcode Unlock:** Touch the keypad to activate it. Enter your 6-8 digit passcode followed by the '#' key. The lock will unlock if the passcode is correct.
- **Key Fob Unlock:** Present a registered key fob to the keypad. The lock will unlock automatically.
- **App Unlock:** Open the app on your smartphone, ensure Bluetooth is enabled, and tap the unlock icon for your specific lock.
- **Physical Key Unlock:** Insert the physical key into the keyhole located at the bottom of the exterior handle and turn to unlock.



Images: Demonstrations of fingerprint, passcode, and key fob unlocking methods for the Dermum S2 Smart Lock.

7.2. Locking the Door

- **Auto-Lock:** The lock will automatically lock after a set period (configurable in the app) once the door is closed.
- **One-Touch Lock:** Press and hold the '#' key on the keypad for 2 seconds to manually lock the door.
- **App Lock:** Open the app on your smartphone and tap the lock icon.

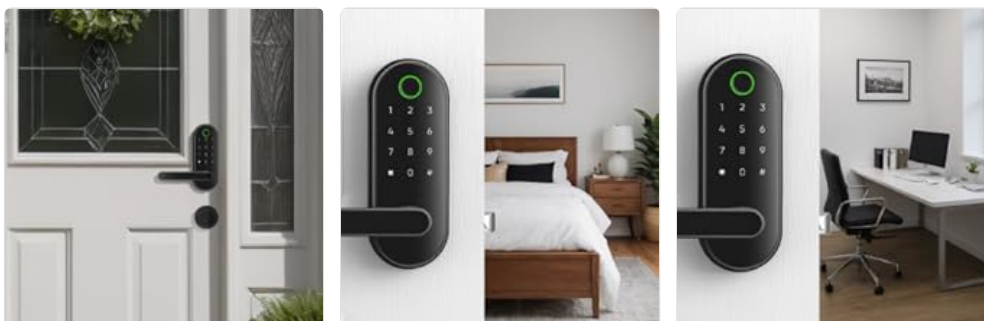


Image: Visual representation of the auto-lock mechanism engaging on the Dermum S2 Smart Lock.

8. ADVANCED FEATURES

8.1. Remote Access & Monitoring

With the smart app, you can receive real-time unlocking notifications, view access logs, and check the lock status from anywhere. A web portal is also available for desktop management.



Images: App notifications for unlocking, remote unlock feature, and desktop web portal for access log management.

8.2. Security and Anti-Theft Features

- **Privacy Mode:** Activate privacy mode from the interior assembly to prevent unlocking from the exterior keypad or app.
- **Anti-Peeping Password:** Enter random digits before or after your actual passcode to prevent others from guessing your code.

- **Anti-Theft Alarms:** The lock features alarms for forced entry attempts or multiple incorrect passcode entries. Alerts are sent to the smart app.



Images: Visuals demonstrating the privacy mode and anti-theft alarm features of the smart lock.

8.3. Voice Control (Gateway Required)

The Dermum S2 Model Smart Lock supports voice control with Amazon Alexa and Google Assistant. **A Dermum Gateway is required and sold separately for this functionality.**

- Once the gateway is set up and linked to your smart home assistant, you can use voice commands such as:
- "Alexa, lock the front door."
- "Hey Google, unlock the front door."
- "Alexa, check the status of the front door lock."

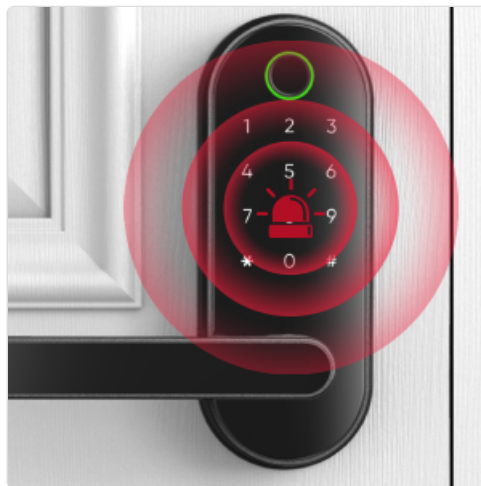


Image: A user interacting with a smart speaker to control the Dermum S2 Smart Lock via voice commands.

9. MAINTENANCE

- **Battery Replacement:** The lock will provide low battery warnings through the app and audible alerts. Replace all 4 AA batteries promptly. Use high-quality alkaline batteries for optimal performance.
 - **Cleaning:** Wipe the keypad and handle with a soft, damp cloth. Avoid abrasive cleaners or solvents that could damage the finish or electronic components.
 - **Lubrication:** Periodically check the latch mechanism for smooth operation. If needed, apply a small amount of graphite lubricant to the latch bolt.
-

10. TROUBLESHOOTING

Problem	Possible Cause	Solution
Lock does not respond.	Dead batteries.	Replace all 4 AA batteries.
Fingerprint not recognized.	Incorrect finger placement; dirty sensor; unregistered fingerprint.	Ensure proper finger placement; clean the sensor; re-register fingerprint if necessary.
Passcode not working.	Incorrect passcode; temporary passcode expired.	Verify passcode; check passcode validity in the app; try physical key.
App cannot connect to the lock.	Bluetooth off; lock out of range; app issue.	Ensure Bluetooth is on; move closer to the lock; restart the app or phone.
Lock is intermittently failing to lock/unlock.	Misalignment of door/latch; low battery; internal malfunction.	Check door alignment; replace batteries; contact customer support if issue persists.

11. WARRANTY AND CUSTOMER SUPPORT

Dermum products are designed for reliability and performance. For warranty information, technical assistance, or customer support, please refer to the contact information provided on the product packaging or the official Dermum website. Please retain your proof of purchase for warranty claims.

12. PRODUCT OVERVIEW VIDEOS

Your browser does not support the video tag.

Video: An overview of the Dermum S2 Smart Lock, highlighting its various features and benefits for home security and convenience.

Your browser does not support the video tag.

Video: A review showcasing the favorite features of the Dermum S2 Keyless Smart Lock, including its multiple unlocking options.

Your browser does not support the video tag.

Video: A pre-purchase guide for the Dermum S2 Keyless Entry Digital Smart Lock, detailing what to consider before buying.