

Manuals+

[Q & A](#) | [Deep Search](#) | [Upload](#)

manuals.plus /

> [TEEHO](#) /

> [TEEHO TE001 Keyless Entry Door Lock with Keypad - Smart Deadbolt Lock for Front Door with 2 Keys - Auto Lock - Easy Installation - Satin Nickel Traditional Satin Nickel](#)

TEEHO TE001

TEEHO TE001 Keyless Entry Door Lock User Manual

Model: TE001 | Brand: TEEHO

PRODUCT OVERVIEW

The TEEHO TE001 Keyless Entry Door Lock provides a secure and convenient solution for home access. This smart deadbolt features a keypad for passcode entry, automatic locking capabilities, and robust construction for enhanced security. It is designed for easy installation and offers multiple access options to suit various user needs.





Figure 1: Front view of the TEEHO TE001 Keyless Entry Door Lock in Satin Nickel finish.

SETUP AND INSTALLATION

The TEEHO TE001 is designed for straightforward installation, typically requiring only a screwdriver. Ensure your door meets the specified dimensions before beginning.

Pre-Installation Checks:

- Door Hole Diameter: Only suitable for 2-1/8" (54mm) door holes. Not compatible with 38mm door holes.
- Door Thickness: 1-3/8" to 2" (35mm to 50mm).
- Backset: Adjustable for 2-3/8" (60mm) or 2-3/4" (70mm).

One-Time PIN Code



The Entry Code is **'135192'**

Okay, I'm in.
Thanks



Figure 2: Diagram illustrating compatible door dimensions and lock types.

Installation Steps:

1. Remove existing deadbolt: Use a screwdriver to remove your current deadbolt.
2. Install the new deadbolt latch: Ensure the latch is oriented correctly for your door's swing.
3. Mount the exterior keypad assembly: Feed the power cable through the door hole and align the keypad.
4. Install the interior assembly: Connect the power cable and secure the interior unit to the mounting plate.
5. Insert batteries: The lock requires 4 AA batteries (not included).
6. Perform initial setup/reset: Follow the programming instructions to set your master code and calibrate the lock.

For detailed visual instructions, refer to the official [Installation Manual \(PDF\)](#).

OPERATING INSTRUCTIONS

Passcode Entry:

- The lock supports up to 20 access codes for family members.
- A temporary one-time PIN code can be set for single-use guest entry, which automatically deletes after use.
- Anti-peeping user code protection allows you to enter random digits before or after your actual code to prevent others from guessing it.

Up to 20 PIN Codes



Figure 3: Illustration of multiple PIN code support for various users.

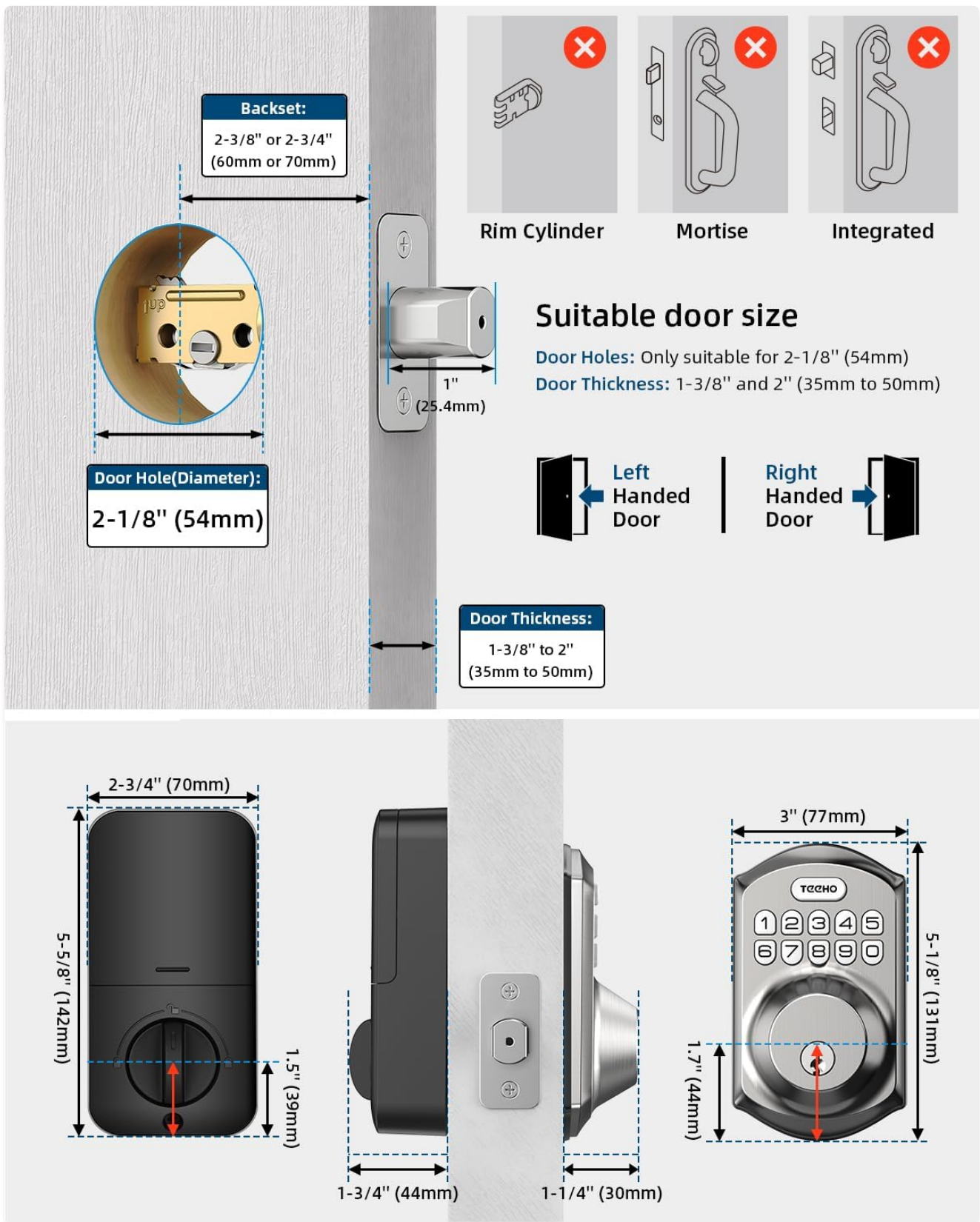


Figure 4: Example of generating and using a one-time PIN code for temporary access.

Smart Locking Features:

- **Automatic Door Lock:** Can be set to lock automatically within 10-99 seconds after closing.
- **One-Touch Auto-Lock:** Press and hold any key on the keypad for 2 seconds to instantly lock the door.
- **Silent Mode:** Option to mute keypad sounds for quiet operation.

Auto lock & one-touch locking



Auto

Press and hold any key for 2 seconds to lock. Automatically locked 10-99 seconds after closing the door.

Figure 5: Visual representation of the automatic and one-touch locking functions.

MAINTENANCE

- **Battery Replacement:** The lock features a low battery indicator. Replace all 4 AA alkaline batteries when the indicator appears to ensure optimal performance.
- **Cleaning:** Use a soft, dry cloth to clean the keypad and lock body. Avoid abrasive cleaners or solvents.

- **Weather Resistance:** The lock has an IP54 weather resistance rating, protecting it from dust and splashing water. However, avoid direct exposure to heavy rain or prolonged submersion.

Anti Peeping PIN Code

Enter Random Digits to Avoid Snooping



135 +
Random Digits

1259
PIN Code

+ 246
Random Digits

Figure 6: Information on battery life and low battery alerts.

Function & Security



20 User Codes



Auto-Lock



IP54 Waterproof



One-Time PIN Code



One Touch Locking



Figure 7: Visual representation of the lock's weather resistance capabilities.

TROUBLESHOOTING

- **Keypad not responding:** Check battery levels. Replace batteries if low.
- **Code not working:** Ensure the correct master code or user code is entered. Verify the lock is not in vacation mode.

- **Deadbolt not extending/retracting:** Check for obstructions in the door frame or latch mechanism. Ensure the lock is properly aligned.
- **Lock beeping continuously:** This may indicate low battery. Replace batteries.

For further assistance, refer to the [User Guide \(PDF\)](#) available on the product page or contact TEEHO customer service.

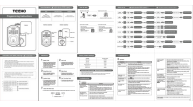
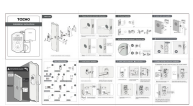

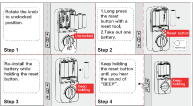


SPECIFICATIONS

Feature	Detail
Brand	TEEHO
Model Name	TEEHO TE001 Keypad Deadbolt
Lock Type	Keypad Deadbolt Door Lock
Material	Stainless Steel, Nickel, Zinc
Color	Satin Nickel
Item Weight	1.76 Pounds
Product Dimensions	5.12 x 2.95 x 1.3 inches
Special Features	Battery Indicator, Back-Lit Keypad, 20 Individual User Codes, One-time Access, Auto Lock, One-touch Lock, Anti-peeping Password, Vacation Mode, Mute Mode, Wrong Entry Limit, IP54 Waterproof
Included Components	TE001 deadbolt door lock, 2 Standard Key, Latch, Strike Plate, Installation Instructions, Programming Instructions

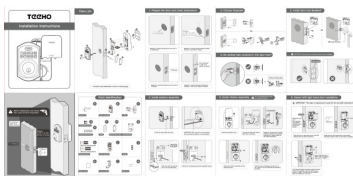
WARRANTY AND SUPPORT

TEEHO offers a 1-year warranty on all parts and lifetime customer service. This includes online phone support from Monday to Friday, 9 AM to 5 PM PST, and 24/7 online email service.

For support, please visit the [TEEHO Store](#) or refer to the official [User Guide \(PDF\)](#) for comprehensive details.

	<p>TEEHO TE001/TE001K Keyless Entry Door Lock Programming Instructions</p> <p>Comprehensive programming instructions for the TEEHO TE001 and TE001K keyless entry door locks, covering installation, usage, feature settings, and troubleshooting.</p>
	<p>TEEHO TE002K Fingerprint Door Lock Installation Guide</p> <p>Comprehensive installation instructions for the TEEHO TE002K Fingerprint Door Lock, detailing door preparation, parts identification, and step-by-step assembly for a secure and easy setup.</p>
	<p>TEEHO TE001K Keyless Entry Door Lock and Door Knob Installation Guide</p> <p>Comprehensive installation instructions for TEEHO TE001K keyless entry door locks and door knobs, covering door preparation, parts identification, and step-by-step assembly for secure and easy installation.</p>
	<p>TEEHO Smart Lock Reset Guide: Step-by-Step Instructions</p> <p>This guide provides clear, step-by-step instructions for resetting TEEHO keyless entry door locks, including models like TE001 and TE002K. Essential for maintaining your smart lock.</p>
	<p>TEEHO TE001 Keyless Entry Door Lock Installation Guide</p> <p>Step-by-step instructions for installing the TEEHO TE001 keyless entry door lock, including door preparation, parts identification, and assembly.</p>
	<p>TEEHO TE001 Smart Lock Installation Manual</p> <p>Comprehensive installation guide for the TEEHO TE001 smart door lock, covering parts list, step-by-step installation, troubleshooting, and safety information.</p>

Documents - TEEHO – TE001



[TEEHO TE001 Keyless Entry Door Lock Installation Guide](#)

Step-by-step instructions for installing the TEEHO TE001 keyless entry door lock, including door preparation, parts identification, and assembly.

lang: score:32 filesize: 3.25 M page_count: 1 document date: 2022-04-18



[TEEHO TE001 Smart Lock Installation Manual](#)

Comprehensive installation guide for the TEEHO TE001 smart door lock, covering parts list, step-by-step installation, troubleshooting, and safety information.

lang:en score:30 filesize: 9.64 M page_count: 19 document date: 2025-09-04

TECHO

Installation Manual

Model No. TE001

Need Help? Contact Us!

If you have any questions, please contact us at

+1 (833) 878-3346
(Monday-Friday 9:00 am-5:00 pm PST)

support@teeho.com

teeho.com

Tutorial Video



Scan the QR code and search **TE001**

Please watch these videos first and use this manual as a guide.

[Teeho TE001 Smart Lock Installation Manual and Guide](#)

Comprehensive installation guide for the Teeho TE001 smart lock, covering parts list, door preparation, latch installation, assembly, troubleshooting, and safety information. lang:en score:20 filesize: 3.19 M page_count: 29 document date: 2025-09-12