

Everdure FUSION

Everdure by Heston Blumenthal Fusion 29-Inch Charcoal Grill User Manual

Model: FUSION

INTRODUCTION

This manual provides essential instructions for the safe and efficient operation, assembly, and maintenance of your Everdure by Heston Blumenthal Fusion 29-Inch Charcoal Grill. Please read all instructions carefully before using the grill to ensure proper function and safety.



Image: The Everdure Fusion 29-Inch Charcoal Grill, showcasing its sleek design and pedestal stand.

SAFETY INFORMATION

Always prioritize safety when operating any charcoal grill. Failure to follow these safety guidelines may result in property damage, injury, or death.

- **Outdoor Use Only:** This grill is designed for outdoor use in a well-ventilated area. Do not use indoors or in enclosed spaces.

- **Clearance:** Maintain a minimum distance of 3 feet (1 meter) from combustible materials (e.g., walls, fences, trees).
- **Stable Surface:** Always place the grill on a stable, level, non-combustible surface.
- **Children and Pets:** Keep children and pets away from the grill at all times, especially during operation.
- **Hot Surfaces:** Grill surfaces become extremely hot during use. Use heat-resistant gloves and appropriate tools.
- **Charcoal Handling:** Use only lump charcoal or briquettes. Never use gasoline, kerosene, or alcohol to ignite charcoal.
- **Electrical Safety:** Ensure the power cord is in good condition and connected to a grounded outlet. Keep the cord away from hot surfaces and water.
- **Fire Extinguisher:** Have a fire extinguisher or a bucket of sand readily available in case of a grease fire.
- **Proposition 65 Warning:** This product can expose you to chemicals including carbon monoxide, which is known to the State of California to cause birth defects or other reproductive harm. For more information go to www.P65Warnings.ca.gov.

PACKAGE CONTENTS

Verify that all components are present before beginning assembly:

- Everdure Fusion Grill Unit
- Detachable Pedestal (if applicable)
- Hinged Chrome Grill Grate
- Weather Windshield
- Rotisserie Kit (Rotisserie Rod, 2 Cliplock Forks)
- Porcelain Enamel Charcoal Tray
- User Manual

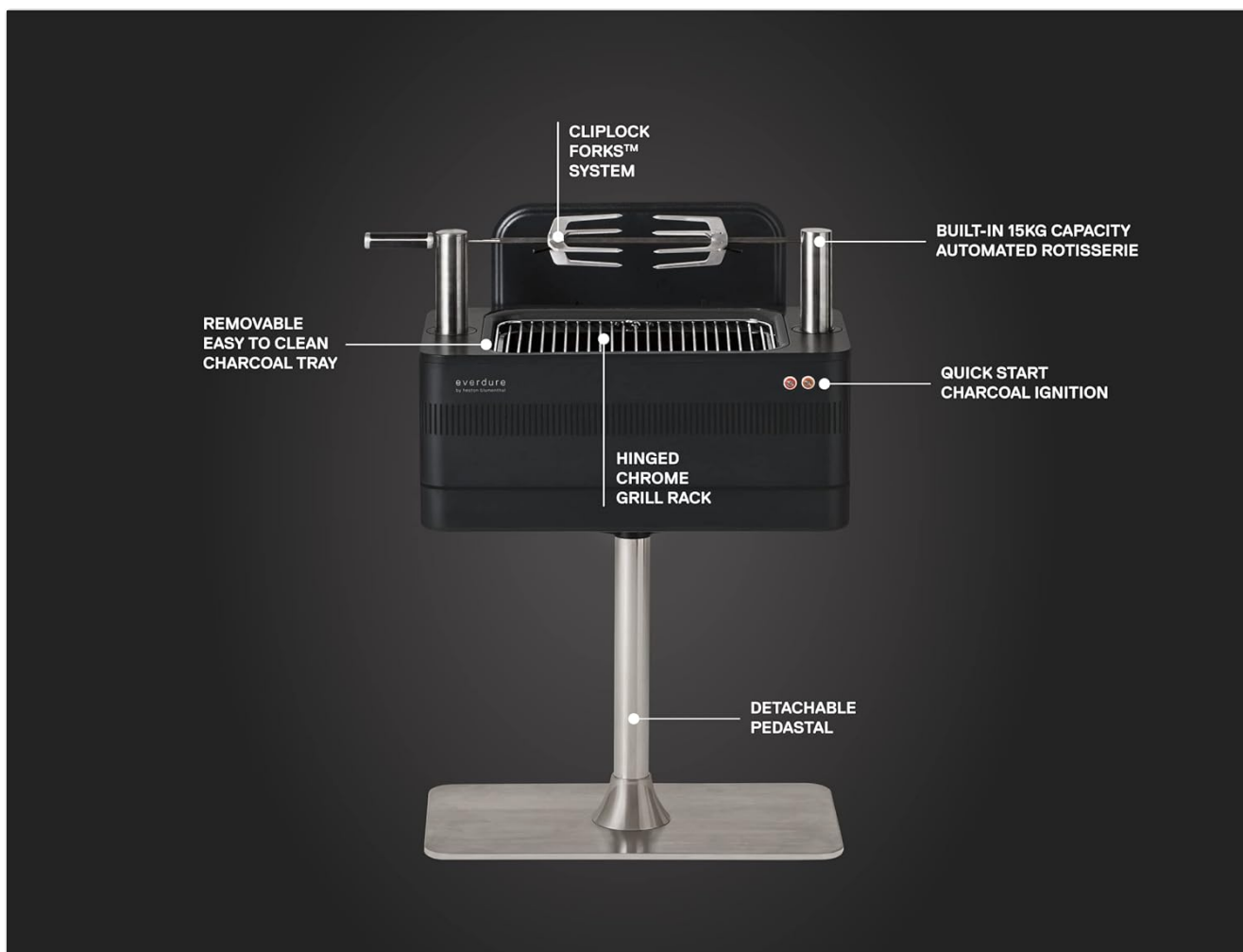


Image: An exploded diagram illustrating the main components of the Everdure Fusion grill, including the Cliplock Forks, hinged grill rack, quick start ignition, removable charcoal tray, and detachable pedestal.

SETUP AND ASSEMBLY

Assembly is required for the Everdure Fusion Grill. Follow these steps carefully:

1. **Unpacking:** Carefully remove all components from the packaging. Inspect for any damage.
2. **Pedestal Assembly (Optional):** If using the pedestal, attach it securely to the main grill unit according to the included hardware instructions. Ensure all connections are tight and stable. The pedestal is designed for easy attachment and detachment, offering versatility for various grilling environments.
3. **Charcoal Tray:** Place the porcelain enamel charcoal tray into the firebox.
4. **Grill Grate:** Position the hinged chrome grill grate over the charcoal tray.
5. **Weather Windshield:** Install the weather windshield as directed to protect your cooking area.
6. **Power Connection:** Extend the 59-inch retractable power cord and plug it into a grounded electrical outlet. Ensure the cord is not a tripping hazard and is away from heat sources.

REMOVABLE PEDESTAL

Easily attachable pedestal for increased versatility in any environment



Image: The Everdure Fusion grill shown with its removable pedestal, highlighting its adaptability for different setups.

OPERATING INSTRUCTIONS

1. Fast Flame Ignition System

The Fast Flame Ignition System allows for quick charcoal ignition:

1. Place your desired amount of lump charcoal or briquettes onto the charcoal tray.
2. Ensure the grill grate is in place.
3. Press the "Fast Flame Ignition" button (refer to image below for location). A heating element will activate, igniting the charcoal.
4. The charcoal should be ready for grilling in approximately 10 minutes. The system will automatically turn off once the charcoal is ignited.

CHARCOAL IGNITION AT THE PRESS OF A BUTTON

With the press of a button you can get your charcoal burning at the right temperature in just 10 minutes with the Fast Flame Ignition System.



Image: A close-up view of the control panel, showing the Fast Flame Ignition and Automated Rotisserie System buttons.

2. Built-in Rotisserie System (Rotiscope Technology)

The patented Rotiscope Technology provides a convenient rotisserie function:

1. **Deploying Rotisserie Poles:** Press and pop out the rotisserie support poles located on the top of the grill unit.
2. **Attaching Food:** Secure your food (up to 30 lbs) onto the rotisserie rod using the Cliplock Forks. The jaw-like design ensures food remains firmly in place.
3. **Inserting Rod:** Insert the rotisserie rod into the deployed support poles.
4. **Adjusting Height:** The rotisserie offers 3 height settings. Adjust the rod to the desired height for optimal cooking.
5. **Activating Rotisserie:** Press the "Automated Rotisserie System" button to begin rotation.

BUILT-IN AUTOMATED ROTISSERIE SYSTEM

Powered by the click of a button you can grill an authentic meal with 3 height settings and a 30 lbs max



Image: A rotisserie support pole extended from the grill, ready to hold the rotisserie rod.



Image: A whole chicken rotating on the rotisserie system over hot charcoal, demonstrating the grill's rotisserie capability.

3. General Grilling

For direct grilling of items like burgers, steaks, and vegetables:

- After charcoal ignition, spread the hot charcoal evenly across the tray.
- Place food directly on the hinged chrome grill grate.
- The hinged design allows for easy access to add or redistribute charcoal during cooking.



Image: Fish fillets and asparagus cooking on the grill grate, illustrating standard grilling use.

MAINTENANCE AND CLEANING

Regular cleaning and maintenance will extend the life of your grill.

- **Cool Down:** Always allow the grill to cool completely before cleaning.
- **Charcoal Tray:** The porcelain enamel charcoal tray is designed for easy removal and cleaning. Dispose of cooled ash properly.
- **Grill Grate:** Clean the chrome grill grate with a grill brush after each use. For stubborn residue, soak in warm, soapy water.
- **Exterior:** Wipe down exterior surfaces with a damp cloth and mild detergent. Avoid abrasive cleaners.
- **Rotisserie Components:** Clean the rotisserie rod and Cliplock Forks with warm, soapy water.
- **Storage:** The 59-inch retractable power cord allows for neat storage. If using the detachable pedestal, the grill can be stored separately for increased versatility. Store the grill in a dry, protected area when not in use.

CLEVER STORAGE SOLUTIONS

59-inch retractable power cord for long reach powering options and no clutter storing

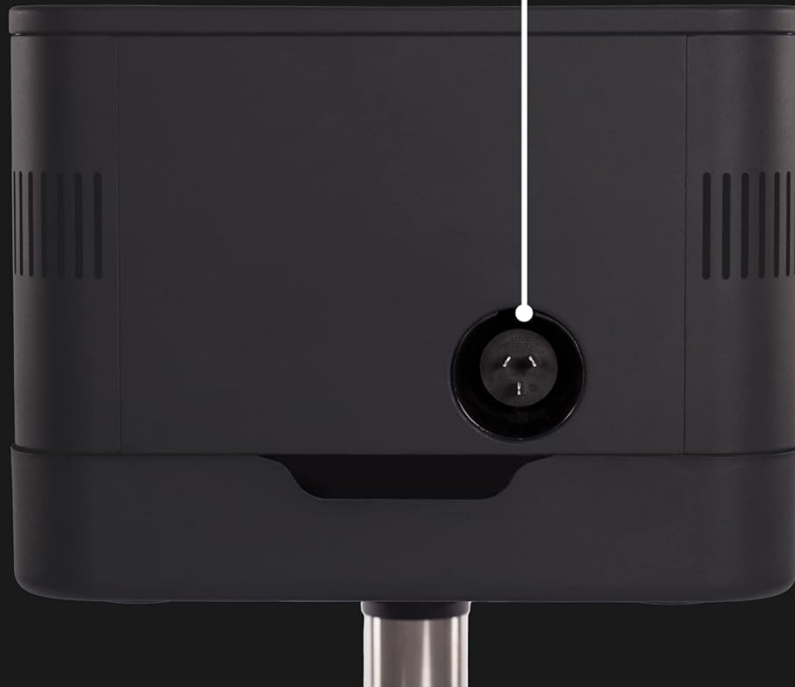


Image: A close-up of the grill's side, showing the retractable power cord for convenient storage and use.

TROUBLESHOOTING

If you encounter issues with your Everdure Fusion Grill, refer to the following common problems and solutions:

Problem	Possible Cause	Solution
Charcoal not igniting with Fast Flame System.	No power, faulty heating element, insufficient charcoal contact.	Check power connection. Ensure charcoal is in contact with the heating element. If problem persists, contact support.
Rotisserie not rotating.	No power, rotisserie rod not properly seated, motor malfunction.	Verify power connection. Ensure rotisserie rod is correctly inserted into support poles. Check for obstructions.
Uneven charcoal burning.	Improper charcoal distribution, insufficient airflow.	Distribute charcoal evenly. Ensure vents are clear. Avoid overfilling the charcoal tray.
Difficulty cleaning charcoal tray.	Ash buildup, cooled residue.	Ensure grill is completely cool. Remove charcoal tray and dispose of ash. Soak tray in warm, soapy water if needed.

SPECIFICATIONS

Detailed specifications for the Everdure Fusion 29-Inch Charcoal Grill:

- **Model Name:** FUSION
- **Product Dimensions:** 29"D x 16"W x 35"H
- **Item Weight:** 79.2 Pounds
- **Material:** Alloy Steel
- **Finish Type:** Matte Black
- **Fuel Type:** Charcoal
- **Special Features:** Adjustable height (rotisserie), Heat-Resistant Handle, Portable (with detachable pedestal)
- **Rotisserie Capacity:** Up to 30 lbs, 3 height settings
- **Power Cord:** 59-inch retractable
- **Voltage:** 120 Volts (AC)
- **Included Components:** Hinged Chrome Grill, Weather Windshield, 2 Cliplock Forks, FUSION Grill, Rotisserie Kit
- **Assembly Required:** Yes

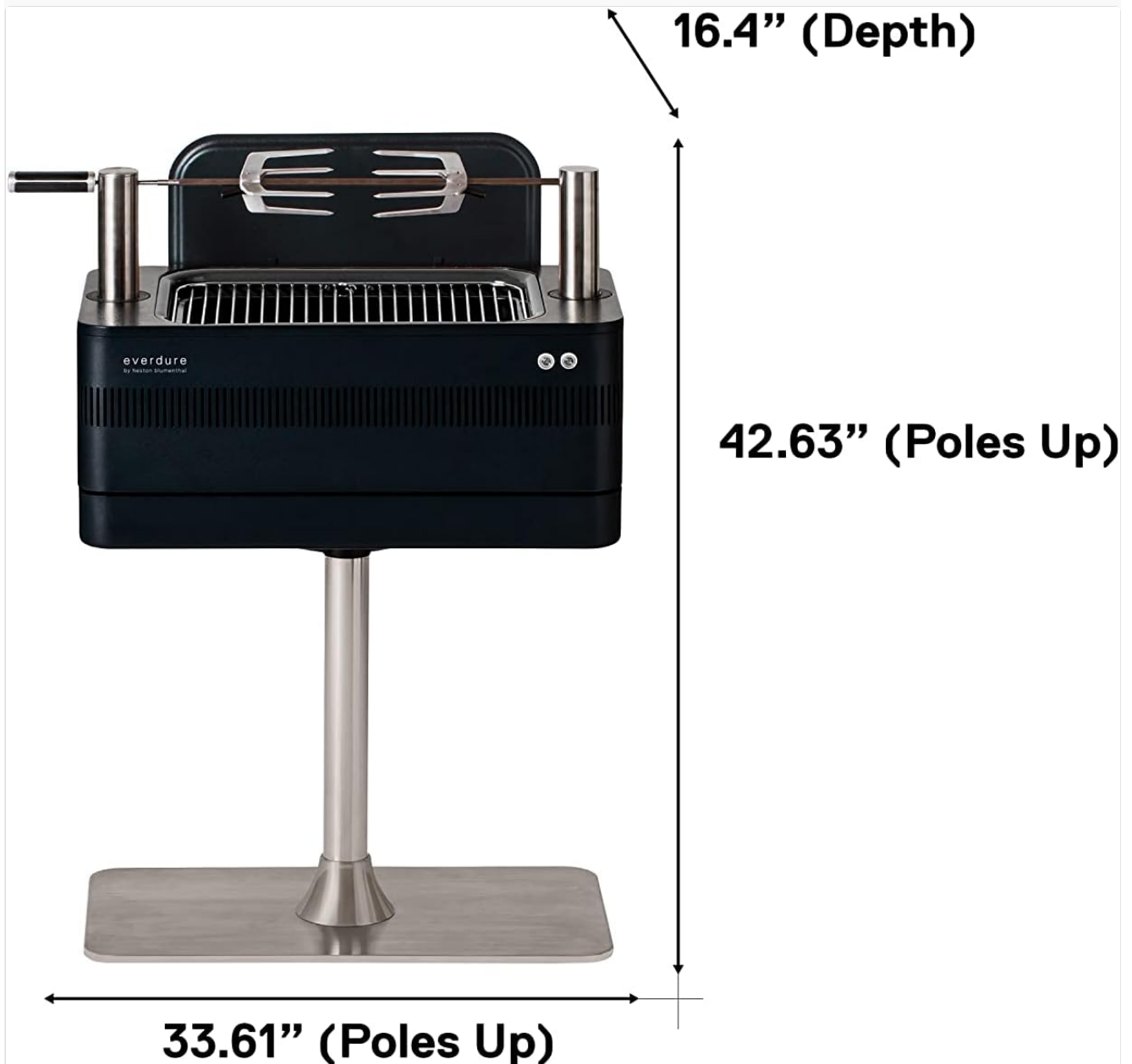


Image: A diagram illustrating the key dimensions of the Everdure Fusion grill, including depth, width, and height with rotisserie poles extended.

WARRANTY INFORMATION




The Everdure Fusion Charcoal Grill is backed by a robust 10-year warranty. For specific terms and conditions, please refer to the warranty card included with your product or visit the official Everdure website.


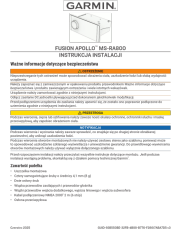

CUSTOMER SUPPORT

For further assistance, technical support, or warranty claims, please contact Everdure customer service through their official website or the contact information provided in your product packaging.

© 2025 Everdure. All rights reserved.

Related Documents - FUSION

	<p>Everdure HUB™ Electric Ignition Charcoal Grill Quick User Guide</p> <p>A concise guide to using the Everdure HUB™ electric ignition charcoal grill, featuring setup, cooking methods (direct, indirect, rotisserie), and heat guidance.</p>
	<p>Everdure HUB II Electric Ignition Charcoal Grill Quick User Guide</p> <p>A concise guide to using the Everdure HUB II electric ignition charcoal grill, covering setup, heat guidance, direct and indirect cooking methods, and rotisserie use.</p>
	<p>Everdure EKM3BBQ / EKM3BBQBP BBQ Module: Operation, Maintenance & Safety Instructions</p> <p>Comprehensive guide for the Everdure EKM3BBQ and EKM3BBQBP outdoor BBQ module, covering operation, maintenance, safety, assembly, and warranty information.</p>

 <p>FUSION APOLLO™ MS-RA800 ISTRUZIONI DI INSTALLAZIONE</p>	<p>Fusion Apollo MS-RA800 Installation Instructions</p> <p>This document provides installation instructions for the Fusion Apollo MS-RA800 marine stereo, covering safety information, required tools, installation steps, connection details, and network setup.</p>
 <p>FUSION APOLLO™ MS-RA800 ISTRUZIONI DI INSTALLAZIONE</p>	<p>Fusion Apollo MS-RA800 Installation Manual</p> <p>This document provides installation instructions for the Fusion Apollo MS-RA800 marine stereo system, covering safety precautions, required tools, mounting guidelines, wiring, and network setup.</p>
 <p>FUSION APOLLO™ MS-RA800 Käyttöopas</p>	<p>Fusion Apollo MS-RA800 Käyttöopas: Käyttöohjeet ja ominaisuudet</p> <p>Tämä käyttöopas tarjoaa kattavat ohjeet Fusion Apollo MS-RA800 -äänijärjestelmän käyttöön ja ominaisuuksiin. Opi asentamaan, käyttämään ja optimoimaan laitteen suorituskykyä.</p>