

## Fenix HP30RV2

# Fenix HP30R v2.0 Headlamp User Manual

Model: HP30RV2

## 1. INTRODUCTION

The Fenix HP30R v2.0 is a high-performance, rechargeable headlamp designed for demanding outdoor activities and professional use. It features a powerful spotlight, a wide-angle floodlight, and a detachable power pack that also functions as a portable power bank. This manual provides essential information for the proper setup, operation, and maintenance of your headlamp.



Image 1.1: The Fenix HP30R v2.0 Headlamp, showcasing its main components including the lamp unit, adjustable headband, and the separate battery pack.

## 2. PACKAGE CONTENTS

Verify that all items are present in your package:

- Fenix HP30R v2.0 Headlamp (with split Power pack)
- Headband
- USB-C Charging Cable
- Helmet Attachment Hooks (4 pieces)
- Cable Clips (3 pieces)
- Stainless Belt Clip
- Extension Cable
- LumenTac Organizer

## 3. PRODUCT FEATURES

### 3.1. Lighting Performance

- **Maximum Output:** Up to 3000 lumens combined output.

- **Dual Light Sources:** Primary spotlight LED and two high CRI wide-angle floodlights.
- **Beam Distance:** Up to 270 meters (spotlight).
- **Multiple Modes:** Independent control for spotlight, floodlight, and combined modes with various brightness levels.

**FENIX**  
LIGHTING FOR EXTREMES

# 3000 LUMENS SEARCHING LIGHT

The HP30R V2.0 delivers a remarkable combined output of 3000 lumens, making it the perfect tool for users in harsh conditions, like search and rescue, or other extreme outdoor endeavors.

3000 lumens output    270 meters beam    100° floodlight

2000 lumens of spotlight mode    1000 lumens of floodlight mode

Image 3.1: The headlamp's powerful 3000-lumen output, demonstrating its capability to illuminate vast areas for searching and outdoor activities.



## SPOTLIGHT AND FLOODLIGHT COMBINED FOR A VARIETY OF LIGHTING DEMANDS

**Main spotlight (50 - 2000 lumens)**  
Large-area searching and outdoor work

**Auxiliary floodlight (50 - 1000 lumens)**  
Up-close cave exploration, equipment maintenance

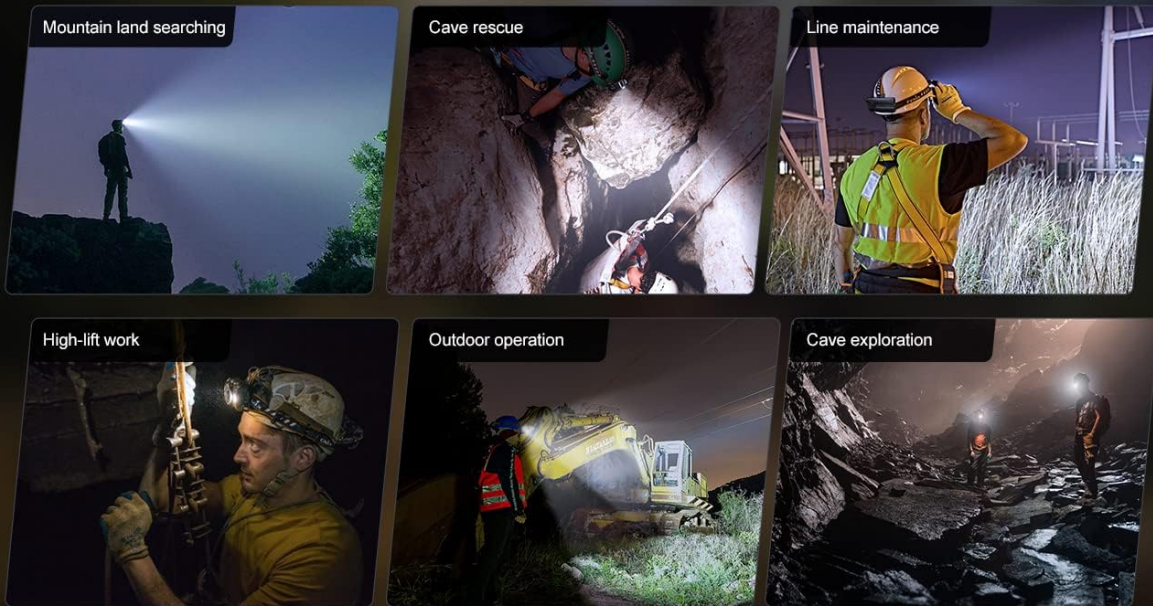


Image 3.2: Examples of how the combined spotlight and floodlight functions can be utilized for diverse tasks such as mountain searching, cave rescue, and maintenance work.

### 3.2. Power System

- **Detachable Power Pack:** The rear power pack can be detached and worn on a belt or placed in a pocket for improved weight distribution and cold weather performance.
- **USB-C Rechargeable:** The power pack is easily rechargeable via a USB-C port.
- **Portable Power Bank:** Features a USB output port to charge other electronic devices.
- **Long Runtime:** Provides over 15 days of continuous use (based on 8 hours per day).



Image 3.3: The detachable power pack acting as a portable power source, charging a smartphone via its USB output port.



Image 3.4: Visual representation of the headlamp's extended runtime, highlighting its suitability for prolonged use.

### 3.3. Durability and Design

- **Robust Construction:** All-metal unibody LED housing.
- **Impact Resistance:** Withstands impacts up to 2 meters.
- **Water Resistance:** IP66 rated, fully protected against dust and heavy rain/splashes.
- **Temperature Tolerance:** Operates in temperatures from -31°F to 113°F (-35°C to 45°C).
- **User-Friendly Interface:** Instant-on rotating switch for easy mode selection.

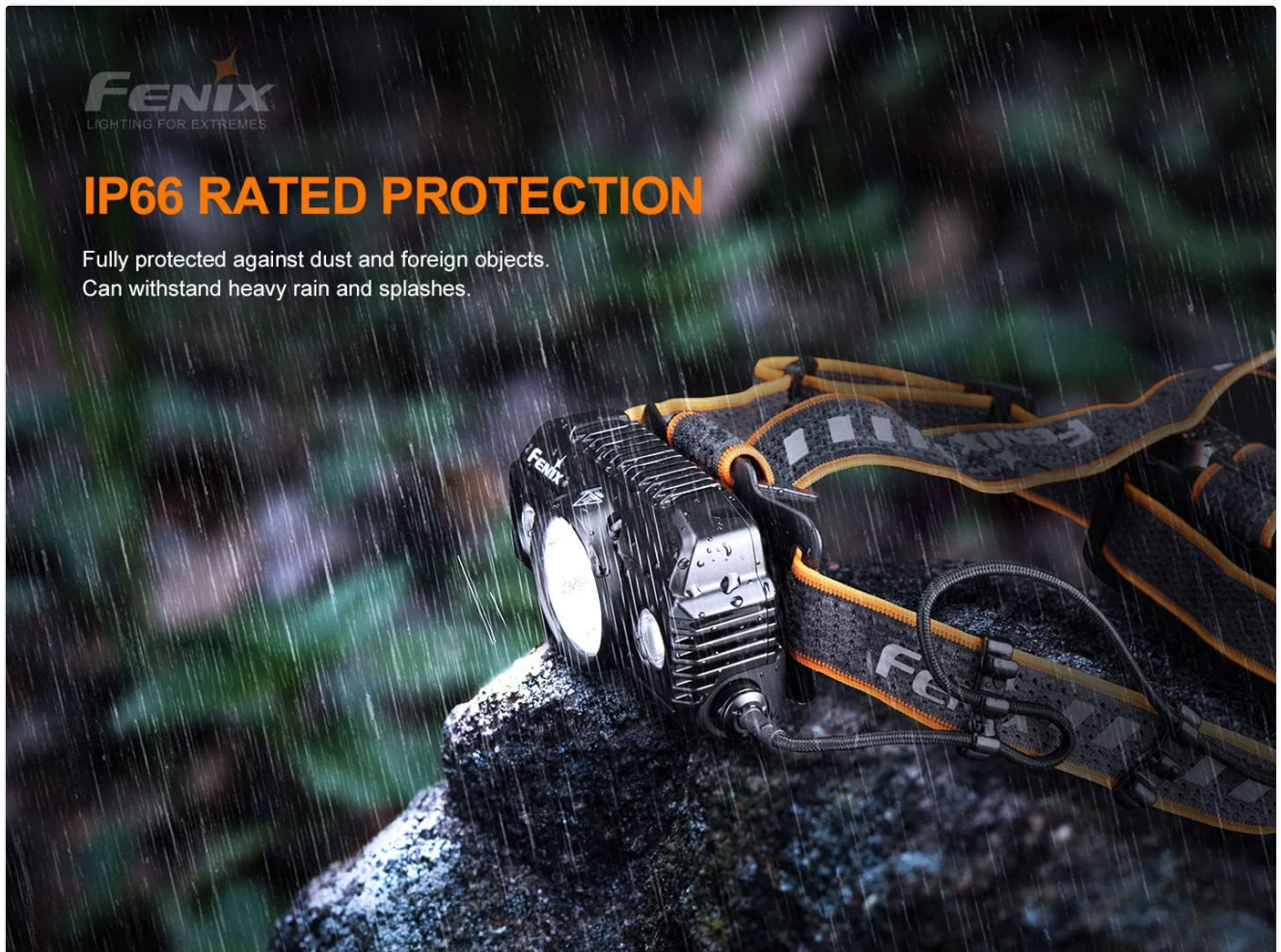


Image 3.5: The headlamp operating in rainy conditions, illustrating its IP66 water-resistant design.

## 4. SETUP

### 4.1. Attaching the Headband and Power Pack

1. Unpack the headlamp unit, headband, and power pack.

2. Thread the adjustable headband through the designated slots on the headlamp unit and the rear power pack holder. Ensure the Fenix logo on the headband faces forward.
3. Connect the cable from the headlamp unit to the power pack. Ensure a secure connection.
4. Adjust the headband for a comfortable and secure fit on your head.

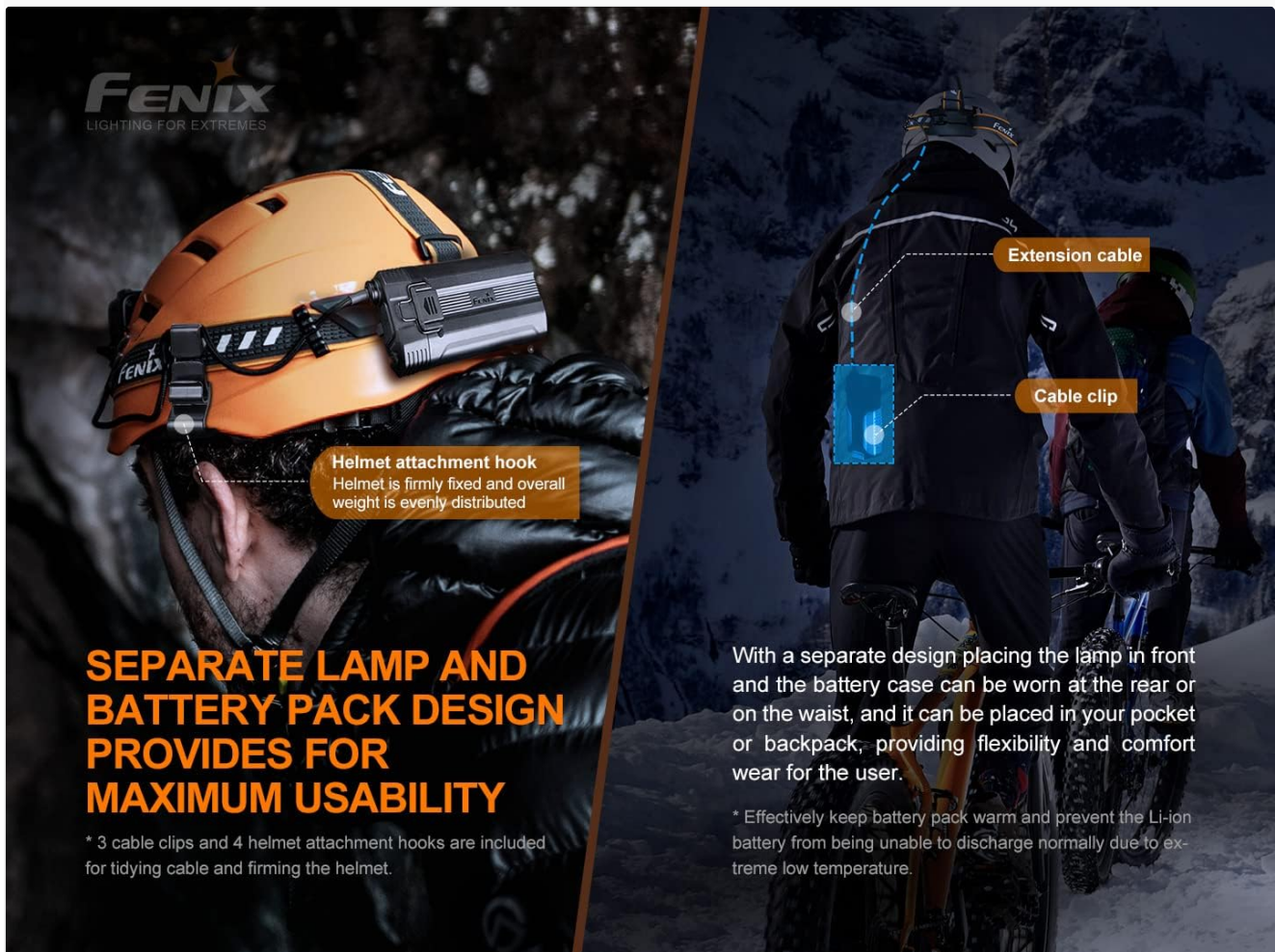


Image 4.1: The separate lamp and battery pack design, illustrating how the battery pack can be worn on the rear of the head or body using an extension cable for optimal weight distribution.

## 4.2. Charging the Power Pack

1. Locate the USB-C charging port on the power pack.
2. Connect the provided USB-C charging cable to the power pack and plug the other end into a USB power adapter (not included) or a computer USB port.
3. The charging indicator lights on the power pack will illuminate to show charging status. Charging typically takes approximately 4.5 hours for a full charge.
4. Once fully charged, disconnect the charging cable.

## 5. OPERATING INSTRUCTIONS

### 5.1. Power On/Off and Mode Selection

The Fenix HP30R v2.0 features an intuitive rotating switch for control.

1. **To Turn On/Off:** Rotate the switch clockwise or counter-clockwise from the 'Off' position to activate a lighting mode. Rotate back to 'Off' to power down.
2. **Mode Switching:** The rotating switch allows for quick selection between Spotlight Mode, Floodlight Mode, and

Spot & Flood Mode.

3. **Brightness Adjustment:** Within each mode (Spotlight, Floodlight, or Spot & Flood), continue rotating the switch to cycle through brightness levels (Low → Med → High → Turbo).



Image 5.1: The rotating switch mechanism, providing instant access to power and various lighting modes and brightness levels.

## 5.2. Battery Level Indication

The power pack includes indicator lights to display the remaining battery charge:

- **Four constant lights:** 100% - 80%
- **Three constant lights:** 80% - 60%
- **Two constant lights:** 60% - 40%
- **One constant light:** 40% - 20%
- **One flashing light:** Critical 20% - 1%



Image 5.2: The battery level indicator on the power pack, showing charge status via a series of LED lights.

## 6. MAINTENANCE

### 6.1. Cleaning

- Clean the headlamp and power pack with a soft, damp cloth.
- Do not use abrasive cleaners or solvents.
- Keep the charging port free from dust and debris.

### 6.2. Battery Care and Storage

- Charge the power pack fully before long-term storage.
- Recharge every four months to maintain optimal battery health.
- Store the headlamp in a cool, dry place away from direct sunlight and extreme temperatures.

## 7. TROUBLESHOOTING

If you encounter issues with your Fenix HP30R v2.0 Headlamp, refer to the following common problems and solutions:

- **Headlamp does not turn on:** Ensure the power pack is charged and properly connected to the headlamp unit. Check for any visible damage to the cable or connectors.
- **Light output is dim or flickers:** The battery may be low. Recharge the power pack. If the issue persists, ensure the connections are clean and secure.
- **Power pack not charging:** Verify the USB-C cable is correctly inserted into both the power pack and the power source. Try a different USB-C cable or power adapter.
- **Headlamp gets hot:** High brightness levels, especially 'Turbo' mode, generate heat. This is normal. If the heat becomes excessive or the headlamp shuts off unexpectedly, reduce the brightness level. The headlamp has built-in thermal protection.

For issues not covered here, please contact Fenix customer support.

## 8. SPECIFICATIONS



## TECHNICAL PARAMETERS

**Headlamp:** 3.62" x 2.20" x 1.73" / 92 x 56 x 44 mm

**Battery case:** 4.21" x 1.97" x 1.61" / 107 x 50 x 41 mm

**Weight:** 15.41 oz / 437 g

ANSI/ PLATO FL1	Spotlight Mode				Floodlight Mode			Spot & Flood Mode			
	Turbo	High	Med	Low	High	Med	Low	Turbo	High	Med	Low
Output	2000 lumens	800 lumens	200 lumens	50 lumens	1000 lumens	200 lumens	50 lumens	3000 lumens	1800 lumens	400 lumens	100 lumens
Runtime	6 hours*	12 hours	34 hours	120 hours	10 hours	34 hours	120 hours	5 hours	6 hours	17 hours	60 hours
Distance	251 meters	156 meters	78 meters	42 meters	78 meters	34 meters	17 meters	270 meters	177 meters	85 meters	45 meters
Intensity	15733 candela	6104 candela	1515 candela	450 candela	1513 candela	291 candela	76 candela	17933 candela	7881 candela	1812 candela	512 candela
Impact Resistance	2 meters										
Water Resistant	IP66										

Image 8.1: Detailed technical parameters of the Fenix HP30R v2.0 Headlamp.

### Fenix HP30R v2.0 Technical Specifications

Feature	Detail
Headlamp Dimensions	3.62 x 2.2 x 1.73 inches (92 x 56 x 44 mm)
Battery Case Dimensions	4.21 x 1.97 x 1.61 inches (107 x 50 x 41 mm)
Weight	15.41 ounces (437 g)
Max Output	3000 Lumens
Max Beam Distance	270 meters
Impact Resistance	2 meters
Water Resistance	IP66 (Dustproof, heavy splash resistant)
Power Source	2 x Lithium Ion batteries (included)
Voltage	3.7 Volts (DC)
Charging Time	Approx. 4.5 hours via USB-C
Material	Aluminum

Feature	Detail
Operating Temperature	-31°F to 113°F (-35°C to 45°C)

### 8.1. Runtime and Output Table (ANSI/PLATO FL1 Standard)

Mode	Output	Runtime	Distance	Intensity
<b>Spotlight Mode</b>				
Turbo	2000 lumens	6 hours	251 meters	15733 candela
High	800 lumens	12 hours	156 meters	6104 candela
Med	200 lumens	34 hours	78 meters	1515 candela
Low	50 lumens	120 hours	42 meters	450 candela
<b>Floodlight Mode</b>				
High	1000 lumens	10 hours	78 meters	1513 candela
Med	200 lumens	34 hours	34 meters	291 candela
Low	50 lumens	120 hours	17 meters	76 candela
<b>Spot &amp; Flood Mode</b>				
Turbo	3000 lumens	5 hours	270 meters	17933 candela
High	1800 lumens	6 hours	177 meters	7881 candela
Med	400 lumens	17 hours	85 meters	1812 candela
Low	100 lumens	60 hours	45 meters	512 candela

## 9. WARRANTY INFORMATION

The Fenix HP30R v2.0 Headlamp comes with a manufacturer's warranty. For specific details regarding warranty coverage, duration, and terms, please refer to the official Fenix website or the warranty card included with your product. Keep your proof of purchase for warranty claims.

## 10. CUSTOMER SUPPORT

For further assistance, technical support, or service inquiries, please visit the official Fenix website at [www.fenixlight.com](http://www.fenixlight.com) or contact their authorized distributors. You can also visit the Fenix store on Amazon: [Fenix Amazon Store](#).

---

© 2025 Fenix. All rights reserved.

*Note: Video embedding was not possible as relevant video data (URLs with creator\_type) was not provided in the input.*