

Nilight 91068A

Nilight Hitch Mount Flagpole Holder (Model 91068A) Instruction Manual

Model: 91068A

1. INTRODUCTION

This manual provides comprehensive instructions for the safe and effective installation, operation, and maintenance of your Nilight Hitch Mount Flagpole Holder. Please read these instructions carefully before use and retain this manual for future reference.

The Nilight Hitch Mount Flagpole Holder is designed to securely hold flagpoles, antennas, or similar items with a diameter between 1 inch and 2.3 inches. It is compatible with standard 2-inch hitch receivers found on various vehicles including RVs, SUVs, pickup trucks, campers, trailers, and Jeeps.



Image 1.1: Overview of the Nilight Hitch Mount Flagpole Holder and its application on a vehicle.

2. PACKAGE CONTENTS

Verify that all components listed below are present in your package:

- 1x Flagpole Holder
- 2x Mounting Screws (knob type)
- 1x Hitch Pin & Hitch Pin Clip
- 1x Square Wire Lock Pin
- 2x 2-inch Flange Pipe Sockets (optional use)
- 1x User Manual



Image 2.1: All components included in the package for the flagpole holder.

3. SPECIFICATIONS

Feature	Specification
Model Number	91068A
Material	Alloy Steel
Finish Type	Coated (Powder Coating)
Compatible Hitch Receiver Size	2 inches
Compatible Flagpole Diameter	1 inch to 2.3 inches
Product Dimensions (L x W x H)	18 x 3 x 19 inches
Item Weight	8.48 pounds (3.86 kg)
Maximum Spare Tire/Tailgate Clearance	13 inches

PRODUCT DIMENSION

2.3inch

19.4inch

4.1inch

4.1inch

17.3inch

10.6inch

13inch

15.2inch

0.68inch/17.3mm

2.0inch

1.67inch

0.6inch

2.0inch

Image 3.1: Detailed dimensions of the flagpole holder components.

Ensure the hitch mount is securely installed in the vehicle's 2-inch receiver with the provided hitch pin.

- Follow these steps to install the Nilight Hitch Mount Flagpole Holder:

1. **Insert into Hitch Receiver:** Slide the square tube of the flagpole holder into your vehicle's 2-inch hitch receiver. The holder offers 3 hole positions for adjustment. Select the position that provides optimal clearance for your spare tire or tailgate. The maximum space for a spare tire or tailgate is 13 inches wide. **Note:** Measure your spare tire's thickness to confirm compatibility. Tailgates may only rest down halfway with the holder installed.



Image 5.1: The hitch mount offers three adjustable positions for optimal clearance.

2. **Secure the Holder:** Align the holes on the flagpole holder's square tube with the pinhole on your hitch receiver. Insert the provided hitch pin through the aligned holes and secure it with the hitch pin clip. Ensure the pin is fully engaged and the clip is locked.
3. **Prepare for Flagpole Insertion:** The bottom of the flagpole holder is fully open to prevent water or dirt buildup and allow the pole to rest on the ground if desired. If you need to close the bottom for shorter poles or specific applications, use the provided square wire lock pin by inserting it through the designated holes at the bottom of the tube.

BOTTOM OPENING

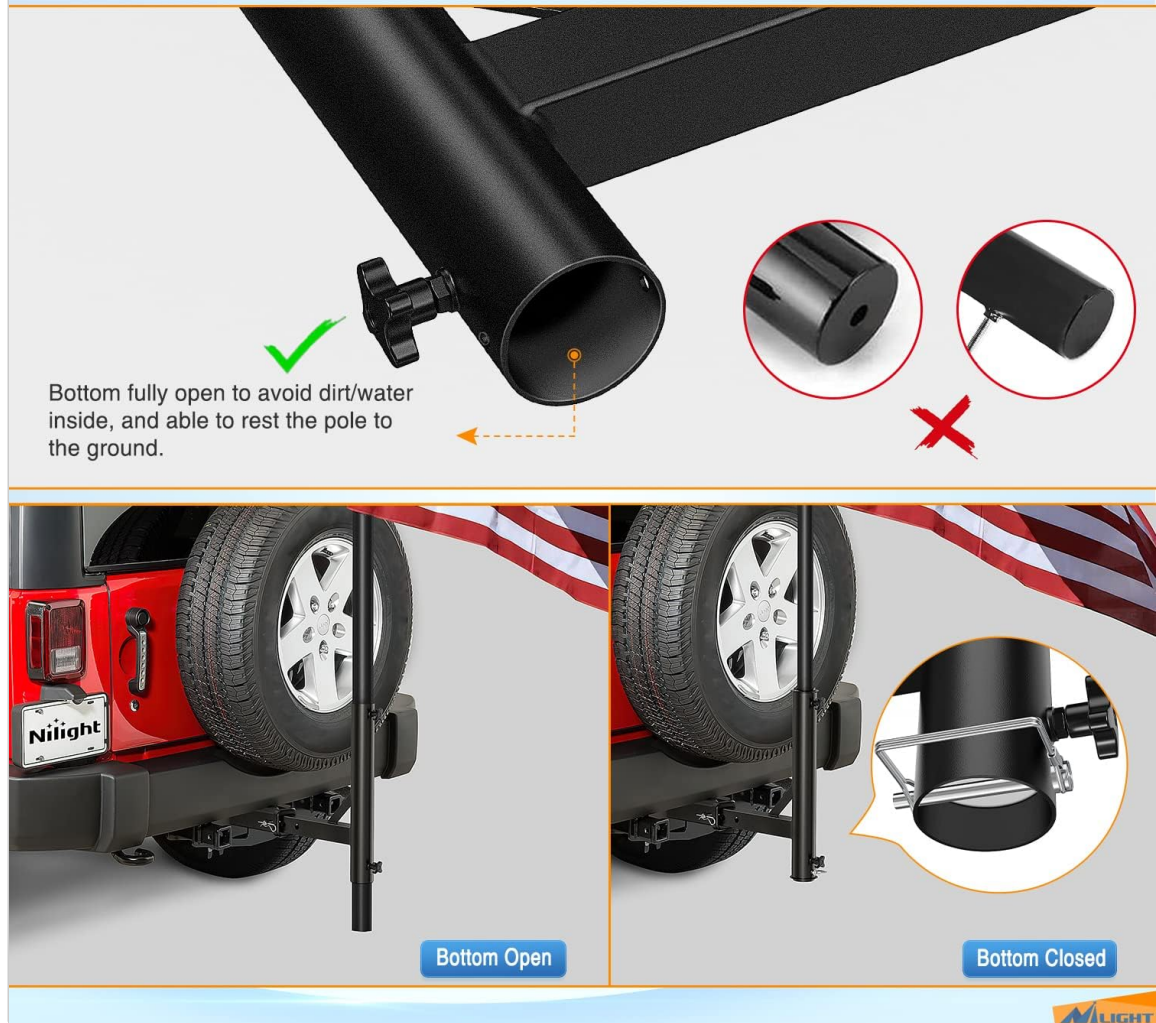


Image 5.2: The open bottom design and the optional square wire lock pin for closing the bottom.

4. **Insert Flagpole:** Place your flagpole or desired item into the vertical tube of the holder. The holder accommodates diameters from 1 inch to 2.3 inches. For poles equal to or less than 2 inches in diameter, you may optionally use the two 2-inch flange pipe sockets to ensure a snug fit and reduce movement.

HIGH COMPATIBILITY

Compatible with different pole sizes range from 1" to 2.3" in diameter



Install pole/stick larger than 2", and limits to 2.3" maximum in diameter

Install pole/stick equal to or less than 2", and limits to 1" minimum in diameter

! Note: To protect the pole/sticks you can do some wrap at the position before mounting.



Image 5.3: The holder supports various pole diameters, with optional flange pipe sockets for smaller poles.

5. **Secure Flagpole:** Tighten the two knob-type mounting screws on the side of the vertical tube to firmly fix the flagpole in place. Ensure the flagpole is stable and does not wobble.

6. OPERATION

Once installed, the Nilight Hitch Mount Flagpole Holder can be used for various purposes:

- **Flag Display:** Securely fly your flag during parades, while driving, or when parked. Ensure the flag size is appropriate for safe travel.
- **Antenna Mounting:** The holder can be used to mount various types of antennas for communication or other applications.
- **Umbrella Holder:** On stationary vehicles, the holder can support a patio umbrella for shade.



ALIGHT

Image 6.1: Various applications of the hitch mount flagpole holder, including flags, antennas, and umbrellas.

7. MAINTENANCE

To ensure the longevity and proper function of your flagpole holder:

- **Cleaning:** Clean the holder periodically with mild soap and water to remove dirt, dust, and road grime. Rinse thoroughly and dry.
- **Inspection:** Regularly check all components, including the main structure, hitch pin, clip, and knob screws, for any signs of corrosion, bending, cracks, or other damage.
- **Fasteners:** Ensure all screws and pins remain tight. Re-tighten as necessary.
- **Storage:** When not in use for extended periods, store the flagpole holder in a dry place to prevent rust and prolong its lifespan.

8. TROUBLESHOOTING

- **Flagpole is Loose:** Ensure the knob-type mounting screws are fully tightened. If using a flagpole with a diameter less than 2 inches, consider using the provided flange pipe sockets for a more secure fit.
- **Hitch Mount is Loose in Receiver:** Verify that the hitch pin is fully inserted and secured with the





clip. If excessive play exists, a hitch tightener (not included) may be used to reduce movement.

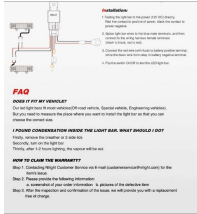
- **Tailgate/Spare Tire Clearance Issues:** Adjust the flagpole holder to one of the three available hole positions in the hitch receiver to optimize clearance. Measure your spare tire's thickness before installation to ensure compatibility.
- **Difficulty Inserting Flagpole:** Check the flagpole diameter to ensure it is within the 1 to 2.3-inch range. Clean any debris from inside the holder tube.

9. WARRANTY AND SUPPORT

The Nilight Hitch Mount Flagpole Holder comes with a 2-year warranty. For warranty claims, technical assistance, or any questions regarding the product, please contact Nilight customer support through their official website or the retailer where the product was purchased. Please have your model number (91068A) and proof of purchase available when contacting support.

Related Documents - 91068A

	<p>Nilight 60 Inch Truck Bed Light Strip Installation Guide</p> <p>Step-by-step installation guide for the Nilight 60-inch truck bed light strip, detailing wire placement, mounting, electrical hook-up, and the use of additional hardware for pickup trucks, SUVs, and RVs.</p>
	<p>Nilight 2" Rear Trailer Hitch Receiver Installation Guide for Jeep Wrangler JL</p> <p>Step-by-step installation instructions for the Nilight 2-inch rear trailer hitch receiver compatible with Jeep Wrangler JL models. Includes towing capacity information and required tools.</p>
	<p>LED Light Mounting Instructions</p> <p>Step-by-step guide for mounting LED lights, including clamp installation, light attachment, angle adjustment, and final tightening.</p>
	<p>Nilight 5 Gang Switch Panel Installation and Wiring Guide</p> <p>A guide to installing and wiring the Nilight 5 Gang Switch Panel, including wiring diagrams and disconnection instructions.</p>



[Nilight LED Light Bar Installation and FAQ - ZH303 Model](#)

Learn how to install your Nilight ZH303 LED light bar, troubleshoot common issues like condensation, and understand the warranty claim process. Includes wiring diagram explanation.



[Nilight Rear Bumper Installation Guide for Jeep Wrangler JK](#)

Comprehensive installation instructions for the Nilight JK-52A Rear Bumper, designed for 2007-2018 Jeep Wrangler JK models. Includes parts list, step-by-step assembly, and tips.