

roborock Q5+

roborock Q5+ Robot Vacuum with Self-Empty Dock Instruction Manual

1. SETUP

Before first use, ensure the robot vacuum is fully charged. The robot will indicate "charging" when correctly connected to the charging dock. It is recommended to fully charge the device before its initial cleaning cycle.

The roborock Q5+ robot vacuum supports 2.4G WiFi networks only. When connecting the robot to your home network, ensure your smartphone is connected to a 2.4G WiFi network.

Place the Self-Empty Dock in an area with sufficient clearance for the robot to maneuver. Avoid moving the robot manually during cleaning to prevent it from losing its direction or failing to return to the dock.



Image: roborock Q5+ Robot Vacuum and Self-Empty Dock in a living room setting.

2. OPERATING INSTRUCTIONS

2.1 Hands-Free Cleaning with Self-Empty Dock

The Self-Empty Dock automatically empties the Q5's dustbin after each cleaning session. The 2.5L dust bag can hold dirt and debris for up to 7 weeks, providing extended hands-free operation.

Clean Harder with 2700Pa Powerful Suction



Image: The roborock Q5+ robot vacuum docked at its self-empty station, illustrating the 7-week hands-free cleaning capability with a 2.5L dust bag.

2.2 Navigation and Mapping

The Q5+ utilizes PreciSense LiDAR Navigation to create precise maps of your home, which can be viewed in 3D within the accompanying mobile application. This technology allows for efficient and thorough cleaning paths.

Advanced App Control

Support 4-level mapping, set No-Go Zones, and Invisible Walls.

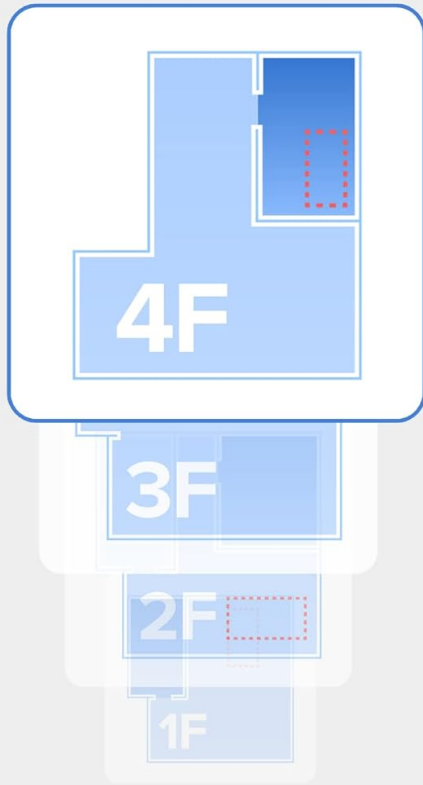


Image: An illustration demonstrating the robot's PreciSense LiDAR Navigation creating 3D maps and advanced cleaning schedules for different rooms.

2.3 App and Voice Control

Control the robot vacuum using the dedicated mobile application. The app supports 4-level mapping and allows you to set No-Go Zones and Invisible Walls to restrict the robot's cleaning areas. Voice control is also available through compatible devices like Amazon Alexa and Google Home.

Voice Control

Support Amazon Alexa, Google Home, and Siri Shortcuts.

"Alexa, ask robo rock to start cleaning"

"Alexa, ask robo rock to start emptying"

"Alexa, ask robo rock to recharge"

Image: Screenshots from the mobile app showing 4-level mapping, No-Go Zones, and Invisible Walls features. The robot is shown operating near these virtual boundaries.

Keeps Going for Longer



Image: The robot vacuum and smart home devices (Alexa, Google Home) illustrating voice commands such as "Alexa, ask roborock to start cleaning" and "Alexa, ask roborock to start emptying."

2.4 Suction Power and Brush System

The Q5+ features a powerful 2700 Pa Max Suction, effectively lifting debris and pet hair from various surfaces, including hard floors and carpets. The multi-plane floating main brush maintains close contact with the floor for deeper cleaning and is designed to resist hair tangles.

Clean Smarter with PreciSense LiDAR Navigation

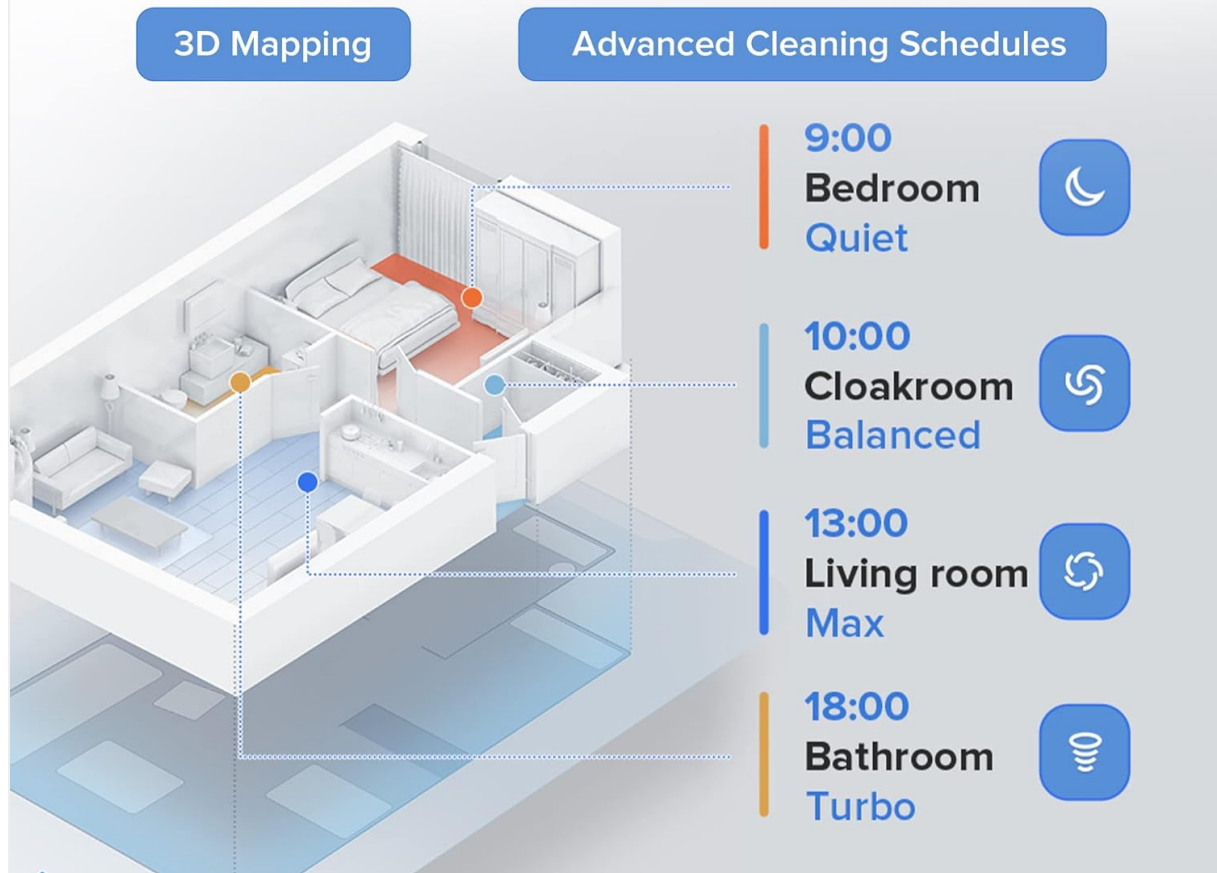


Image: An overhead view of the robot vacuum demonstrating its 2700 Pa powerful suction, lifting dirt and debris from a carpeted surface.



Image: A close-up view of the multi-directional floating main brush, highlighting its design to resist hair tangling and effectively clean various floor types.

3. MAINTENANCE

3.1 Self-Empty Dock Dust Bag

The 2.5L dust bag in the Self-Empty Dock should be replaced approximately every 7 weeks, depending on usage and household debris levels. The dock will alert you when the bag needs changing.

3.2 Washable Filter

The robot vacuum's filter is washable. Regularly clean the filter to maintain optimal suction performance. Ensure the filter is completely dry before reinserting it into the robot.

3.3 Main Brush and Side Brush

Periodically check and clean the main brush and side brush for tangled hair or debris. Remove any obstructions to ensure efficient cleaning. The multi-plane floating main brush is designed to resist tangles, but occasional cleaning is still recommended, especially in homes with pets.

For optimal performance, ensure the roller brush cover is correctly installed. If any of the four tabs are visible, the cover is not fully seated, which can affect the self-emptying function.

3.4 Sensors

Wipe the robot's sensors with a soft, dry cloth periodically to ensure accurate navigation and obstacle avoidance.

Your browser does not support the video tag.

Video: An official roborock video showcasing the Q5+ Robot Vacuum with Self-Empty Dock, demonstrating its features and operation.

4. TROUBLESHOOTING

4.1 Wi-Fi Connection Issues

If the robot fails to connect to Wi-Fi, ensure your router is broadcasting a 2.4G WiFi signal. The roborock Q5+ does not support 5G WiFi. Try disabling mobile data and any ad-blocker apps on your phone during the setup process.

4.2 Robot Getting Lost or Not Returning to Dock

Avoid manually moving the robot during a cleaning cycle. This can disorient the device and prevent it from accurately returning to its charging dock. Allow the robot to complete its cycle uninterrupted.

4.3 Self-Emptying Malfunction

If the dustbin is not emptying, verify that the roller brush cover is correctly installed. All four tabs must be fully seated and not visible. A loose cover can reduce suction, preventing proper emptying. If issues persist, a factory reset may be necessary (refer to the app for reset instructions).

5. SPECIFICATIONS

Feature	Specification
Brand	roborock
Model Name	roborock Q5+
Special Features	LiDAR Navigation, Pet Hair Pick Up, Powerful 2700 Pa Suction, No-Go Zones and Invisible Walls, Multi-Level Mapping, App Control, Voice Control, Floating Main Brush, Scheduling, Self-Emptying
Color	Black
Product Dimensions	13.78"L x 13.78"W x 3.8"H
Included Components	1* Q5 Robot Vacuum Cleaner, 1* Auto Empty Dock Pure, 1* Power Cable, 1* User Manual

Filter Type	Washable
Battery Life	180 minutes
Capacity (Dust Bag)	2.5 Liters
Power Source	Battery Powered
Control Method	App, Voice
Compatible Devices	Amazon Echo, Google Home, Smartphones
Surface Recommendation	Hard Floor, Carpet, Wood, Tile

6. WARRANTY AND SUPPORT

6.1 Warranty Information

The roborock Q5+ Robot Vacuum comes with a 1-year warranty. Please refer to the included User Manual for detailed warranty terms and conditions.

6.2 Customer Support

For further assistance, troubleshooting, or warranty claims, please contact roborock customer support. Contact details can be found in your User Manual or on the official roborock website.