

Manuals.plus /

› APOLLOLIFT /

› APOLLOLIFT Full Electric Stacker (Model A-3047) - 3300 lbs Capacity, 118" Lift Height User Manual

## APOLLOLIFT A-3047



### APOLLOLIFT Full Electric Stacker (Model A-3047) - 3300 lbs Capacity, 118" Lift Height User Manual

#### 1. INTRODUCTION

This manual provides essential information for the safe and efficient operation, assembly, and maintenance of your APOLLOLIFT Full Electric Stacker, Model A-3047. Please read this manual thoroughly before operating the equipment to ensure proper usage and to prevent injury or damage.

The APOLLOLIFT Full Electric Stacker is designed for material handling, offering a 3300 lbs load capacity and a maximum lifting height of 118 inches. It features powered drive and lift, straddle legs, and adjustable forks for versatile use in various industrial and warehouse environments.

#### 2. SAFETY INFORMATION

Your safety and the safety of others are paramount. Always adhere to the following safety guidelines:

- **Operator Training:** Only trained and authorized personnel should operate this equipment.
- **Work Environment:** Operate the stacker exclusively on flat, even surfaces. Avoid uneven grounds, potholes, or steep slopes to prevent instability and accidents.
- **Load Capacity:** Never exceed the rated load capacity of 3300 lbs. Refer to the load curve diagram for safe load distribution at different heights.
- **Safety Features:** The stacker is equipped with a safety explosion-proof valve to prevent uncontrolled load free-fall. Warning lights and a buzzer are integrated to enhance operational safety. Ensure these are functional before use.
- **Emergency Stop:** Familiarize yourself with the emergency stop button for immediate shutdown in critical

situations.

- **Personal Protective Equipment (PPE):** Always wear appropriate PPE, including safety shoes and hard hats, when operating the stacker.
- **Clearance:** Maintain a safe distance from personnel, obstacles, and other equipment during operation.

### 3. SETUP AND ASSEMBLY

The APOLLOLIFT Full Electric Stacker requires partial assembly, specifically the installation of the forks and straddle legs. Follow these steps carefully:

#### 3.1 Unpacking

Carefully remove all packaging materials. Inspect the stacker for any signs of damage during transit. Keep all components organized for assembly.

#### 3.2 Straddle Legs Installation

The straddle legs are adjustable to accommodate various pallet sizes. Ensure they are securely attached and tightened according to the instructions.



Image: Straddle legs and adjustable forks. The image shows the adjustable straddle legs and forks, highlighting their width and length specifications.

For a visual guide on the installation process, refer to the following video:

Your browser does not support the video tag.

Video: Electric stackers installation. This video demonstrates the step-by-step installation of electric stacker components, including the straddle legs and forks.

### 3.3 Fork Installation

Install the forks onto the mast assembly. Ensure they are properly aligned and secured. The forks are adjustable in width from 7.9 to 31.5 inches.



Image: Adjustable fork width for various pallets. This image illustrates the adjustable fork width, suitable for different types of pallets and skids.

#### 4. OPERATING INSTRUCTIONS

Operating the APOLLOLIFT Electric Stacker requires attention to detail and adherence to safety protocols. Familiarize yourself with the controls and functions before use.

##### 4.1 Controls Overview

The ergonomic handle provides effortless one-hand control for driving, lifting, and lowering. It includes an emergency reverse button and a horn.

# ERGONOMIC HANDLE

## Effortless One-Hand Control



Image: Ergonomic handle with controls. This image details the ergonomic handle, showing the emergency button, horn, fork control, drive control, and turtle mode button.

### 4.2 Starting the Stacker

1. Insert the key into the key switch and turn it to the ON position.
2. Check the multifunctional display for battery level and any fault indicators.

### 4.3 Driving and Steering

The stacker features a centrally mounted drive wheel and a minimum turning radius of 53 inches, allowing for efficient operation in tight spaces.

- **Forward/Reverse:** Use the accelerator knob on the handle for forward and reverse movement.
- **Steering:** Guide the stacker by maneuvering the handle.
- **Turtle Mode:** For very narrow spaces or precise movements, activate the turtle mode for reduced speed.



**With a 53" turning radius, the stacker can operate efficiently in narrow spaces**

Image: Stacker turning radius in narrow spaces. This image demonstrates the stacker's ability to operate efficiently in narrow aisles due to its 53-inch turning radius.

#### **4.4 Lifting and Lowering**

Use the fork control buttons on the ergonomic handle to raise or lower the forks. The safety explosion-proof valve prevents free-fall even if hydraulic hoses rupture.



Image: Stacker dimensions and lift heights. This image provides key dimensions including mast height raised (143.5"), mast height lowered (84.4"), max lift height (118"), fork lowered height (2.8"), and overall length (68.9").

Your browser does not support the video tag.

Video: APOLLLOLIFT Full Electric Stacker Forklifts. This video demonstrates the operation of the APOLLLOLIFT Full Electric Stacker, showcasing its lifting and driving capabilities.

Your browser does not support the video tag.

Video: See video for unloading. This video provides a demonstration of the unloading process using the electric stacker.

## 5. MAINTENANCE

Regular maintenance ensures the longevity and safe operation of your electric stacker.

- **Battery Charging:** The stacker features a built-in charger for convenience. Connect the charger to a standard power outlet when the battery indicator shows low voltage.
- **Daily Inspection:** Before each use, check for any visible damage, loose connections, or unusual noises. Ensure all controls are functioning correctly.
- **Cleaning:** Keep the stacker clean, especially the mast and fork mechanisms, to prevent debris buildup that could hinder operation.
- **Lubrication:** Periodically lubricate moving parts as recommended in the full service manual (not provided here).

## 6. TROUBLESHOOTING

If you encounter issues with your electric stacker, consider the following basic troubleshooting steps:

- **No Power:** Check the key switch position, emergency stop button, and battery charge level. Ensure the battery is properly connected.
- **Lifting Issues:** Verify the load does not exceed capacity. Check for any obstructions in the mast or fork mechanism.
- **Movement Issues:** Ensure the drive control is engaged and the accelerator knob is functioning. Check for any obstructions around the wheels.
- **Fault Light:** If the fault light is illuminated, consult the full service manual for error code interpretation or contact customer support.

## 7. SPECIFICATIONS

Specification	Value
Brand	APOLLLOLIFT
Model Number	A-3047
Material	Alloy Steel
Load Capacity	3300 Pounds
Max Lifting Height	118 inches
Mast Lowered Height	84.4 inches
Mast Extended Height	143.5 inches
Width Overall Forks	7.9-31.5 inches
Product Dimensions	68.9"L x 45.9"W x 84.4"H
Wheel Type	PU
Number of Wheels	3
Caster Wheel Diameter	1.95 Inches
Style	Compact

## Load curve diagram

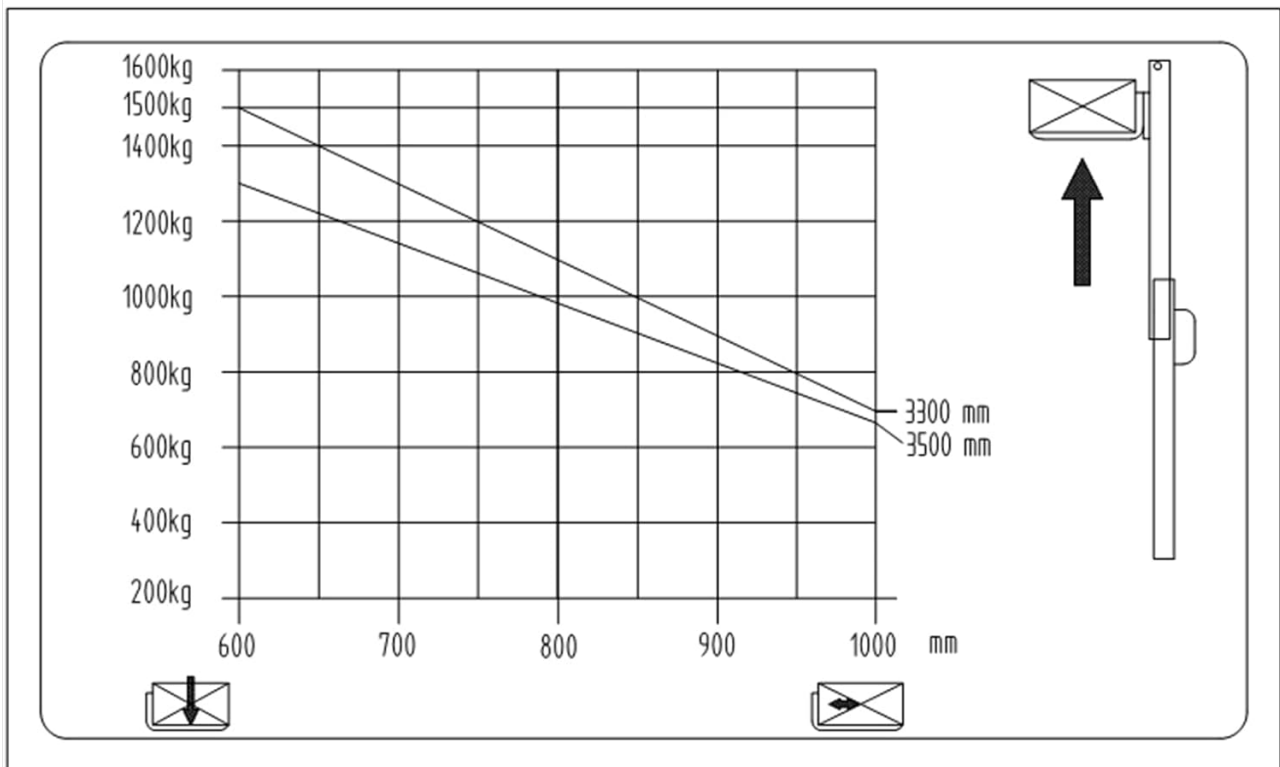


Image: Load curve diagram. This diagram illustrates the safe load capacity at various lift heights for the stacker.

## **8. WARRANTY AND SUPPORT**

For warranty information, technical support, or service inquiries, please contact APOLLOLIFT customer service. Keep your purchase receipt and product model number (A-3047) handy for faster assistance.