

SMALLRIG 3168B

SmallRig NP-F Battery Adapter Mount Plate 3168B User Manual

Model: 3168B

1. INTRODUCTION

The SmallRig NP-F Battery Adapter Mount Plate 3168B is designed to provide a versatile power solution for various cameras, including BMPCC 4K, 6K, 6K Pro, Canon R5 C, and other mirrorless cameras. It supports a wide range of NP-F series batteries (NP-F970, NP-F550, NP-F770, etc.) and features dual DC outputs (7.4V and 12V) as well as a bi-directional USB-C port for charging and power output. This manual provides detailed instructions for setup, operation, maintenance, and troubleshooting.

2. WHAT'S IN THE BOX

Please check the contents of your package to ensure all items are present:

- NP-F Battery Adapter Mount Plate (Advanced Edition) x 1
- 1/4"-20 Screw x 1
- 5/32" L-Shaped Allen Wrench x 1
- User Manual x 1

In the Box

NP-F Battery Adapter Mount Plate (Advanced) × 1

5/32" L-Shaped Allen Wrench × 1

1/4"-20 Screw × 1

User Manual × 1



Specifications

ID

3168B

Product Dimensions

94.0 × 47.0 × 23.0mm

Package Dimensions

102.0 × 78.0 × 30.0mm

Product Weight

113.5 ± 5g

Package Weight

145.5 ± 5g

Material(s)

CNC

Image: Contents of the product package, including the battery plate, screw, and wrench.

3. PRODUCT OVERVIEW AND FEATURES

The SmallRig NP-F Battery Adapter Mount Plate 3168B is engineered for durability and high performance. Key features include:

- **Wide Compatibility:** Supports NP-F970, NP-F550, NP-F770, and other NP-F series batteries, including original Sony and third-party batteries.
- **Dual DC Outputs:** Provides 7.4V (max 22W) and 12V (max 36W) DC outputs, compatible with DC 5521 and DC 5525 cables.
- **USB-C Port:** Bi-directional 36W USB-C interface for power output or charging NP-F batteries.
- **Automatic Wake-up and Sleep Modes:** Plug-and-play functionality with short circuit and high current protection.
- **Battery Indicators:** Four LED lights to check battery connection and remaining life.
- **Durable Construction:** Made from premium CNC aluminum alloy with gold-plated electrical contacts and a rubber pad to prevent scratches.

3.1 Component Identification

Product Details Display



Image: Detailed diagram of the battery plate's components.

1. **DC 12V Output Port:** Maximum output 36W.
2. **Power Button:** Press to check battery status.
3. **Battery Indicator:** Four LED lights to show battery life.
4. **DC 7.4V Output Port:** Maximum output 22W.
5. **USB-C In/Output Port:** Bi-directional, maximum input/output 36W.
6. **USB-C Charging Indicator:** Orange for slow charge / slow discharge, blue for fast charge / fast discharge.
7. **Gold-plated Electrical Contacts:** For stable and conductive connection.
8. **Mounting Screw:** 1/4"-20 threaded hole for attachment.
9. **Inner Thread:** For mounting/removing screws.
10. **Self-locking Button:** For quick and secure battery installation.
11. **Rubber Pad:** Prevents scratches to cameras and devices.

4. SETUP

Follow these steps to set up your SmallRig NP-F Battery Adapter Mount Plate:

1. **Attach to Camera Rig/Cage:** Use the integrated 1/4"-20 threaded hole and the provided screw to securely attach the battery plate to your camera cage, handle, or other mounting points. Ensure it is firmly tightened using the L-shaped Allen wrench.
2. **Insert NP-F Battery:** Align your NP-F series battery (e.g., NP-F970, NP-F550) with the battery slot

on the plate. Gently slide the battery into place until the self-locking button engages, securing the battery.

3. Connect to Device:

- For DC-powered devices (e.g., BMPCC 4K/6K, Canon R5 C): Use a compatible DC 5521 or DC 5525 cable (not included) to connect the appropriate DC output port (7.4V or 12V) on the plate to your camera or device.
- For USB-C powered devices: Use a USB-C to USB-C cable (not included) to connect the USB-C port on the plate to your device (e.g., smartphone, tablet, camera).

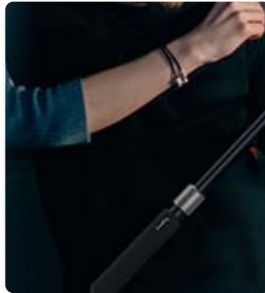


Image: Battery plate mounted on a camera setup.

5. OPERATING INSTRUCTIONS

5.1 Powering Devices

Once a compatible NP-F battery is inserted, the plate automatically wakes up and is ready to supply power. Simply connect your device to the desired output port.



Image: Higher output power details for DC 12V and USB-C ports.

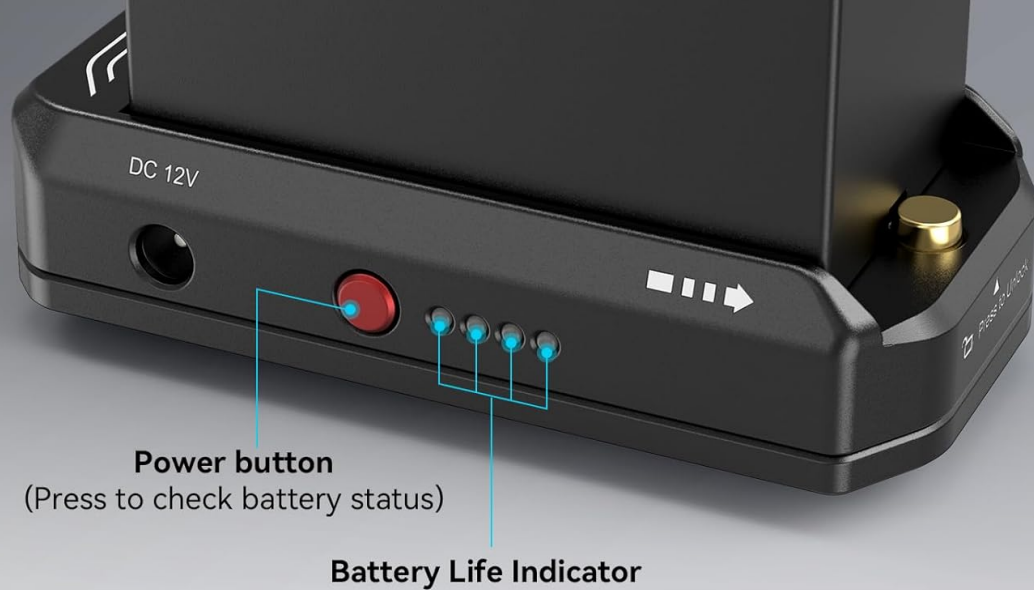
5.2 Checking Battery Status

Press the red power button on the side of the plate to check the remaining battery life. The four LED indicators will illuminate according to the charge level:

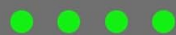
- ● ● ● 75% - 100%
- ● ● ● 50% - 75%
- ● ● ● 25% - 50%
- ● ● ● 10% - 25%

When the power level falls below 10%, the last indicator will start flashing to alert you to a low battery.

Indicators to Check Battery Status



75% - 100%



50% - 75%



25% - 50%



10% - 25%



When the power level falls below 10%, the last indicator will start flashing to alert you to a low battery

Image: Battery status indicators.

5.3 Charging NP-F Batteries via USB-C

The USB-C port supports bi-directional power. To charge an NP-F battery inserted in the plate, connect a USB-C power source (e.g., wall adapter, power bank) to the USB-C port on the plate using a USB-C to USB-C cable. The USB-C charging indicator will show:

- **Orange:** Slow charge / slow discharge.
- **Blue:** Fast charge / fast discharge.

6. MAINTENANCE

- **Cleaning:** Use a soft, dry cloth to clean the surface of the battery plate. Do not use harsh chemicals or abrasive materials.
- **Storage:** Store the plate in a cool, dry place away from direct sunlight and extreme temperatures when not in use.
- **Contacts:** Periodically inspect the gold-plated electrical contacts for any debris or corrosion. Clean gently if necessary to ensure optimal conductivity.
- **Avoid Water:** This product is not waterproof. Avoid exposure to water or high humidity.

7. TROUBLESHOOTING

Problem	Possible Cause	Solution
No power output from DC ports.	Battery not inserted correctly or depleted.	Ensure battery is fully seated and charged. Press power button to check status.
USB-C port not charging or powering device.	Incorrect cable, power source insufficient, or battery depleted.	Use a compatible USB-C to USB-C cable. Ensure power source meets 36W requirement for optimal charging. Check battery level.
Battery indicator LEDs not lighting up.	Battery not inserted, or power button not pressed.	Ensure battery is fully inserted. Press the red power button firmly.
Plate feels warm during operation.	Normal operation under heavy load.	This is normal. If it becomes excessively hot, disconnect and allow to cool. Ensure proper ventilation.

8. SPECIFICATIONS

Feature	Detail
Model Number	3168B
Product Dimensions	3.69 x 1.85 x 0.92 inches (94.0 x 47.0 x 23.0 mm)
Item Weight	0.176 ounces (5g)
Material	CNC Aluminum Alloy
DC 12V Output	Max 36W (compatible with DC 5525 cable)
DC 7.4V Output	Max 22W (compatible with DC 5521 cable)
USB-C Input/Output	Bi-directional, Max 36W
Compatible Batteries	NP-F970, NP-F550, NP-F770, NP-F960, NP-F950, NP-F930, NP-F750, NP-F730, NP-F570 (Sony original and third-party)
Mounting Type	1/4" threaded hole

Charge Other Devices

Charging Other Devices via USB-C to USB-C Cable



Image: Product dimensions and specifications.

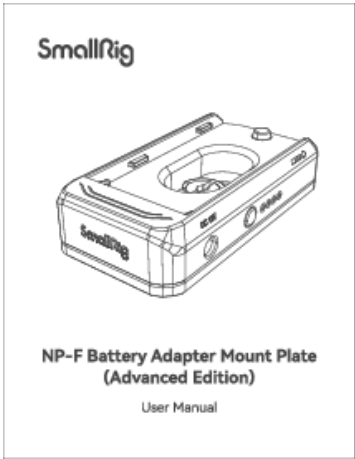
9. WARRANTY AND SUPPORT

SmallRig products are designed and manufactured to high-quality standards. For warranty information and technical support, please visit the official SmallRig website or contact their customer service directly.

Official SmallRig Website: www.smallrig.com

For further assistance, refer to the user guide PDF available at: [SmallRig NP-F Battery Adapter Mount Plate User Guide \(PDF\)](#)

© 2024 SMALLRIG. All rights reserved.

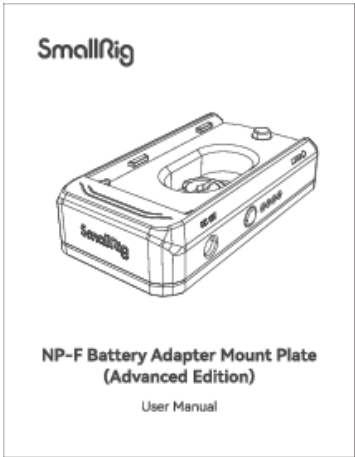


[\[pdf\]](#) Warranty Label

3168B—— Manufacturer Shenzhen Leqi Network Technology Co Ltd Add Rooms 103 501 and 601 Building 5 Fenghe Industrial Park Nos 1301 50 Guanguang Road Longhua 1696934617382 image smallrig public |||

Service Warranty Please keep your original receipt and guarantee card. Be sure the dealer has written on it the date of purchase and SN of the product. These are required for warranty service. After-sale warranty terms: 1. 7 Days DOA Return Policy: Within 7 days from the date of the package rec...

lang:en score:22 filesize: 3.49 M page_count: 8 document date: 2023-09-25



[\[pdf\]](#)

SmallRig NP F Battery Adapter Mount Plate Advanced Edition 3168B Title Created Date 1 24 2024 5 21 17 PM 1706168503420 image smallrig public |||

...

lang:en score:15 filesize: 2.18 M page_count: 6 document date: 2024-01-24