

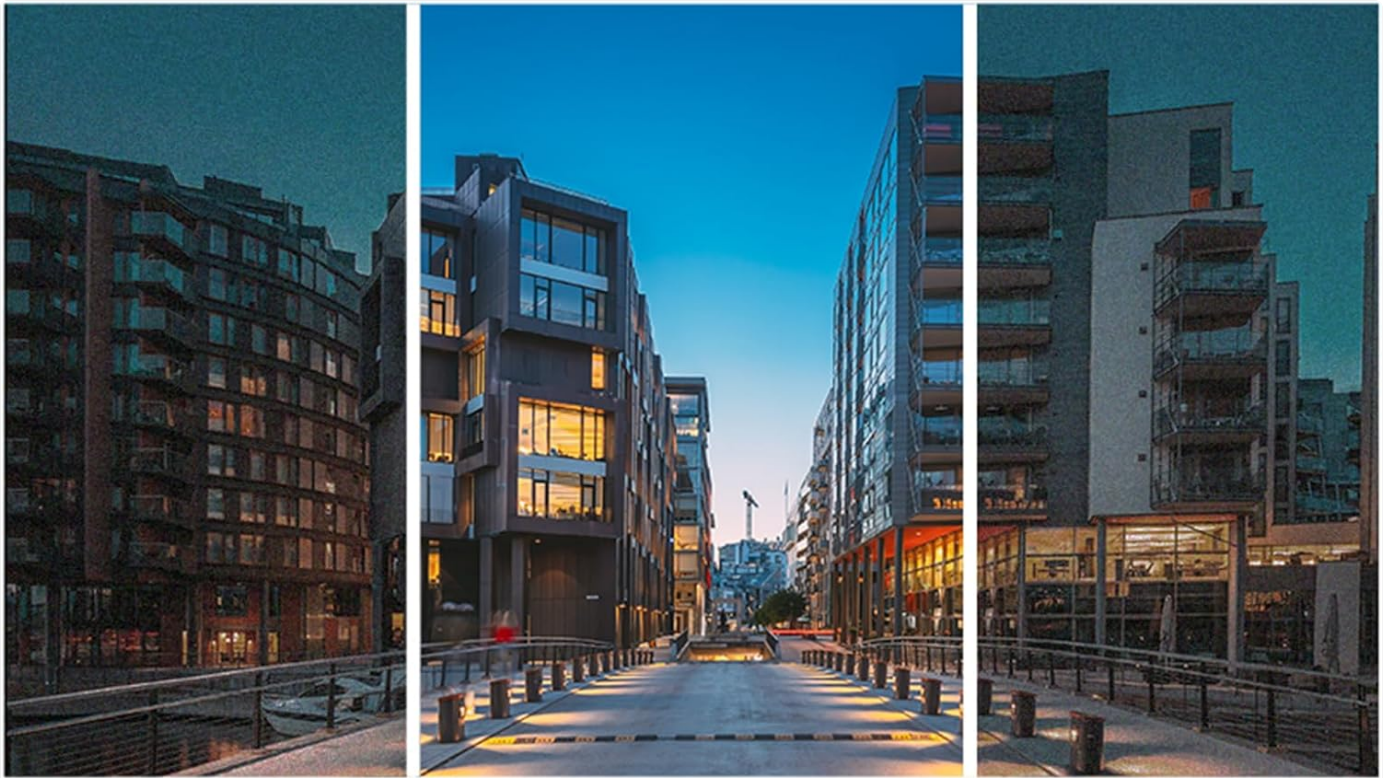
70mai RC09

70mai RC09 Rear Camera for A400 Dash Cam User Manual

Model: RC09 | Brand: 70mai

1. INTRODUCTION

The 70mai RC09 Rear Camera is designed to enhance driving safety by providing a comprehensive view of the rear of your vehicle. This camera is specifically compatible with the 70mai A400 Dash Cam, enabling dual-channel recording for full vehicle coverage. It features 1080p Full HD resolution, a 140-degree wide-angle field of view, and advanced night vision capabilities to ensure clear recordings in various lighting conditions. The RC09 also boasts an IP67 water resistance rating, making it suitable for outdoor use.



Normal Image

3D DNR + WDR

Normal Image

Image: A clear view of the 70mai RC09 Rear Camera, showcasing its compact design and lens.

2. PACKAGE CONTENTS

Before installation, please verify that all components are present:

- 1 x 70mai RC09 Rear Camera
- 2 x Connection Cables
- 1 x User Manual

3. SETUP AND INSTALLATION

The 70mai RC09 Rear Camera is intended for installation at the rear of your vehicle and connects directly to your 70mai A400 Dash Cam. Ensure your A400 Dash Cam is properly installed and functioning before proceeding with the rear camera installation.

3.1 Mounting the Rear Camera

1. **Choose a Location:** Select a suitable location on the rear windshield or license plate area that provides an unobstructed view. Ensure the camera is centered for optimal coverage.
2. **Clean the Surface:** Thoroughly clean and dry the mounting surface to ensure proper adhesion of the camera's adhesive pad.
3. **Attach the Camera:** Remove the protective film from the adhesive pad on the camera bracket and firmly press the camera onto the chosen location. Hold for a few seconds to secure.



The 70mai hardwire kit is required for parking surveillance mode,
and is sold separately.

Image: The 70mai RC09 Rear Camera securely mounted on the interior of a car's rear windshield, demonstrating a typical installation position.

3.2 Cable Routing and Connection

1. **Route the Cable:** Carefully route the provided connection cable from the rear camera to the location of your 70mai A400 Dash Cam. It is recommended to tuck the cable along the vehicle's headliner, A-pillars, and door sills to keep it neat and out of the way.
2. **Connect to A400:** Plug the rear camera cable into the designated rear camera port on your 70mai A400 Dash Cam. Refer to your A400 Dash Cam manual for the exact port location.
3. **Test Connection:** Power on your A400 Dash Cam and verify that the rear camera feed is displayed on the dash cam screen or accessible via the 70mai app.

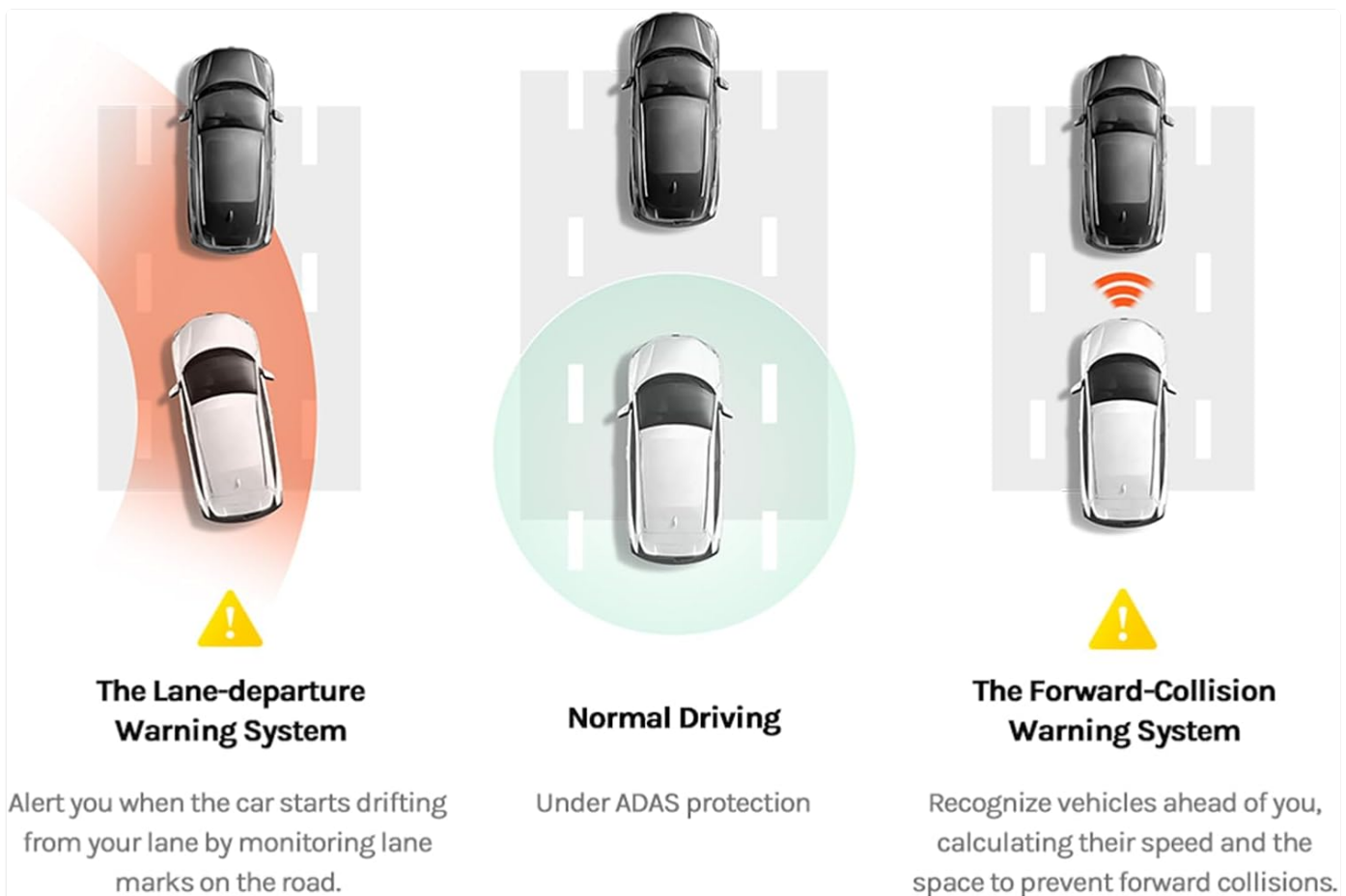


Image: An illustrative diagram demonstrating the recommended method for routing the rear camera's connection cable neatly along the vehicle's interior trim.

4. OPERATING INSTRUCTIONS

Once connected to the 70mai A400 Dash Cam, the RC09 Rear Camera operates in conjunction with the dash cam to provide dual-channel recording. The rear camera feed will be integrated into the A400's recording and viewing functions.

4.1 Recording

- The RC09 records in 1080p Full HD resolution, capturing clear video footage from the rear of your vehicle.
- Recordings are automatically saved to the memory card inserted in your A400 Dash Cam.
- The 140-degree wide-angle lens minimizes blind spots, providing extensive coverage.

4.2 Night Vision

The RC09 features enhanced night vision capabilities, allowing it to capture clear and sharp images even in low-light conditions or at night. This ensures continuous monitoring and recording quality regardless of ambient light.



Image: A visual comparison demonstrating the improved clarity and detail achieved with 3D DNR (Digital Noise Reduction) and WDR (Wide Dynamic Range) technologies in low-light conditions, compared to a normal image.

4.3 Parking Surveillance Mode

For continuous monitoring when your vehicle is parked, the RC09 can contribute to the parking surveillance mode of your A400 Dash Cam. This feature requires the 70mai Hardwire Kit, which is sold separately. When enabled, the camera will record events even when the vehicle is off, providing protection against incidents like collisions or vandalism.

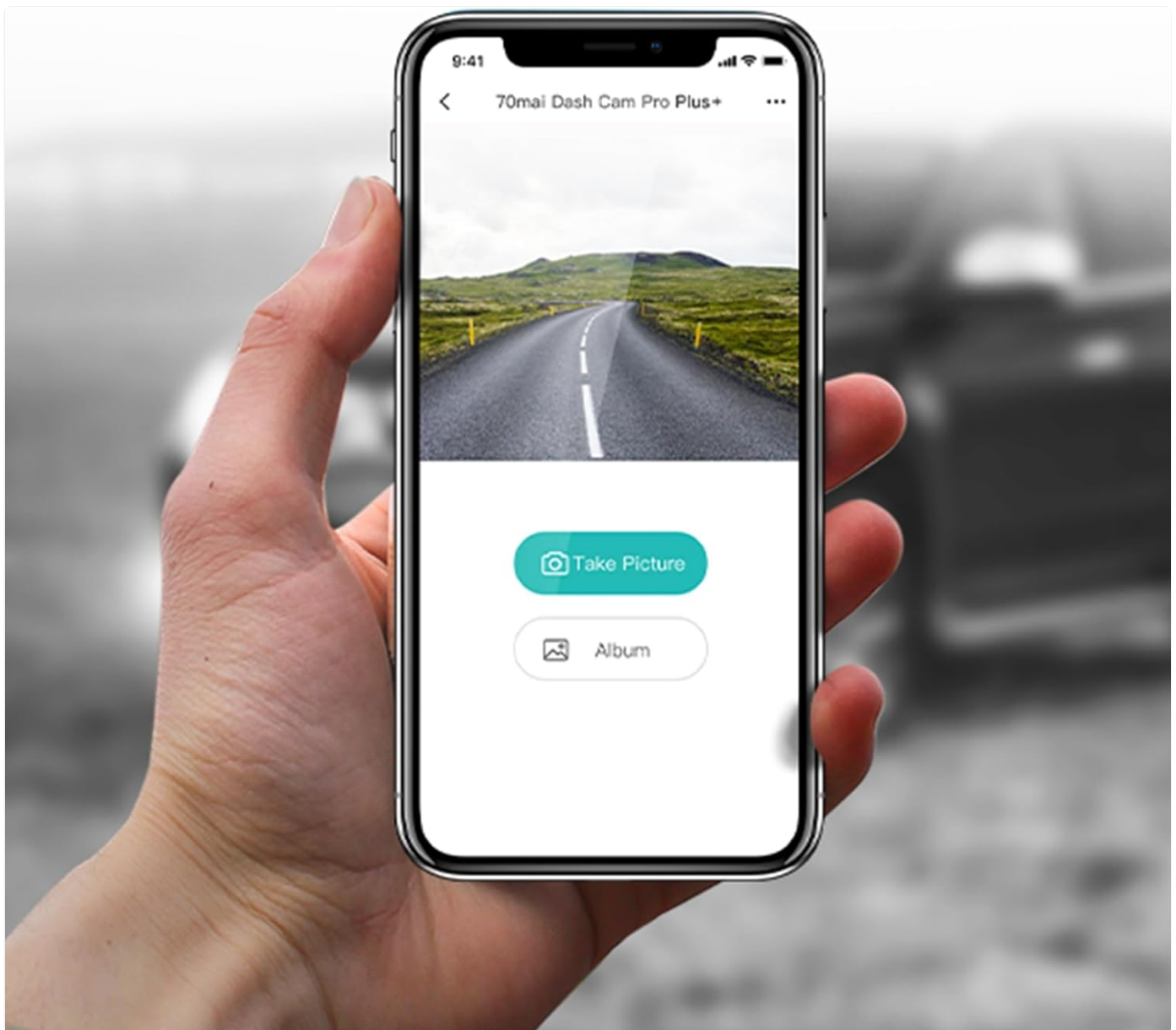


Image: A smartphone screen displaying the 70mai mobile application interface, showing a live camera view and options to 'Take Picture' or access the 'Album'. This illustrates how the camera can be managed via the app.

5. MAINTENANCE

Proper maintenance ensures the longevity and optimal performance of your 70mai RC09 Rear Camera.

- **Cleaning the Lens:** Regularly clean the camera lens with a soft, lint-free cloth to remove dust, dirt, or smudges that may affect video clarity. Do not use abrasive cleaners.
- **Water Resistance (IP67):** The RC09 is IP67 rated for water and dust resistance. This protects it from splashes and temporary immersion in fresh water. However, avoid exposing the device to salt water, chlorinated water, hot water, or other corrosive liquids. If contact occurs, immediately clean the device with fresh water and dry thoroughly.
- **Cable Inspection:** Periodically check the connection cables for any signs of wear, damage, or loose connections.

6. TROUBLESHOOTING

If you encounter issues with your 70mai RC09 Rear Camera, refer to the following common troubleshooting steps:

- **No Image from Rear Camera:**
 - Ensure the cable is securely connected to both the RC09 and the 70mai A400 Dash Cam.

- Verify that the A400 Dash Cam is powered on and functioning correctly.
- Check the settings on your A400 Dash Cam to ensure the rear camera input is enabled.

- **Poor Image Quality:**

- Clean the camera lens as described in the Maintenance section.
- Ensure the camera is not obstructed by dirt, condensation, or objects on the rear windshield.
- Check for any damage to the camera lens or cable.

- **Intermittent Connection:**

- Inspect the connection cable for any kinks, cuts, or loose connectors.
- Ensure the cable is not being pinched or stressed by vehicle components.

If problems persist after attempting these steps, please contact 70mai customer support for further assistance.

7. SPECIFICATIONS

Parameter	Detail
Brand	70mai
Product	Rear Camera
Model	RC09
Image Sensor	GC2053
Resolution	1080p FHD
Field of View (FOV)	140°
Water Resistance	IP67
Compatible Dash Cam	70mai A400
Video Recording Resolution	1080p
Frame Rate	30 FPS
Components Included	Rear Camera, 2 Cables, User Manual

8. WARRANTY AND SUPPORT

For detailed warranty information, please refer to the warranty card included with your product or the official 70mai website. Warranty terms and conditions may vary by region and retailer.

For technical support, troubleshooting assistance, or any other inquiries, please visit the official 70mai support page or contact their customer service directly. Contact information can typically be found on the 70mai website.



