

PDP LVL40

PDP AIRLITE LVL40 Wired Stereo Headset User Manual

Model: LVL40 (500-162-BW-NA)

1. INTRODUCTION

This manual provides essential information for the setup, operation, and maintenance of your PDP AIRLITE LVL40 Wired Stereo Headset. Designed for comfort and clear audio, this headset is officially licensed for Nintendo Switch, Switch Lite, and Switch OLED, and is also compatible with other devices featuring a 3.5mm audio jack.



Image 1.1: PDP AIRLITE LVL40 Wired Stereo Headset, front view.

2. PACKAGE CONTENTS

Verify that all items are present in your package:

- PDP AIRLITE LVL40 Wired Stereo Headset
- Integrated 3.5mm Audio Cable

3. PRODUCT FEATURES

- **Stereo Sound:** Equipped with powerful 40mm speaker drivers for immersive audio.
- **Lightweight Design:** Constructed with lightweight materials and soft, padded earcups and headband for extended comfort.
- **Noise-Cancelling Microphone:** Flexible microphone designed to reduce background noise for clear communication.
- **Flip-to-Mute Functionality:** The microphone mutes automatically when flipped into the upright position.
- **On-Ear Volume Control:** Conveniently located controls on the earcup for quick audio adjustments.

- **Wired Compatibility:** Connects via a 3.5mm jack to Nintendo Switch, Switch OLED, Switch Lite, smartphones, PCs, and other compatible devices.

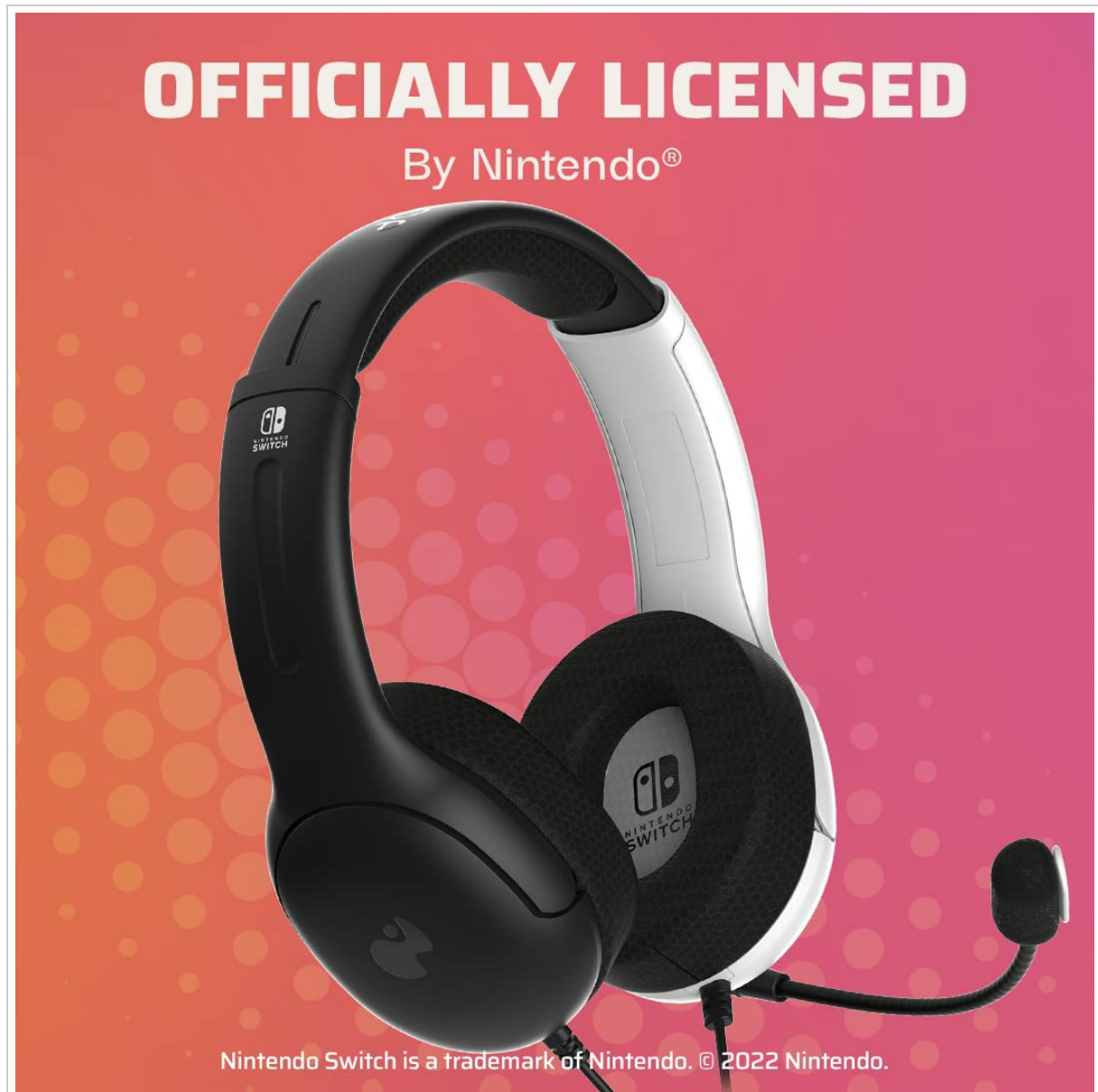


Image 3.1: Headset highlighting 40mm drivers for immersive sound.

ALSO USE FOR ONLINE

Learning & Meetings



Nintendo Switch is a trademark of Nintendo. © 2022 Nintendo.

Image 3.2: Headset design emphasizing all-day comfort.

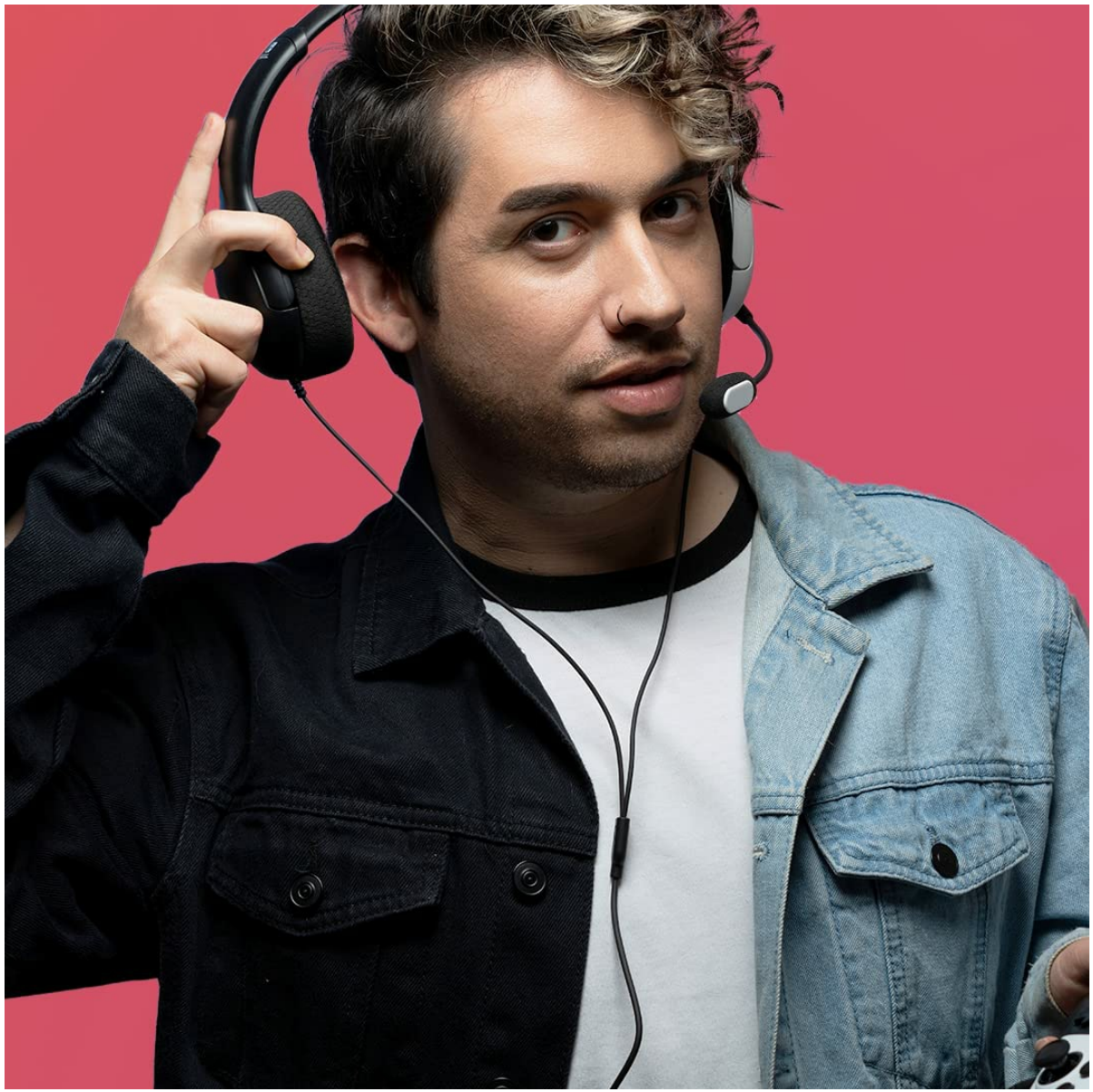


Image 3.3: Close-up of the noise-cancelling, flip-to-mute microphone.

4. SETUP INSTRUCTIONS

Follow these steps to connect your PDP AIRLITE LVL40 Headset to your device:

1. **Connect to Device:** Plug the 3.5mm audio jack from the headset directly into the headphone port of your Nintendo Switch console, Switch Lite, Switch OLED, or other compatible device (e.g., PC, smartphone).
2. **Adjust Headset Fit:** Gently extend or retract the headband to ensure the earcups sit comfortably over your ears. The earcups are designed to provide a snug fit for optimal sound isolation.
3. **Position Microphone:** Lower the flexible microphone boom arm to position the microphone near your mouth for clear voice input.



Image 4.1: Front view of the headset, illustrating the 3.5mm jack connection point.

5. OPERATING INSTRUCTIONS

Learn how to use the key functions of your headset:

5.1. Volume Control

The volume roller is located on the left earcup. Rotate the roller up to increase volume and down to decrease volume. Ensure the volume is not set to minimum if you cannot hear audio.

NOISE-CANCELLING

Flip-To-Mute Mic



Image 5.1: Back view of the headset, indicating the location of the volume control.

5.2. Microphone Usage (Flip-to-Mute)

To activate the microphone, lower the boom arm until it is positioned near your mouth. To mute the microphone, flip the boom arm upwards. The microphone will automatically mute when in the upright position.

6. MAINTENANCE

Proper care ensures the longevity of your headset:

- **Cleaning:** Use a soft, dry cloth to clean the headset. Avoid using harsh chemicals or abrasive materials.
- **Storage:** Store the headset in a cool, dry place away from direct sunlight and extreme temperatures.
- **Cable Care:** Avoid sharp bends or excessive pulling on the audio cable to prevent damage.

7. TROUBLESHOOTING

If you encounter issues with your headset, refer to the following common solutions:

- **No Audio:**

- Ensure the 3.5mm audio jack is fully inserted into the device's port.
- Check the headset's on-ear volume control and ensure it is not set to minimum.
- Verify the audio settings on your connected device (e.g., Nintendo Switch system settings, PC sound settings).
- Test the headset with another device to determine if the issue is with the headset or the original device.

- **Microphone Not Working:**

- Ensure the microphone boom arm is fully lowered into the active position (not flipped up for mute).
- Check the microphone input settings on your connected device.
- Some devices may require an extension cable for the microphone to function correctly when plugged in directly. If experiencing issues, try using a compatible 3.5mm audio extension cable.
- Test the microphone with another device to isolate the problem.

- **Poor Sound Quality:**

- Ensure the audio jack is clean and free of debris.
- Adjust the volume on both the headset and the connected device.
- Test with another audio source to rule out issues with the original audio.

8. SPECIFICATIONS



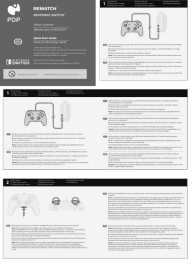


Model Name	LVL40
Item Model Number	500-162-BW-NA
Connectivity Technology	Wired
Headphones Jack	3.5 mm Jack
Audio Driver Size	40 Millimeters
Frequency Range	20 Hz - 20,000 Hz
Microphone	Included, Noise-Cancelling, Flip-to-Mute
Control Type	Volume Control (On-Ear)
Compatible Devices	Nintendo Switch, Switch OLED, Switch Lite, Cellphones, Desktops, Gaming Consoles, Laptops, VR Devices
Material	Rubber (earcups, headband padding)
Item Weight	9.9 ounces (280 Grams)
Product Dimensions	0.31 x 0.87 x 0.75 inches
UPC	708056068721

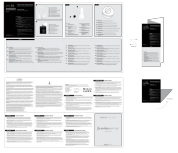
9. WARRANTY AND SUPPORT

PDP products are designed for quality and reliability. For warranty information, technical support, or to contact customer service, please visit the official PDP website or refer to the warranty card included with your product. You can also visit the [PDP Store on Amazon](#) for additional product information.

© 2025 PDP. All rights reserved. Nintendo Switch is a trademark of Nintendo. © 2022 Nintendo.

Related Documents - LVL40

	<p>PDP AIRLITE Wired Headset for Nintendo Switch: Quick Start Guide</p> <p>Get started quickly with the PDP AIRLITE Wired Headset for Nintendo Switch. This guide covers initial setup, connecting the headset, mic mute, audio controls, and warranty information.</p>
	<p>PDP LVL40 Wired Stereo Gaming Headset for PlayStation Quick Start Guide</p> <p>Quick start guide and limited warranty information for the PDP LVL40 Wired Stereo Gaming Headset, compatible with PlayStation 5 and PlayStation 4.</p>
	<p>PDP REMATCH Wired Controller for Nintendo Switch: Quick Start Guide</p> <p>Concise guide to setting up and using the PDP REMATCH Wired Controller for Nintendo Switch, covering initial setup, audio, volume, and back button programming.</p>
	<p>Afterglow Wireless Deluxe Controller for Nintendo Switch - Quick Start Guide & Features PDP</p> <p>Get started with your PDP Afterglow Wireless Deluxe Controller for Nintendo Switch. Learn how to pair, charge, customize lights, program back buttons, and understand the limited warranty.</p>
	<p>REALMz™ Wired Controller Quick Start Guide for Nintendo Switch</p> <p>Quick start guide for the REALMz™ Wired Controller for Nintendo Switch. Learn setup, audio, volume, and LED lighting features.</p>



[PDP LVL50 Wired Stereo Gaming Headset Quick Start Guide](#)

Get started with your PDP LVL50 Wired Stereo Gaming Headset for PlayStation 4 & 5. This guide covers setup, audio controls, microphone mute, and warranty information.